

YEAR 2007

CORE STATION 1026

ROAD NETWORK MAJOR

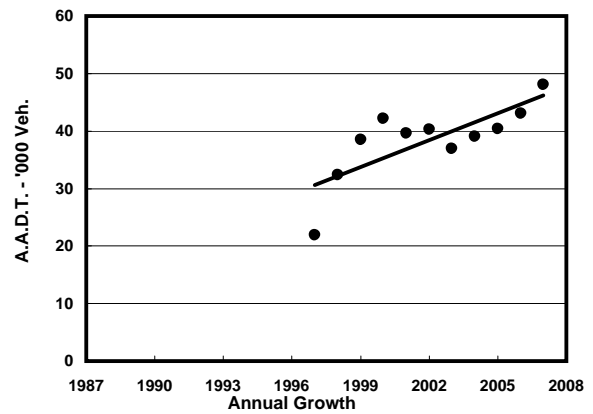
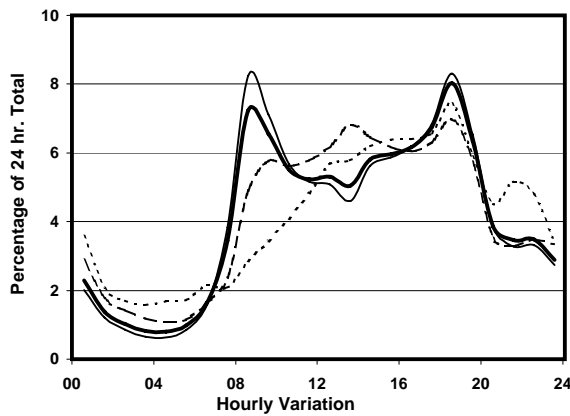
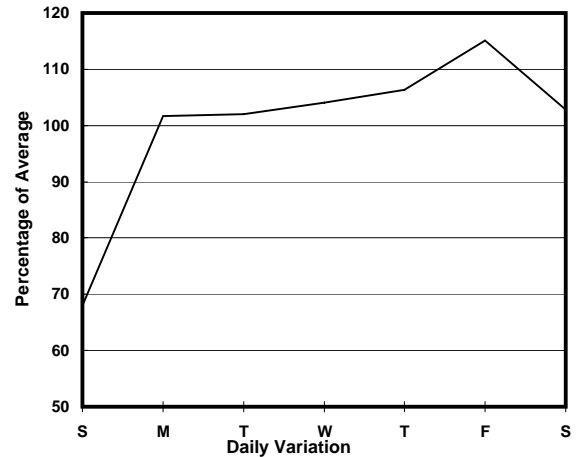
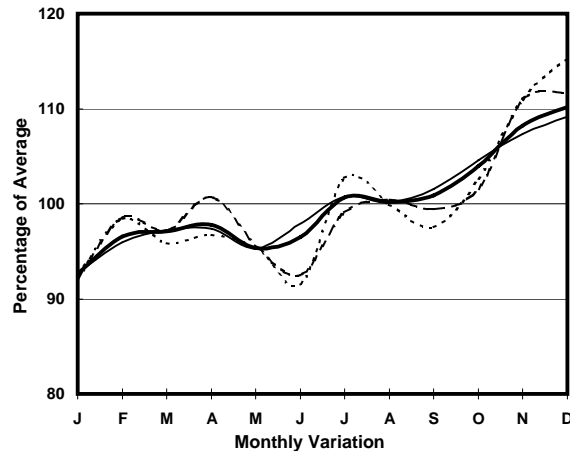
ROAD TYPE URBAN TRUNK ROAD

LINK WESTERN HARBOUR CROSSING (from TOLL PLAZA to SOUTH PORTAL)

10.0m 10.0m

N bound 3 lanes S bound 3 lanes

1. TRAFFIC FLOW VARIATION AND GROWTH



— All day — Mon.- Fri. - - - - Sat. - - - - - Sun.

2. TRAFFIC CHARACTERISTICS (BY DIRECTION)

Parameter	All - Day	Mon. - Fri.	Sat.	Sun.
SOUTH BOUND				
A.A.D.T.	23700	25500	25090	16240
R 12 / 24 - %	71.8	74	68.7	59.3
R 16 / 24 - %	87	88.6	83.7	79.6
AM Peak Hour	0800-0900	0800-0900	0900-1000	0900-1000
One-way flow at AM peak hour	2030	2510	1750	570
T - % (AM)	-	19.9	-	-
PM Peak Hour	1800-1900	1800-1900	1800-1900	1800-1900
One-way flow at PM peak hour	1670	1830	1540	1190
T - % (PM)	-	9.9	-	-
Prop.of commercial vehicles - 16 hr.	-	12.4	-	-
NORTH BOUND				
A.A.D.T.	24440	26340	25270	17070
R 12 / 24 - %	70.3	71.1	70.2	64
R 16 / 24 - %	89.3	90.3	87.2	84.5
AM Peak Hour	0800-0900	0800-0900	0900-1000	0900-1000
One-way flow at AM peak hour	1450	1750	1160	570
T - % (AM)	-	8.9	-	-
PM Peak Hour	1800-1900	1800-1900	1800-1900	1800-1900
One-way flow at PM peak hour	2190	2470	1980	1280
T - % (PM)	-	14.2	-	-
Prop.of commercial vehicles - 16 hr.	-	11.1	-	-

3. OTHER INFORMATION AND COMMENT

4. Vehicle classification and occupancy - Monday to Friday

Time		Class of vehicle									
		Motor	Private	Taxi	Private	PLB	Goods veh.		Non	Fr. Bus	
		Cycle	Car		LB		Light	M & H	Fr. Bus	SD	DD
0700-0800	Pro	2.2	29.9	30.2	0.6	7.2	7.9	3.2	4.7	0.6	13.4
	Ocp	1.0	1.3	2.2	2.5	15.9	1.5	1.4	39.7	26.3	61.7
0800-0900	Pro	0.9	43.8	21.2	0.5	6.8	11.0	1.8	7.2	0.2	6.6
	Ocp	1.3	1.3	2.2	2.2	17.0	2.2	1.9	43.8	23.4	73.3
0900-1000	Pro	0.9	48.4	21.5	0.6	5.2	13.0	2.1	2.6	0.2	5.5
	Ocp	1.3	1.4	1.6	2.5	16.7	1.9	2.2	26.3	18.9	45.8
1000-1100	Pro	1.1	46.8	21.1	1.6	3.8	15.8	1.8	1.8	0.2	6.0
	Ocp	1.3	1.6	2.2	3.3	15.0	1.9	2.1	19.5	11.4	34.1
1100-1200	Pro	0.2	50.2	21.6	1.1	2.8	14.9	1.4	1.4	0.3	6.2
	Ocp	2.0	1.6	2.3	3.3	14.9	1.7	1.8	29.0	12.3	30.4
1200-1300	Pro	0.5	51.8	20.3	0.8	3.2	13.8	2.5	0.8	0.2	6.1
	Ocp	1.0	1.6	2.6	1.6	14.0	1.9	1.7	34.6	9.0	27.9
1300-1400	Pro	0.4	56.9	15.8	0.2	3.9	11.9	1.6	1.2	0.3	7.9
	Ocp	1.0	1.5	2.6	3.0	14.7	1.9	1.6	34.2	14.5	32.4
1400-1500	Pro	0.8	50.5	19.5	1.2	2.8	16.4	1.7	1.1	0.3	5.7
	Ocp	1.0	1.6	2.7	2.9	15.1	1.9	1.5	44.0	11.0	33.4
1500-1600	Pro	0.3	52.3	21.9	0.9	2.7	11.6	2.2	1.6	0.3	6.2
	Ocp	1.0	1.6	2.6	3.5	15.3	1.8	1.8	31.1	13.0	31.1
1600-1700	Pro	0.5	49.2	19.3	0.8	2.7	15.3	2.6	2.3	0.2	7.2
	Ocp	1.3	1.6	2.3	1.6	16.7	2.0	2.0	26.3	16.2	33.2
1700-1800	Pro	1.0	49.7	18.1	1.0	6.4	11.3	2.1	1.8	0.2	8.5
	Ocp	1.2	1.7	2.5	2.3	16.4	1.8	2.1	29.9	18.8	45.9
1800-1900 Peak hour	Pro	1.8	57.5	15.9	0.4	7.5	4.6	0.7	5.0	0.2	6.4
	Ocp	1.2	1.6	2.6	3.3	15.9	1.9	2.0	49.2	32.6	68.9
1900-2000	Pro	0.5	62.0	15.8	0.3	7.9	3.4	0.4	2.9	0.3	6.7
	Ocp	1.0	1.6	2.6	2.5	16.9	1.7	2.7	40.4	23.6	53.9
2000-2100	Pro	0.0	59.7	17.0	0.5	7.9	2.1	0.5	2.6	0.3	9.5
	Ocp	0.0	1.5	2.5	2.5	16.0	2.1	2.0	36.5	16.7	42.3
2100-2200	Pro	0.3	57.1	19.9	0.5	8.3	1.9	0.0	1.6	0.3	10.1
	Ocp	1.0	1.6	2.6	2.0	16.4	1.4	0.0	39.8	13.2	34.9
2200-2300	Pro	0.0	53.2	25.0	0.0	8.0	1.5	0.3	1.8	0.3	9.9
	Ocp	0.0	1.6	2.5	0.0	16.5	1.5	1.0	34.7	9.6	35.3
16 hours	Pro	0.7	51.3	19.9	0.7	5.3	10.4	1.6	2.8	0.3	7.1
	Ocp	1.2	1.5	2.4	2.7	16.1	1.9	1.9	38.3	17.4	45.0

Legend

- Pro.** Proportion of vehicles in % (Sum may not add up to 100% due to figure rounding)
- Ocp.** Average occupancy of vehicles
- M&H** Medium and Heavy