

YEAR

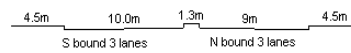
2007

LINK

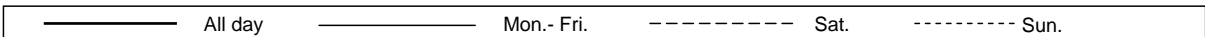
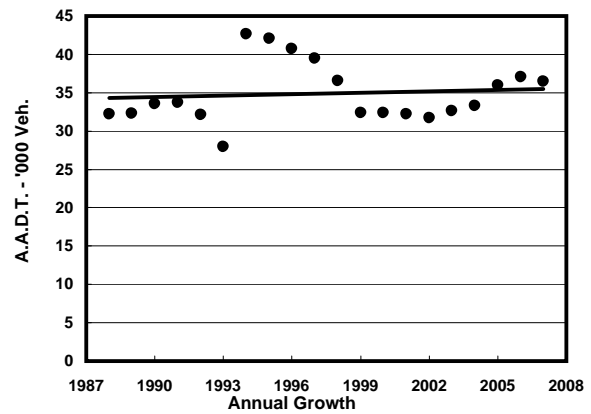
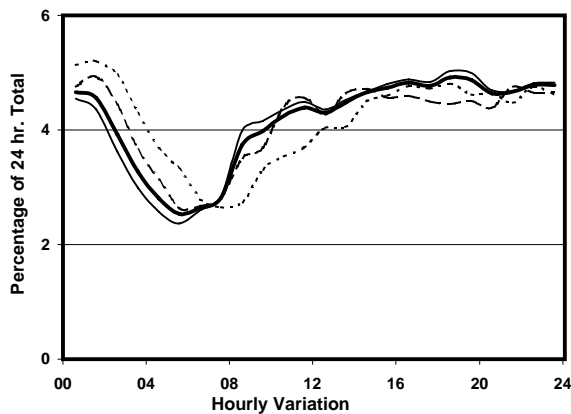
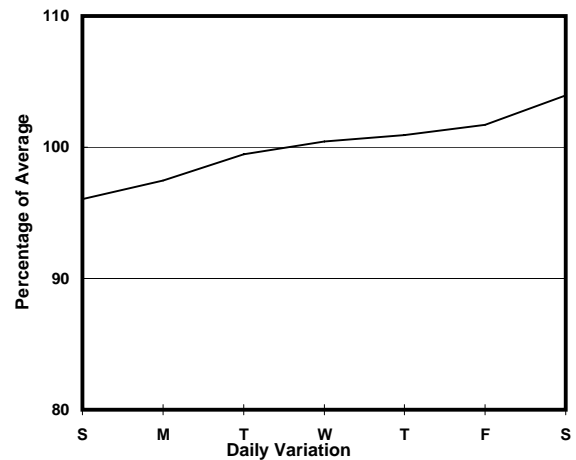
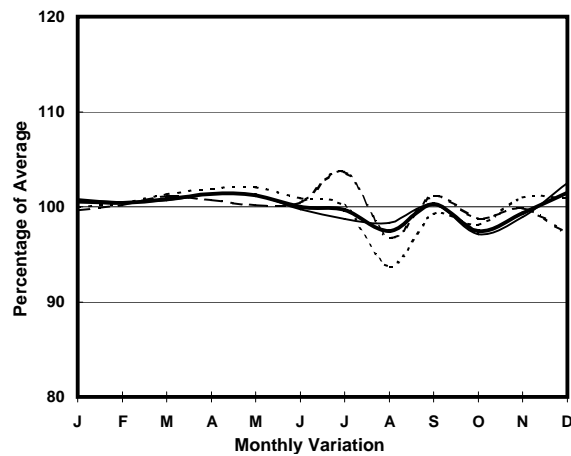
NATHAN RD (from SHANTUNG ST to DUNDAS ST)

CORE STATION  
ROAD NETWORK  
ROAD TYPE

3006  
MAJOR  
PRIMARY DISTRIBUTOR



### 1. TRAFFIC FLOW VARIATION AND GROWTH



### 2. TRAFFIC CHARACTERISTICS (BY DIRECTION)

Parameter	All - Day	Mon. - Fri.	Sat.	Sun.
<b>SOUTH BOUND</b>				
A.A.D.T.	20430	20510	21080	19690
R 12 / 24 - %	54.4	55.5	52.9	49.9
R 16 / 24 - %	73.8	75	72	69.2
AM Peak Hour	0900-1000	0800-0900	0900-1000	0900-1000
One-way flow at AM peak hour	880	950	840	670
T - % (AM)	-	34.6	-	-
PM Peak Hour	1800-1900	1800-1900	1600-1700	1800-1900
One-way flow at PM peak hour	1030	1050	1000	1040
T - % (PM)	-	26.1	-	-
Prop.of commercial vehicles - 16 hr.	-	27.3	-	-
<b>NORTH BOUND</b>				
A.A.D.T.	16050	16030	16920	15500
R 12 / 24 - %	48.7	49.6	48.1	44.4
R 16 / 24 - %	67.1	68.4	65.5	61.9
AM Peak Hour	0900-1000	0900-1000	0900-1000	0900-1000
One-way flow at AM peak hour	570	590	560	490
T - % (AM)	-	51.6	-	-
PM Peak Hour	1800-1900	1800-1900	1600-1700	1600-1700
One-way flow at PM peak hour	760	790	750	690
T - % (PM)	-	35.1	-	-
Prop.of commercial vehicles - 16 hr.	-	36.3	-	-

### 3. OTHER INFORMATION AND COMMENT

**4. Vehicle classification and occupancy - Monday to Friday**

Time		Class of vehicle									
		Motor	Private	Taxi	Private	PLB	Goods veh.		Non	Fr. Bus	
		Cycle	Car		LB		Light	M & H	Fr. Bus	SD	DD
0700-0800	Pro	1.3	4.9	30.2	0.9	3.1	9.8	1.8	0.9	1.0	46.2
	Ocp	1.3	1.9	1.9	3.5	2.6	1.4	1.8	4.0	7.4	19.9
0800-0900	Pro	1.1	18.7	24.4	0.5	0.3	14.8	0.5	1.9	0.8	36.9
	Ocp	1.0	1.8	1.9	4.5	3.0	1.8	1.5	8.0	10.2	27.5
0900-1000	Pro	2.4	14.3	26.3	0.3	0.0	17.2	0.5	1.3	0.8	36.9
	Ocp	1.1	1.5	2.1	1.0	0.0	1.7	1.0	5.4	4.1	15.7
1000-1100	Pro	1.8	9.2	28.7	0.3	0.6	23.4	1.2	1.2	0.7	33.0
	Ocp	1.0	1.5	1.8	1.0	1.0	1.6	2.0	6.3	6.7	14.7
1100-1200	Pro	0.8	11.5	30.7	1.1	0.5	25.0	1.6	0.0	0.4	28.3
	Ocp	1.3	2.0	1.9	2.8	8.0	1.6	1.8	0.0	7.8	16.9
1200-1300	Pro	1.3	13.0	35.1	0.8	0.8	19.3	0.5	0.3	0.7	28.3
	Ocp	1.0	2.0	1.8	6.3	1.0	1.6	1.5	1.0	9.2	16.4
1300-1400	Pro	1.6	13.7	32.8	1.1	1.4	18.0	1.1	0.0	0.6	29.7
	Ocp	1.0	1.6	1.8	1.8	3.8	1.5	1.8	0.0	8.4	19.6
1400-1500	Pro	1.7	13.1	34.2	1.2	1.7	20.4	0.2	0.5	0.5	26.5
	Ocp	1.0	1.6	2.1	3.0	2.0	1.8	1.0	2.0	9.2	20.3
1500-1600	Pro	2.9	18.3	30.8	0.7	2.0	19.7	0.9	0.5	0.5	23.7
	Ocp	1.1	1.5	1.9	3.3	4.2	1.8	1.8	1.0	9.2	22.4
1600-1700	Pro	3.3	14.8	34.3	0.7	2.4	13.4	0.5	1.4	0.5	28.7
	Ocp	1.1	1.8	2.0	1.3	7.5	1.7	1.0	7.2	7.9	21.9
1700-1800	Pro	3.7	15.0	35.3	0.7	3.2	8.6	0.2	0.5	0.6	32.3
	Ocp	1.1	1.4	2.0	1.3	7.2	1.6	2.0	12.5	8.6	24.8
1800-1900 Peak hour	Pro	3.8	15.0	38.4	0.0	4.2	8.3	0.2	0.4	0.5	29.1
	Ocp	1.0	1.6	1.8	0.0	8.9	1.5	2.0	10.5	7.6	35.1
1900-2000	Pro	2.5	16.9	40.8	0.9	6.1	7.7	0.0	0.2	0.3	24.7
	Ocp	1.3	1.4	1.9	3.0	7.8	1.6	0.0	1.0	4.5	30.5
2000-2100	Pro	2.7	17.3	46.5	0.0	3.8	4.7	0.0	0.0	0.4	24.6
	Ocp	1.4	1.6	1.8	0.0	11.2	1.6	0.0	0.0	9.5	26.0
2100-2200	Pro	0.7	11.6	54.1	0.2	2.5	4.3	0.0	0.0	0.6	26.0
	Ocp	1.3	1.8	1.7	2.0	7.5	2.1	0.0	0.0	5.3	23.8
2200-2300	Pro	1.8	15.6	48.2	0.3	4.1	0.5	0.0	0.8	0.4	28.4
	Ocp	1.1	1.7	2.0	4.0	9.9	3.5	0.0	1.0	2.3	27.3
16 hours	Pro	2.2	14.3	36.2	0.6	2.4	13.2	0.5	0.6	0.6	29.5
	Ocp	1.1	1.7	1.9	2.9	7.4	1.7	1.7	5.8	7.4	22.8

**Legend**

- Pro.** Proportion of vehicles in % (Sum may not add up to 100% due to figure rounding)
- Ocp.** Average occupancy of vehicles
- M&H** Medium and Heavy