

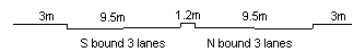
YEAR 2007

CORE STATION 3014

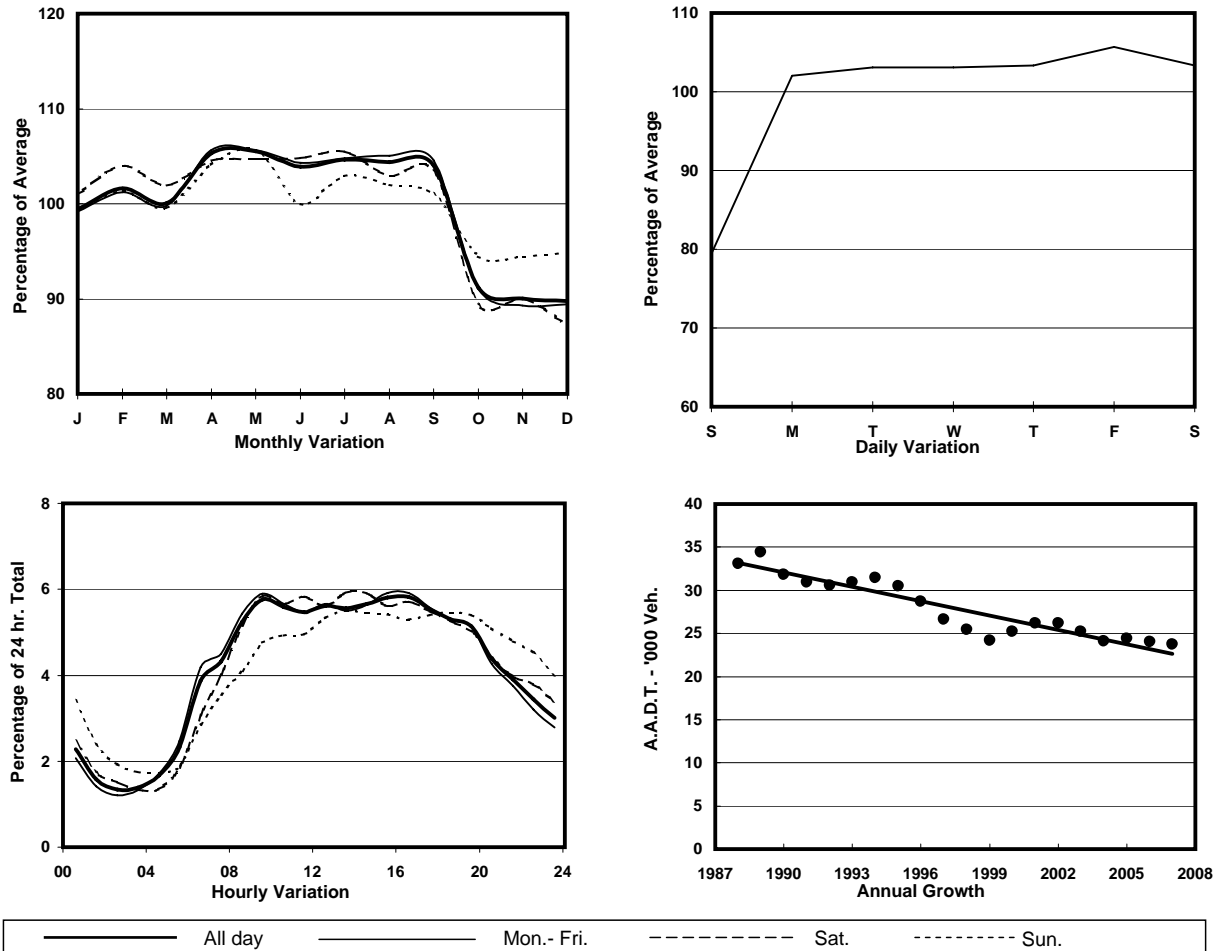
ROAD NETWORK MAJOR

ROAD TYPE DISTRICT DISTRIBUTOR

LINK MA TAU WAI RD & TO KWA WAN RD (from SAN LAU ST & BAILEY ST to CHI KIANG ST)



1. TRAFFIC FLOW VARIATION AND GROWTH



2. TRAFFIC CHARACTERISTICS (BY DIRECTION)

| Parameter | All - Day | Mon. - Fri. | Sat. | Sun. |
|--------------------------------------|-----------|-------------|-----------|-----------|
| SOUTH BOUND | | | | |
| A.A.D.T. | 17170 | 18040 | 17940 | 13390 |
| R 12 / 24 - % | 66.5 | 67.3 | 67 | 60.5 |
| R 16 / 24 - % | 82.1 | 82.2 | 83.3 | 79.9 |
| AM Peak Hour | 0900-1000 | 0900-1000 | 0900-1000 | 0900-1000 |
| One-way flow at AM peak hour | 1040 | 1110 | 1120 | 660 |
| T - % (AM) | - | 13.3 | - | - |
| PM Peak Hour | 1600-1700 | 1600-1700 | 1600-1700 | 1800-1900 |
| One-way flow at PM peak hour | 990 | 1050 | 1020 | 730 |
| T - % (PM) | - | 22.3 | - | - |
| Prop.of commercial vehicles - 16 hr. | - | 18.3 | - | - |
| NORTH BOUND | | | | |
| A.A.D.T. | 6580 | 6800 | 6820 | 5730 |
| R 12 / 24 - % | 63.7 | 64.4 | 63.6 | 59.5 |
| R 16 / 24 - % | 83.9 | 84.6 | 83.4 | 80.5 |
| AM Peak Hour | 0900-1000 | 0900-1000 | 0900-1000 | 0900-1000 |
| One-way flow at AM peak hour | 330 | 360 | 330 | 250 |
| T - % (AM) | - | 33.4 | - | - |
| PM Peak Hour | 1600-1700 | 1600-1700 | 1600-1700 | 1600-1700 |
| One-way flow at PM peak hour | 400 | 420 | 400 | 320 |
| T - % (PM) | - | 23.7 | - | - |
| Prop.of commercial vehicles - 16 hr. | - | 26.9 | - | - |

3. OTHER INFORMATION AND COMMENT

4. Vehicle classification and occupancy - Monday to Friday

| Time | | Class of vehicle | | | | | | | | | |
|------------------------|-----|------------------|---------|------|---------|------|------------|-------|---------|---------|------|
| | | Motor | Private | Taxi | Private | PLB | Goods veh. | | Non | Fr. Bus | |
| | | Cycle | Car | | LB | | Light | M & H | Fr. Bus | SD | DD |
| 0700-0800 | Pro | 1.0 | 2.6 | 20.7 | 3.1 | 18.6 | 19.1 | 2.1 | 5.7 | 0.0 | 27.1 |
| | Ocp | 1.5 | 1.4 | 2.4 | 8.7 | 6.3 | 1.5 | 1.5 | 3.8 | 0.0 | 21.8 |
| 0800-0900 | Pro | 3.7 | 14.0 | 27.1 | 2.2 | 10.0 | 19.9 | 2.2 | 3.1 | 0.0 | 17.8 |
| | Ocp | 1.2 | 1.4 | 2.6 | 6.9 | 9.3 | 1.8 | 1.6 | 8.5 | 0.0 | 30.7 |
| 0900-1000 | Pro | 2.3 | 24.4 | 29.8 | 0.0 | 8.9 | 17.6 | 1.8 | 2.3 | 0.0 | 12.9 |
| | Ocp | 1.1 | 1.4 | 1.9 | 0.0 | 7.7 | 1.5 | 1.7 | 14.6 | 0.0 | 22.5 |
| 1000-1100 | Pro | 1.6 | 20.0 | 17.5 | 1.9 | 13.2 | 23.8 | 3.8 | 4.9 | 0.0 | 13.4 |
| | Ocp | 1.0 | 1.4 | 1.9 | 3.1 | 5.1 | 1.6 | 1.6 | 4.4 | 0.0 | 13.5 |
| 1100-1200 | Pro | 2.1 | 14.8 | 22.0 | 0.9 | 11.8 | 30.1 | 2.7 | 3.6 | 0.0 | 12.0 |
| | Ocp | 1.0 | 1.5 | 1.8 | 2.0 | 8.1 | 1.6 | 1.6 | 14.3 | 0.0 | 17.9 |
| 1200-1300 | Pro | 2.0 | 15.9 | 23.1 | 2.9 | 9.3 | 27.5 | 2.6 | 5.5 | 0.0 | 11.2 |
| | Ocp | 1.0 | 1.4 | 2.1 | 5.1 | 6.0 | 1.5 | 1.6 | 10.3 | 0.0 | 14.4 |
| 1300-1400 | Pro | 2.8 | 15.7 | 22.8 | 0.6 | 12.2 | 21.6 | 4.1 | 6.9 | 0.0 | 13.3 |
| | Ocp | 1.0 | 1.5 | 1.9 | 2.5 | 6.8 | 1.5 | 1.7 | 12.3 | 0.0 | 13.3 |
| 1400-1500 | Pro | 2.3 | 13.5 | 20.7 | 1.0 | 12.1 | 28.5 | 3.6 | 3.9 | 0.0 | 14.4 |
| | Ocp | 1.1 | 1.7 | 1.9 | 2.7 | 6.3 | 1.5 | 1.2 | 12.3 | 0.0 | 14.8 |
| 1500-1600 | Pro | 2.2 | 15.4 | 28.1 | 1.9 | 10.2 | 24.2 | 2.8 | 3.6 | 0.0 | 11.6 |
| | Ocp | 1.1 | 1.4 | 1.6 | 2.0 | 6.6 | 1.6 | 1.7 | 17.0 | 0.0 | 15.2 |
| 1600-1700 Peak hour | Pro | 5.1 | 15.4 | 21.8 | 1.6 | 10.8 | 22.6 | 4.6 | 5.4 | 0.0 | 12.7 |
| | Ocp | 1.1 | 1.6 | 1.7 | 2.5 | 7.4 | 1.6 | 1.4 | 11.8 | 0.0 | 17.3 |
| 1700-1800 | Pro | 2.4 | 22.5 | 19.7 | 1.8 | 9.1 | 23.4 | 3.0 | 2.4 | 0.0 | 15.6 |
| | Ocp | 1.0 | 1.6 | 1.8 | 2.5 | 8.6 | 1.5 | 1.4 | 14.9 | 0.0 | 18.1 |
| 1800-1900 | Pro | 3.7 | 24.0 | 20.0 | 1.8 | 9.5 | 20.0 | 2.5 | 3.1 | 0.0 | 15.3 |
| | Ocp | 1.2 | 1.6 | 1.8 | 3.0 | 8.0 | 1.4 | 1.3 | 11.5 | 0.0 | 22.1 |
| 1900-2000 | Pro | 3.6 | 26.9 | 27.5 | 0.0 | 16.3 | 9.5 | 1.5 | 0.9 | 0.0 | 13.8 |
| | Ocp | 1.1 | 1.6 | 1.7 | 0.0 | 7.7 | 1.5 | 1.6 | 17.3 | 0.0 | 18.0 |
| 2000-2100 | Pro | 2.1 | 17.4 | 43.1 | 0.0 | 18.2 | 3.2 | 2.1 | 0.0 | 0.0 | 13.9 |
| | Ocp | 1.0 | 1.6 | 1.5 | 0.0 | 6.9 | 1.3 | 1.5 | 0.0 | 0.0 | 14.0 |
| 2100-2200 | Pro | 3.0 | 16.7 | 36.9 | 1.3 | 18.0 | 4.7 | 0.9 | 0.4 | 0.0 | 18.1 |
| | Ocp | 1.1 | 1.9 | 1.5 | 2.0 | 7.6 | 1.8 | 1.5 | 1.0 | 0.0 | 9.9 |
| 2200-2300 | Pro | 0.9 | 21.4 | 33.6 | 0.9 | 20.0 | 2.6 | 0.9 | 0.4 | 0.0 | 19.4 |
| | Ocp | 1.5 | 1.8 | 1.5 | 2.0 | 6.5 | 1.3 | 1.0 | 1.0 | 0.0 | 9.8 |
| 16 hours | Pro | 2.6 | 18.0 | 25.5 | 1.3 | 12.5 | 19.4 | 2.7 | 3.3 | 0.0 | 14.6 |
| | Ocp | 1.1 | 1.5 | 1.8 | 3.9 | 7.1 | 1.5 | 1.5 | 11.0 | 0.0 | 17.5 |

Legend

- Pro.** Proportion of vehicles in % (Sum may not add up to 100% due to figure rounding)
- Ocp.** Average occupancy of vehicles
- M&H** Medium and Heavy