

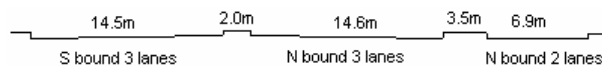
YEAR 2007

CORE STATION 3024

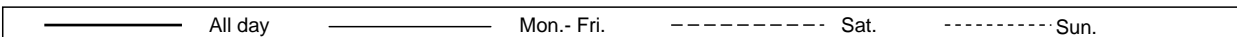
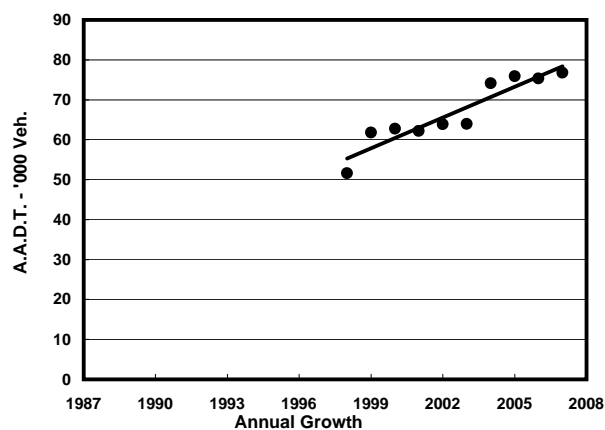
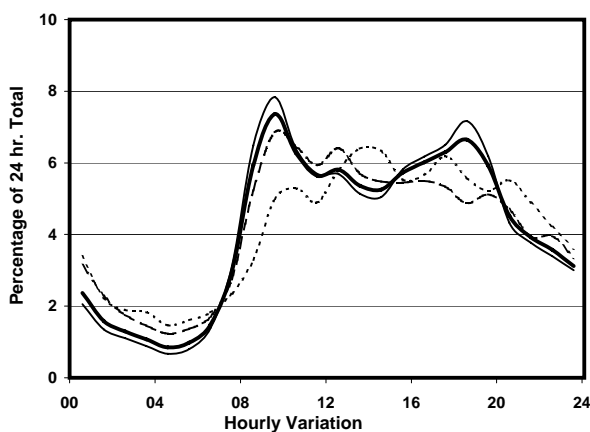
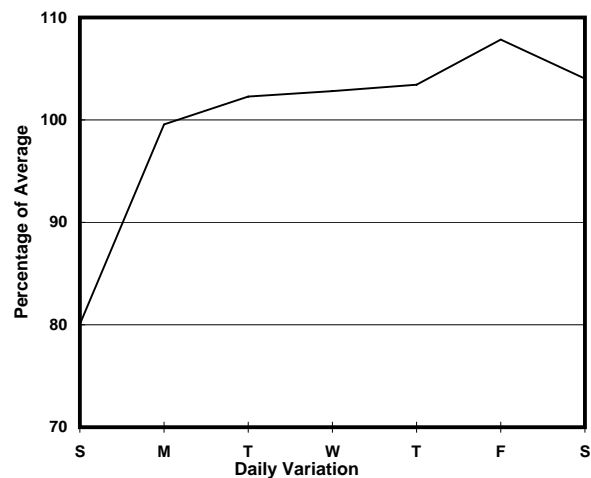
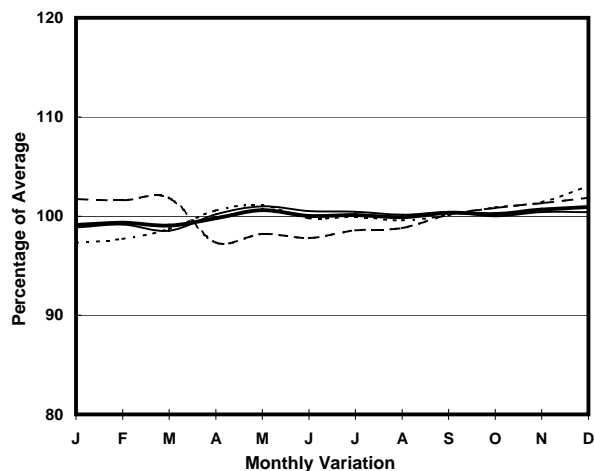
ROAD NETWORK MAJOR

ROAD TYPE URBAN TRUNK ROAD

LINK WEST KOWLOON HIGHWAY (from SLIP RDS TO & FROM LIN CHEUNG RD to HING WAH ST W)



## 1. TRAFFIC FLOW VARIATION AND GROWTH



## 2. TRAFFIC CHARACTERISTICS (BY DIRECTION)

Parameter	All - Day	Mon. - Fri.	Sat.	Sun.
<b>SOUTH BOUND</b>				
A.A.D.T.	47540	50040	49060	37120
R 12 / 24 - %	71.9	73.6	68.7	64.8
R 16 / 24 - %	88.4	89.7	84.9	84.1
AM Peak Hour	0900-1000	0900-1000	0900-1000	0900-1000
One-way flow at AM peak hour	4070	4600	3780	2000
T - % (AM)	-	19.5	-	-
PM Peak Hour	1800-1900	1800-1900	1600-1700	1700-1800
One-way flow at PM peak hour	3090	3510	2840	2410
T - % (PM)	-	9.2	-	-
Prop.of commercial vehicles - 16 hr.	-	17	-	-
<b>NORTH BOUND</b>				
A.A.D.T.	29240	30040	31680	25040
R 12 / 24 - %	65.1	66.8	61.8	58.7
R 16 / 24 - %	85.4	87.2	81.8	79.3
AM Peak Hour	0800-0900	0800-0900	0900-1000	0900-1000
One-way flow at AM peak hour	1710	1920	1760	1110
T - % (AM)	-	15.3	-	-
PM Peak Hour	1800-1900	1800-1900	1700-1800	1800-1900
One-way flow at PM peak hour	2010	2230	1850	1520
T - % (PM)	-	17.7	-	-
Prop.of commercial vehicles - 16 hr.	-	13.4	-	-

## 3. OTHER INFORMATION AND COMMENT

**4. Vehicle classification and occupancy - Monday to Friday**

Time		Class of vehicle									
		Motor	Private	Taxi	Private	PLB	Goods veh.		Non	Fr. Bus	
		Cycle	Car		LB		Light	M & H	Fr. Bus	SD	DD
0700-0800	Pro	2.8	30.8	27.6	0.9	0.0	12.5	9.5	9.4	0.2	6.2
	Ocp	1.1	1.5	1.9	2.0	0.0	1.4	1.1	15.0	19.5	49.7
0800-0900	Pro	2.0	49.4	14.5	0.5	0.0	11.0	6.0	11.2	0.1	5.3
	Ocp	1.1	1.2	1.9	4.1	0.0	1.5	1.3	37.5	13.8	65.0
0900-1000 Peak hour	Pro	1.8	47.0	13.7	0.8	0.0	20.3	7.2	4.7	0.1	4.5
	Ocp	1.2	1.2	1.9	3.0	0.0	1.6	1.3	20.6	6.2	33.4
1000-1100	Pro	1.2	42.9	16.8	0.8	0.0	24.2	6.2	3.6	0.1	4.1
	Ocp	1.2	1.4	1.9	1.8	0.0	1.5	1.3	13.5	8.5	29.7
1100-1200	Pro	1.7	44.3	17.4	1.4	0.0	22.7	6.1	2.5	0.1	3.8
	Ocp	1.0	1.7	1.7	1.8	0.0	1.5	1.3	19.7	7.8	24.6
1200-1300	Pro	0.8	45.5	18.4	1.2	0.0	18.6	6.3	4.7	0.1	4.3
	Ocp	1.0	1.6	1.8	2.3	0.0	1.5	1.5	20.6	12.0	25.0
1300-1400	Pro	0.9	46.1	13.7	1.4	0.0	18.5	8.6	6.4	0.1	4.3
	Ocp	1.0	1.4	1.4	3.5	0.0	1.4	1.2	11.8	9.8	23.0
1400-1500	Pro	1.3	44.2	15.9	1.2	0.0	23.0	7.9	3.0	0.1	3.4
	Ocp	1.2	1.6	2.2	1.4	0.0	1.6	1.8	12.1	8.5	18.2
1500-1600	Pro	1.2	43.5	15.3	0.6	0.0	23.6	6.4	5.3	0.1	3.9
	Ocp	1.3	1.5	2.2	1.7	0.0	1.5	1.5	12.1	4.4	14.6
1600-1700	Pro	0.8	46.2	13.3	1.3	0.0	24.0	4.6	5.5	0.1	4.1
	Ocp	1.0	1.6	1.8	1.3	0.0	1.5	1.1	12.4	9.5	25.5
1700-1800	Pro	1.8	50.6	15.7	0.3	0.0	18.6	3.4	4.9	0.1	4.6
	Ocp	1.0	1.5	2.0	3.0	0.0	1.7	1.3	20.5	9.0	44.2
1800-1900	Pro	1.7	60.8	11.8	0.4	0.0	12.2	1.8	7.3	0.1	4.1
	Ocp	1.1	1.4	2.3	2.0	0.0	1.7	1.3	28.3	16.3	59.6
1900-2000	Pro	1.7	64.2	13.2	0.1	0.0	7.7	2.6	5.9	0.1	4.6
	Ocp	1.1	1.7	2.1	1.0	0.0	1.4	1.2	23.2	15.0	49.5
2000-2100	Pro	1.1	61.8	18.4	0.3	0.0	7.1	1.6	4.5	0.1	5.2
	Ocp	1.1	1.5	2.1	3.0	0.0	1.9	1.4	30.0	5.7	39.4
2100-2200	Pro	1.1	58.3	21.0	0.5	0.0	5.1	2.1	5.5	0.1	6.3
	Ocp	1.1	1.6	2.1	1.7	0.0	1.6	1.4	20.7	7.7	34.3
2200-2300	Pro	1.4	54.0	28.2	0.1	0.0	3.7	2.3	5.3	0.1	4.9
	Ocp	1.1	1.5	2.0	1.0	0.0	1.4	1.1	17.4	2.0	40.5
16 hours	Pro	1.5	49.6	16.4	0.7	0.0	16.2	5.2	5.7	0.1	4.5
	Ocp	1.1	1.5	2.0	2.2	0.0	1.5	1.3	22.3	10.2	38.4

**Legend**

- Pro.** Proportion of vehicles in % (Sum may not add up to 100% due to figure rounding)
- Ocp.** Average occupancy of vehicles
- M&H** Medium and Heavy