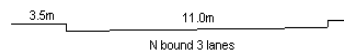


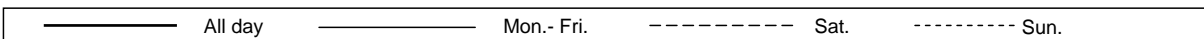
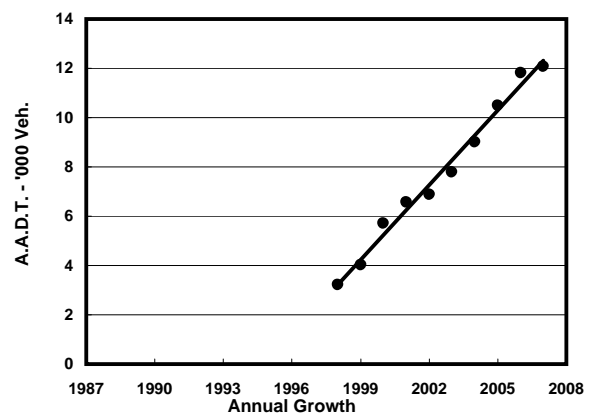
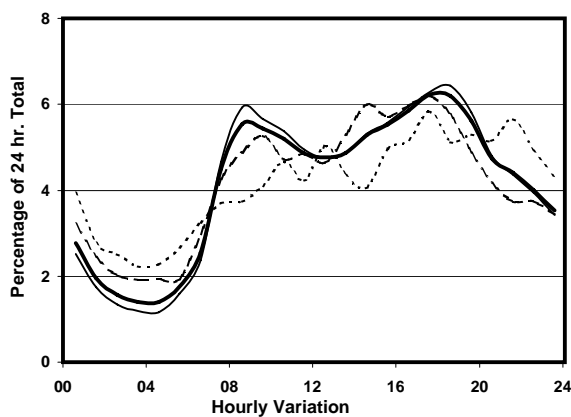
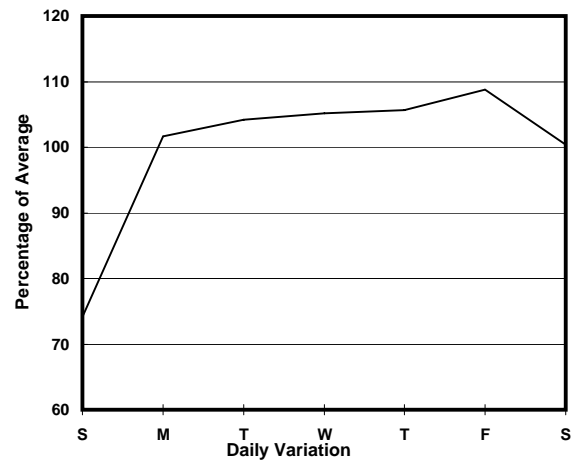
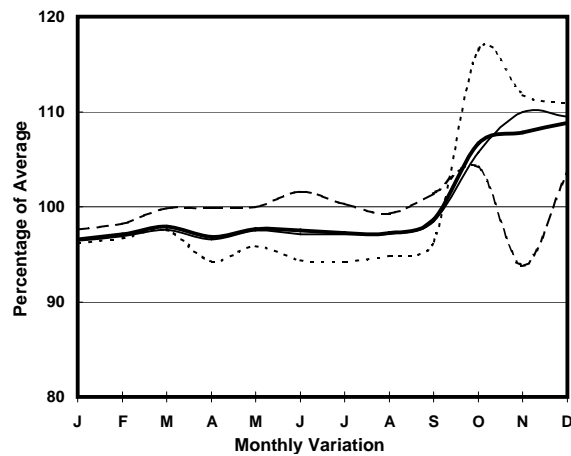
YEAR

2007

LINK LIN CHEUNG RD (from YAU MA TEI INT to CHERRY ST UNDERPASS)

CORE STATION  
ROAD NETWORK  
ROAD TYPE3025  
MAJOR  
URBAN TRUNK ROAD

## 1. TRAFFIC FLOW VARIATION AND GROWTH



## 2. TRAFFIC CHARACTERISTICS (BY DIRECTION)

Parameter	All - Day	Mon. - Fri.	Sat.	Sun.
<b>NORTH BOUND</b>				
A.A.D.T.	12090	12890	12320	9080
R 12 / 24 - %	64.3	65.8	63.6	55
R 16 / 24 - %	83.1	84.7	80.1	76
AM Peak Hour	0800-0900	0800-0900	0900-1000	0900-1000
One-way flow at AM peak hour	670	760	650	370
T - % (AM)	-	21.3	-	-
PM Peak Hour	1700-1800	1800-1900	1700-1800	1700-1800
One-way flow at PM peak hour	750	830	760	530
T - % (PM)	-	13.9	-	-
Prop.of commercial vehicles - 16 hr.	-	25	-	-

A.A.D.T.	-	-	-	-
R 12 / 24 - %	-	-	-	-
R 16 / 24 - %	-	-	-	-
AM Peak Hour	-	-	-	-
One-way flow at AM peak hour	-	-	-	-
T - % (AM)	-	-	-	-
PM Peak Hour	-	-	-	-
One-way flow at PM peak hour	-	-	-	-
T - % (PM)	-	-	-	-
Prop.of commercial vehicles - 16 hr.	-	-	-	-

## 3. OTHER INFORMATION AND COMMENT

**4. Vehicle classification and occupancy - Monday to Friday**

Time		Class of vehicle									
		Motor	Private	Taxi	Private	PLB	Goods veh.		Non	Fr. Bus	
		Cycle	Car		LB		Light	M & H	Fr. Bus	SD	DD
0700-0800	Pro	7.8	12.5	25.0	0.0	0.8	17.2	8.6	25.0	0.0	3.1
	Ocp	1.1	1.5	2.1	0.0	5.0	1.4	1.1	6.7	0.0	38.6
0800-0900	Pro	4.2	35.7	19.9	2.1	0.0	16.8	7.9	10.5	0.0	2.9
	Ocp	1.0	1.2	1.9	1.8	0.0	1.4	1.3	3.4	0.0	45.7
0900-1000	Pro	0.0	27.4	20.2	2.3	0.0	20.2	15.3	10.8	0.0	3.7
	Ocp	0.0	1.3	1.6	2.0	0.0	1.3	1.1	1.4	0.0	18.5
1000-1100	Pro	1.1	22.4	14.2	0.0	0.5	23.5	28.4	6.5	0.0	3.4
	Ocp	1.0	1.5	1.8	0.0	1.0	1.5	1.1	5.2	0.0	9.3
1100-1200	Pro	0.0	23.2	19.5	1.3	1.9	23.9	14.4	11.3	0.5	4.1
	Ocp	0.0	1.3	2.0	1.0	1.0	1.6	1.4	11.7	1.0	12.2
1200-1300	Pro	3.3	24.9	17.9	1.6	0.5	30.4	14.6	4.3	0.0	2.4
	Ocp	1.0	1.4	2.3	3.3	1.0	1.8	1.6	7.4	0.0	23.0
1300-1400	Pro	0.7	28.4	14.5	2.0	0.0	24.5	21.8	6.6	0.0	1.5
	Ocp	1.0	1.4	1.9	1.0	0.0	1.4	1.1	4.9	0.0	45.6
1400-1500	Pro	1.2	32.8	19.9	1.8	0.0	18.8	17.6	6.5	0.0	1.5
	Ocp	1.0	1.4	2.0	1.7	0.0	1.7	1.4	13.0	0.0	46.4
1500-1600	Pro	1.7	29.8	21.5	1.1	0.0	19.3	18.2	6.6	0.0	1.7
	Ocp	1.0	1.5	2.5	4.0	0.0	1.7	1.2	5.1	0.0	43.8
1600-1700	Pro	2.0	25.9	27.4	2.5	0.0	19.4	11.9	9.0	0.0	2.0
	Ocp	1.0	1.6	1.6	4.0	0.0	1.8	1.2	10.0	0.0	42.3
1700-1800	Pro	2.8	25.9	26.5	0.6	0.0	21.4	12.4	7.9	0.0	2.5
	Ocp	1.0	1.5	1.8	3.0	0.0	1.4	1.5	9.2	0.0	60.8
1800-1900 Peak hour	Pro	3.5	39.3	21.2	2.0	0.0	20.2	7.6	4.0	0.0	2.3
	Ocp	1.0	1.3	2.2	5.3	0.0	1.6	1.3	8.0	0.0	93.4
1900-2000	Pro	2.7	43.5	20.2	0.5	0.0	14.3	6.9	9.0	0.3	2.7
	Ocp	1.2	1.3	2.0	1.0	0.0	1.4	1.2	11.1	1.0	43.0
2000-2100	Pro	0.0	36.4	22.4	0.0	0.6	11.5	9.1	16.4	0.2	3.5
	Ocp	0.0	1.3	1.9	0.0	1.0	1.2	1.1	11.4	1.0	26.2
2100-2200	Pro	2.0	41.1	22.3	0.7	0.7	9.4	3.4	18.9	0.0	1.5
	Ocp	1.0	1.4	2.2	1.0	1.0	1.4	1.2	19.4	0.0	44.9
2200-2300	Pro	2.1	36.9	36.2	0.0	0.7	13.2	4.2	4.2	0.0	2.6
	Ocp	1.3	1.8	2.4	0.0	1.0	1.6	1.7	18.0	0.0	22.7
16 hours	Pro	2.1	30.6	21.6	1.2	0.3	19.2	12.8	9.5	0.1	2.6
	Ocp	1.1	1.4	2.0	2.7	1.4	1.5	1.3	9.1	1.0	35.4

**Legend**

**Pro.** Proportion of vehicles in % (Sum may not add up to 100% due to figure rounding)  
**Ocp.** Average occupancy of vehicles  
**M&H** Medium and Heavy