

YEAR

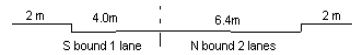
2007

LINK

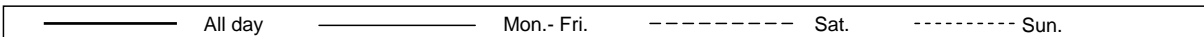
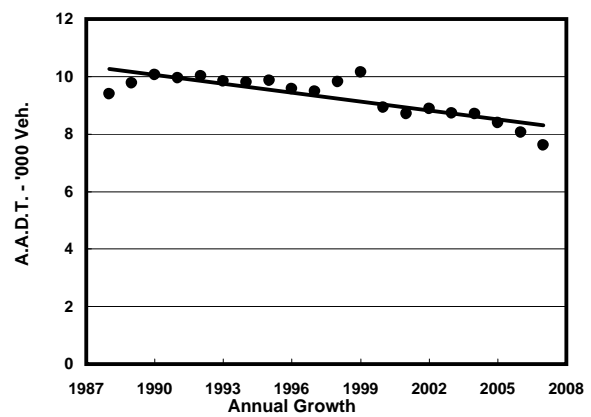
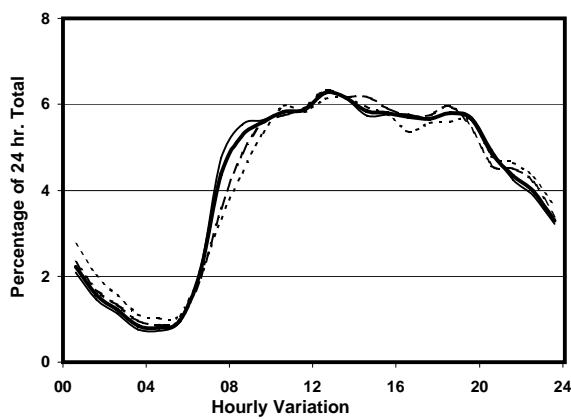
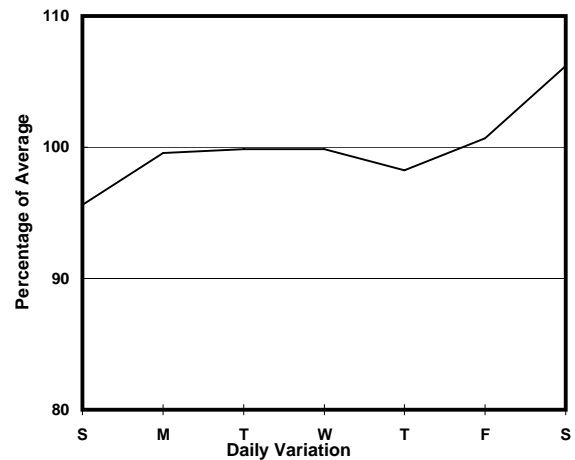
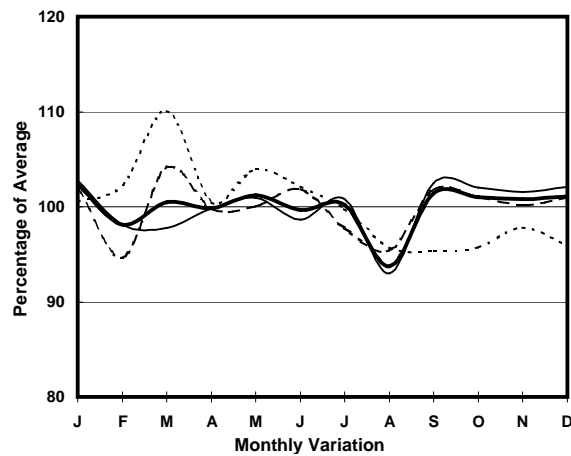
KO SHAN RD (from PAK KUNG ST to CHI KIANG ST)

CORE STATION
ROAD NETWORK
ROAD TYPE

3103
MINOR
LOCAL DISTRIBUTOR



1. TRAFFIC FLOW VARIATION AND GROWTH



2. TRAFFIC CHARACTERISTICS (BY DIRECTION)

Parameter	All - Day	Mon. - Fri.	Sat.	Sun.
SOUTH BOUND				
A.A.D.T.	3620	3640	3880	3360
R 12 / 24 - %	67.2	67.9	66.8	64.3
R 16 / 24 - %	86.4	87.1	86	83.7
AM Peak Hour	0800-0900	0800-0900	0900-1000	0900-1000
One-way flow at AM peak hour	200	210	200	170
T - % (AM)	-	-	-	-
PM Peak Hour	1800-1900	1800-1900	1800-1900	1700-1800
One-way flow at PM peak hour	220	230	250	200
T - % (PM)	-	1.7	-	-
Prop.of commercial vehicles - 16 hr.	-	2.9	-	-

NORTH BOUND				
A.A.D.T.	4000	3960	4260	3930
R 12 / 24 - %	69	69.7	68.6	66.4
R 16 / 24 - %	87.5	87.9	86.9	85.8
AM Peak Hour	0900-1000	0900-1000	0900-1000	0900-1000
One-way flow at AM peak hour	250	250	260	220
T - % (AM)	-	2.5	-	-
PM Peak Hour	1600-1700	1600-1700	1600-1700	1800-1900
One-way flow at PM peak hour	230	230	240	220
T - % (PM)	-	5.1	-	-
Prop.of commercial vehicles - 16 hr.	-	3.3	-	-

3. OTHER INFORMATION AND COMMENT

4. Vehicle classification and occupancy - Monday to Friday

Time		Class of vehicle									
		Motor	Private	Taxi	Private	PLB	Goods veh.		Non	Fr. Bus	
		Cycle	Car		LB		Light	M & H	Fr. Bus	SD	DD
0700-0800	Pro	2.4	8.5	50.0	2.4	14.6	9.8	1.2	11.0	0.0	0.0
	Ocp	1.0	1.4	2.1	2.0	10.4	1.6	2.0	18.2	0.0	0.0
0800-0900	Pro	1.9	32.7	35.6	4.8	8.7	12.5	1.0	2.9	0.0	0.0
	Ocp	1.0	1.6	1.8	4.4	7.6	2.0	2.0	9.3	0.0	0.0
0900-1000	Pro	1.6	17.2	56.6	0.0	10.7	9.8	0.0	4.1	0.0	0.0
	Ocp	1.5	1.3	1.2	0.0	3.8	1.8	0.0	16.2	0.0	0.0
1000-1100	Pro	1.8	14.7	56.0	0.0	9.2	15.6	1.8	0.9	0.0	0.0
	Ocp	1.0	1.1	1.3	0.0	4.5	1.8	1.0	1.0	0.0	0.0
1100-1200	Pro	1.6	17.3	58.3	1.6	8.7	8.7	0.8	3.2	0.0	0.0
	Ocp	1.0	1.5	1.3	2.0	4.0	2.0	3.0	11.8	0.0	0.0
1200-1300 Peak hour	Pro	2.5	16.0	47.9	5.0	5.9	18.5	0.8	3.4	0.0	0.0
	Ocp	1.0	1.8	1.5	5.5	3.7	1.5	2.0	19.0	0.0	0.0
1300-1400	Pro	1.6	17.1	52.7	1.6	7.0	17.1	1.6	1.6	0.0	0.0
	Ocp	1.0	1.4	1.4	7.5	4.6	1.8	1.5	24.0	0.0	0.0
1400-1500	Pro	3.0	21.0	40.0	4.0	12.0	16.0	2.0	2.0	0.0	0.0
	Ocp	1.0	1.6	1.5	3.8	5.7	2.0	2.0	21.0	0.0	0.0
1500-1600	Pro	2.5	21.7	41.7	5.8	8.3	17.5	0.0	2.5	0.0	0.0
	Ocp	1.3	1.5	1.4	6.1	3.6	1.4	0.0	27.0	0.0	0.0
1600-1700	Pro	1.0	16.7	43.1	6.9	10.8	18.6	2.0	1.0	0.0	0.0
	Ocp	1.0	1.2	1.3	4.7	4.8	1.5	3.0	1.0	0.0	0.0
1700-1800	Pro	0.0	29.5	44.2	3.9	8.5	9.3	0.8	3.9	0.0	0.0
	Ocp	0.0	1.5	1.4	4.4	8.5	1.3	3.0	12.4	0.0	0.0
1800-1900	Pro	3.1	36.2	38.5	1.5	8.5	10.8	0.0	1.5	0.0	0.0
	Ocp	1.0	1.3	1.7	8.5	16.6	1.5	0.0	1.0	0.0	0.0
1900-2000	Pro	3.4	32.8	46.2	0.0	10.9	6.7	0.0	0.0	0.0	0.0
	Ocp	1.0	1.6	1.5	0.0	7.9	1.5	0.0	0.0	0.0	0.0
2000-2100	Pro	2.2	28.0	51.6	1.1	10.8	5.4	1.1	0.0	0.0	0.0
	Ocp	1.5	1.5	1.5	3.0	8.3	1.6	2.0	0.0	0.0	0.0
2100-2200	Pro	2.1	27.4	57.9	0.0	9.5	3.2	0.0	0.0	0.0	0.0
	Ocp	1.5	1.3	1.6	0.0	4.6	1.3	0.0	0.0	0.0	0.0
2200-2300	Pro	1.4	19.7	60.6	1.4	15.5	1.4	0.0	0.0	0.0	0.0
	Ocp	1.0	1.7	1.6	5.0	3.6	1.0	0.0	0.0	0.0	0.0
16 hours	Pro	2.0	22.6	48.5	2.5	9.7	11.7	0.8	2.3	0.0	0.0
	Ocp	1.1	1.5	1.5	4.9	6.5	1.7	2.1	15.4	0.0	0.0

Legend

- Pro.** Proportion of vehicles in % (Sum may not add up to 100% due to figure rounding)
- Ocp.** Average occupancy of vehicles
- M&H** Medium and Heavy