

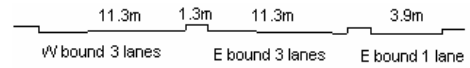
YEAR 2007

CORE STATION 5012

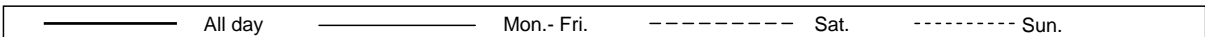
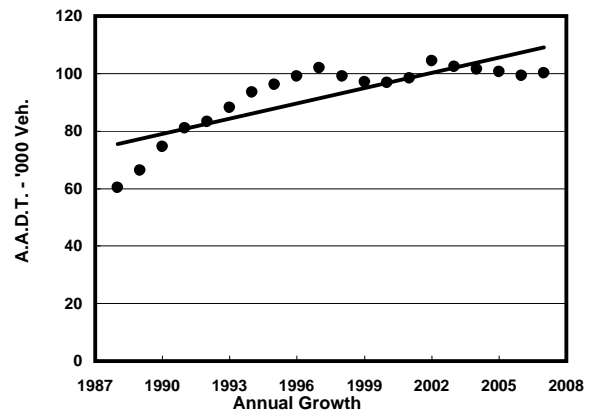
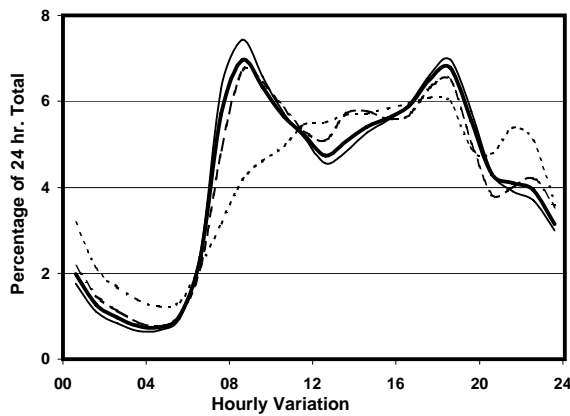
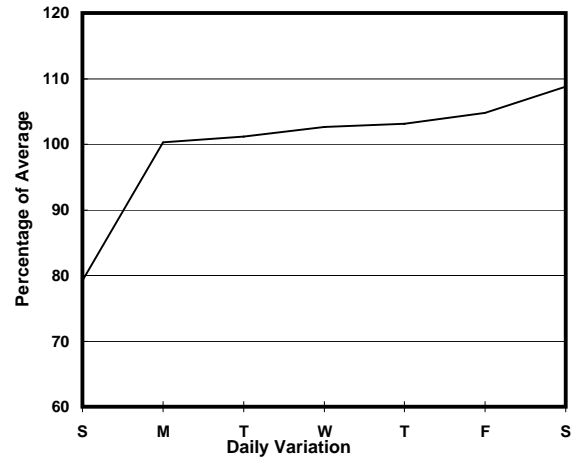
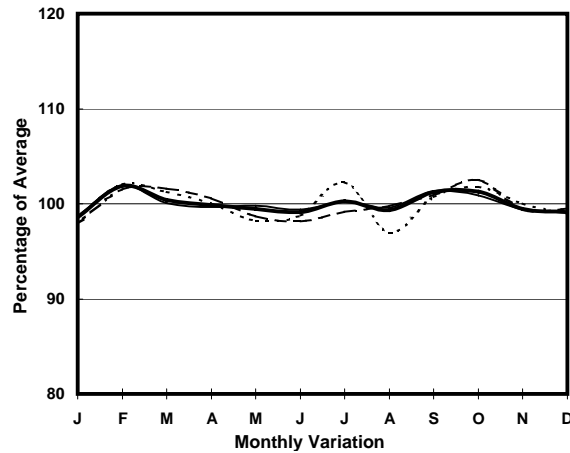
ROAD NETWORK MAJOR

ROAD TYPE EXPRESSWAY

LINK TUEN MUN RD (from SHAM TSENG to TSING LONG
HIGHWAY - TING KAU BRIDGE)



1. TRAFFIC FLOW VARIATION AND GROWTH



2. TRAFFIC CHARACTERISTICS (BY DIRECTION)

Parameter	All - Day	Mon. - Fri.	Sat.	Sun.
EAST BOUND				
A.A.D.T.	49720	51550	54570	39600
R 12 / 24 - %	74.8	76	74.3	68.1
R 16 / 24 - %	88.9	89.5	88.6	85.4
AM Peak Hour	0800-0900	0800-0900	0800-0900	0900-1000
One-way flow at AM peak hour	4370	4830	4730	2160
T - % (AM)	-	26	-	-
PM Peak Hour	1700-1800	1700-1800	1700-1800	1600-1700
One-way flow at PM peak hour	3140	3320	3290	2360
T - % (PM)	-	34.4	-	-
Prop.of commercial vehicles - 16 hr.	-	31.4	-	-

WEST BOUND				
A.A.D.T.	50480	52190	55590	40790
R 12 / 24 - %	64.9	65.8	65.5	58.4
R 16 / 24 - %	86.6	87.7	85.3	81.3
AM Peak Hour	0800-0900	0800-0900	0900-1000	0900-1000
One-way flow at AM peak hour	2600	2890	2810	1560
T - % (AM)	-	30.2	-	-
PM Peak Hour	1800-1900	1800-1900	1800-1900	1700-1800
One-way flow at PM peak hour	3810	4100	3930	2550
T - % (PM)	-	25	-	-
Prop.of commercial vehicles - 16 hr.	-	32.1	-	-

3. OTHER INFORMATION AND COMMENT

4. Vehicle classification and occupancy - Monday to Friday

Time		Class of vehicle									
		Motor	Private	Taxi	Private	PLB	Goods veh.		Non	Fr. Bus	
		Cycle	Car		LB		Light	M & H	Fr. Bus	SD	DD
0700-0800	Pro	2.7	32.3	8.5	0.6	0.8	22.3	19.0	6.9	0.0	7.0
	Ocp	1.1	1.2	1.9	3.1	12.5	1.5	1.2	26.2	0.0	64.1
0800-0900	Pro	2.6	44.7	5.6	0.3	0.4	18.9	15.7	5.8	0.1	5.9
	Ocp	1.1	1.3	1.8	7.3	13.9	1.5	1.2	35.3	16.0	73.6
0900-1000	Pro	1.0	36.5	4.7	0.4	0.6	24.4	22.8	3.5	0.0	6.1
	Ocp	1.1	1.2	1.6	4.6	11.5	1.4	1.2	14.8	0.0	38.3
1000-1100	Pro	1.1	27.7	4.6	0.5	0.6	27.3	29.8	2.3	0.0	6.0
	Ocp	1.1	1.3	1.9	3.4	10.4	1.6	1.2	14.8	0.0	30.7
1100-1200	Pro	1.2	28.2	4.2	0.3	0.6	27.4	29.4	2.5	0.1	6.1
	Ocp	1.1	1.4	1.8	3.8	8.0	1.5	1.3	8.9	1.0	31.1
1200-1300	Pro	1.4	28.4	5.0	0.5	0.5	28.2	26.7	2.7	0.0	6.6
	Ocp	1.0	1.3	1.8	2.8	10.8	1.5	1.2	9.5	0.0	27.4
1300-1400	Pro	0.7	22.4	5.1	1.0	0.2	30.2	33.2	1.5	0.0	5.7
	Ocp	1.0	1.3	1.8	3.2	5.5	1.5	1.2	9.0	0.0	29.6
1400-1500	Pro	1.0	26.4	3.3	0.4	0.4	30.6	30.0	2.4	0.0	5.4
	Ocp	1.1	1.4	2.0	4.8	7.8	1.5	1.3	13.9	0.0	29.3
1500-1600	Pro	1.1	25.8	3.9	1.0	0.4	28.8	30.0	3.4	0.0	5.7
	Ocp	1.0	1.3	1.9	5.2	11.4	1.4	1.3	13.1	0.0	33.1
1600-1700	Pro	1.2	26.7	4.8	0.7	0.6	29.0	27.4	2.8	0.0	6.9
	Ocp	1.1	1.4	1.8	4.3	12.4	1.5	1.2	12.6	0.0	36.0
1700-1800	Pro	2.1	38.6	3.8	0.7	0.3	25.7	18.9	2.9	0.0	7.0
	Ocp	1.0	1.3	1.7	4.2	10.0	1.5	1.2	10.8	0.0	47.0
1800-1900	Pro	2.4	46.4	3.4	0.5	0.5	19.8	15.1	5.8	0.0	6.1
	Ocp	1.1	1.3	2.0	2.2	13.8	1.5	1.2	17.9	0.0	53.9
1900-2000	Pro	1.9	51.7	5.2	0.1	0.9	15.9	11.5	6.2	0.1	6.6
	Ocp	1.2	1.5	1.8	2.0	10.1	1.4	1.1	17.0	12.0	52.5
2000-2100	Pro	1.1	55.5	7.1	0.2	0.9	12.9	10.2	4.6	0.0	7.5
	Ocp	1.2	1.5	2.0	2.0	9.4	1.4	1.1	10.7	0.0	44.5
2100-2200	Pro	1.2	55.0	9.9	0.0	0.2	14.0	11.0	2.4	0.0	6.4
	Ocp	1.1	1.4	1.7	0.0	12.0	1.4	1.1	11.9	0.0	50.7
2200-2300	Pro	0.7	52.8	14.4	0.0	0.9	10.3	9.8	3.6	0.0	7.6
	Ocp	1.0	1.5	1.6	0.0	10.3	1.4	1.3	10.9	0.0	39.2
16 hours	Pro	1.6	36.8	5.5	0.5	0.5	23.3	21.7	3.8	0.1	6.3
	Ocp	1.1	1.4	1.8	4.0	10.9	1.5	1.2	18.3	9.7	44.0

Legend

Pro. Proportion of vehicles in % (Sum may not add up to 100% due to figure rounding)
Ocp. Average occupancy of vehicles
M&H Medium and Heavy