

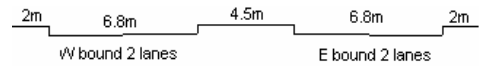
YEAR 2007

CORE STATION 5017

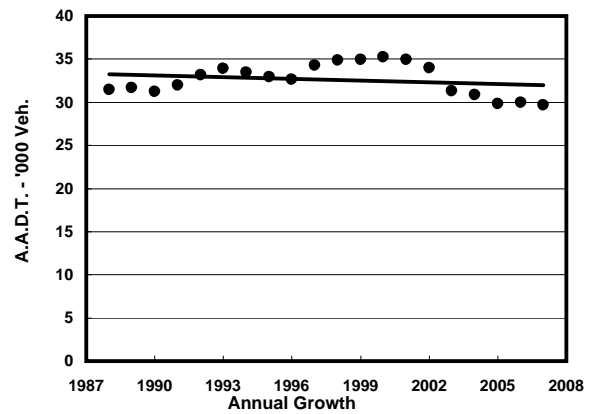
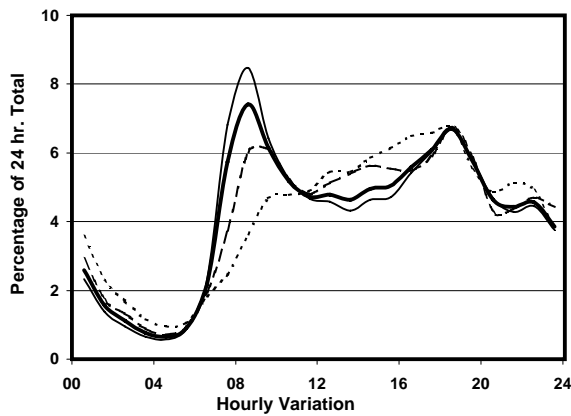
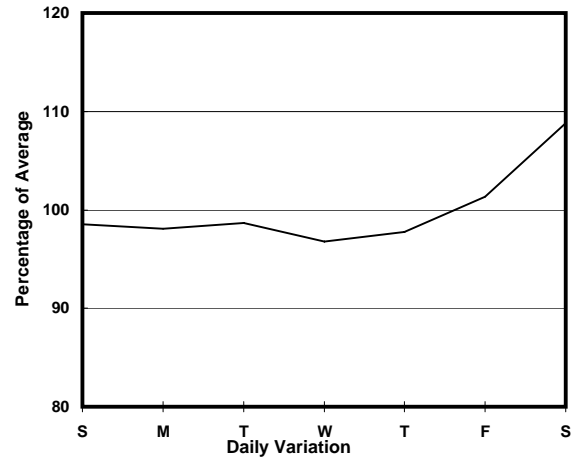
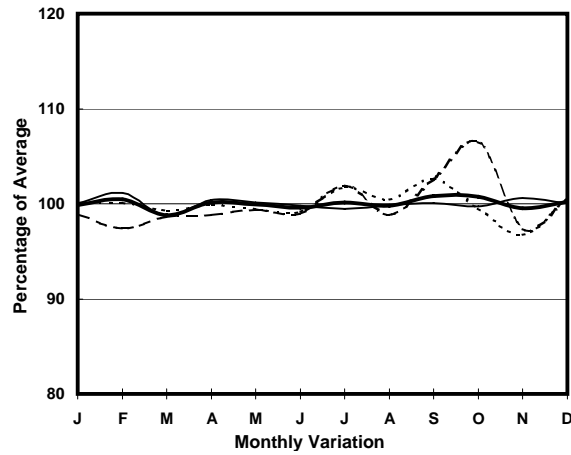
ROAD NETWORK MAJOR

ROAD TYPE RURAL ROAD

LINK CLEAR WATER BAY RD (from ANDERSON RD to HIRAM'S HIGHWAY)



1. TRAFFIC FLOW VARIATION AND GROWTH



— All day — Mon.- Fri. - - - - - Sat. - - - - - Sun.

2. TRAFFIC CHARACTERISTICS (BY DIRECTION)

Parameter	All - Day	Mon. - Fri.	Sat.	Sun.
EAST BOUND				
A.A.D.T.	14520	14270	15860	14490
R 12 / 24 - %	61	61	61.6	60.6
R 16 / 24 - %	84.8	85.6	83.7	82
AM Peak Hour	0800-0900	0800-0900	0900-1000	0900-1000
One-way flow at AM peak hour	780	870	790	580
T - % (AM)	-	8.4	-	-
PM Peak Hour	1800-1900	1800-1900	1800-1900	1600-1700
One-way flow at PM peak hour	1060	1090	1060	950
T - % (PM)	-	2	-	-
Prop.of commercial vehicles - 16 hr.	-	6.6	-	-
WEST BOUND				
A.A.D.T.	15150	14970	16470	14790
R 12 / 24 - %	72.7	74.7	69.9	65.8
R 16 / 24 - %	87.8	88.6	86.4	85.3
AM Peak Hour	0800-0900	0800-0900	0800-0900	0900-1000
One-way flow at AM peak hour	1410	1600	1300	800
T - % (AM)	-	5.8	-	-
PM Peak Hour	1700-1800	1700-1800	1800-1900	1800-1900
One-way flow at PM peak hour	960	940	1130	1080
T - % (PM)	-	8.1	-	-
Prop.of commercial vehicles - 16 hr.	-	6.5	-	-

3. OTHER INFORMATION AND COMMENT

4. Vehicle classification and occupancy - Monday to Friday

Time		Class of vehicle									
		Motor	Private	Taxi	Private	PLB	Goods veh.		Non	Fr. Bus	
		Cycle	Car		LB		Light	M & H	Fr. Bus	SD	DD
0700-0800	Pro	4.0	34.8	9.3	3.4	19.2	17.8	3.1	6.8	0.0	1.6
	Ocp	1.1	2.0	2.1	4.8	13.4	1.9	1.0	13.8	0.0	54.7
0800-0900	Pro	4.9	61.2	8.1	0.7	9.3	9.1	2.2	3.2	0.0	1.3
	Ocp	1.1	1.5	1.9	3.0	14.7	1.9	1.3	9.6	0.0	58.7
0900-1000	Pro	3.0	60.9	6.3	1.9	8.2	12.3	3.2	2.5	0.0	1.7
	Ocp	1.0	1.5	1.9	2.1	9.7	1.6	1.3	16.5	0.0	35.5
1000-1100	Pro	4.4	45.3	9.1	0.9	13.2	21.1	3.5	0.6	0.0	1.9
	Ocp	1.1	1.4	1.5	1.7	12.4	1.8	1.1	1.0	0.0	35.8
1100-1200	Pro	5.0	45.8	6.3	2.8	11.9	21.0	3.1	2.5	0.0	1.6
	Ocp	1.1	1.5	2.1	2.2	10.5	1.7	1.1	8.5	0.0	32.2
1200-1300	Pro	4.4	47.6	7.9	3.4	11.0	16.8	1.7	5.1	0.0	2.1
	Ocp	1.2	1.6	1.7	6.4	9.7	1.8	1.4	10.7	0.0	22.7
1300-1400	Pro	6.1	44.1	7.2	2.5	12.3	20.2	3.3	1.8	0.0	2.4
	Ocp	1.1	1.4	1.8	3.4	11.8	1.7	1.2	9.2	0.0	28.6
1400-1500	Pro	3.5	43.5	7.0	3.8	9.9	23.4	4.5	2.2	0.0	2.1
	Ocp	1.0	1.6	1.7	2.3	11.4	1.7	1.6	18.9	0.0	26.8
1500-1600	Pro	3.5	44.3	6.7	2.2	7.6	22.9	5.4	5.4	0.0	1.9
	Ocp	1.0	1.5	1.9	4.9	12.0	1.6	1.4	8.8	0.0	24.9
1600-1700	Pro	6.1	47.7	8.1	2.9	9.6	18.0	2.0	3.5	0.0	2.0
	Ocp	1.1	1.5	1.4	3.1	14.0	1.9	1.3	6.2	0.0	41.0
1700-1800	Pro	5.8	45.7	8.0	2.5	11.8	18.8	3.0	2.5	0.0	1.8
	Ocp	1.2	1.6	1.7	5.3	13.1	1.8	1.1	6.0	0.0	47.5
1800-1900	Pro	6.0	59.1	10.9	0.4	12.8	8.4	0.2	0.7	0.0	1.4
	Ocp	1.1	1.4	1.8	1.5	15.7	2.3	1.0	17.0	0.0	64.6
1900-2000	Pro	3.4	60.2	11.3	1.3	14.9	5.8	1.0	0.8	0.0	1.3
	Ocp	1.2	1.6	1.7	2.8	13.5	1.4	1.3	5.3	0.0	38.0
2000-2100	Pro	2.8	58.2	14.5	0.3	12.7	8.4	0.6	0.6	0.1	1.9
	Ocp	1.2	1.6	1.9	1.0	11.3	1.6	1.0	7.0	1.0	16.5
2100-2200	Pro	5.5	64.7	9.8	0.4	10.9	5.1	0.7	0.4	0.0	2.5
	Ocp	1.1	1.6	1.7	2.0	10.8	1.9	1.0	12.0	0.0	16.2
2200-2300	Pro	7.6	59.9	16.7	0.0	9.7	3.6	0.3	0.3	0.0	1.8
	Ocp	1.2	1.6	1.8	0.0	11.8	1.8	2.0	2.0	0.0	17.0
16 hours	Pro	4.7	52.2	9.2	1.8	11.5	14.1	2.3	2.5	0.1	1.8
	Ocp	1.1	1.5	1.8	3.6	12.5	1.8	1.3	10.6	1.0	35.4

Legend

- Pro.** Proportion of vehicles in % (Sum may not add up to 100% due to figure rounding)
- Ocp.** Average occupancy of vehicles
- M&H** Medium and Heavy