

YEAR 2007

CORE STATION 5018

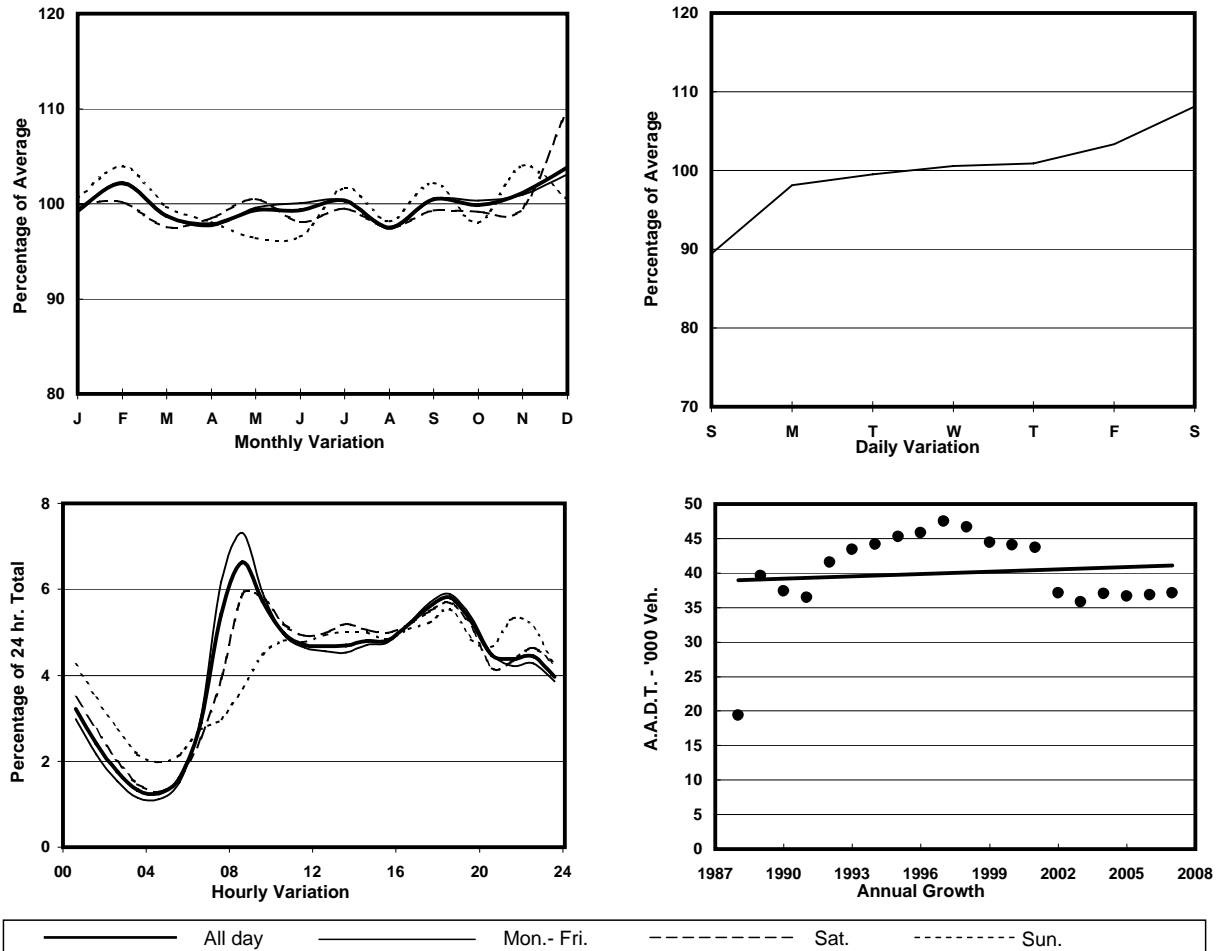
ROAD NETWORK MAJOR

ROAD TYPE DISTRICT DISTRIBUTOR

LINK TSING YI NORTH BRIDGE (from TSUEN TSING INT to TAM KON SHAN INT)



## 1. TRAFFIC FLOW VARIATION AND GROWTH



## 2. TRAFFIC CHARACTERISTICS (BY DIRECTION)

Parameter	All - Day	Mon. - Fri.	Sat.	Sun.
<b>EAST BOUND</b>				
A.A.D.T.	20480	20640	22350	18610
R 12 / 24 - %	65.2	66.5	64.3	59.2
R 16 / 24 - %	82.4	83.4	81.6	77.9
AM Peak Hour	0800-0900	0800-0900	0800-0900	0900-1000
One-way flow at AM peak hour	1550	1730	1500	940
T - % (AM)	-	14.4	-	-
PM Peak Hour	1800-1900	1700-1800	1800-1900	1800-1900
One-way flow at PM peak hour	1140	1160	1240	1010
T - % (PM)	-	22.9	-	-
Prop.of commercial vehicles - 16 hr.	-	17.1	-	-
<b>WEST BOUND</b>				
A.A.D.T.	16600	16820	18030	14730
R 12 / 24 - %	60.3	61.7	59.9	52.8
R 16 / 24 - %	80.6	81.9	79.5	74.4
AM Peak Hour	0800-0900	0800-0900	0900-1000	0900-1000
One-way flow at AM peak hour	910	1010	940	560
T - % (AM)	-	17.9	-	-
PM Peak Hour	1800-1900	1800-1900	1800-1900	1800-1900
One-way flow at PM peak hour	1010	1050	1060	830
T - % (PM)	-	14.4	-	-
Prop.of commercial vehicles - 16 hr.	-	19.8	-	-

## 3. OTHER INFORMATION AND COMMENT

**4. Vehicle classification and occupancy - Monday to Friday**

Time		Class of vehicle									
		Motor	Private	Taxi	Private	PLB	Goods veh.		Non	Fr. Bus	
		Cycle	Car		LB		Light	M & H	Fr. Bus	SD	DD
0700-0800	Pro	2.9	16.0	29.1	1.3	10.5	18.7	3.5	7.1	0.1	10.9
	Ocp	1.1	1.7	1.9	3.9	11.0	1.6	1.4	11.5	1.0	39.7
0800-0900	Pro	4.1	27.9	26.4	1.5	7.2	17.1	3.9	4.1	0.1	7.7
	Ocp	1.2	1.4	1.9	3.9	9.5	1.5	1.3	10.9	1.0	41.2
0900-1000	Pro	1.9	23.9	27.3	0.5	6.7	19.9	7.7	3.2	0.0	8.9
	Ocp	1.0	1.3	1.7	2.3	9.1	1.6	1.6	4.3	0.0	22.4
1000-1100	Pro	2.3	17.7	21.4	1.2	7.2	31.1	8.6	1.2	0.1	9.3
	Ocp	1.1	1.6	1.7	3.8	6.7	1.6	1.4	2.0	1.0	17.0
1100-1200	Pro	3.5	13.7	15.7	1.2	7.5	37.1	10.0	3.0	0.0	8.4
	Ocp	1.0	1.5	1.9	2.4	7.2	1.6	1.5	7.8	0.0	21.1
1200-1300	Pro	0.8	15.7	16.6	1.7	7.7	35.6	8.3	3.9	0.0	9.7
	Ocp	1.0	1.4	1.9	3.5	8.4	1.7	1.6	8.3	0.0	20.8
1300-1400	Pro	0.9	17.9	21.2	0.7	7.3	32.4	8.5	3.3	0.0	7.9
	Ocp	1.0	1.5	1.8	1.3	8.6	1.6	1.4	6.4	0.0	24.6
1400-1500	Pro	2.5	25.0	16.3	1.2	6.2	29.5	7.7	3.0	0.0	8.6
	Ocp	1.2	1.8	1.8	2.0	8.4	1.5	1.5	6.3	0.0	20.5
1500-1600	Pro	2.7	21.5	16.2	2.5	7.2	28.9	8.2	3.7	0.0	8.9
	Ocp	1.0	1.5	1.6	3.7	8.1	1.6	1.6	9.6	0.0	22.0
1600-1700	Pro	2.1	18.4	23.8	2.1	7.0	25.7	4.2	8.2	0.0	8.4
	Ocp	1.1	1.6	1.8	3.3	11.9	1.6	1.5	6.7	0.0	28.1
1700-1800	Pro	3.0	18.4	19.3	1.9	7.1	27.2	5.4	9.0	0.0	8.7
	Ocp	1.3	1.6	1.9	3.9	12.1	1.5	1.5	6.8	0.0	30.6
1800-1900	Pro	4.3	34.7	17.5	1.5	8.0	19.2	2.6	3.2	0.0	9.1
	Ocp	1.1	1.6	2.1	5.0	11.1	1.6	1.4	13.2	0.0	40.0
1900-2000	Pro	2.6	37.6	18.7	0.6	7.9	16.1	3.5	3.7	0.0	9.3
	Ocp	1.1	1.5	2.0	2.3	13.0	1.5	1.4	8.4	0.0	30.9
2000-2100	Pro	3.5	36.0	24.3	0.5	7.5	14.0	3.7	0.9	0.0	9.5
	Ocp	1.1	1.8	2.0	3.5	9.4	1.6	1.4	4.5	0.0	20.0
2100-2200	Pro	3.6	35.1	30.6	0.9	9.9	7.5	1.2	0.9	0.0	10.3
	Ocp	1.2	1.8	2.0	5.3	7.8	1.7	1.0	1.0	0.0	24.2
2200-2300	Pro	2.3	39.5	32.9	0.5	6.9	5.7	3.2	1.1	0.0	8.0
	Ocp	1.1	1.7	2.2	2.5	7.2	1.9	1.1	19.8	0.0	21.7
16 hours	Pro	2.8	25.0	22.6	1.2	7.6	22.5	5.5	3.9	0.1	8.9
	Ocp	1.1	1.6	1.9	3.5	9.6	1.6	1.4	8.4	1.0	27.6

**Legend**

- Pro.** Proportion of vehicles in % (Sum may not add up to 100% due to figure rounding)
- Ocp.** Average occupancy of vehicles
- M&H** Medium and Heavy