

YEAR

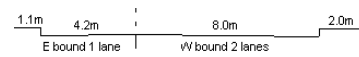
2007

LINK

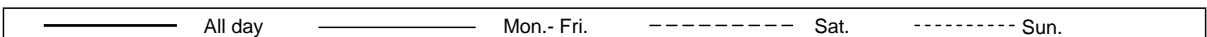
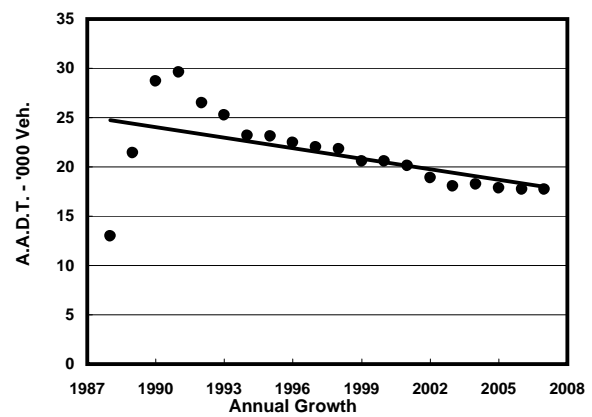
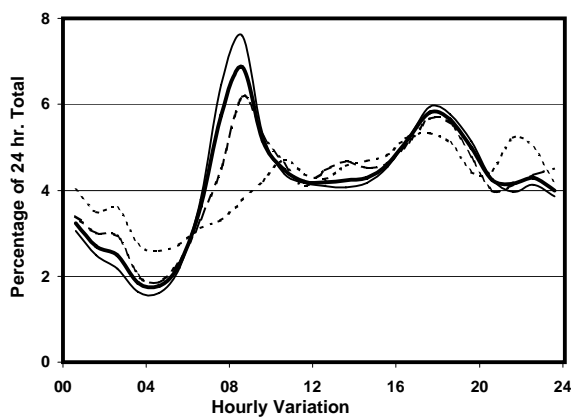
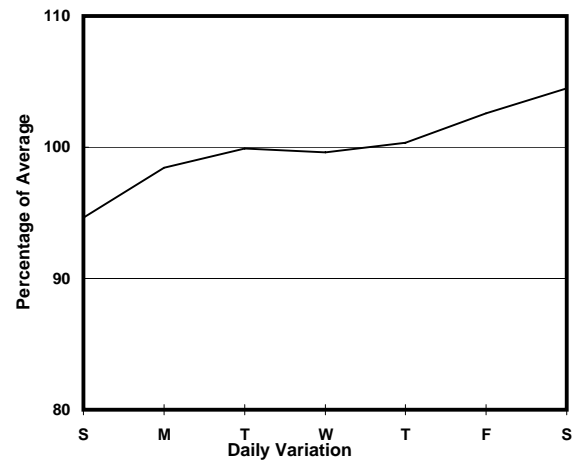
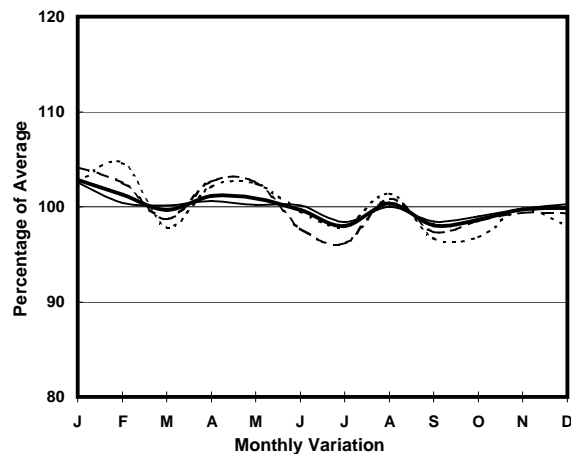
PO LAM RD (from ANDERSON RD to TSUI LAM RD)

CORE STATION
ROAD NETWORK
ROAD TYPE

5023
MAJOR
DISTRICT DISTRIBUTOR



1. TRAFFIC FLOW VARIATION AND GROWTH



2. TRAFFIC CHARACTERISTICS (BY DIRECTION)

| Parameter | All - Day | Mon. - Fri. | Sat. | Sun. |
|--------------------------------------|-----------|-------------|-----------|-----------|
| EAST BOUND | | | | |
| A.A.D.T. | 8700 | 8710 | 9180 | 8370 |
| R 12 / 24 - % | 59.2 | 60.2 | 59 | 54.1 |
| R 16 / 24 - % | 78.5 | 79.5 | 77.5 | 74.1 |
| AM Peak Hour | 0800-0900 | 0800-0900 | 0900-1000 | 0900-1000 |
| One-way flow at AM peak hour | 460 | 500 | 460 | 340 |
| T - % (AM) | - | 14.7 | - | - |
| PM Peak Hour | 1800-1900 | 1800-1900 | 1700-1800 | 1600-1700 |
| One-way flow at PM peak hour | 550 | 580 | 550 | 480 |
| T - % (PM) | - | 11 | - | - |
| Prop.of commercial vehicles - 16 hr. | - | 14.5 | - | - |

| | | | | |
|--------------------------------------|-----------|-----------|-----------|-----------|
| WEST BOUND | | | | |
| A.A.D.T. | 9050 | 9120 | 9380 | 8500 |
| R 12 / 24 - % | 61.5 | 63.2 | 59.7 | 54.8 |
| R 16 / 24 - % | 77.7 | 78.9 | 75.8 | 73.1 |
| AM Peak Hour | 0800-0900 | 0800-0900 | 0800-0900 | 0900-1000 |
| One-way flow at AM peak hour | 760 | 860 | 720 | 370 |
| T - % (AM) | - | 10.1 | - | - |
| PM Peak Hour | 1700-1800 | 1700-1800 | 1700-1800 | 1700-1800 |
| One-way flow at PM peak hour | 500 | 500 | 510 | 470 |
| T - % (PM) | - | 15.3 | - | - |
| Prop.of commercial vehicles - 16 hr. | - | 14.9 | - | - |

3. OTHER INFORMATION AND COMMENT

4. Vehicle classification and occupancy - Monday to Friday

| Time | | Class of vehicle | | | | | | | | | |
|-----------|-----|------------------|---------|------|---------|------|------------|-------|---------|---------|------|
| | | Motor | Private | Taxi | Private | PLB | Goods veh. | | Non | Fr. Bus | |
| | | Cycle | Car | | LB | | Light | M & H | Fr. Bus | SD | DD |
| 0700-0800 | Pro | 10.5 | 15.0 | 25.8 | 3.1 | 8.4 | 18.1 | 4.9 | 5.6 | 0.0 | 8.6 |
| | Ocp | 1.1 | 1.3 | 1.5 | 3.6 | 10.8 | 1.4 | 1.1 | 10.3 | 0.0 | 40.8 |
| 0800-0900 | Pro | 6.6 | 29.3 | 25.3 | 3.0 | 6.6 | 17.5 | 2.0 | 4.9 | 0.0 | 4.9 |
| | Ocp | 1.1 | 1.3 | 1.6 | 5.3 | 11.6 | 1.2 | 1.0 | 6.7 | 0.0 | 46.7 |
| 0900-1000 | Pro | 3.1 | 28.5 | 20.6 | 3.1 | 9.7 | 17.5 | 7.0 | 2.6 | 0.0 | 7.9 |
| | Ocp | 1.1 | 1.3 | 1.4 | 1.6 | 8.3 | 1.5 | 1.0 | 13.0 | 0.0 | 27.0 |
| 1000-1100 | Pro | 6.6 | 16.3 | 21.8 | 3.0 | 9.1 | 28.4 | 4.2 | 0.6 | 0.0 | 10.0 |
| | Ocp | 1.0 | 1.1 | 1.5 | 1.6 | 4.5 | 1.4 | 1.1 | 1.0 | 0.0 | 23.9 |
| 1100-1200 | Pro | 5.0 | 15.6 | 25.6 | 6.2 | 9.4 | 18.7 | 4.4 | 5.6 | 0.0 | 9.5 |
| | Ocp | 1.1 | 1.3 | 1.5 | 1.3 | 4.7 | 1.2 | 1.0 | 1.1 | 0.0 | 21.0 |
| 1200-1300 | Pro | 5.3 | 16.5 | 25.3 | 3.5 | 9.4 | 19.4 | 5.3 | 6.5 | 0.0 | 8.8 |
| | Ocp | 1.0 | 1.2 | 1.6 | 3.5 | 4.8 | 1.3 | 1.1 | 4.5 | 0.0 | 18.5 |
| 1300-1400 | Pro | 4.8 | 20.3 | 19.7 | 3.0 | 8.9 | 28.6 | 4.2 | 1.8 | 0.0 | 8.8 |
| | Ocp | 1.0 | 1.2 | 1.6 | 1.6 | 6.9 | 1.3 | 1.1 | 6.7 | 0.0 | 19.2 |
| 1400-1500 | Pro | 9.7 | 17.6 | 20.6 | 2.4 | 8.5 | 25.5 | 3.6 | 2.4 | 0.0 | 9.6 |
| | Ocp | 1.0 | 1.4 | 1.4 | 1.5 | 5.5 | 1.5 | 1.5 | 4.3 | 0.0 | 20.3 |
| 1500-1600 | Pro | 4.2 | 21.9 | 22.5 | 5.5 | 8.5 | 19.4 | 4.9 | 4.2 | 0.0 | 9.0 |
| | Ocp | 1.0 | 1.5 | 1.5 | 2.8 | 6.3 | 1.7 | 1.1 | 7.3 | 0.0 | 25.5 |
| 1600-1700 | Pro | 6.5 | 13.0 | 28.8 | 5.3 | 6.1 | 22.3 | 4.9 | 6.1 | 0.0 | 7.2 |
| | Ocp | 1.0 | 1.2 | 1.3 | 2.7 | 10.9 | 1.4 | 1.3 | 7.1 | 0.0 | 34.6 |
| 1700-1800 | Pro | 8.7 | 20.9 | 23.0 | 4.8 | 6.5 | 21.3 | 0.0 | 7.0 | 0.0 | 7.8 |
| | Ocp | 1.0 | 1.4 | 1.4 | 2.1 | 10.1 | 1.5 | 0.0 | 1.8 | 0.0 | 36.4 |
| 1800-1900 | Pro | 12.3 | 24.5 | 21.0 | 3.5 | 7.4 | 19.3 | 2.6 | 1.8 | 0.1 | 7.6 |
| | Ocp | 1.1 | 1.3 | 1.5 | 1.3 | 13.6 | 1.2 | 1.0 | 2.0 | 15.0 | 52.0 |
| 1900-2000 | Pro | 8.7 | 33.9 | 21.3 | 1.3 | 6.5 | 18.7 | 2.2 | 0.0 | 0.0 | 7.5 |
| | Ocp | 1.3 | 1.2 | 1.6 | 2.3 | 12.4 | 1.5 | 1.2 | 0.0 | 0.0 | 41.9 |
| 2000-2100 | Pro | 7.1 | 37.9 | 30.2 | 0.6 | 7.1 | 8.2 | 0.0 | 0.0 | 0.0 | 8.8 |
| | Ocp | 1.3 | 1.7 | 1.6 | 2.0 | 10.2 | 1.3 | 0.0 | 0.0 | 0.0 | 28.7 |
| 2100-2200 | Pro | 7.0 | 31.4 | 39.5 | 0.6 | 3.5 | 8.1 | 1.2 | 0.0 | 0.0 | 8.9 |
| | Ocp | 1.2 | 1.3 | 1.6 | 2.0 | 8.2 | 1.4 | 1.5 | 0.0 | 0.0 | 25.8 |
| 2200-2300 | Pro | 7.7 | 36.7 | 33.4 | 0.0 | 4.4 | 4.9 | 3.3 | 0.5 | 0.0 | 9.0 |
| | Ocp | 1.4 | 1.6 | 1.6 | 0.0 | 9.9 | 1.3 | 1.3 | 1.0 | 0.0 | 25.7 |
| 16 hours | Pro | 7.3 | 23.9 | 25.2 | 3.1 | 7.4 | 18.4 | 3.3 | 3.3 | 0.1 | 8.0 |
| | Ocp | 1.1 | 1.3 | 1.5 | 2.6 | 8.9 | 1.4 | 1.1 | 5.9 | 15.0 | 31.4 |

Legend

- Pro.** Proportion of vehicles in % (Sum may not add up to 100% due to figure rounding)
- Ocp.** Average occupancy of vehicles
- M&H** Medium and Heavy