

YEAR 2007

CORE STATION 5033

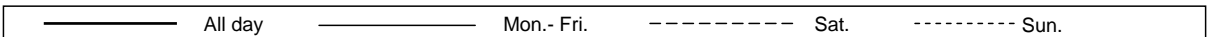
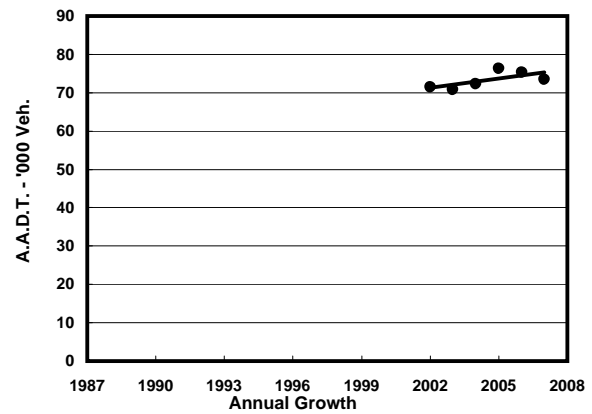
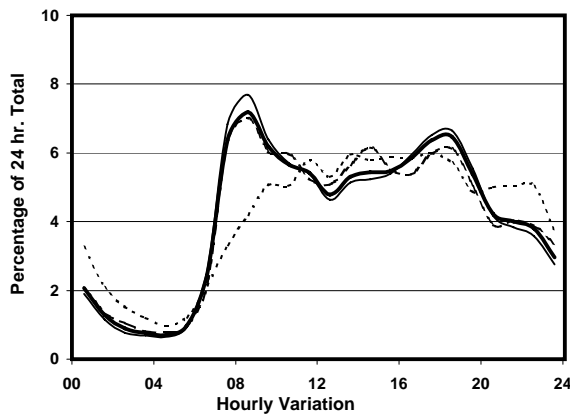
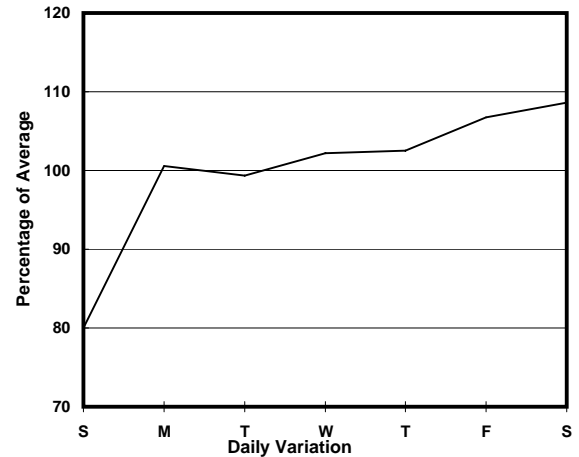
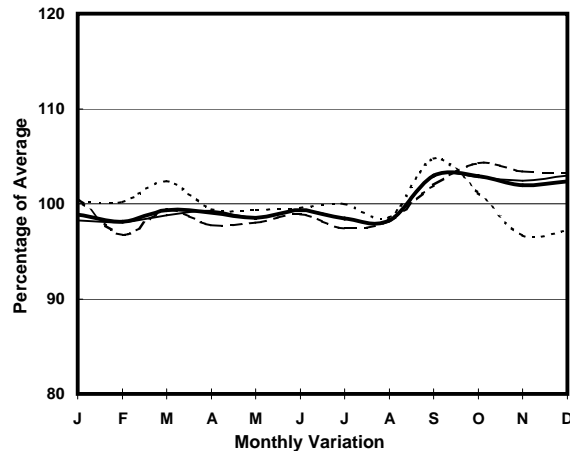
ROAD NETWORK MAJOR

ROAD TYPE EXPRESSWAY

LINK TSING LONG HIGHWAY - TING KAU BRIDGE (from
TSING YI NW INT to TUEN MUN RD)



1. TRAFFIC FLOW VARIATION AND GROWTH



2. TRAFFIC CHARACTERISTICS (BY DIRECTION)

Parameter	All - Day	Mon. - Fri.	Sat.	Sun.
SOUTH BOUND				
A.A.D.T.	38890	40140	42140	32300
R 12 / 24 - %	75.9	77	75.1	70.2
R 16 / 24 - %	89.3	89.8	89.2	86.7
AM Peak Hour	0800-0900	0800-0900	0800-0900	0900-1000
One-way flow at AM peak hour	3540	3940	3750	1900
T - % (AM)	-	27.4	-	-
PM Peak Hour	1700-1800	1700-1800	1700-1800	1600-1700
One-way flow at PM peak hour	2430	2580	2350	2010
T - % (PM)	-	35.6	-	-
Prop.of commercial vehicles - 16 hr.	-	31.2	-	-
NORTH BOUND				
A.A.D.T.	34620	35820	38700	27140
R 12 / 24 - %	64.4	65.4	65.6	56.4
R 16 / 24 - %	86.3	87.4	85.6	80.5
AM Peak Hour	0900-1000	0800-0900	0800-0900	0900-1000
One-way flow at AM peak hour	1770	1910	1920	1110
T - % (AM)	-	30.1	-	-
PM Peak Hour	1800-1900	1800-1900	1800-1900	1700-1800
One-way flow at PM peak hour	2560	2800	2630	1620
T - % (PM)	-	24	-	-
Prop.of commercial vehicles - 16 hr.	-	30.8	-	-

3. OTHER INFORMATION AND COMMENT

4. Vehicle classification and occupancy - Monday to Friday

Time		Class of vehicle									
		Motor	Private	Taxi	Private	PLB	Goods veh.		Non	Fr. Bus	
		Cycle	Car		LB		Light	M & H	Fr. Bus	SD	DD
0700-0800	Pro	3.8	26.7	9.8	0.7	0.8	23.3	21.7	7.5	0.0	5.6
	Ocp	1.1	1.3	1.7	9.9	13.0	1.5	1.1	29.0	0.0	68.9
0800-0900	Pro	2.7	45.9	4.2	0.3	0.5	18.1	18.1	5.9	0.1	4.4
	Ocp	1.1	1.3	1.8	6.2	12.6	1.6	1.1	35.3	1.0	77.3
0900-1000	Pro	1.6	39.1	4.5	0.6	0.6	21.2	24.3	3.3	0.0	4.7
	Ocp	1.1	1.5	1.8	2.6	10.2	1.6	1.1	17.2	0.0	43.6
1000-1100	Pro	0.5	31.9	3.2	0.4	0.5	25.1	31.7	2.3	0.1	4.4
	Ocp	1.0	1.5	1.8	1.6	7.7	1.5	1.1	15.5	1.0	35.1
1100-1200	Pro	0.9	36.4	3.5	0.8	0.7	22.5	28.1	2.8	0.0	4.4
	Ocp	1.0	1.5	1.9	2.5	6.7	1.5	1.1	17.9	0.0	36.5
1200-1300	Pro	0.4	35.3	2.9	0.7	0.6	20.9	31.5	3.0	0.0	4.7
	Ocp	1.0	1.5	1.9	3.9	8.3	1.5	1.1	12.7	0.0	29.3
1300-1400	Pro	0.9	31.5	3.2	0.9	0.6	24.9	29.2	3.6	0.0	5.1
	Ocp	1.0	1.5	2.2	1.4	6.0	1.5	1.1	11.3	0.0	29.5
1400-1500	Pro	1.1	32.0	4.4	1.4	0.5	30.8	22.0	3.7	0.0	4.1
	Ocp	1.1	1.7	2.0	2.8	7.8	1.5	1.2	17.7	0.0	27.6
1500-1600	Pro	1.2	36.4	4.2	0.8	0.6	23.2	26.3	2.9	0.0	4.3
	Ocp	1.3	1.8	2.2	4.4	7.4	1.5	1.2	20.5	0.0	28.6
1600-1700	Pro	1.2	34.6	4.0	0.8	0.7	25.7	24.8	3.5	0.0	4.7
	Ocp	1.1	1.6	2.0	2.0	8.6	1.6	1.1	11.0	0.0	35.1
1700-1800	Pro	1.3	37.5	3.0	0.6	0.4	26.7	22.5	2.9	0.0	5.0
	Ocp	1.1	1.5	1.9	2.1	9.5	1.5	1.1	16.7	0.0	44.1
1800-1900	Pro	1.0	57.6	2.0	0.1	0.4	14.0	15.8	4.9	0.0	4.0
	Ocp	1.1	1.5	1.8	6.0	13.4	1.5	1.1	28.0	0.0	60.4
1900-2000	Pro	1.3	53.3	3.5	0.1	0.8	14.1	14.4	6.5	0.1	5.9
	Ocp	1.1	1.4	2.3	3.0	11.8	1.5	1.1	19.9	6.0	60.1
2000-2100	Pro	1.1	54.1	7.3	0.5	0.6	11.7	14.8	4.2	0.0	5.6
	Ocp	1.1	1.6	2.1	3.4	8.8	1.5	1.1	15.4	0.0	41.9
2100-2200	Pro	1.8	52.1	7.6	0.1	0.7	11.7	15.6	4.2	0.0	6.2
	Ocp	1.0	1.4	2.0	1.0	9.0	1.5	1.1	11.3	0.0	34.2
2200-2300	Pro	1.1	58.0	12.2	0.7	0.8	7.4	9.3	3.6	0.0	7.0
	Ocp	1.0	1.4	2.0	1.4	9.3	1.4	1.1	14.3	0.0	40.3
16 hours	Pro	1.4	41.4	4.6	0.6	0.6	20.4	22.0	4.1	0.1	4.9
	Ocp	1.1	1.5	2.0	3.3	9.6	1.5	1.1	21.2	2.7	45.1

Legend

- Pro.** Proportion of vehicles in % (Sum may not add up to 100% due to figure rounding)
- Ocp.** Average occupancy of vehicles
- M&H** Medium and Heavy