

YEAR

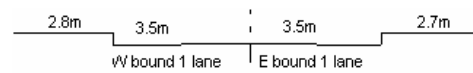
2007

LINK

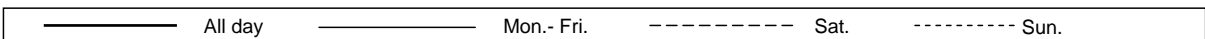
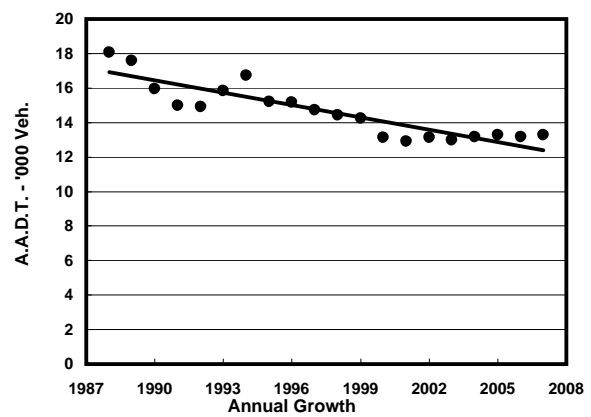
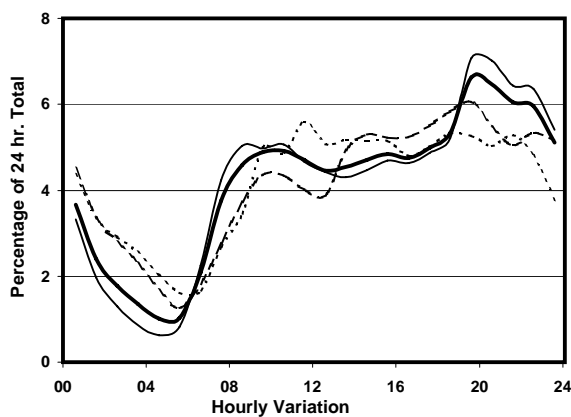
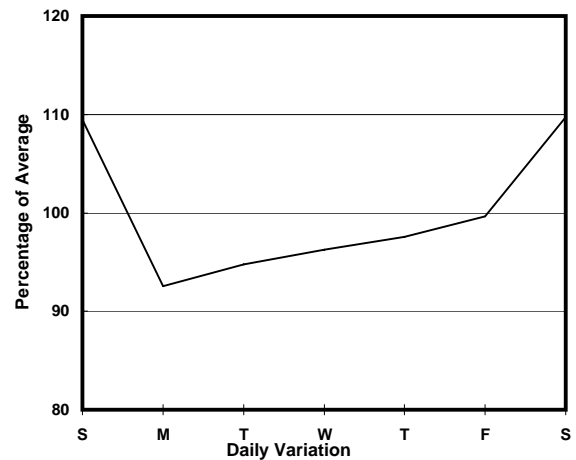
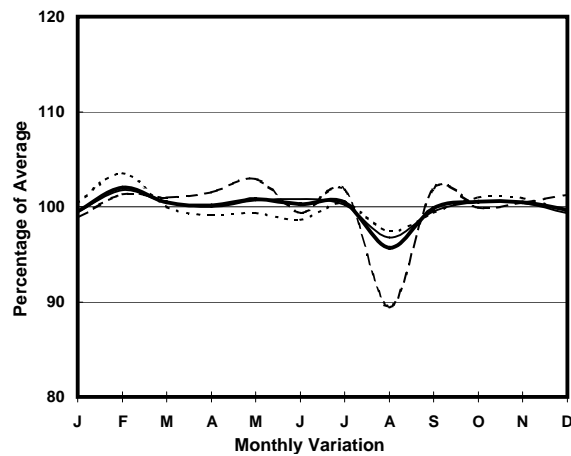
CAINE RD (from SEYMOUR RD to ABERDEEN ST)

CORE STATION
ROAD NETWORK
ROAD TYPE

1013
MAJOR
DISTRICT DISTRIBUTOR



1. TRAFFIC FLOW VARIATION AND GROWTH



2. TRAFFIC CHARACTERISTICS (BY DIRECTION)

Parameter	All - Day	Mon. - Fri.	Sat.	Sun.
EAST BOUND				
A.A.D.T.	9230	9150	9690	8850
R 12 / 24 - %	60.9	62.4	57.4	56.7
R 16 / 24 - %	82.6	85	77.6	76.2
AM Peak Hour	0900-1000	0900-1000	0900-1000	0900-1000
One-way flow at AM peak hour	500	520	520	410
T - % (AM)	-	-	-	-
PM Peak Hour	1800-1900	1800-1900	1800-1900	1800-1900
One-way flow at PM peak hour	530	540	530	470
T - % (PM)	-	-	-	-
Prop.of commercial vehicles - 16 hr.	-	-	-	-
WEST BOUND				
A.A.D.T.	4060	3570	4820	5630
R 12 / 24 - %	46.6	41.7	50.6	58.3
R 16 / 24 - %	79.2	79.7	76.1	80.2
AM Peak Hour	0900-1000	0700-0800	0900-1000	0900-1000
One-way flow at AM peak hour	150	140	120	310
T - % (AM)	-	-	-	-
PM Peak Hour	1600-1700	1600-1700	1800-1900	1800-1900
One-way flow at PM peak hour	180	140	320	300
T - % (PM)	-	-	-	-
Prop.of commercial vehicles - 16 hr.	-	-	-	-

3. OTHER INFORMATION AND COMMENT