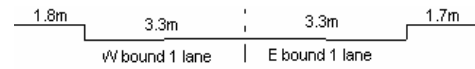


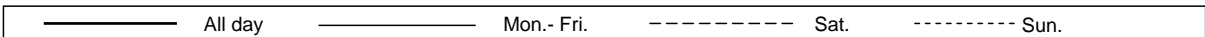
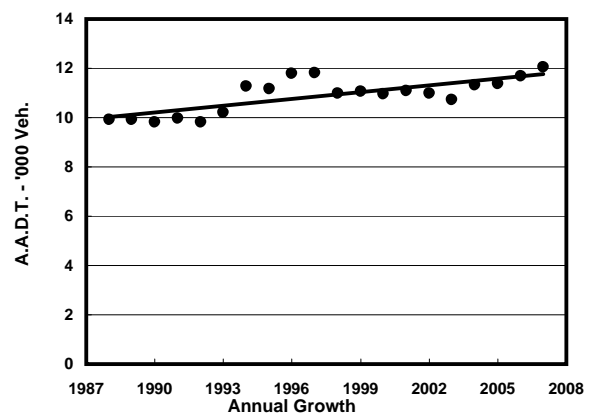
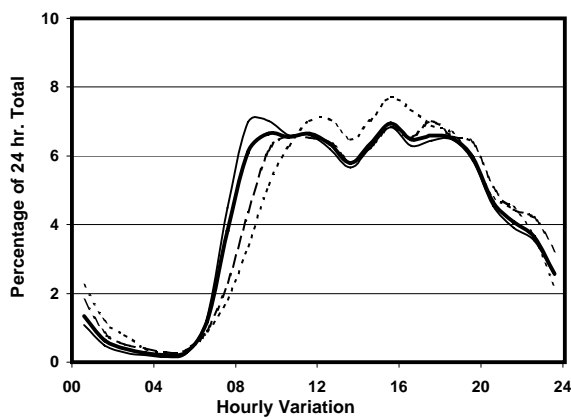
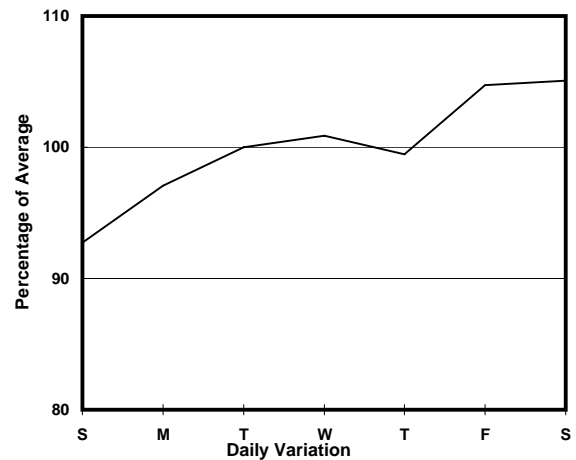
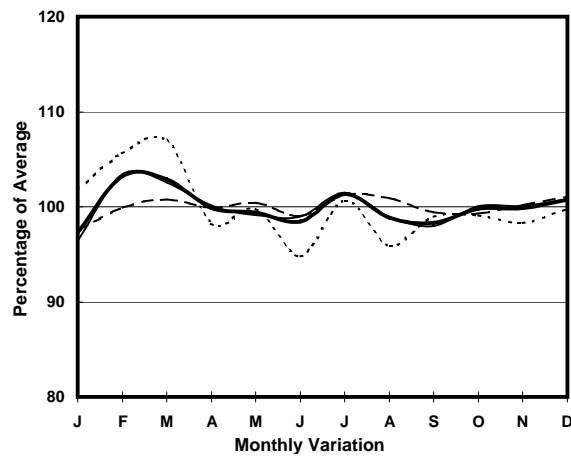
YEAR

2007

LINK PEAK RD (from MT. AUSTIN RD to MAGAZINE GAP RD)

CORE STATION  
ROAD NETWORK  
ROAD TYPE1014  
MAJOR  
DISTRICT DISTRIBUTOR

## 1. TRAFFIC FLOW VARIATION AND GROWTH



## 2. TRAFFIC CHARACTERISTICS (BY DIRECTION)

Parameter	All - Day	Mon. - Fri.	Sat.	Sun.
<b>EAST BOUND</b>				
A.A.D.T.	6000	6060	6290	5600
R 12 / 24 - %	74.3	75.2	71.5	72.8
R 16 / 24 - %	93.1	93.7	91.7	91.7
AM Peak Hour	0900-1000	0900-1000	0900-1000	0900-1000
One-way flow at AM peak hour	410	430	400	300
T - % (AM)	-	-	-	-
PM Peak Hour	1800-1900	1800-1900	1700-1800	1600-1700
One-way flow at PM peak hour	400	410	430	410
T - % (PM)	-	-	-	-
Prop.of commercial vehicles - 16 hr.	-	-	-	-

<b>WEST BOUND</b>				
A.A.D.T.	6050	6090	6420	5620
R 12 / 24 - %	75.2	76.5	71.4	72.9
R 16 / 24 - %	93.1	93.8	91.6	91.7
AM Peak Hour	0900-1000	0800-0900	0900-1000	0900-1000
One-way flow at AM peak hour	390	420	380	280
T - % (AM)	-	-	-	-
PM Peak Hour	1700-1800	1700-1800	1700-1800	1600-1700
One-way flow at PM peak hour	400	400	460	410
T - % (PM)	-	-	-	-
Prop.of commercial vehicles - 16 hr.	-	-	-	-

## 3. OTHER INFORMATION AND COMMENT