

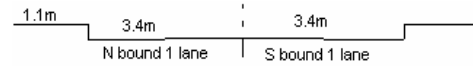
YEAR 2007

CORE STATION 1015

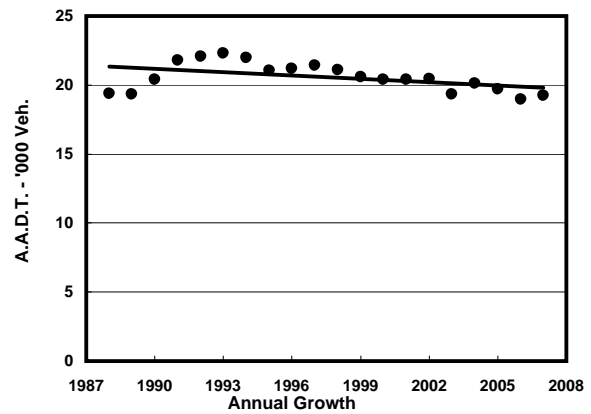
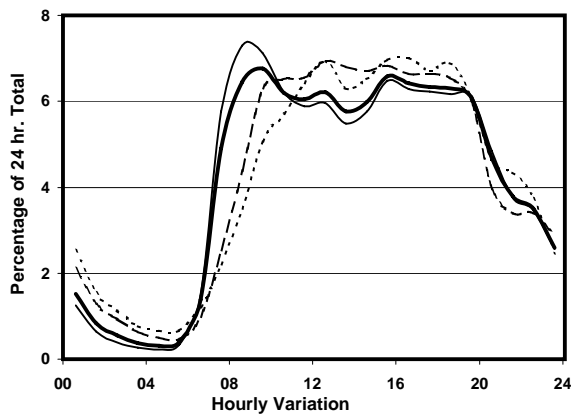
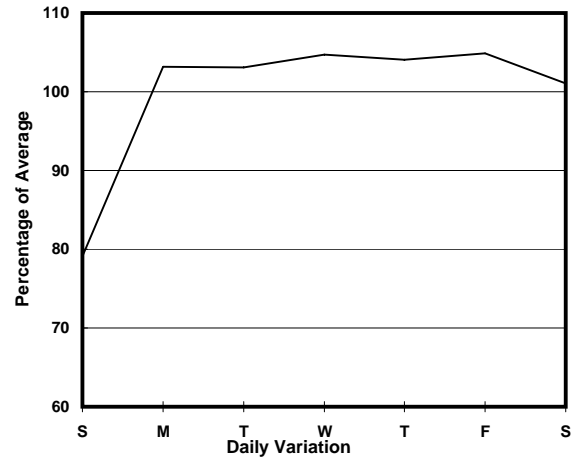
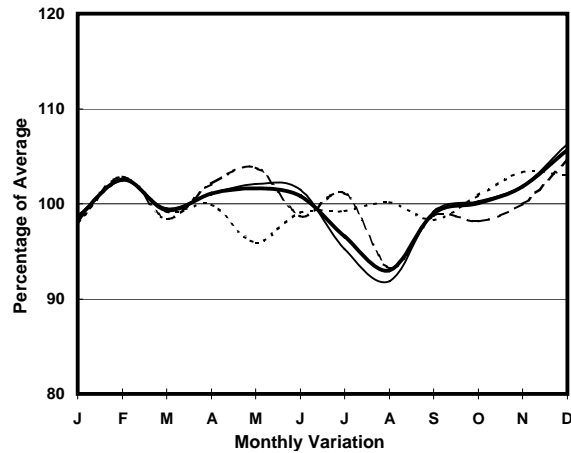
ROAD NETWORK MAJOR

ROAD TYPE DISTRICT DISTRIBUTOR

LINK STUBBS RD (from QUEEN'S RD E to STUBBS RD FO
<H119> NORTHERN END)



1. TRAFFIC FLOW VARIATION AND GROWTH



— All day - - - - - Mon.- Fri. - - - - - Sat. Sun.

2. TRAFFIC CHARACTERISTICS (BY DIRECTION)

Parameter	All - Day	Mon. - Fri.	Sat.	Sun.
SOUTH BOUND				
A.A.D.T.	7960	8380	7970	6480
R 12 / 24 - %	72.6	73.1	72.7	69.6
R 16 / 24 - %	91.8	92.6	89.9	89
AM Peak Hour	0900-1000	0900-1000	0900-1000	0900-1000
One-way flow at AM peak hour	540	590	550	360
T - % (AM)	-	-	-	-
PM Peak Hour	1600-1700	1800-1900	1600-1700	1600-1700
One-way flow at PM peak hour	490	520	520	450
T - % (PM)	-	-	-	-
Prop.of commercial vehicles - 16 hr.	-	-	-	-

NORTH BOUND				
A.A.D.T.	11290	11850	11700	8940
R 12 / 24 - %	75	75.8	74	70.8
R 16 / 24 - %	92.2	93	90.5	89
AM Peak Hour	0800-0900	0800-0900	0900-1000	0900-1000
One-way flow at AM peak hour	790	960	690	420
T - % (AM)	-	-	-	-
PM Peak Hour	1700-1800	1700-1800	1800-1900	1800-1900
One-way flow at PM peak hour	760	790	810	660
T - % (PM)	-	-	-	-
Prop.of commercial vehicles - 16 hr.	-	-	-	-

3. OTHER INFORMATION AND COMMENT