

YEAR 2007

CORE STATION 1028

ROAD NETWORK MAJOR

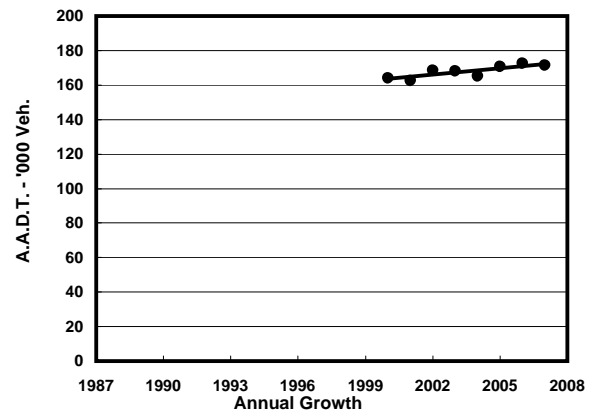
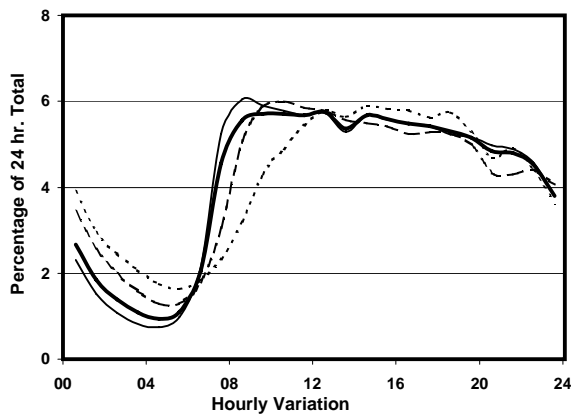
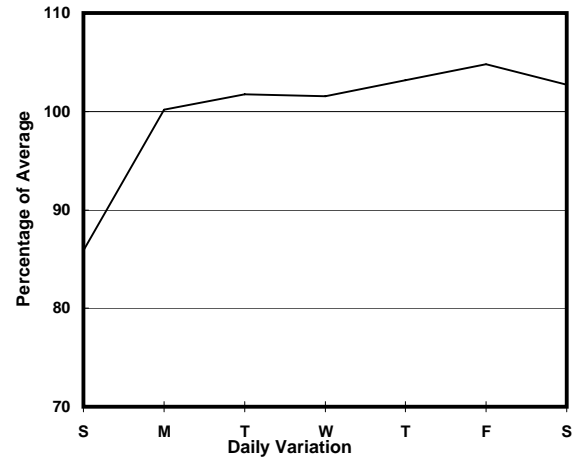
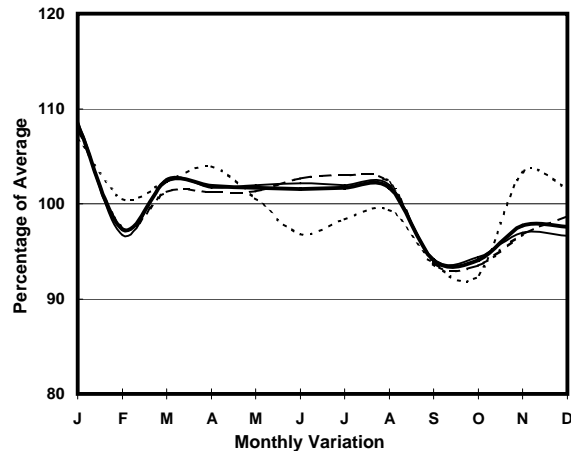
ROAD TYPE URBAN TRUNK ROAD

LINK GLOUCESTER RD (from ARSENAL ST to CROSS HARBOUR TUNNEL S. INT)

6.5m 15.8m 2.8m 19m 5.3m

E bound 5 lanes W bound 5 lanes

## 1. TRAFFIC FLOW VARIATION AND GROWTH



— All day — Mon.- Fri. - - - - - Sat. . . . . Sun.

## 2. TRAFFIC CHARACTERISTICS (BY DIRECTION)

Parameter	All - Day	Mon. - Fri.	Sat.	Sun.
<b>EAST BOUND</b>				
A.A.D.T.	79430	82440	78960	69140
R 12 / 24 - %	65.2	66.6	62.5	60.2
R 16 / 24 - %	85.4	87.2	81.1	79.9
AM Peak Hour	0900-1000	0900-1000	0900-1000	0900-1000
One-way flow at AM peak hour	4580	5010	4420	2810
T - % (AM)	-	-	-	-
PM Peak Hour	1600-1700	1600-1700	1600-1700	1600-1700
One-way flow at PM peak hour	4290	4400	4190	4080
T - % (PM)	-	-	-	-
Prop.of commercial vehicles - 16 hr.	-	-	-	-
<b>WEST BOUND</b>				
A.A.D.T.	91840	94180	97980	78930
R 12 / 24 - %	66.3	67.5	65	60.7
R 16 / 24 - %	84.8	86.2	82.6	79.7
AM Peak Hour	0800-0900	0800-0900	0900-1000	0900-1000
One-way flow at AM peak hour	5190	5750	5960	3580
T - % (AM)	-	-	-	-
PM Peak Hour	1700-1800	1700-1800	1800-1900	1800-1900
One-way flow at PM peak hour	5140	5310	5330	4530
T - % (PM)	-	-	-	-
Prop.of commercial vehicles - 16 hr.	-	-	-	-

## 3. OTHER INFORMATION AND COMMENT