

YEAR

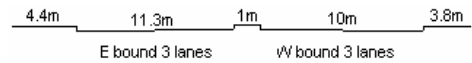
2007

LINK

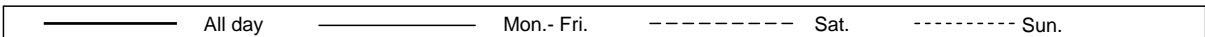
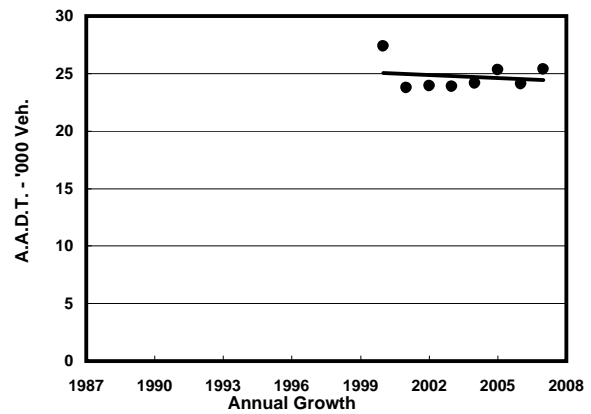
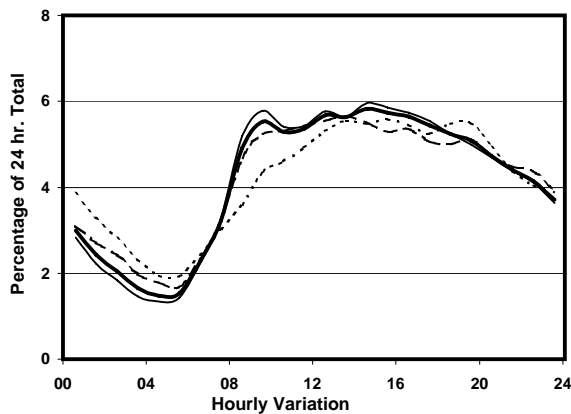
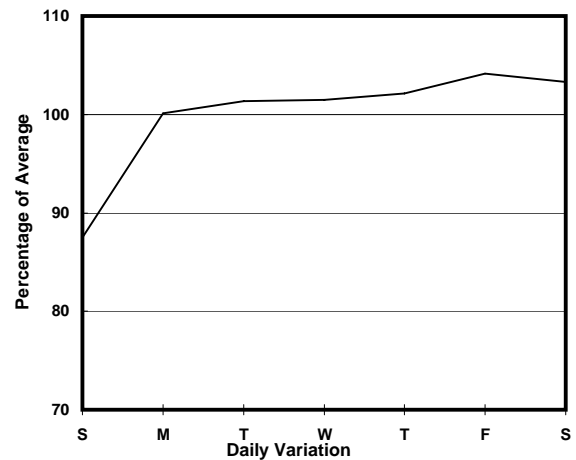
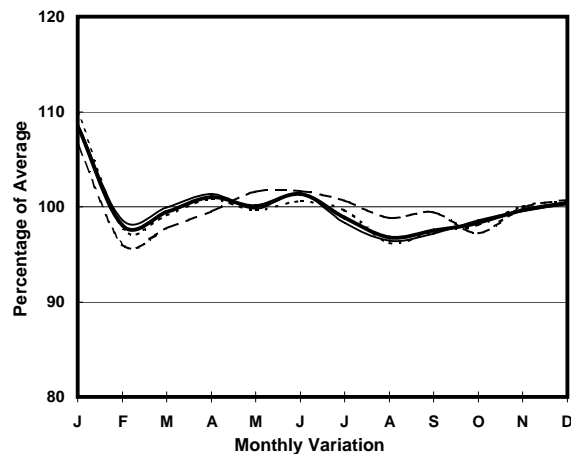
HENNESSY RD (from LUARD RD to FLEMING RD)

CORE STATION
ROAD NETWORK
ROAD TYPE

1029
MAJOR
PRIMARY DISTRIBUTOR



1. TRAFFIC FLOW VARIATION AND GROWTH



2. TRAFFIC CHARACTERISTICS (BY DIRECTION)

Parameter	All - Day	Mon. - Fri.	Sat.	Sun.
EAST BOUND				
A.A.D.T.	13650	13990	14410	11880
R 12 / 24 - %	62.7	64.1	60.4	57.1
R 16 / 24 - %	80.7	82	78.7	75.7
AM Peak Hour	0900-1000	0900-1000	0900-1000	0900-1000
One-way flow at AM peak hour	740	790	740	500
T - % (AM)	-	-	-	-
PM Peak Hour	1600-1700	1600-1700	1600-1700	1800-1900
One-way flow at PM peak hour	760	800	770	650
T - % (PM)	-	-	-	-
Prop.of commercial vehicles - 16 hr.	-	-	-	-
WEST BOUND				
A.A.D.T.	11750	12060	12030	10480
R 12 / 24 - %	64.6	65.7	62.6	60.3
R 16 / 24 - %	83.3	84.2	81.8	79.5
AM Peak Hour	0900-1000	0900-1000	0900-1000	0900-1000
One-way flow at AM peak hour	670	720	640	470
T - % (AM)	-	-	-	-
PM Peak Hour	1600-1700	1700-1800	1800-1900	1600-1700
One-way flow at PM peak hour	670	700	650	600
T - % (PM)	-	-	-	-
Prop.of commercial vehicles - 16 hr.	-	-	-	-

3. OTHER INFORMATION AND COMMENT