

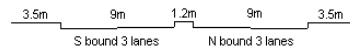
YEAR

2007

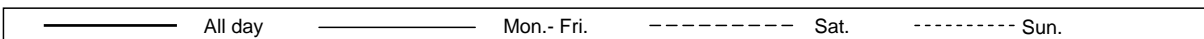
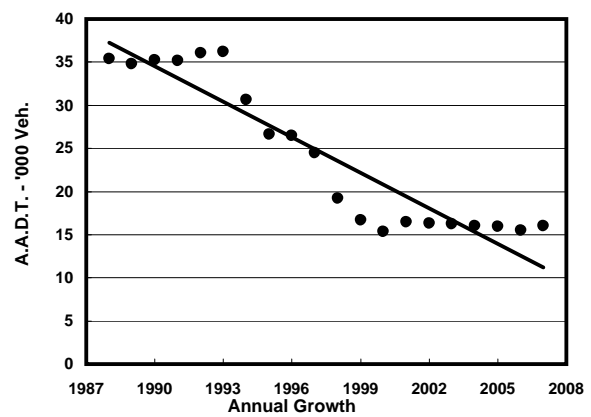
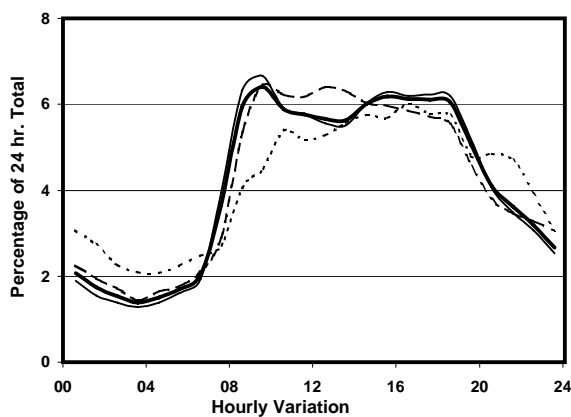
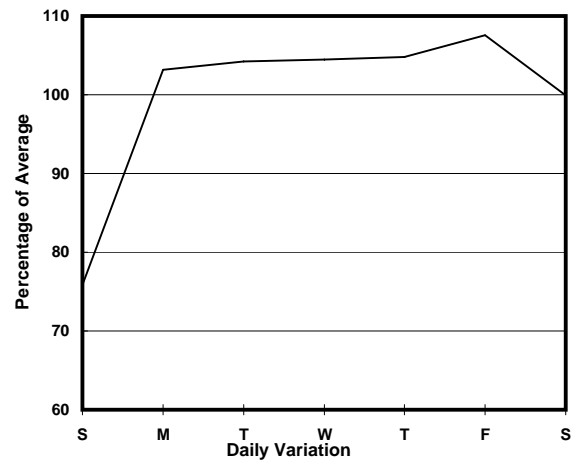
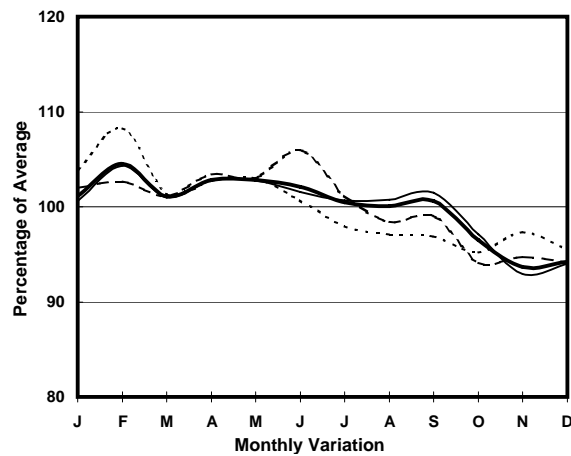
LINK LAI CHI KOK RD (from TONKIN ST to HING WAH ST)

CORE STATION
ROAD NETWORK
ROAD TYPE

3008
MAJOR
PRIMARY DISTRIBUTOR



1. TRAFFIC FLOW VARIATION AND GROWTH



2. TRAFFIC CHARACTERISTICS (BY DIRECTION)

Parameter	All - Day	Mon. - Fri.	Sat.	Sun.
SOUTH BOUND				
A.A.D.T.	6620	6920	6740	5580
R 12 / 24 - %	68.5	69.2	69.2	63.6
R 16 / 24 - %	84.3	85	83.7	80.6
AM Peak Hour	0900-1000	0900-1000	0900-1000	0900-1000
One-way flow at AM peak hour	380	410	390	260
T - % (AM)	-	-	-	-
PM Peak Hour	1800-1900	1800-1900	1800-1900	1600-1700
One-way flow at PM peak hour	420	440	420	360
T - % (PM)	-	-	-	-
Prop.of commercial vehicles - 16 hr.	-	-	-	-

NORTH BOUND				
A.A.D.T.	9380	10080	9440	6760
R 12 / 24 - %	70.1	71.7	68.7	60.1
R 16 / 24 - %	86.2	87.4	84.3	79.5
AM Peak Hour	0900-1000	0900-1000	0900-1000	0900-1000
One-way flow at AM peak hour	640	720	650	300
T - % (AM)	-	-	-	-
PM Peak Hour	1600-1700	1700-1800	1600-1700	1600-1700
One-way flow at PM peak hour	580	640	550	380
T - % (PM)	-	-	-	-
Prop.of commercial vehicles - 16 hr.	-	-	-	-

3. OTHER INFORMATION AND COMMENT