

YEAR

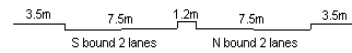
2007

LINK

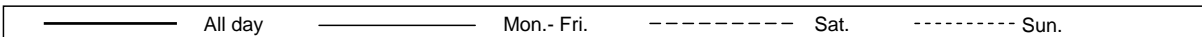
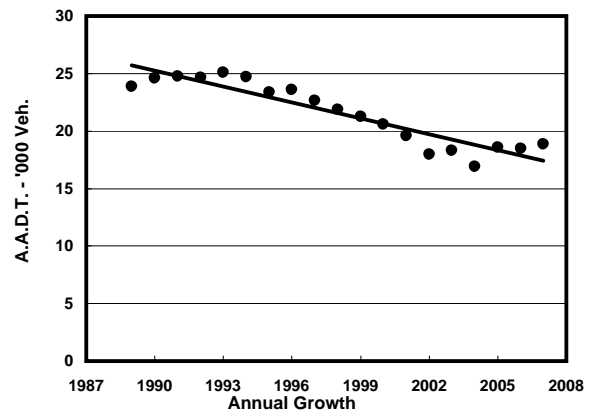
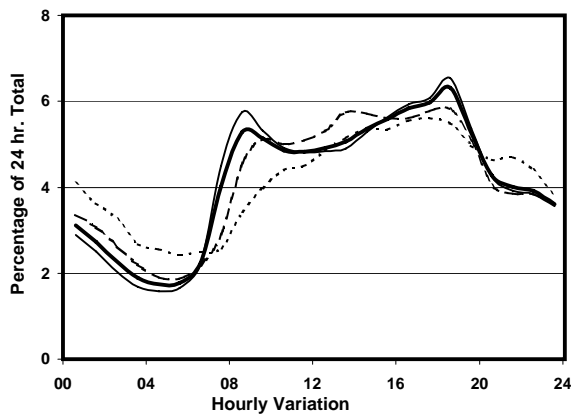
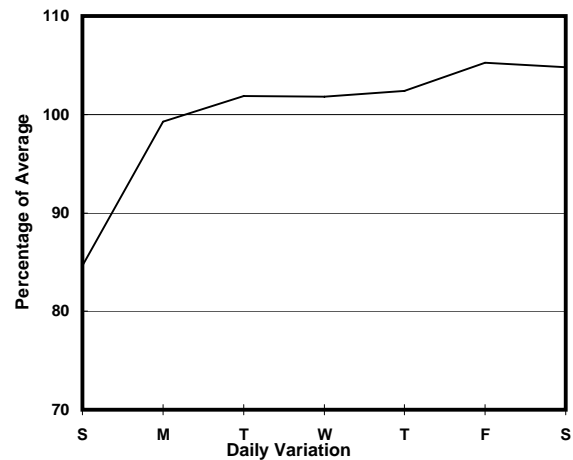
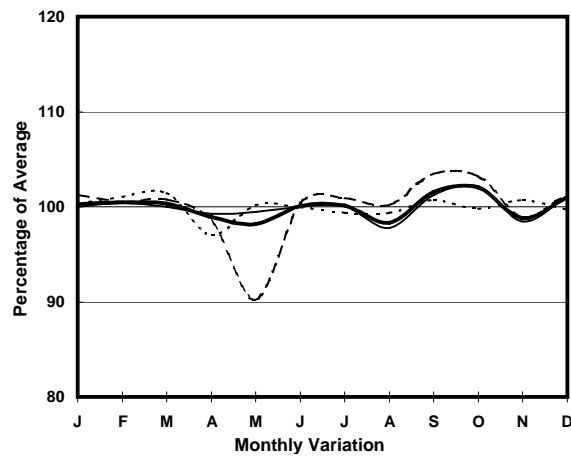
TAI PO RD (from NAM CHEONG ST to KWEILIN ST)

CORE STATION  
ROAD NETWORK  
ROAD TYPE

3009  
MAJOR  
PRIMARY DISTRIBUTOR



## 1. TRAFFIC FLOW VARIATION AND GROWTH



## 2. TRAFFIC CHARACTERISTICS (BY DIRECTION)

Parameter	All - Day	Mon. - Fri.	Sat.	Sun.
<b>SOUTH BOUND</b>				
A.A.D.T.	9720	9920	10410	8630
R 12 / 24 - %	61.7	63	60.6	55.5
R 16 / 24 - %	78.9	80.2	77.2	73.5
AM Peak Hour	0800-0900	0800-0900	0900-1000	0900-1000
One-way flow at AM peak hour	550	620	540	350
T - % (AM)	-	-	-	-
PM Peak Hour	1800-1900	1800-1900	1800-1900	1700-1800
One-way flow at PM peak hour	570	600	590	470
T - % (PM)	-	-	-	-
Prop.of commercial vehicles - 16 hr.	-	-	-	-
<b>NORTH BOUND</b>				
A.A.D.T.	9170	9520	9580	7470
R 12 / 24 - %	64.8	66.1	64.2	57.2
R 16 / 24 - %	82.5	83.7	81.2	76.7
AM Peak Hour	0800-0900	0800-0900	0900-1000	0900-1000
One-way flow at AM peak hour	450	500	490	290
T - % (AM)	-	-	-	-
PM Peak Hour	1800-1900	1800-1900	1600-1700	1800-1900
One-way flow at PM peak hour	620	670	580	440
T - % (PM)	-	-	-	-
Prop.of commercial vehicles - 16 hr.	-	-	-	-

## 3. OTHER INFORMATION AND COMMENT