

YEAR

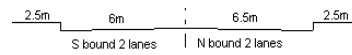
2007

LINK

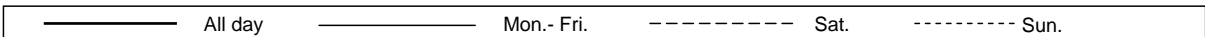
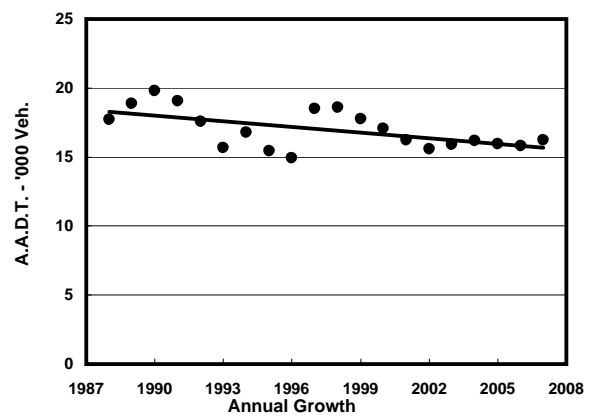
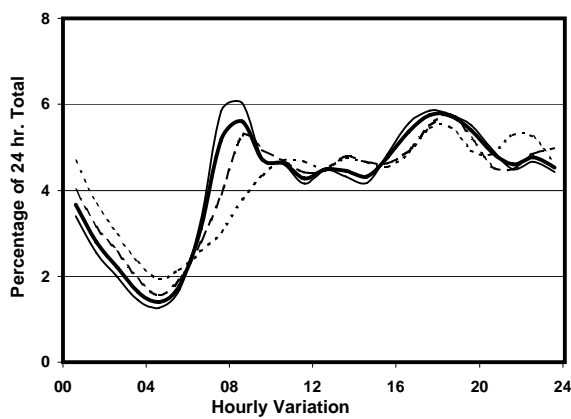
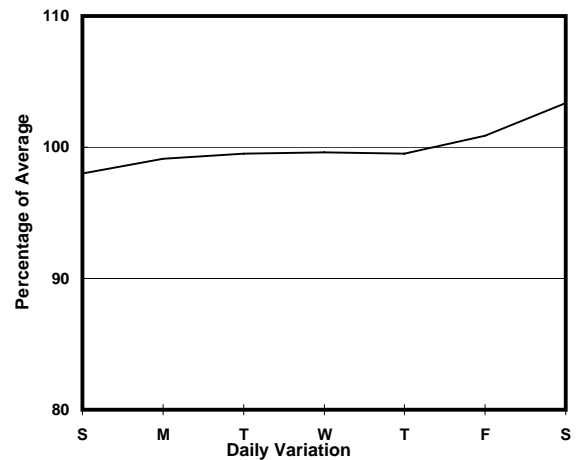
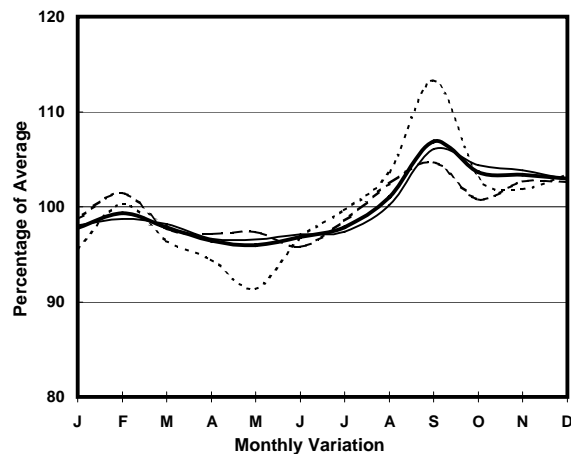
HIU KWONG ST (from SAU MING RD to HIP WO ST)

CORE STATION
ROAD NETWORK
ROAD TYPE

3018
MAJOR
DISTRICT DISTRIBUTOR



1. TRAFFIC FLOW VARIATION AND GROWTH



2. TRAFFIC CHARACTERISTICS (BY DIRECTION)

Parameter	All - Day	Mon. - Fri.	Sat.	Sun.
SOUTH BOUND				
A.A.D.T.	7340	7280	7690	7360
R 12 / 24 - %	56.9	57.7	56.4	53.8
R 16 / 24 - %	78.6	79.5	77.2	75.4
AM Peak Hour	0700-0800	0700-0800	0800-0900	0900-1000
One-way flow at AM peak hour	360	400	340	300
T - % (AM)	-	-	-	-
PM Peak Hour	1800-1900	1800-1900	1800-1900	1800-1900
One-way flow at PM peak hour	450	450	480	420
T - % (PM)	-	-	-	-
Prop.of commercial vehicles - 16 hr.	-	-	-	-

NORTH BOUND				
A.A.D.T.	8890	8920	9110	8540
R 12 / 24 - %	61.1	62.5	59.3	55.7
R 16 / 24 - %	79.2	80.4	77.1	74.9
AM Peak Hour	0800-0900	0800-0900	0800-0900	0900-1000
One-way flow at AM peak hour	560	610	540	390
T - % (AM)	-	-	-	-
PM Peak Hour	1700-1800	1700-1800	1800-1900	1700-1800
One-way flow at PM peak hour	510	520	500	460
T - % (PM)	-	-	-	-
Prop.of commercial vehicles - 16 hr.	-	-	-	-

3. OTHER INFORMATION AND COMMENT