

YEAR

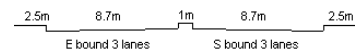
2007

LINK

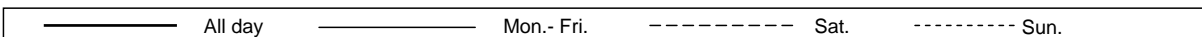
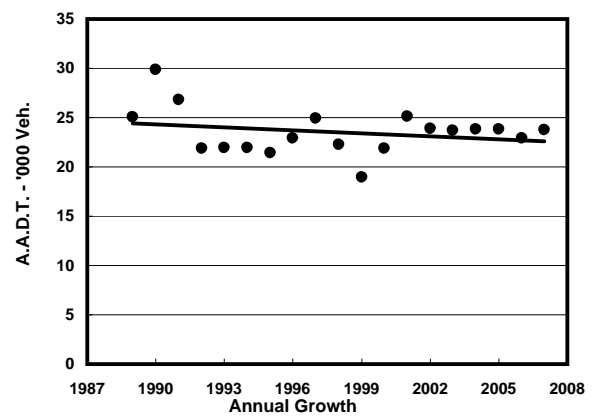
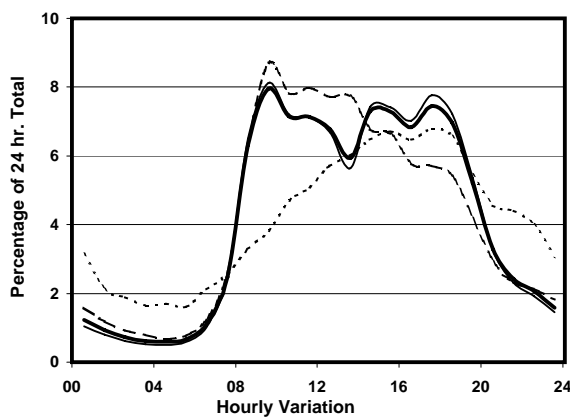
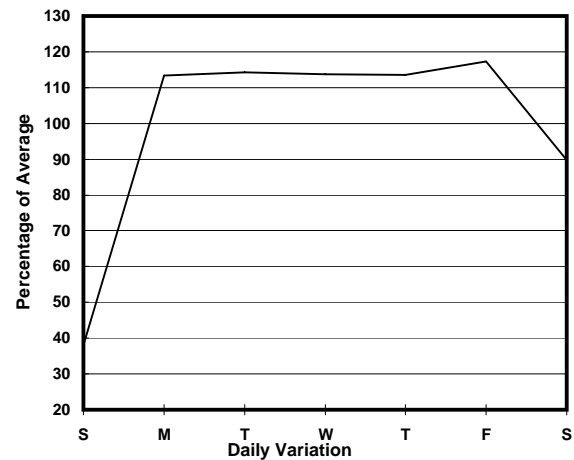
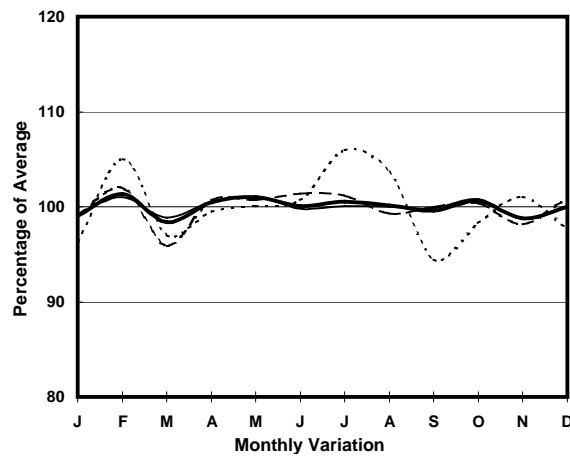
WAI YIP ST (from LAI YIP ST to HOI YUEN RD)

CORE STATION
ROAD NETWORK
ROAD TYPE

3020
MAJOR
DISTRICT DISTRIBUTOR



1. TRAFFIC FLOW VARIATION AND GROWTH



2. TRAFFIC CHARACTERISTICS (BY DIRECTION)

Parameter	All - Day	Mon. - Fri.	Sat.	Sun.
EAST BOUND				
A.A.D.T.	16410	19450	15210	6440
R 12 / 24 - %	80.7	81.8	80.1	65.7
R 16 / 24 - %	93.4	94.2	91.9	85.1
AM Peak Hour	0900-1000	0900-1000	0900-1000	0900-1000
One-way flow at AM peak hour	1420	1730	1420	260
T - % (AM)	-	-	-	-
PM Peak Hour	1700-1800	1700-1800	1700-1800	1800-1900
One-way flow at PM peak hour	1200	1470	880	450
T - % (PM)	-	-	-	-
Prop.of commercial vehicles - 16 hr.	-	-	-	-
WEST BOUND				
A.A.D.T.	7330	8670	6850	2910
R 12 / 24 - %	76.9	77.9	77.6	60.9
R 16 / 24 - %	90.6	91.7	88.7	77.4
AM Peak Hour	0900-1000	0900-1000	0900-1000	0900-1000
One-way flow at AM peak hour	470	560	500	90
T - % (AM)	-	-	-	-
PM Peak Hour	1700-1800	1700-1800	1600-1700	1700-1800
One-way flow at PM peak hour	570	710	400	210
T - % (PM)	-	-	-	-
Prop.of commercial vehicles - 16 hr.	-	-	-	-

3. OTHER INFORMATION AND COMMENT