

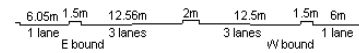
YEAR 2007

CORE STATION 3023

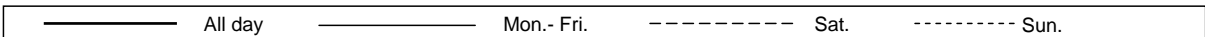
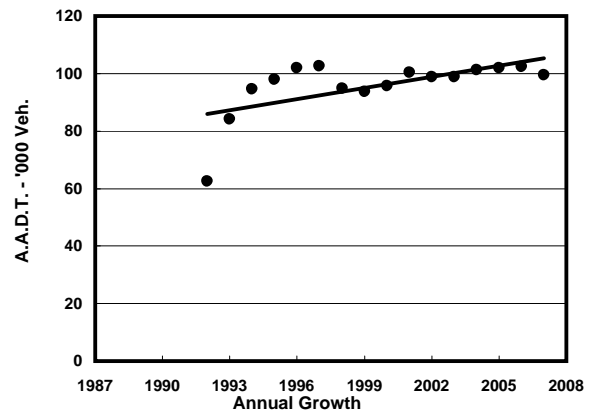
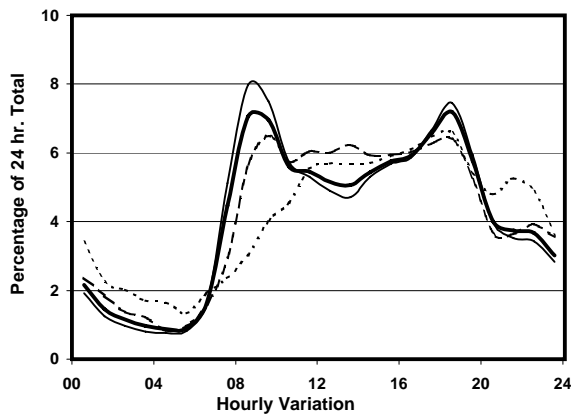
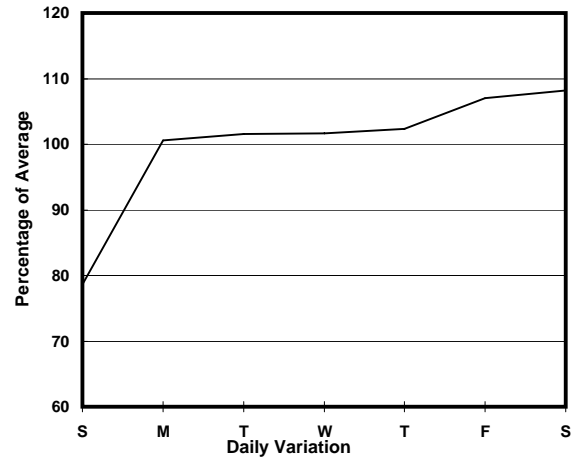
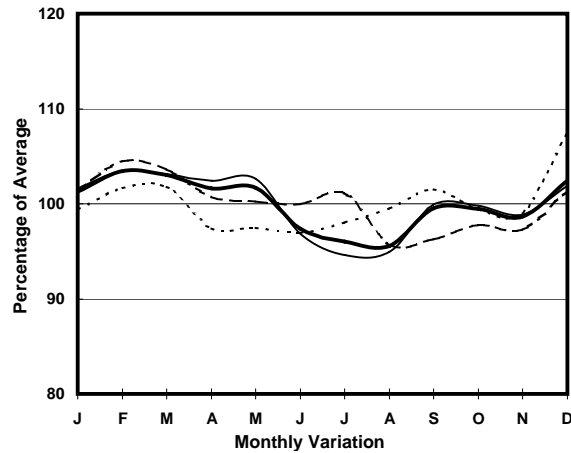
ROAD NETWORK MAJOR

ROAD TYPE EXPRESSWAY

LINK KWUN TONG BYPASS <K77> (from WAI YIP ST to CHEUNG YIP ST)



1. TRAFFIC FLOW VARIATION AND GROWTH



2. TRAFFIC CHARACTERISTICS (BY DIRECTION)

Parameter	All - Day	Mon. - Fri.	Sat.	Sun.
EAST BOUND				
A.A.D.T.	48470	50560	51950	38420
R 12 / 24 - %	68.9	70.5	67.5	59.8
R 16 / 24 - %	87.3	88.6	85.3	81.5
AM Peak Hour	0900-1000	0900-1000	0900-1000	0900-1000
One-way flow at AM peak hour	3410	3870	3300	1470
T - % (AM)	-	-	-	-
PM Peak Hour	1800-1900	1800-1900	1800-1900	1800-1900
One-way flow at PM peak hour	3520	3760	3420	2700
T - % (PM)	-	-	-	-
Prop.of commercial vehicles - 16 hr.	-	-	-	-

WEST BOUND				
A.A.D.T.	51140	52850	57010	40890
R 12 / 24 - %	72.3	73.8	71.9	63.5
R 16 / 24 - %	88.3	89.5	87.1	82.5
AM Peak Hour	0800-0900	0800-0900	0900-1000	0900-1000
One-way flow at AM peak hour	3970	4680	3780	1720
T - % (AM)	-	-	-	-
PM Peak Hour	1800-1900	1800-1900	1700-1800	1700-1800
One-way flow at PM peak hour	3650	3940	3600	2640
T - % (PM)	-	-	-	-
Prop.of commercial vehicles - 16 hr.	-	-	-	-

3. OTHER INFORMATION AND COMMENT