

YEAR

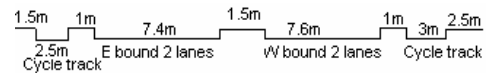
2007

LINK

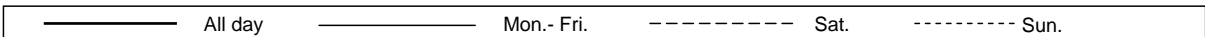
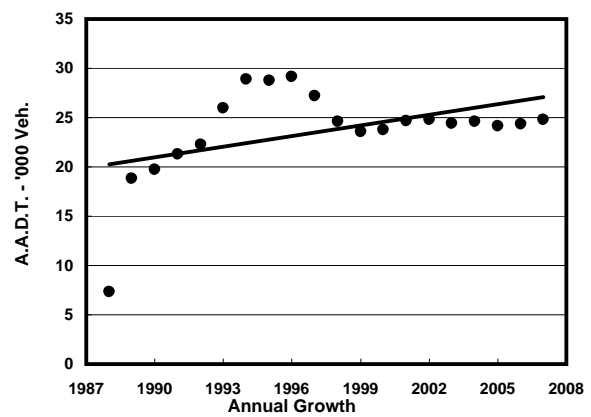
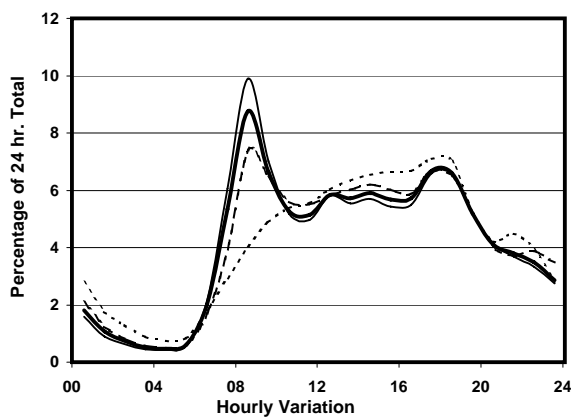
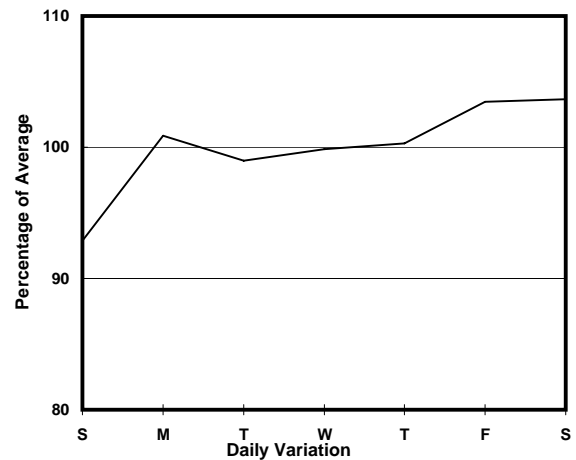
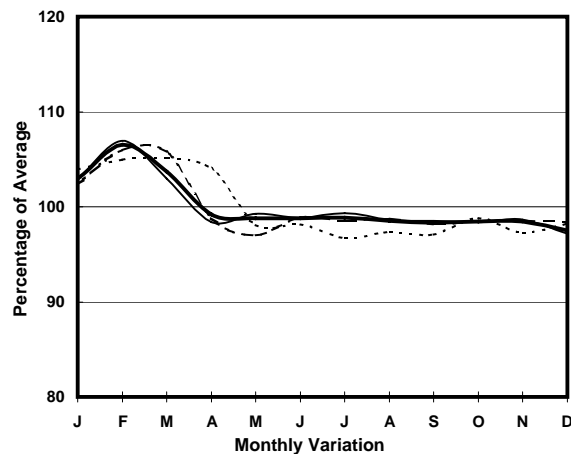
TING KOK RD (from NAM WAN RD to DAI KWAI ST)

CORE STATION
ROAD NETWORK
ROAD TYPE

5006
MAJOR
PRIMARY DISTRIBUTOR



1. TRAFFIC FLOW VARIATION AND GROWTH



2. TRAFFIC CHARACTERISTICS (BY DIRECTION)

Parameter	All - Day	Mon. - Fri.	Sat.	Sun.
EAST BOUND				
A.A.D.T.	11510	11550	12090	11040
R 12 / 24 - %	68.7	69.2	68.3	66.7
R 16 / 24 - %	89.1	89.9	88	85.8
AM Peak Hour	0800-0900	0800-0900	0800-0900	0900-1000
One-way flow at AM peak hour	930	1070	750	490
T - % (AM)	-	-	-	-
PM Peak Hour	1800-1900	1800-1900	1800-1900	1600-1700
One-way flow at PM peak hour	750	770	770	740
T - % (PM)	-	-	-	-
Prop.of commercial vehicles - 16 hr.	-	-	-	-
WEST BOUND				
A.A.D.T.	13300	13520	13710	12130
R 12 / 24 - %	77.2	78.6	75.5	71.5
R 16 / 24 - %	90.5	91.1	89.8	88.1
AM Peak Hour	0800-0900	0800-0900	0800-0900	0900-1000
One-way flow at AM peak hour	1240	1410	1160	650
T - % (AM)	-	-	-	-
PM Peak Hour	1700-1800	1700-1800	1700-1800	1800-1900
One-way flow at PM peak hour	930	920	970	980
T - % (PM)	-	-	-	-
Prop.of commercial vehicles - 16 hr.	-	-	-	-

3. OTHER INFORMATION AND COMMENT