

YEAR 2007

CORE STATION 5035

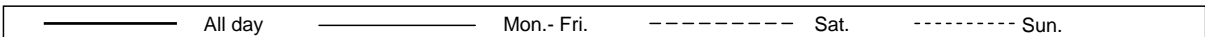
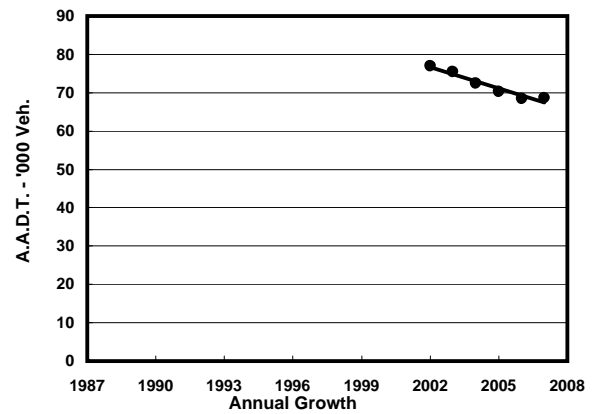
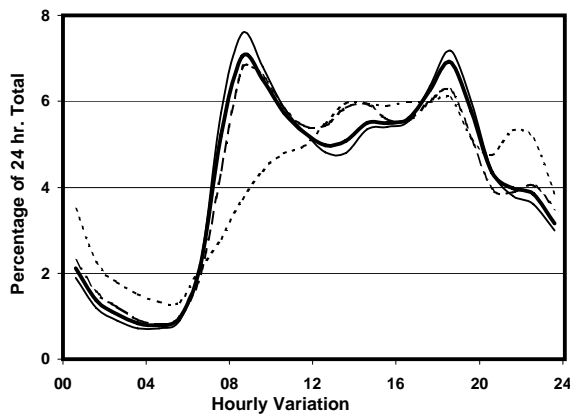
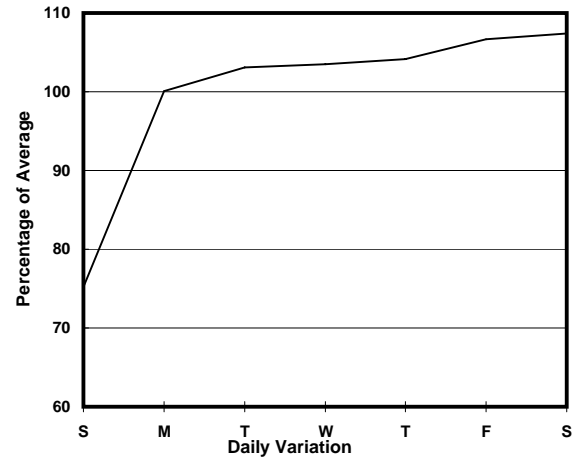
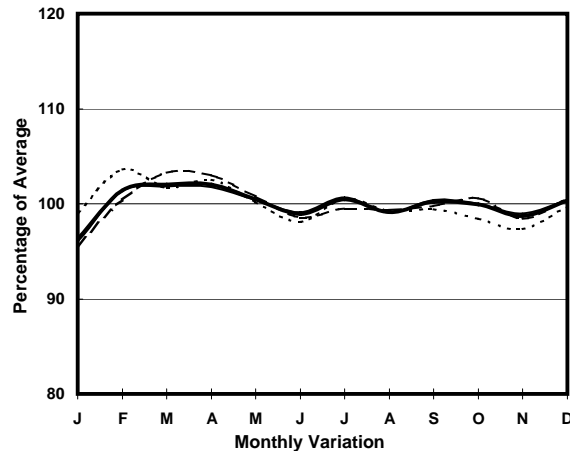
ROAD NETWORK MAJOR

ROAD TYPE EXPRESSWAY

LINK TUEN MUN RD (from CASTLE PEAK RD - TSUEN WAN to TSING LONG HIGHWAY - TING KAU BRIDGE)



1. TRAFFIC FLOW VARIATION AND GROWTH



2. TRAFFIC CHARACTERISTICS (BY DIRECTION)

Parameter	All - Day	Mon. - Fri.	Sat.	Sun.
EAST BOUND				
A.A.D.T.	33560	35330	36080	25280
R 12 / 24 - %	75	76.3	74.3	66.4
R 16 / 24 - %	88.3	89.1	87.6	83.8
AM Peak Hour	0800-0900	0800-0900	0800-0900	0900-1000
One-way flow at AM peak hour	3230	3660	3400	1330
T - % (AM)	-	-	-	-
PM Peak Hour	1700-1800	1700-1800	1800-1900	1700-1800
One-way flow at PM peak hour	1950	2070	2040	1510
T - % (PM)	-	-	-	-
Prop.of commercial vehicles - 16 hr.	-	-	-	-
WEST BOUND				
A.A.D.T.	35110	36650	38640	27220
R 12 / 24 - %	64.5	65.3	65.4	58
R 16 / 24 - %	86.8	87.9	85.9	81
AM Peak Hour	0900-1000	0900-1000	0900-1000	0900-1000
One-way flow at AM peak hour	1710	1860	1820	980
T - % (AM)	-	-	-	-
PM Peak Hour	1800-1900	1800-1900	1800-1900	1600-1700
One-way flow at PM peak hour	2810	3120	2650	1680
T - % (PM)	-	-	-	-
Prop.of commercial vehicles - 16 hr.	-	-	-	-

3. OTHER INFORMATION AND COMMENT