

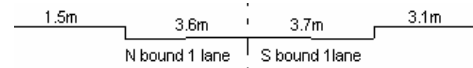
YEAR 2007

CORE STATION 5102

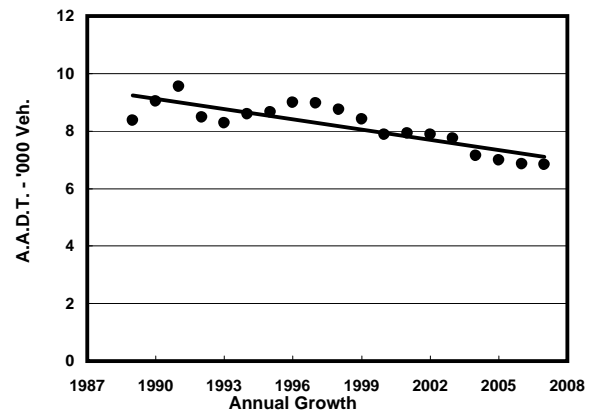
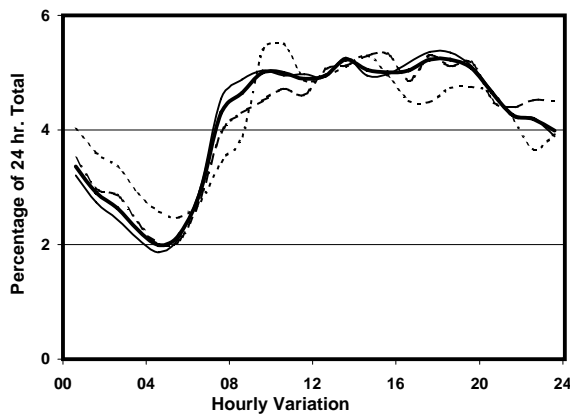
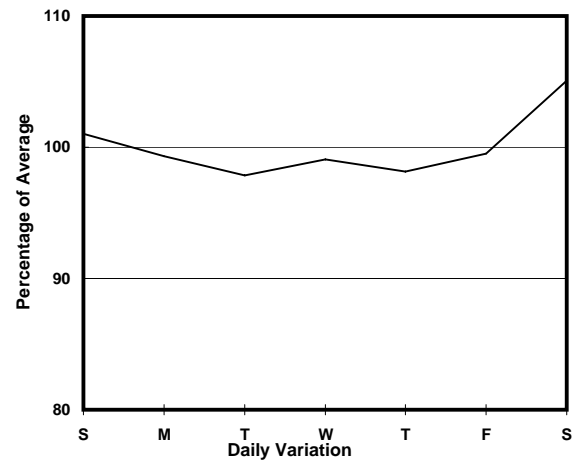
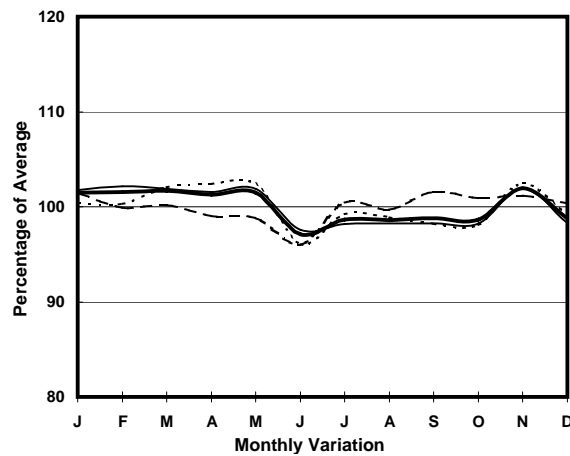
ROAD NETWORK MINOR

ROAD TYPE LOCAL DISTRIBUTOR

LINK TSENG CHOI ST (from CASTLE PEAK RD NORTHERN JUNCTION to CASTLE PEAK RD SOUTHERN JUNCTION)



## 1. TRAFFIC FLOW VARIATION AND GROWTH



— All day    — Mon.- Fri.    - - - - - Sat.    - - - - - Sun.

## 2. TRAFFIC CHARACTERISTICS (BY DIRECTION)

Parameter	All - Day	Mon. - Fri.	Sat.	Sun.
<b>SOUTH BOUND</b>				
A.A.D.T.	4110	4060	4310	4150
R 12 / 24 - %	60.2	60.9	58.8	57.6
R 16 / 24 - %	78.9	79.7	77.9	75.4
AM Peak Hour	0900-1000	0700-0800	0800-0900	0900-1000
One-way flow at AM peak hour	200	210	190	210
T - % (AM)	-	-	-	-
PM Peak Hour	1800-1900	1800-1900	1700-1800	1600-1700
One-way flow at PM peak hour	220	230	240	200
T - % (PM)	-	-	-	-
Prop.of commercial vehicles - 16 hr.	-	-	-	-
<b>NORTH BOUND</b>				
A.A.D.T.	2720	2690	2860	2750
R 12 / 24 - %	58.7	59.5	57.4	56.4
R 16 / 24 - %	76.2	77.1	75.4	72.8
AM Peak Hour	0900-1000	0900-1000	0900-1000	0900-1000
One-way flow at AM peak hour	140	140	140	160
T - % (AM)	-	-	-	-
PM Peak Hour	1700-1800	1700-1800	1700-1800	1800-1900
One-way flow at PM peak hour	140	140	150	130
T - % (PM)	-	-	-	-
Prop.of commercial vehicles - 16 hr.	-	-	-	-

## 3. OTHER INFORMATION AND COMMENT