

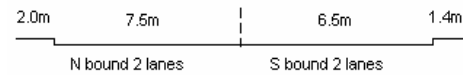
YEAR 2007

COVERAGE (B) STATION 2201

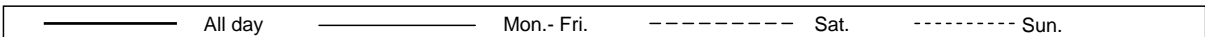
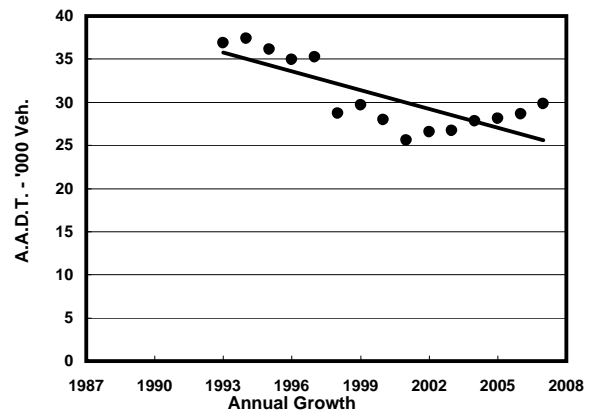
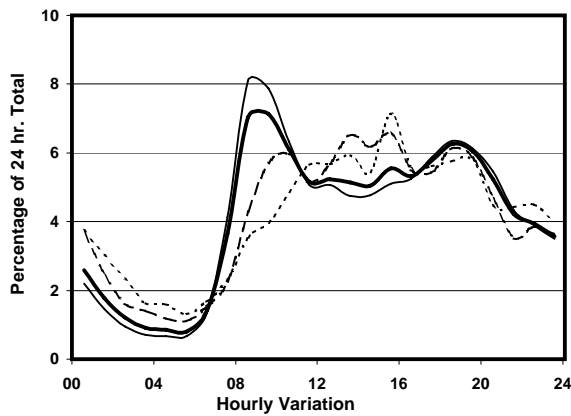
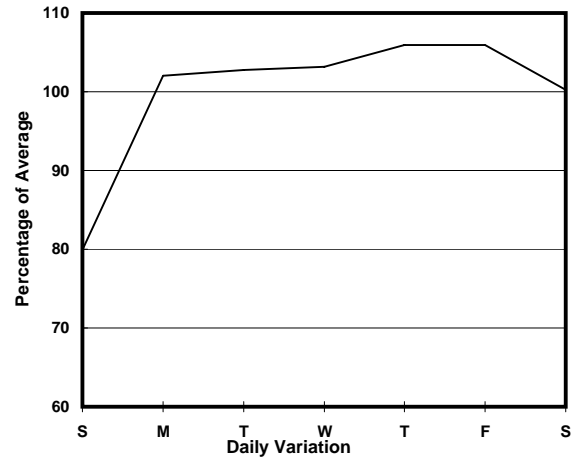
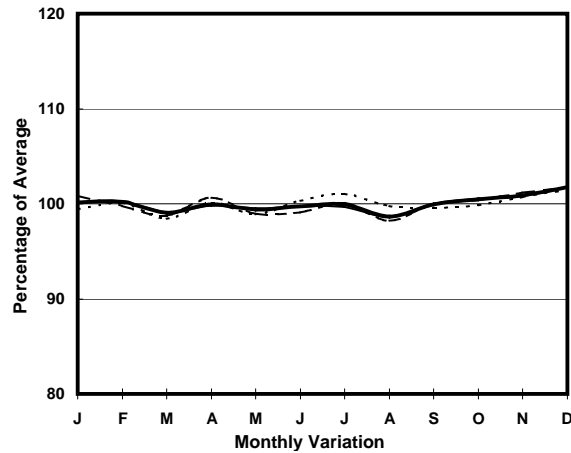
ROAD NETWORK MAJOR

ROAD TYPE PRIMARY DISTRIBUTOR

LINK POK FU LAM RD (from POKFIELD RD to MOUNT DAVIS RD)



1. TRAFFIC FLOW VARIATION AND GROWTH



2. TRAFFIC CHARACTERISTICS (BY DIRECTION)

Parameter	All - Day	Mon. - Fri.	Sat.	Sun.
SOUTH BOUND				
A.A.D.T.	10680	11120	10880	9110
R 12 / 24 - %	62.7	63.6	61.5	58.8
R 16 / 24 - %	84	85.8	80.2	77.7
AM Peak Hour	0900-1000	0900-1000	0900-1000	0800-0900
One-way flow at AM peak hour	630	740	510	310
T - % (AM)	-	9.5	-	-
PM Peak Hour	1800-1900	1800-1900	1800-1900	1700-1800
One-way flow at PM peak hour	640	690	660	580
T - % (PM)	-	10.3	-	-
Prop.of commercial vehicles - 16 hr.	-	10.5	-	-

NORTH BOUND				
A.A.D.T.	19150	20230	19350	15020
R 12 / 24 - %	70	71.5	67.6	63.1
R 16 / 24 - %	88.5	90	85.1	82.5
AM Peak Hour	0800-0900	0800-0900	0900-1000	0900-1000
One-way flow at AM peak hour	1550	1910	1220	680
T - % (AM)	-	5.8	-	-
PM Peak Hour	1800-1900	1800-1900	1800-1900	1800-1900
One-way flow at PM peak hour	1220	1300	1200	940
T - % (PM)	-	11	-	-
Prop.of commercial vehicles - 16 hr.	-	9	-	-

3. OTHER INFORMATION AND COMMENT

4. Vehicle classification and occupancy - Monday to Friday

Time		Class of vehicle									
		Motor	Private	Taxi	Private	PLB	Goods veh.		Non	Fr. Bus	
		Cycle	Car		LB		Light	M & H	Fr. Bus	SD	DD
0700-0800	Pro	3.2	18.7	39.4	3.4	15.5	5.2	0.6	7.3	0.1	6.4
	Ocp	1.1	1.7	2.1	8.1	12.9	1.5	1.7	25.7	9.5	46.7
0800-0900	Pro	1.9	41.6	32.2	1.2	11.4	5.4	0.5	1.5	0.2	4.2
	Ocp	1.1	1.5	2.0	5.2	14.3	1.4	1.8	14.5	13.2	53.0
0900-1000	Pro	1.7	39.9	30.4	1.2	12.4	6.7	0.9	1.6	0.2	4.9
	Ocp	1.1	1.5	2.0	3.4	12.5	1.6	1.3	3.9	5.0	35.9
1000-1100	Pro	1.7	32.8	30.2	1.7	12.4	11.9	1.7	1.3	0.1	6.2
	Ocp	1.0	1.3	1.9	2.8	9.4	1.8	2.3	2.7	4.0	21.2
1100-1200	Pro	1.5	26.0	29.1	3.7	13.5	16.7	0.2	3.2	0.2	6.0
	Ocp	1.0	1.5	2.3	2.6	7.7	1.6	3.0	6.6	5.0	19.5
1200-1300	Pro	2.0	33.0	30.8	1.7	10.3	8.6	1.7	4.9	0.1	6.8
	Ocp	1.0	1.6	2.2	3.9	10.1	1.6	1.7	7.9	4.5	19.2
1300-1400	Pro	2.1	24.6	33.4	1.8	14.6	12.3	1.5	2.6	0.3	6.9
	Ocp	1.1	1.5	1.9	2.7	10.1	1.7	2.2	1.2	6.5	23.7
1400-1500	Pro	2.3	27.9	30.1	1.3	14.1	15.3	0.8	1.0	0.1	7.2
	Ocp	1.1	1.4	1.9	1.6	9.1	1.9	2.0	10.0	1.5	15.9
1500-1600	Pro	1.7	25.3	31.5	3.0	11.0	13.4	1.7	6.0	0.2	6.1
	Ocp	1.0	1.4	2.0	7.6	9.4	1.8	2.1	22.5	4.5	23.7
1600-1700	Pro	3.4	24.6	32.6	1.0	13.3	10.6	1.2	5.8	0.1	7.4
	Ocp	1.1	1.5	1.9	1.3	13.4	1.9	1.8	4.9	5.0	27.0
1700-1800	Pro	3.4	33.5	30.0	1.8	13.2	8.5	0.7	2.0	0.2	6.8
	Ocp	1.0	1.5	2.2	3.1	13.4	1.7	2.0	13.1	14.3	37.8
1800-1900	Pro	3.6	45.0	23.9	0.2	11.6	4.9	0.8	4.5	0.1	5.4
	Ocp	1.1	1.6	2.3	1.0	13.8	1.8	2.0	27.1	16.5	48.6
1900-2000	Pro	2.1	35.6	40.2	0.4	12.5	2.9	0.0	0.4	0.1	5.9
	Ocp	1.0	1.4	1.9	1.0	13.4	1.8	0.0	40.0	9.0	37.1
2000-2100	Pro	2.4	26.4	49.8	0.2	12.2	3.0	0.2	0.0	0.2	5.7
	Ocp	1.1	1.7	1.7	1.0	8.6	1.5	1.0	0.0	4.0	22.9
2100-2200	Pro	2.1	25.3	49.9	0.3	12.8	1.8	0.3	0.3	0.1	7.1
	Ocp	1.1	1.5	1.8	4.0	10.6	1.7	1.0	1.0	9.0	22.0
2200-2300	Pro	1.2	23.9	55.3	0.3	9.3	2.7	0.3	0.0	0.2	6.8
	Ocp	1.3	1.8	1.7	1.0	8.6	1.1	2.0	0.0	4.0	17.8
16 hours	Pro	2.3	31.4	35.0	1.4	12.5	7.9	0.8	2.6	0.2	6.1
	Ocp	1.1	1.5	2.0	4.3	11.4	1.7	1.9	15.2	7.7	30.2

Legend

- Pro.** Proportion of vehicles in % (Sum may not add up to 100% due to figure rounding)
- Ocp.** Average occupancy of vehicles
- M&H** Medium and Heavy