

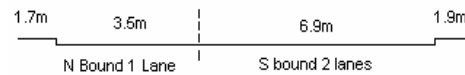
YEAR 2007

COVERAGE (B) STATION 2202

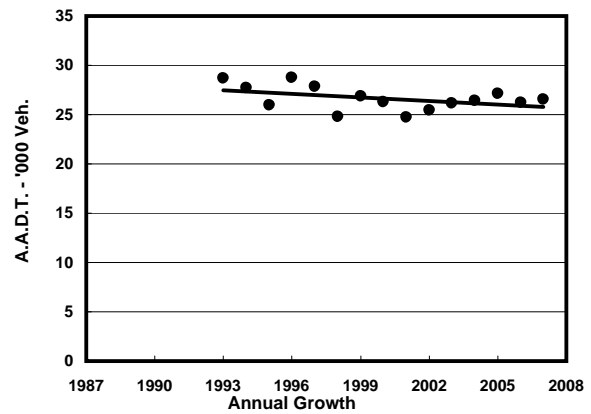
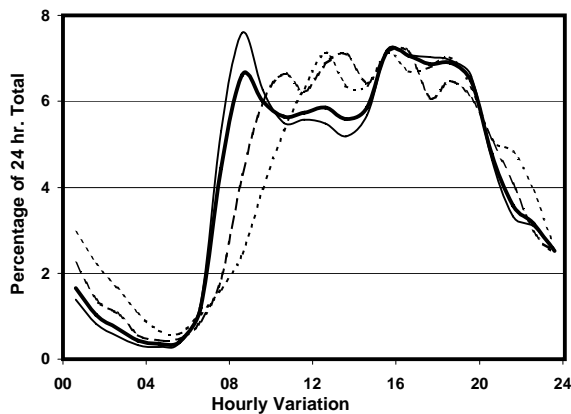
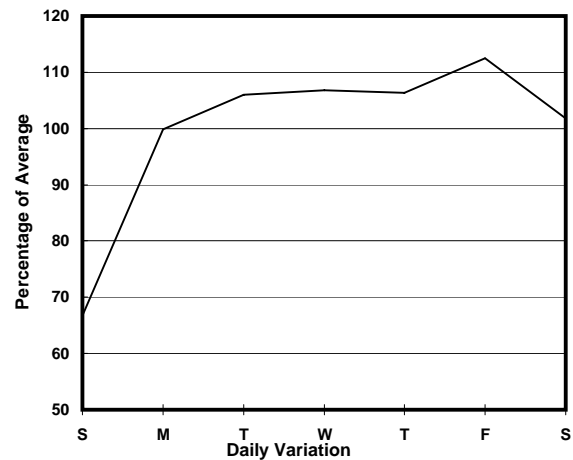
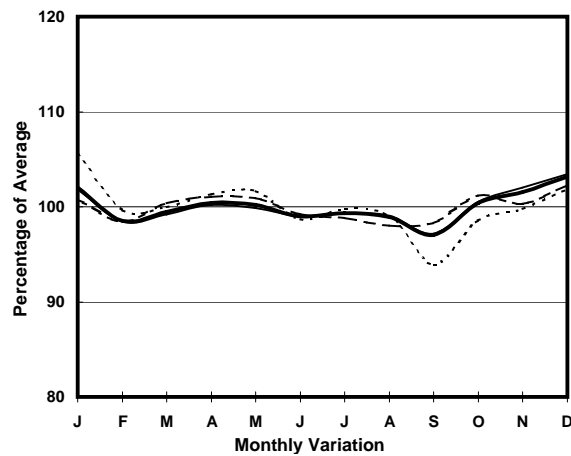
ROAD NETWORK MAJOR

ROAD TYPE DISTRICT DISTRIBUTOR

LINK WONG NAI CHUNG GAP RD (from STUBBS RD FO  
<H119> SOUTHERN END to REPULSE BAY RD)



### 1. TRAFFIC FLOW VARIATION AND GROWTH



— All day    — Mon.- Fri.    - - - - - Sat.    - - - - - Sun.

### 2. TRAFFIC CHARACTERISTICS (BY DIRECTION)

Parameter	All - Day	Mon. - Fri.	Sat.	Sun.
<b>SOUTH BOUND</b>				
A.A.D.T.	12050	13050	12140	8470
R 12 / 24 - %	74.7	75.3	74.6	70.2
R 16 / 24 - %	92.4	92.9	91.6	89.6
AM Peak Hour	0800-0900	0800-0900	0900-1000	0900-1000
One-way flow at AM peak hour	710	840	750	360
T - % (AM)	-	9.9	-	-
PM Peak Hour	1600-1700	1600-1700	1600-1700	1600-1700
One-way flow at PM peak hour	880	950	870	630
T - % (PM)	-	5.7	-	-
Prop.of commercial vehicles - 16 hr.	-	6	-	-
<b>NORTH BOUND</b>				
A.A.D.T.	14480	15670	15340	9570
R 12 / 24 - %	72.9	74.5	70.4	64.5
R 16 / 24 - %	91.1	92.2	89.6	85.3
AM Peak Hour	0800-0900	0800-0900	0900-1000	0900-1000
One-way flow at AM peak hour	1050	1340	890	350
T - % (AM)	-	9.2	-	-
PM Peak Hour	1800-1900	1700-1800	1600-1700	1800-1900
One-way flow at PM peak hour	1040	1140	1090	700
T - % (PM)	-	4.7	-	-
Prop.of commercial vehicles - 16 hr.	-	6.5	-	-

### 3. OTHER INFORMATION AND COMMENT

**4. Vehicle classification and occupancy - Monday to Friday**

Time		Class of vehicle									
		Motor	Private	Taxi	Private	PLB	Goods veh.		Non	Fr. Bus	
		Cycle	Car		LB		Light	M & H	Fr. Bus	SD	DD
0700-0800	Pro	4.7	41.3	31.5	6.4	1.3	2.7	0.3	9.1	1.2	1.5
	Ocp	1.0	1.6	1.6	6.2	9.5	1.4	1.0	15.7	21.9	31.1
0800-0900	Pro	2.5	63.5	16.2	2.2	1.3	4.8	1.2	7.2	0.5	0.7
	Ocp	1.1	1.3	1.8	5.7	8.1	1.8	1.6	11.5	18.8	29.1
0900-1000	Pro	4.6	62.1	19.2	0.9	1.6	7.1	1.8	1.1	0.6	0.9
	Ocp	1.1	1.3	1.8	5.5	13.7	1.3	1.1	6.0	13.2	25.8
1000-1100	Pro	4.7	50.4	25.3	0.7	0.7	11.4	2.6	2.1	0.8	1.2
	Ocp	1.0	1.3	1.4	1.3	8.7	1.7	1.4	5.7	9.3	14.4
1100-1200	Pro	3.1	51.7	22.3	3.1	0.6	11.7	2.3	3.4	0.7	1.1
	Ocp	1.1	1.3	1.6	1.5	7.0	1.8	1.5	12.3	10.4	18.9
1200-1300	Pro	2.9	51.8	18.3	4.0	0.8	14.1	1.1	5.3	0.7	1.0
	Ocp	1.2	1.4	1.7	4.3	4.7	1.6	2.0	10.7	9.3	19.8
1300-1400	Pro	3.7	50.5	27.5	2.4	1.5	8.3	0.9	3.1	1.0	1.1
	Ocp	1.2	1.5	1.6	3.0	7.4	1.4	1.0	15.3	9.9	21.6
1400-1500	Pro	3.7	51.3	27.9	1.4	1.1	10.0	0.6	2.0	0.8	1.1
	Ocp	1.2	1.4	1.5	1.8	8.3	2.0	1.0	6.9	10.4	25.8
1500-1600	Pro	2.0	48.1	31.1	3.4	0.6	6.1	1.2	6.1	0.6	0.8
	Ocp	1.1	1.5	1.7	6.5	9.3	1.6	1.3	8.8	16.3	24.4
1600-1700	Pro	2.6	51.4	27.4	1.9	0.9	9.1	0.6	4.7	0.5	0.9
	Ocp	1.2	1.5	1.8	2.7	8.5	2.2	1.3	14.3	13.7	20.6
1700-1800	Pro	2.8	55.2	29.7	1.6	1.0	6.0	0.4	2.0	0.5	0.9
	Ocp	1.1	1.4	1.9	3.6	9.0	1.9	1.0	16.2	16.2	34.7
1800-1900	Pro	5.1	58.4	25.0	1.0	0.4	4.5	0.2	3.9	0.5	0.9
	Ocp	1.1	1.5	1.8	3.6	17.0	1.6	1.0	23.3	25.0	39.3
1900-2000	Pro	3.0	62.7	28.4	0.0	0.4	1.7	0.6	1.7	0.5	0.9
	Ocp	1.1	1.5	1.7	0.0	11.0	1.9	1.0	21.4	12.0	24.4
2000-2100	Pro	1.9	51.2	40.8	0.0	0.8	0.8	0.0	3.0	0.4	1.0
	Ocp	1.0	1.6	1.5	0.0	2.3	1.0	0.0	20.5	7.8	14.9
2100-2200	Pro	3.4	46.2	46.2	0.0	0.7	1.1	0.0	0.7	0.4	1.2
	Ocp	1.0	1.6	1.9	0.0	5.5	2.0	0.0	19.5	4.0	12.4
2200-2300	Pro	2.2	38.1	55.0	0.0	1.1	0.5	0.0	0.5	0.7	1.9
	Ocp	1.3	1.7	1.6	0.0	5.5	1.0	0.0	4.0	6.2	12.3
16 hours	Pro	3.3	53.5	27.8	1.8	0.9	6.4	0.9	3.7	0.6	1.0
	Ocp	1.1	1.4	1.7	4.4	8.7	1.7	1.3	13.5	13.6	23.6

**Legend**

- Pro.** Proportion of vehicles in % (Sum may not add up to 100% due to figure rounding)
- Ocp.** Average occupancy of vehicles
- M&H** Medium and Heavy