

YEAR 2007

COVERAGE (B) STATION 2203

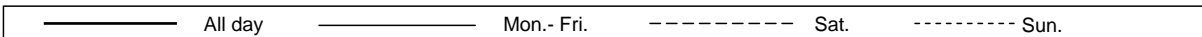
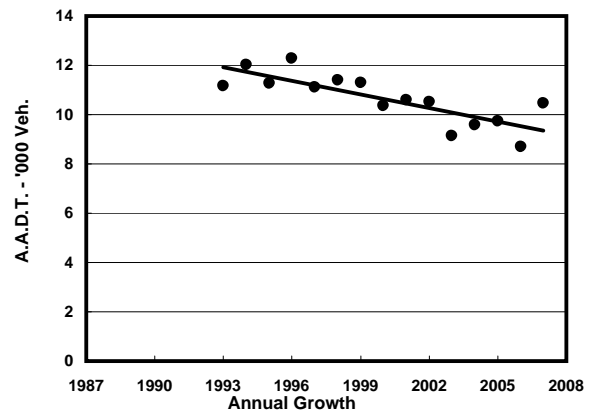
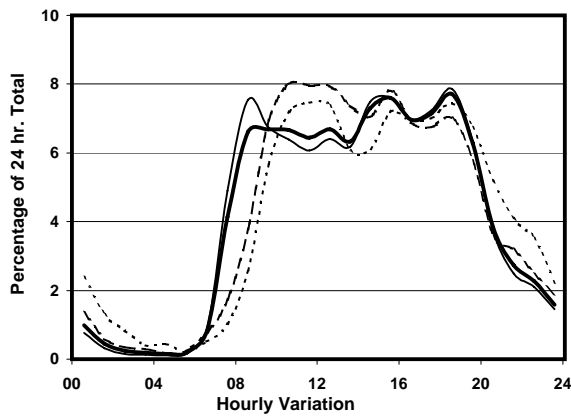
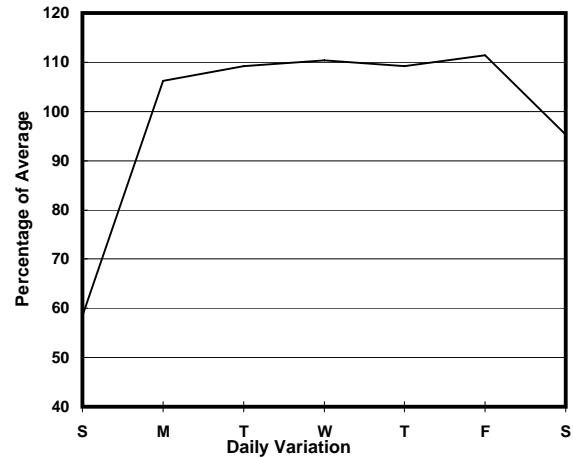
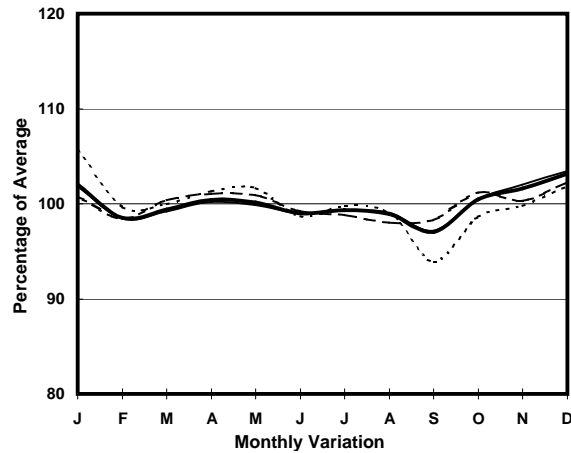
ROAD NETWORK MAJOR

ROAD TYPE DISTRICT DISTRIBUTOR

LINK STUBBS RD (from WAN CHAI GAP to WONG NAI CHUNG GAP RD)



1. TRAFFIC FLOW VARIATION AND GROWTH



2. TRAFFIC CHARACTERISTICS (BY DIRECTION)

Parameter	All - Day	Mon. - Fri.	Sat.	Sun.
SOUTH BOUND				
A.A.D.T.	5460	6100	5310	3320
R 12 / 24 - %	79.4	80	79.4	73
R 16 / 24 - %	95.5	96.2	94.3	91.7
AM Peak Hour	0800-0900	0800-0900	0900-1000	0900-1000
One-way flow at AM peak hour	320	400	350	150
T - % (AM)	-	10	-	-
PM Peak Hour	1800-1900	1800-1900	1600-1700	1800-1900
One-way flow at PM peak hour	430	490	360	250
T - % (PM)	-	14.1	-	-
Prop.of commercial vehicles - 16 hr.	-	11.4	-	-
NORTH BOUND				
A.A.D.T.	5020	5610	4890	2940
R 12 / 24 - %	81.3	82.8	79.1	71.1
R 16 / 24 - %	95.3	95.9	94.3	91.7
AM Peak Hour	0900-1000	0800-0900	0900-1000	0900-1000
One-way flow at AM peak hour	390	490	360	200
T - % (AM)	-	12.1	-	-
PM Peak Hour	1800-1900	1800-1900	1800-1900	1800-1900
One-way flow at PM peak hour	380	430	360	220
T - % (PM)	-	19.6	-	-
Prop.of commercial vehicles - 16 hr.	-	12.4	-	-

3. OTHER INFORMATION AND COMMENT

4. Vehicle classification and occupancy - Monday to Friday

Time		Class of vehicle									
		Motor	Private	Taxi	Private	PLB	Goods veh.		Non	Fr. Bus	
		Cycle	Car		LB		Light	M & H	Fr. Bus	SD	DD
0700-0800	Pro	2.7	60.4	23.4	1.8	0.0	2.7	1.8	5.4	0.0	1.8
	Ocp	1.0	2.3	1.8	4.5	0.0	2.0	1.0	3.2	0.0	36.1
0800-0900	Pro	1.2	65.8	15.1	1.6	0.0	5.2	1.2	9.1	0.0	0.9
	Ocp	1.0	1.8	1.6	6.0	0.0	2.8	2.0	10.7	0.0	31.0
0900-1000	Pro	0.9	56.2	21.6	1.8	0.0	9.9	1.8	6.8	0.0	1.0
	Ocp	1.0	1.6	1.4	1.3	0.0	1.8	1.0	9.8	0.0	25.4
1000-1100	Pro	1.6	47.5	21.2	0.0	0.0	12.9	4.7	10.9	0.0	1.3
	Ocp	1.0	1.6	1.3	0.0	0.0	1.5	1.4	14.3	0.0	11.3
1100-1200	Pro	0.6	43.3	20.5	2.3	0.0	19.9	2.9	9.1	0.0	1.4
	Ocp	1.0	1.6	1.6	1.3	0.0	1.7	1.6	16.4	0.0	15.2
1200-1300	Pro	4.5	48.8	13.1	2.3	0.0	19.3	3.4	7.4	0.0	1.3
	Ocp	1.3	1.5	2.1	2.0	0.0	1.7	2.2	13.7	0.0	21.6
1300-1400	Pro	0.5	41.1	31.2	0.5	0.0	13.7	4.4	7.1	0.0	1.4
	Ocp	1.0	1.4	1.4	3.0	0.0	1.8	1.4	20.1	0.0	22.6
1400-1500	Pro	2.4	45.2	24.1	1.2	0.0	18.8	1.8	5.3	0.0	1.3
	Ocp	1.0	1.5	1.7	6.5	0.0	1.8	1.7	23.3	0.0	18.4
1500-1600	Pro	2.0	57.9	21.9	1.2	0.0	10.2	2.0	3.9	0.0	1.0
	Ocp	1.2	1.9	1.7	3.0	0.0	2.0	1.2	9.1	0.0	21.2
1600-1700	Pro	0.5	45.6	32.9	0.9	0.0	11.8	2.8	4.7	0.0	0.8
	Ocp	1.0	1.8	1.8	3.0	0.0	2.1	1.7	21.6	0.0	36.1
1700-1800	Pro	3.9	53.3	23.2	1.0	0.0	10.7	1.5	5.3	0.0	1.2
	Ocp	1.8	1.7	1.8	1.0	0.0	2.9	1.3	19.2	0.0	37.1
1800-1900 Peak hour	Pro	1.3	59.2	17.2	0.0	0.0	5.5	0.0	16.0	0.0	0.8
	Ocp	1.3	1.8	2.1	0.0	0.0	1.5	0.0	22.9	0.0	42.9
1900-2000	Pro	1.5	60.4	22.8	0.0	0.0	1.5	0.5	12.2	0.0	1.0
	Ocp	1.3	1.6	2.0	0.0	0.0	1.7	1.0	18.3	0.0	27.8
2000-2100	Pro	0.0	52.8	25.4	0.0	0.0	2.0	0.0	17.3	0.0	2.5
	Ocp	0.0	1.5	1.6	0.0	0.0	1.5	0.0	16.4	0.0	22.9
2100-2200	Pro	1.4	48.8	31.2	0.0	0.0	1.4	0.0	14.9	0.0	2.4
	Ocp	2.0	1.7	2.2	0.0	0.0	1.0	0.0	17.2	0.0	14.3
2200-2300	Pro	0.0	57.4	18.5	0.0	0.0	5.6	0.0	14.8	0.0	3.7
	Ocp	0.0	1.8	1.7	0.0	0.0	1.3	0.0	12.5	0.0	17.0
16 hours	Pro	1.6	53.1	22.3	1.0	0.0	10.1	2.0	8.7	0.0	1.3
	Ocp	1.3	1.7	1.7	3.0	0.0	1.9	1.5	16.4	0.0	24.7

Legend

- Pro.** Proportion of vehicles in % (Sum may not add up to 100% due to figure rounding)
- Ocp.** Average occupancy of vehicles
- M&H** Medium and Heavy