

YEAR

2007

LINK

MAGAZINE GAP RD (from GARDEN RD to PEAK RD)

COVERAGE (B) STATION

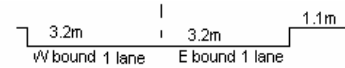
2205

ROAD NETWORK

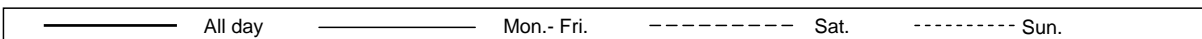
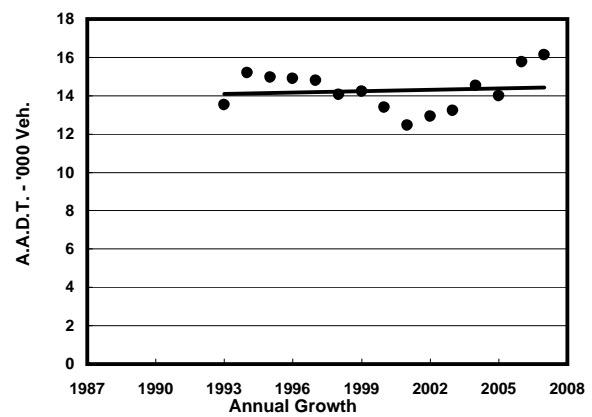
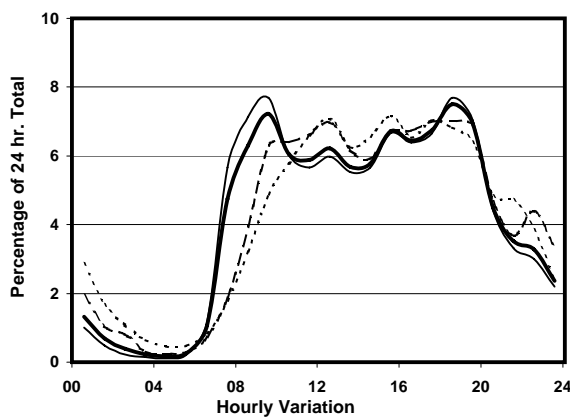
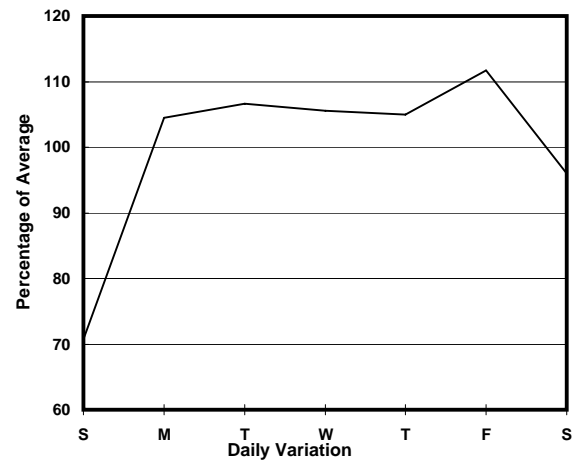
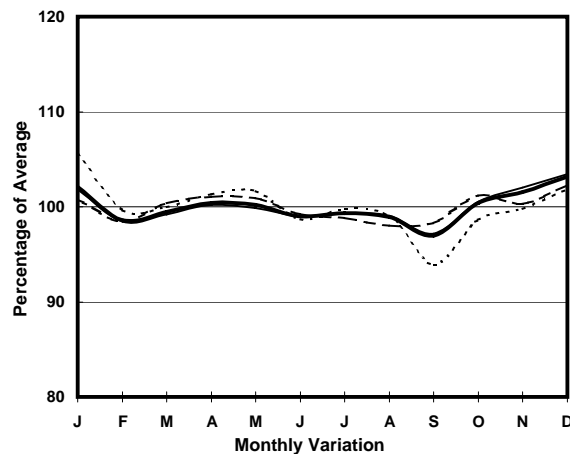
MAJOR

ROAD TYPE

DISTRICT DISTRIBUTOR



1. TRAFFIC FLOW VARIATION AND GROWTH



2. TRAFFIC CHARACTERISTICS (BY DIRECTION)

Parameter	All - Day	Mon. - Fri.	Sat.	Sun.
EAST BOUND				
A.A.D.T.	8340	8990	8270	6100
R 12 / 24 - %	73	73.9	71.1	69
R 16 / 24 - %	92.8	93.7	90.7	89
AM Peak Hour	0900-1000	0900-1000	0900-1000	0900-1000
One-way flow at AM peak hour	540	610	500	300
T - % (AM)	-	1.4	-	-
PM Peak Hour	1800-1900	1800-1900	1700-1800	1700-1800
One-way flow at PM peak hour	660	750	600	390
T - % (PM)	-	0.6	-	-
Prop.of commercial vehicles - 16 hr.	-	1.5	-	-

WEST BOUND				
A.A.D.T.	7800	8500	7470	5510
R 12 / 24 - %	77.7	79.6	72.2	70.6
R 16 / 24 - %	94.3	95.3	91.9	90.1
AM Peak Hour	0900-1000	0900-1000	0900-1000	0900-1000
One-way flow at AM peak hour	620	730	490	270
T - % (AM)	-	0.6	-	-
PM Peak Hour	1800-1900	1800-1900	1800-1900	1700-1800
One-way flow at PM peak hour	550	600	540	430
T - % (PM)	-	1.4	-	-
Prop.of commercial vehicles - 16 hr.	-	2.7	-	-

3. OTHER INFORMATION AND COMMENT

4. Vehicle classification and occupancy - Monday to Friday

Time		Class of vehicle									
		Motor	Private	Taxi	Private	PLB	Goods veh.		Non	Fr. Bus	
		Cycle	Car		LB		Light	M & H	Fr. Bus	SD	DD
0700-0800	Pro	3.0	49.0	34.0	2.0	4.5	1.0	0.0	6.5	0.0	0.0
	Ocp	1.0	1.9	1.6	3.3	12.1	2.0	0.0	9.2	0.0	0.0
0800-0900	Pro	1.2	58.4	27.1	2.0	4.7	2.0	0.0	4.7	0.0	0.0
	Ocp	1.3	1.6	2.3	6.2	11.2	2.6	0.0	9.9	0.0	0.0
0900-1000 Peak hour	Pro	1.0	64.2	26.2	0.0	2.0	5.6	0.3	0.7	0.0	0.0
	Ocp	1.3	1.6	2.0	0.0	12.2	1.9	2.0	3.0	0.0	0.0
1000-1100	Pro	2.4	58.8	27.1	0.4	2.0	7.8	0.8	0.8	0.0	0.0
	Ocp	1.2	1.5	2.0	2.0	7.2	1.9	1.5	1.5	0.0	0.0
1100-1200	Pro	2.7	58.8	21.4	1.9	1.9	11.7	0.4	1.2	0.0	0.0
	Ocp	1.3	1.6	1.8	3.8	8.6	1.9	3.0	2.3	0.0	0.0
1200-1300	Pro	0.0	61.1	25.5	2.2	1.5	8.7	0.0	1.1	0.0	0.0
	Ocp	0.0	1.7	2.0	6.2	11.8	1.6	0.0	11.3	0.0	0.0
1300-1400	Pro	1.2	54.1	30.2	0.4	2.1	9.9	0.0	2.1	0.0	0.0
	Ocp	1.0	1.5	1.9	6.0	12.2	2.1	0.0	11.8	0.0	0.0
1400-1500	Pro	0.5	52.5	34.1	0.5	2.8	6.9	0.5	2.3	0.0	0.0
	Ocp	1.0	1.7	2.1	1.0	9.8	1.7	3.0	7.2	0.0	0.0
1500-1600	Pro	1.4	50.5	33.8	1.7	1.7	7.9	0.0	3.1	0.0	0.0
	Ocp	1.0	1.7	2.0	10.0	11.4	1.6	0.0	13.8	0.0	0.0
1600-1700	Pro	2.3	55.3	27.4	1.1	3.4	7.5	0.0	3.0	0.0	0.0
	Ocp	1.0	1.8	2.1	4.3	10.4	2.1	0.0	7.9	0.0	0.0
1700-1800	Pro	1.4	51.2	37.5	0.0	3.2	4.2	0.0	2.5	0.0	0.0
	Ocp	1.3	1.9	2.5	0.0	9.0	2.5	0.0	14.9	0.0	0.0
1800-1900	Pro	0.6	59.7	34.0	0.3	1.9	2.5	0.0	1.0	0.0	0.0
	Ocp	1.0	1.7	2.4	2.0	16.5	1.5	0.0	15.7	0.0	0.0
1900-2000	Pro	1.7	60.3	34.0	0.0	1.3	1.7	0.0	1.0	0.0	0.0
	Ocp	1.0	1.5	1.9	0.0	16.5	1.8	0.0	9.7	0.0	0.0
2000-2100	Pro	0.0	54.5	42.1	0.0	2.8	0.0	0.0	0.6	0.0	0.0
	Ocp	0.0	1.5	2.1	0.0	13.0	0.0	0.0	2.0	0.0	0.0
2100-2200	Pro	0.7	51.1	45.4	0.0	1.4	1.4	0.0	0.0	0.0	0.0
	Ocp	1.0	1.7	2.3	0.0	9.5	2.0	0.0	0.0	0.0	0.0
2200-2300	Pro	0.0	53.3	44.7	0.0	2.0	0.0	0.0	0.0	0.0	0.0
	Ocp	0.0	1.5	2.2	0.0	8.7	0.0	0.0	0.0	0.0	0.0
16 hours	Pro	1.3	56.3	31.8	0.8	2.4	5.3	0.1	1.9	0.0	0.0
	Ocp	1.1	1.6	2.1	5.4	11.3	1.9	2.2	9.9	0.0	0.0

Legend

- Pro.** Proportion of vehicles in % (Sum may not add up to 100% due to figure rounding)
- Ocp.** Average occupancy of vehicles
- M&H** Medium and Heavy