

YEAR 2007

COVERAGE (B) STATION 2206

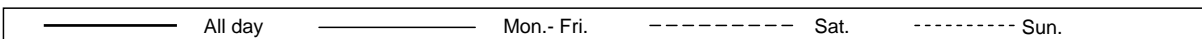
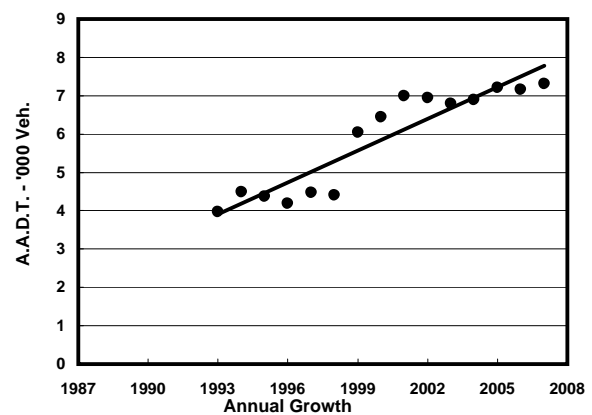
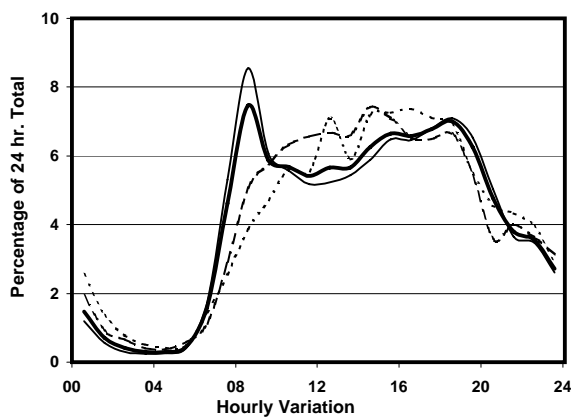
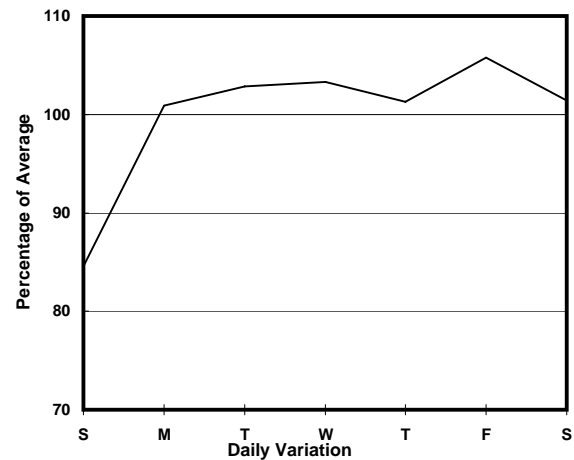
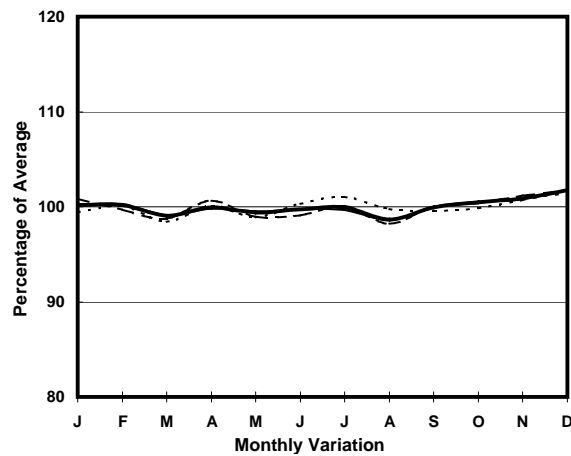
ROAD NETWORK MAJOR

ROAD TYPE DISTRICT DISTRIBUTOR

LINK BELCHER'S ST & VICTORIA RD (from SMITHFIELD RD to MOUNT DAVIS RD)



1. TRAFFIC FLOW VARIATION AND GROWTH



2. TRAFFIC CHARACTERISTICS (BY DIRECTION)

Parameter	All - Day	Mon. - Fri.	Sat.	Sun.
EAST BOUND				
A.A.D.T.	3380	3520	3480	2800
R 12 / 24 - %	75.7	76.4	74.8	73
R 16 / 24 - %	92.5	93.1	91.3	90.4
AM Peak Hour	0800-0900	0800-0900	0900-1000	0900-1000
One-way flow at AM peak hour	300	360	220	150
T - % (AM)	-	12.5	-	-
PM Peak Hour	1800-1900	1800-1900	1800-1900	1800-1900
One-way flow at PM peak hour	250	260	240	220
T - % (PM)	-	18.7	-	-
Prop.of commercial vehicles - 16 hr.	-	12.5	-	-
WEST BOUND				
A.A.D.T.	3940	4070	4000	3440
R 12 / 24 - %	71.9	71.9	73.7	69.7
R 16 / 24 - %	91.7	92.4	90.4	88.9
AM Peak Hour	0800-0900	0800-0900	0900-1000	0900-1000
One-way flow at AM peak hour	250	280	210	140
T - % (AM)	-	13.8	-	-
PM Peak Hour	1800-1900	1800-1900	1700-1800	1600-1700
One-way flow at PM peak hour	270	280	280	280
T - % (PM)	-	13.3	-	-
Prop.of commercial vehicles - 16 hr.	-	12.2	-	-

3. OTHER INFORMATION AND COMMENT

4. Vehicle classification and occupancy - Monday to Friday

Time		Class of vehicle									
		Motor	Private	Taxi	Private	PLB	Goods veh.		Non	Fr. Bus	
		Cycle	Car		LB		Light	M & H	Fr. Bus	SD	DD
0700-0800	Pro	1.9	23.2	38.1	0.0	15.8	6.5	0.0	7.4	3.2	3.9
	Ocp	1.0	1.4	2.2	0.0	11.6	1.3	0.0	20.1	24.2	13.8
0800-0900 Peak hour	Pro	4.0	41.2	13.5	6.8	10.7	10.7	2.3	6.8	2.0	2.1
	Ocp	1.0	1.4	2.0	4.8	13.4	1.8	1.5	18.8	16.6	11.1
0900-1000	Pro	3.9	45.7	13.5	0.6	7.7	19.3	3.2	1.3	2.3	2.6
	Ocp	1.0	1.4	1.9	3.0	11.9	2.0	1.4	19.5	14.7	9.1
1000-1100	Pro	1.6	37.9	12.3	2.5	10.7	26.3	1.6	0.8	3.3	2.9
	Ocp	1.0	1.4	1.7	2.3	10.2	1.6	2.5	1.0	9.8	7.9
1100-1200	Pro	4.9	25.4	10.7	4.9	9.8	36.9	1.6	0.8	2.3	2.7
	Ocp	1.2	1.4	2.0	4.8	10.6	1.7	1.0	3.0	11.8	5.7
1200-1300	Pro	2.5	31.2	12.7	2.5	12.7	26.2	3.4	3.4	2.7	2.7
	Ocp	1.0	1.8	1.7	7.0	9.7	1.7	1.5	14.0	10.3	6.4
1300-1400	Pro	2.7	27.3	11.8	1.8	18.2	21.9	7.3	3.6	2.1	3.2
	Ocp	1.0	2.0	1.5	4.5	11.0	1.6	1.5	3.3	15.1	6.7
1400-1500	Pro	7.9	34.9	14.0	0.9	10.5	18.3	5.2	3.5	2.4	2.4
	Ocp	1.0	1.5	1.7	1.0	12.3	1.9	1.8	1.3	9.8	6.4
1500-1600	Pro	2.1	32.7	23.5	4.3	10.0	15.7	2.8	4.3	1.6	3.0
	Ocp	1.3	1.5	2.3	3.2	9.6	1.5	1.3	4.0	12.1	5.0
1600-1700	Pro	5.3	31.8	13.9	6.6	10.6	21.2	3.3	2.7	2.3	2.2
	Ocp	1.1	1.8	2.0	3.2	12.7	2.0	2.6	8.0	20.2	5.5
1700-1800	Pro	2.8	34.0	22.7	5.0	9.9	12.8	3.5	3.5	2.3	3.4
	Ocp	1.3	1.6	1.8	2.0	13.1	1.8	3.0	12.8	21.2	5.3
1800-1900	Pro	1.5	46.3	12.1	0.8	12.1	11.4	3.8	6.8	2.5	2.7
	Ocp	1.0	1.7	1.9	1.0	12.3	1.6	1.0	16.0	17.7	14.0
1900-2000	Pro	2.7	44.5	18.7	0.9	8.9	6.2	4.5	5.3	3.8	4.5
	Ocp	1.0	1.4	2.0	10.0	10.4	1.0	1.0	2.8	15.5	3.7
2000-2100	Pro	1.1	43.2	27.4	0.0	14.7	2.1	2.1	2.1	3.4	3.9
	Ocp	1.0	1.6	1.8	0.0	9.2	1.5	1.0	14.5	11.2	3.1
2100-2200	Pro	2.8	38.4	29.9	0.0	12.8	0.0	7.1	0.0	3.2	5.7
	Ocp	1.5	1.7	1.6	0.0	6.8	0.0	1.0	0.0	10.6	3.7
2200-2300	Pro	5.1	46.3	21.9	1.3	12.9	5.1	0.0	0.0	2.3	5.1
	Ocp	1.0	1.6	1.8	1.0	3.2	1.3	0.0	0.0	8.1	2.4
16 hours	Pro	3.3	36.5	17.7	2.8	11.5	15.9	3.2	3.5	2.5	3.1
	Ocp	1.1	1.6	1.9	3.8	10.8	1.7	1.6	12.0	14.7	6.8

Legend

Pro. Proportion of vehicles in % (Sum may not add up to 100% due to figure rounding)
Ocp. Average occupancy of vehicles
M&H Medium and Heavy