

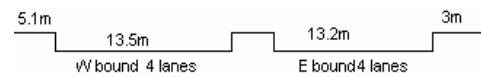
YEAR 2007

COVERAGE (B) STATION 2207

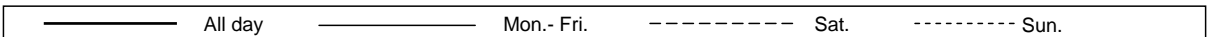
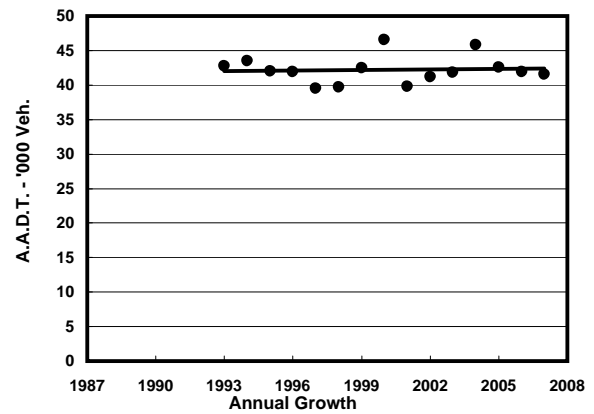
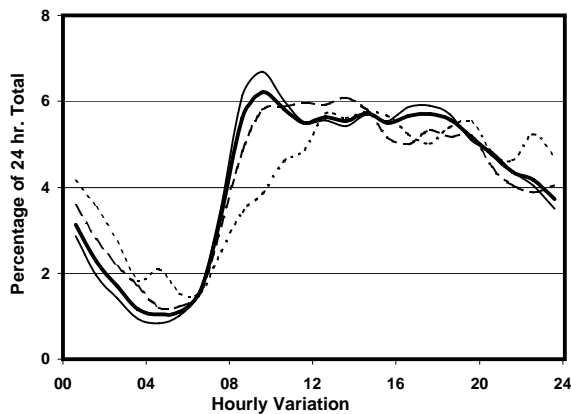
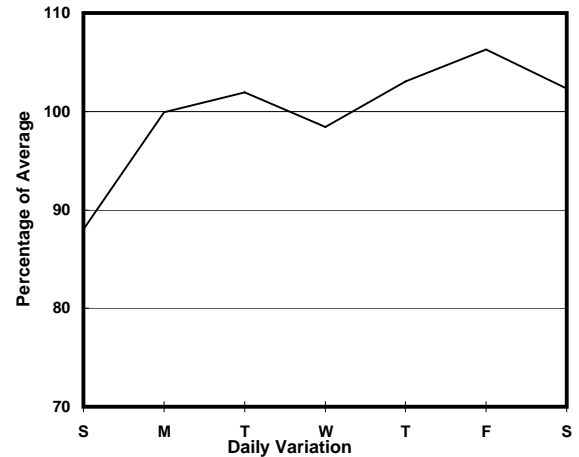
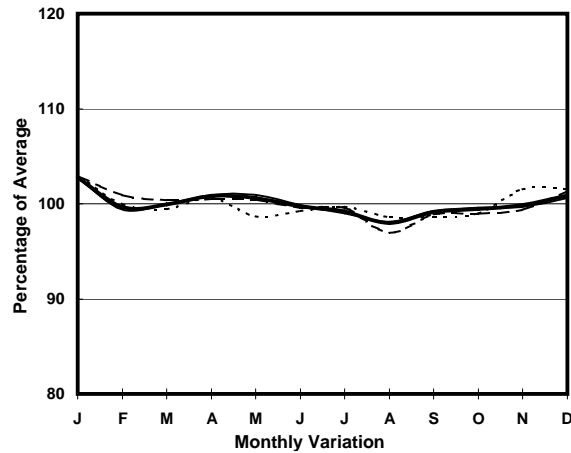
ROAD NETWORK MAJOR

ROAD TYPE PRIMARY DISTRIBUTOR

LINK CONNAUGHT RD C (from CLEVERLY ST to GILMAN ST)



1. TRAFFIC FLOW VARIATION AND GROWTH



2. TRAFFIC CHARACTERISTICS (BY DIRECTION)

| Parameter | All - Day | Mon. - Fri. | Sat. | Sun. |
|--------------------------------------|-----------|-------------|-----------|-----------|
| EAST BOUND | | | | |
| A.A.D.T. | 25990 | 27010 | 26240 | 21800 |
| R 12 / 24 - % | 64.6 | 66.7 | 62.3 | 54.4 |
| R 16 / 24 - % | 83.2 | 85.3 | 79.8 | 74.5 |
| AM Peak Hour | 0900-1000 | 0900-1000 | 0900-1000 | 0900-1000 |
| One-way flow at AM peak hour | 1560 | 1750 | 1470 | 810 |
| T - % (AM) | - | 19.9 | - | - |
| PM Peak Hour | 1600-1700 | 1600-1700 | 1700-1800 | 1600-1700 |
| One-way flow at PM peak hour | 1460 | 1580 | 1320 | 1110 |
| T - % (PM) | - | 14.8 | - | - |
| Prop.of commercial vehicles - 16 hr. | - | 16.8 | - | - |
| WEST BOUND | | | | |
| A.A.D.T. | 15560 | 15620 | 16550 | 15030 |
| R 12 / 24 - % | 67.8 | 69 | 67.1 | 62.4 |
| R 16 / 24 - % | 86.1 | 86.9 | 84.9 | 82.8 |
| AM Peak Hour | 0900-1000 | 0900-1000 | 0900-1000 | 0900-1000 |
| One-way flow at AM peak hour | 1020 | 1110 | 1020 | 620 |
| T - % (AM) | - | 14 | - | - |
| PM Peak Hour | 1700-1800 | 1700-1800 | 1700-1800 | 1800-1900 |
| One-way flow at PM peak hour | 960 | 1000 | 960 | 900 |
| T - % (PM) | - | 11.2 | - | - |
| Prop.of commercial vehicles - 16 hr. | - | 10.6 | - | - |

3. OTHER INFORMATION AND COMMENT

4. Vehicle classification and occupancy - Monday to Friday

| Time | | Class of vehicle | | | | | | | | | |
|------------------------|-----|------------------|---------|------|---------|------|------------|-------|---------|---------|------|
| | | Motor | Private | Taxi | Private | PLB | Goods veh. | | Non | Fr. Bus | |
| | | Cycle | Car | | LB | | Light | M & H | Fr. Bus | SD | DD |
| 0700-0800 | Pro | 1.5 | 6.3 | 44.2 | 1.5 | 6.5 | 16.8 | 1.8 | 6.0 | 0.3 | 15.0 |
| | Ocp | 1.2 | 1.3 | 1.9 | 2.7 | 8.7 | 1.4 | 1.3 | 13.8 | 13.4 | 21.7 |
| 0800-0900 | Pro | 3.1 | 18.8 | 41.5 | 0.9 | 2.1 | 8.7 | 1.5 | 9.1 | 0.3 | 14.1 |
| | Ocp | 1.1 | 1.4 | 1.9 | 6.5 | 14.8 | 1.7 | 1.6 | 33.2 | 22.9 | 35.9 |
| 0900-1000 Peak hour | Pro | 2.4 | 21.6 | 39.0 | 0.6 | 2.4 | 16.6 | 1.4 | 4.0 | 0.2 | 11.7 |
| | Ocp | 1.0 | 1.4 | 1.8 | 2.3 | 10.4 | 1.9 | 1.8 | 12.6 | 10.0 | 16.9 |
| 1000-1100 | Pro | 1.4 | 24.0 | 40.7 | 1.6 | 3.4 | 18.5 | 1.2 | 1.0 | 0.2 | 8.0 |
| | Ocp | 1.0 | 1.5 | 1.8 | 1.2 | 6.3 | 1.7 | 1.9 | 10.7 | 10.2 | 15.4 |
| 1100-1200 | Pro | 1.7 | 24.6 | 35.4 | 1.0 | 2.6 | 23.9 | 1.5 | 1.9 | 0.1 | 7.3 |
| | Ocp | 1.1 | 1.5 | 1.9 | 2.7 | 7.1 | 1.7 | 1.9 | 15.3 | 15.0 | 14.5 |
| 1200-1300 | Pro | 1.3 | 34.0 | 36.1 | 0.9 | 2.5 | 15.1 | 1.5 | 1.2 | 0.3 | 7.3 |
| | Ocp | 1.1 | 1.5 | 2.0 | 4.5 | 6.1 | 1.5 | 1.4 | 9.9 | 6.0 | 16.1 |
| 1300-1400 | Pro | 1.7 | 23.6 | 37.7 | 0.3 | 2.9 | 23.1 | 1.3 | 1.0 | 0.1 | 8.3 |
| | Ocp | 1.1 | 1.6 | 1.9 | 3.5 | 6.7 | 1.7 | 1.5 | 18.0 | 6.5 | 13.3 |
| 1400-1500 | Pro | 1.1 | 25.5 | 36.6 | 1.7 | 3.5 | 21.4 | 0.3 | 1.4 | 0.3 | 8.1 |
| | Ocp | 1.0 | 1.4 | 2.0 | 3.1 | 7.6 | 1.8 | 2.5 | 9.9 | 7.0 | 14.7 |
| 1500-1600 | Pro | 2.1 | 26.3 | 33.2 | 0.8 | 3.3 | 21.7 | 2.1 | 1.6 | 0.1 | 8.8 |
| | Ocp | 1.1 | 1.7 | 2.0 | 5.4 | 8.0 | 1.6 | 1.6 | 7.5 | 8.0 | 13.5 |
| 1600-1700 | Pro | 3.4 | 33.0 | 31.3 | 1.0 | 2.7 | 15.9 | 0.4 | 2.1 | 0.3 | 10.0 |
| | Ocp | 1.1 | 1.5 | 2.1 | 3.0 | 8.3 | 1.8 | 1.7 | 7.4 | 5.0 | 12.9 |
| 1700-1800 | Pro | 2.4 | 28.7 | 41.1 | 1.9 | 1.5 | 10.7 | 0.2 | 1.9 | 0.1 | 11.5 |
| | Ocp | 1.1 | 1.5 | 1.9 | 4.4 | 8.0 | 1.6 | 2.0 | 5.3 | 6.7 | 16.1 |
| 1800-1900 | Pro | 1.3 | 32.7 | 37.2 | 0.6 | 2.6 | 6.2 | 0.4 | 5.0 | 0.3 | 13.7 |
| | Ocp | 1.1 | 1.7 | 1.9 | 4.0 | 10.6 | 1.8 | 1.0 | 25.1 | 10.0 | 18.6 |
| 1900-2000 | Pro | 3.0 | 30.7 | 42.3 | 0.8 | 2.2 | 4.5 | 0.4 | 3.0 | 0.2 | 13.0 |
| | Ocp | 1.1 | 1.6 | 2.1 | 3.3 | 7.6 | 1.7 | 2.0 | 20.5 | 8.3 | 14.5 |
| 2000-2100 | Pro | 0.8 | 20.5 | 59.9 | 0.0 | 2.5 | 2.1 | 0.4 | 1.5 | 0.1 | 12.1 |
| | Ocp | 1.3 | 1.6 | 1.8 | 0.0 | 6.9 | 1.7 | 2.0 | 20.6 | 5.0 | 9.9 |
| 2100-2200 | Pro | 1.4 | 19.4 | 58.8 | 0.2 | 4.3 | 3.5 | 0.0 | 0.2 | 0.1 | 12.0 |
| | Ocp | 1.0 | 1.8 | 1.9 | 3.0 | 6.1 | 1.7 | 0.0 | 1.0 | 4.5 | 11.3 |
| 2200-2300 | Pro | 1.8 | 24.1 | 56.7 | 0.9 | 2.1 | 2.5 | 0.0 | 0.0 | 0.2 | 11.6 |
| | Ocp | 1.3 | 1.8 | 2.1 | 5.5 | 6.3 | 1.3 | 0.0 | 0.0 | 3.0 | 10.3 |
| 16 hours | Pro | 1.9 | 25.1 | 40.9 | 1.0 | 2.8 | 14.1 | 1.0 | 2.6 | 0.2 | 10.5 |
| | Ocp | 1.1 | 1.5 | 1.9 | 3.5 | 8.0 | 1.7 | 1.7 | 19.2 | 9.5 | 16.9 |

Legend

- Pro.** Proportion of vehicles in % (Sum may not add up to 100% due to figure rounding)
- Ocp.** Average occupancy of vehicles
- M&H** Medium and Heavy