

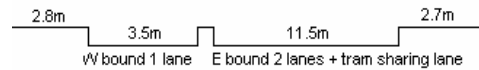
YEAR 2007

COVERAGE (B) STATION 2209

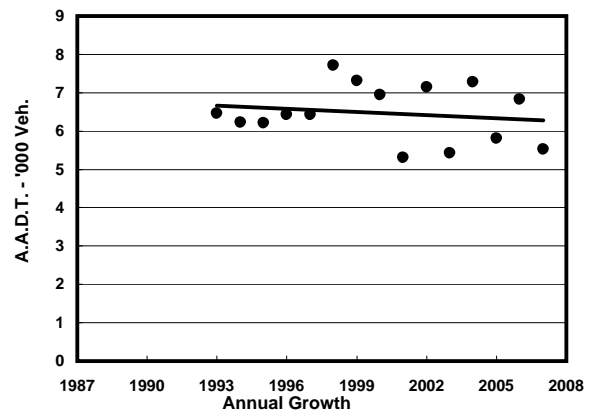
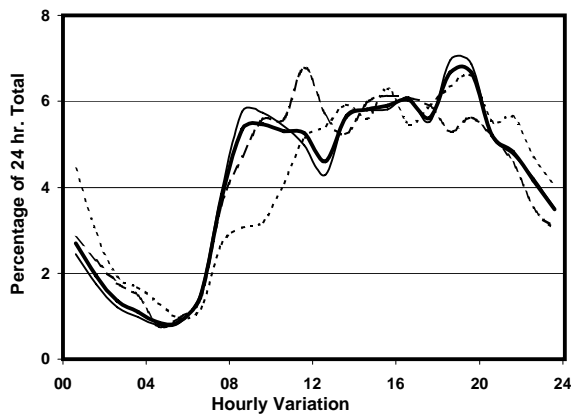
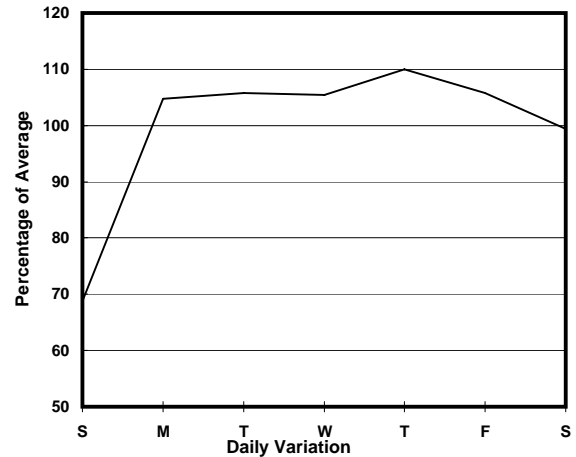
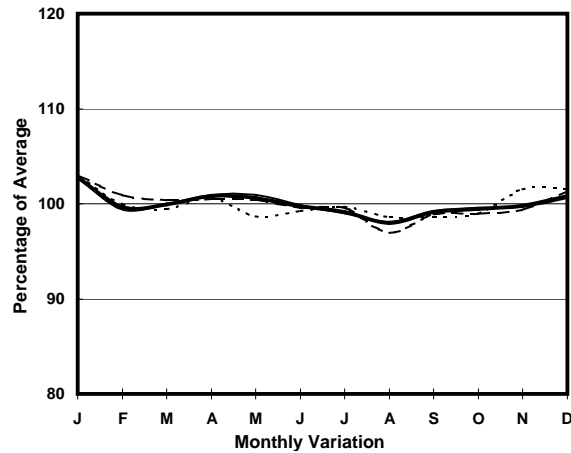
ROAD NETWORK MAJOR

ROAD TYPE DISTRICT DISTRIBUTOR

LINK DES VOEUX RD C (from MORRISON ST to QUEEN VICTORIA ST)



### 1. TRAFFIC FLOW VARIATION AND GROWTH



— All day — Mon.- Fri. - - - - Sat. - - - - - Sun.

### 2. TRAFFIC CHARACTERISTICS (BY DIRECTION)

Parameter	All - Day	Mon. - Fri.	Sat.	Sun.
<b>EAST BOUND</b>				
A.A.D.T.	3640	4020	3670	2160
R 12 / 24 - %	65.7	66.3	67.8	57.2
R 16 / 24 - %	86.5	87.5	85.5	79.1
AM Peak Hour	0800-0900	0800-0900	0900-1000	0900-1000
One-way flow at AM peak hour	180	220	200	40
T - % (AM)	-	21.5	-	-
PM Peak Hour	1800-1900	1800-1900	1600-1700	1800-1900
One-way flow at PM peak hour	260	290	240	170
T - % (PM)	-	14.9	-	-
Prop.of commercial vehicles - 16 hr.	-	16.8	-	-
<b>WEST BOUND</b>				
A.A.D.T.	1890	1970	1930	1710
R 12 / 24 - %	64.6	65	64.2	61.5
R 16 / 24 - %	85.7	85.7	85.3	84.8
AM Peak Hour	0900-1000	0900-1000	0900-1000	0800-0900
One-way flow at AM peak hour	130	140	120	90
T - % (AM)	-	88	-	-
PM Peak Hour	1800-1900	1800-1900	1700-1800	1600-1700
One-way flow at PM peak hour	110	130	120	90
T - % (PM)	-	96.6	-	-
Prop.of commercial vehicles - 16 hr.	-	91	-	-

### 3. OTHER INFORMATION AND COMMENT

**4. Vehicle classification and occupancy - Monday to Friday**

Time		Class of vehicle									
		Motor	Private	Taxi	Private	PLB	Goods veh.		Non	Fr. Bus	
		Cycle	Car		LB		Light	M & H	Fr. Bus	SD	DD
0700-0800	Pro	2.1	4.1	14.4	4.1	0.0	16.5	0.0	0.0	2.6	56.2
	Ocp	1.0	1.0	1.7	2.0	0.0	1.4	0.0	0.0	16.8	29.1
0800-0900	Pro	3.3	11.1	25.6	0.0	0.0	16.7	0.0	3.3	2.0	37.9
	Ocp	1.0	1.2	1.8	0.0	0.0	1.5	0.0	1.0	35.6	34.3
0900-1000	Pro	0.0	15.0	17.3	1.2	0.0	18.4	1.2	2.3	0.6	44.1
	Ocp	0.0	1.1	1.5	1.0	0.0	1.3	1.0	27.5	7.5	17.9
1000-1100	Pro	1.0	17.3	17.3	1.0	0.0	28.6	2.0	0.0	0.5	32.1
	Ocp	1.0	1.1	1.4	1.0	0.0	2.0	1.0	0.0	10.0	18.5
1100-1200	Pro	2.8	21.0	15.4	1.4	0.0	15.4	1.4	0.0	1.0	41.6
	Ocp	1.0	1.3	1.4	1.0	0.0	1.5	2.0	0.0	12.0	17.2
1200-1300	Pro	1.1	25.7	29.0	1.1	0.0	10.7	0.0	0.0	0.5	31.9
	Ocp	1.0	1.6	1.4	2.0	0.0	1.5	0.0	0.0	7.5	20.0
1300-1400	Pro	2.9	11.5	23.0	0.0	0.0	20.1	0.0	0.0	0.7	41.7
	Ocp	1.0	1.1	1.8	0.0	0.0	1.6	0.0	0.0	10.0	21.7
1400-1500	Pro	2.1	30.5	18.9	1.1	0.0	14.7	0.0	0.0	0.3	32.4
	Ocp	1.5	1.4	1.4	5.0	0.0	1.8	0.0	0.0	5.0	26.6
1500-1600	Pro	2.1	34.8	16.9	0.0	0.0	19.0	0.0	0.0	0.5	26.7
	Ocp	1.0	1.4	1.5	0.0	0.0	1.7	0.0	0.0	6.0	25.6
1600-1700	Pro	1.0	29.9	16.5	1.0	0.0	16.5	0.0	0.0	0.5	34.5
	Ocp	1.0	1.6	1.7	2.0	0.0	1.6	0.0	0.0	8.5	25.7
1700-1800	Pro	0.0	37.1	18.1	1.0	0.0	6.7	1.0	1.0	0.5	34.9
	Ocp	0.0	1.5	1.4	1.0	0.0	1.4	1.0	3.0	9.0	39.9
1800-1900 Peak hour	Pro	4.8	23.9	24.9	0.0	0.0	8.6	0.0	1.0	0.7	36.1
	Ocp	1.4	1.5	1.4	0.0	0.0	1.9	0.0	5.0	19.7	52.9
1900-2000	Pro	2.7	30.7	20.0	0.0	0.0	0.0	0.0	0.0	0.7	46.0
	Ocp	1.0	1.2	1.3	0.0	0.0	0.0	0.0	0.0	8.5	41.4
2000-2100	Pro	1.3	6.5	44.2	0.0	0.0	2.6	0.0	0.0	0.7	44.8
	Ocp	1.0	1.2	1.2	0.0	0.0	1.0	0.0	0.0	3.5	39.2
2100-2200	Pro	0.0	11.9	50.2	0.0	0.0	1.3	1.3	0.0	1.0	34.3
	Ocp	0.0	2.1	1.4	0.0	0.0	1.0	2.0	0.0	3.0	32.8
2200-2300	Pro	0.0	21.2	33.3	0.0	0.0	1.5	0.0	1.5	0.8	41.7
	Ocp	0.0	1.9	1.4	0.0	0.0	1.0	0.0	12.0	6.0	31.0
16 hours	Pro	1.7	21.9	23.7	0.7	0.0	12.6	0.4	0.6	0.8	37.6
	Ocp	1.1	1.4	1.5	1.9	0.0	1.6	1.3	9.8	14.2	30.1

**Legend**

- Pro.** Proportion of vehicles in % (Sum may not add up to 100% due to figure rounding)
- Ocp.** Average occupancy of vehicles
- M&H** Medium and Heavy