

YEAR

2007

LINK KENNEDY RD (from MACDONNELL RD to QUEEN'S RD
E)

COVERAGE (B) STATION

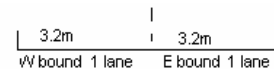
2213

ROAD NETWORK

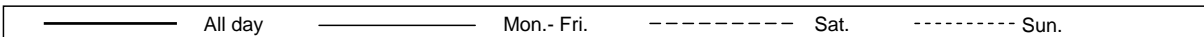
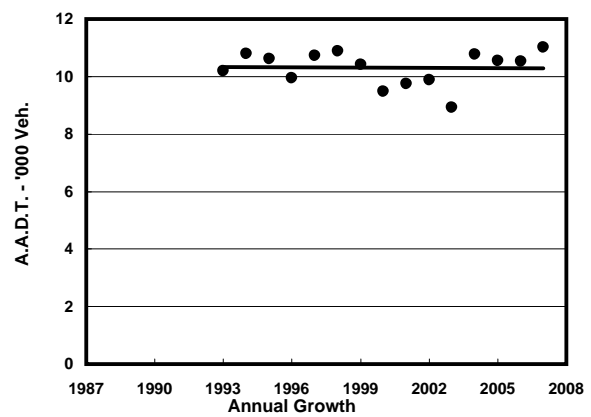
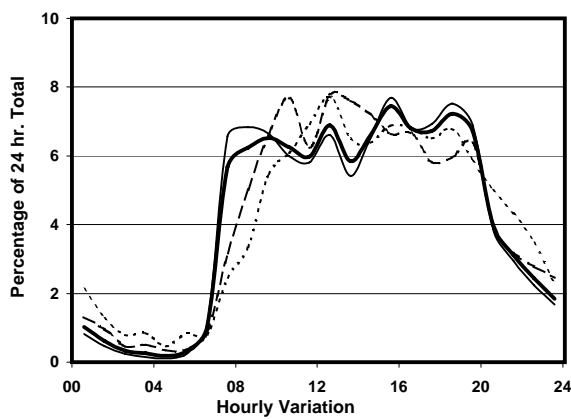
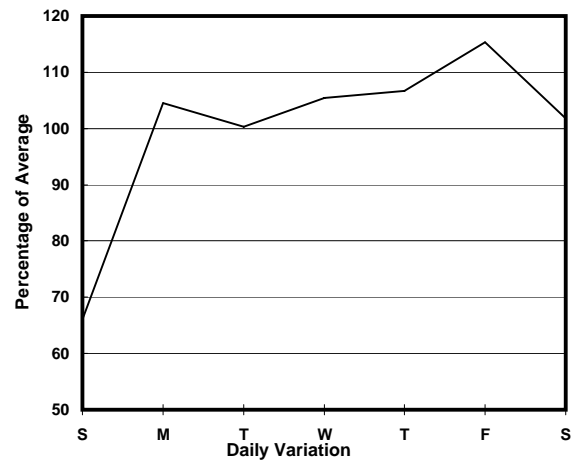
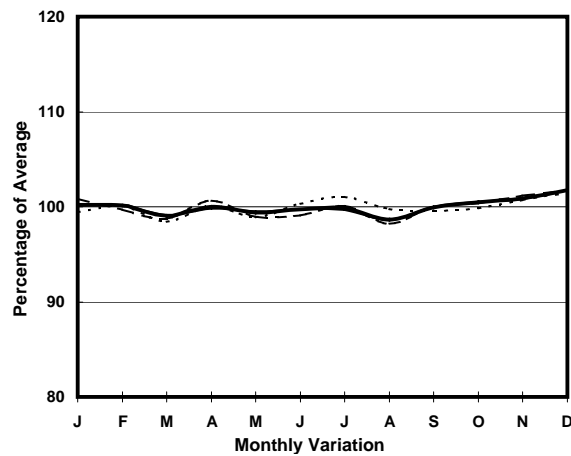
MAJOR

ROAD TYPE

DISTRICT DISTRIBUTOR



1. TRAFFIC FLOW VARIATION AND GROWTH



2. TRAFFIC CHARACTERISTICS (BY DIRECTION)

Parameter	All - Day	Mon. - Fri.	Sat.	Sun.
EAST BOUND				
A.A.D.T.	7430	8030	7820	5000
R 12 / 24 - %	77.9	78.8	76.9	72.5
R 16 / 24 - %	94.6	95.4	92.9	90.6
AM Peak Hour	0900-1000	0800-0900	0900-1000	0900-1000
One-way flow at AM peak hour	450	500	510	260
T - % (AM)	-	5.4	-	-
PM Peak Hour	1800-1900	1800-1900	1600-1700	1800-1900
One-way flow at PM peak hour	580	660	550	360
T - % (PM)	-	2.8	-	-
Prop.of commercial vehicles - 16 hr.	-	3.3	-	-

WEST BOUND				
A.A.D.T.	3590	3910	3600	2420
R 12 / 24 - %	78.7	80.3	75.3	70.8
R 16 / 24 - %	94.1	94.9	92.1	90.4
AM Peak Hour	0900-1000	0700-0800	0900-1000	0900-1000
One-way flow at AM peak hour	270	340	250	150
T - % (AM)	-	10.9	-	-
PM Peak Hour	1600-1700	1800-1900	1600-1700	1600-1700
One-way flow at PM peak hour	220	240	210	170
T - % (PM)	-	1.9	-	-
Prop.of commercial vehicles - 16 hr.	-	3.6	-	-

3. OTHER INFORMATION AND COMMENT

4. Vehicle classification and occupancy - Monday to Friday

Time		Class of vehicle									
		Motor	Private	Taxi	Private	PLB	Goods veh.		Non	Fr. Bus	
		Cycle	Car		LB		Light	M & H	Fr. Bus	SD	DD
0700-0800	Pro	0.6	18.1	47.7	12.3	7.7	1.9	1.3	10.3	0.0	0.0
	Ocp	1.0	2.0	1.8	5.9	6.2	2.3	1.0	12.9	0.0	0.0
0800-0900	Pro	1.0	58.8	18.6	5.0	3.0	9.0	0.0	4.5	0.0	0.0
	Ocp	1.0	1.4	2.1	4.6	7.3	1.5	0.0	9.7	0.0	0.0
0900-1000	Pro	0.5	54.3	32.1	1.1	3.3	7.6	0.5	0.5	0.0	0.0
	Ocp	1.0	1.6	1.8	3.5	6.7	2.1	2.0	15.0	0.0	0.0
1000-1100	Pro	1.0	36.1	35.1	3.7	3.1	15.2	1.0	4.7	0.0	0.0
	Ocp	1.0	1.4	1.6	4.7	5.2	1.4	1.5	8.9	0.0	0.0
1100-1200	Pro	3.1	48.1	26.9	1.9	3.1	16.3	0.6	0.0	0.0	0.0
	Ocp	1.0	1.6	1.8	3.7	8.6	2.0	3.0	0.0	0.0	0.0
1200-1300	Pro	2.6	42.8	34.0	7.2	2.1	7.2	0.5	3.6	0.0	0.0
	Ocp	1.2	1.6	1.9	4.1	10.5	1.7	1.0	11.7	0.0	0.0
1300-1400	Pro	1.3	38.8	36.3	3.8	4.4	11.3	0.6	3.8	0.0	0.0
	Ocp	1.0	1.5	1.7	4.5	9.7	1.7	4.0	11.7	0.0	0.0
1400-1500	Pro	0.6	45.0	33.8	2.5	4.4	11.9	0.0	1.9	0.0	0.0
	Ocp	1.0	1.7	1.5	1.8	12.6	1.8	0.0	1.0	0.0	0.0
1500-1600 Peak hour	Pro	0.0	53.7	29.2	1.4	1.9	10.6	0.5	2.8	0.0	0.0
	Ocp	0.0	1.9	1.8	7.3	11.8	1.7	1.0	9.2	0.0	0.0
1600-1700	Pro	4.0	43.2	30.7	3.0	1.5	15.1	0.5	2.0	0.0	0.0
	Ocp	1.0	1.7	1.8	4.0	10.7	2.0	4.0	5.3	0.0	0.0
1700-1800	Pro	2.7	49.5	27.4	4.3	3.2	8.6	0.0	4.3	0.0	0.0
	Ocp	1.4	1.7	1.9	1.4	12.7	1.8	0.0	4.1	0.0	0.0
1800-1900	Pro	1.5	47.4	39.7	0.0	3.1	5.7	0.0	2.6	0.0	0.0
	Ocp	1.0	1.6	2.0	0.0	15.8	2.0	0.0	7.2	0.0	0.0
1900-2000	Pro	3.7	58.5	31.4	0.0	2.7	2.7	0.0	1.1	0.0	0.0
	Ocp	1.0	1.5	1.9	0.0	10.8	2.0	0.0	1.0	0.0	0.0
2000-2100	Pro	0.0	61.3	28.8	0.0	6.3	0.9	0.9	1.8	0.0	0.0
	Ocp	0.0	1.5	1.9	0.0	7.7	1.0	2.0	6.5	0.0	0.0
2100-2200	Pro	0.0	50.0	43.5	0.0	6.5	0.0	0.0	0.0	0.0	0.0
	Ocp	0.0	1.6	2.0	0.0	7.5	0.0	0.0	0.0	0.0	0.0
2200-2300	Pro	0.0	51.6	42.2	0.0	6.3	0.0	0.0	0.0	0.0	0.0
	Ocp	0.0	1.6	1.7	0.0	9.8	0.0	0.0	0.0	0.0	0.0
16 hours	Pro	1.6	47.1	32.6	3.1	3.5	8.7	0.4	3.0	0.0	0.0
	Ocp	1.1	1.6	1.8	4.4	9.3	1.8	2.0	9.0	0.0	0.0

Legend

- Pro.** Proportion of vehicles in % (Sum may not add up to 100% due to figure rounding)
- Ocp.** Average occupancy of vehicles
- M&H** Medium and Heavy