

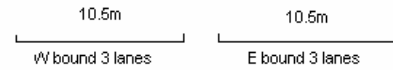
YEAR 2007

COVERAGE (B) STATION 2215

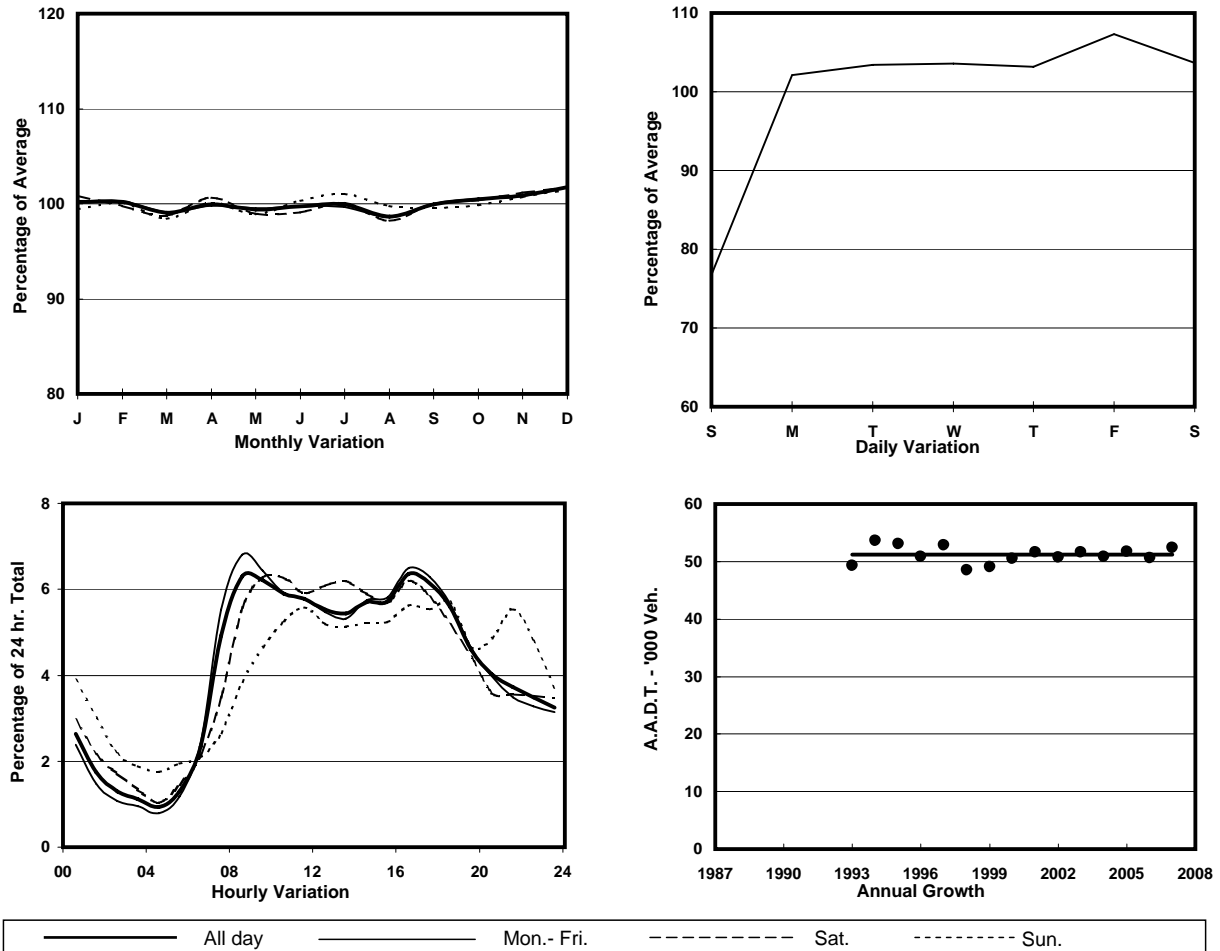
ROAD NETWORK MAJOR

ROAD TYPE EXPRESSWAY

LINK ISLAND EASTERN CORRIDOR (from MONG LUNG ST to WING TAI RD INT)



1. TRAFFIC FLOW VARIATION AND GROWTH



2. TRAFFIC CHARACTERISTICS (BY DIRECTION)

Parameter	All - Day	Mon. - Fri.	Sat.	Sun.
EAST BOUND				
A.A.D.T.	25830	27110	27190	20360
R 12 / 24 - %	67.6	69.4	66.5	56.8
R 16 / 24 - %	85	86.4	83	78.5
AM Peak Hour	0900-1000	0900-1000	0900-1000	0900-1000
One-way flow at AM peak hour	1640	1820	1670	830
T - % (AM)	-	14.9	-	-
PM Peak Hour	1600-1700	1600-1700	1600-1700	1600-1700
One-way flow at PM peak hour	1700	1820	1740	1200
T - % (PM)	-	11.9	-	-
Prop.of commercial vehicles - 16 hr.	-	12.5	-	-
WEST BOUND				
A.A.D.T.	26590	28050	27850	20410
R 12 / 24 - %	71.6	73	70.7	62.5
R 16 / 24 - %	85.8	86.8	84.4	80.6
AM Peak Hour	0800-0900	0800-0900	0900-1000	0900-1000
One-way flow at AM peak hour	1860	2110	1790	1070
T - % (AM)	-	7.7	-	-
PM Peak Hour	1700-1800	1700-1800	1600-1700	1800-1900
One-way flow at PM peak hour	1670	1810	1680	1150
T - % (PM)	-	11.5	-	-
Prop.of commercial vehicles - 16 hr.	-	11.3	-	-

3. OTHER INFORMATION AND COMMENT

4. Vehicle classification and occupancy - Monday to Friday

Time		Class of vehicle									
		Motor	Private	Taxi	Private	PLB	Goods veh.		Non	Fr. Bus	
		Cycle	Car		LB		Light	M & H	Fr. Bus	SD	DD
0700-0800	Pro	4.5	20.9	32.1	3.2	0.0	19.3	6.4	8.4	0.1	5.1
	Ocp	1.0	1.4	1.9	5.7	0.0	1.5	1.4	15.3	1.0	41.4
0800-0900	Pro	4.6	35.2	27.8	1.7	0.0	20.4	3.2	4.0	0.0	3.0
	Ocp	1.1	1.4	1.7	3.2	0.0	1.7	1.8	9.3	0.0	50.4
0900-1000	Pro	3.8	32.8	19.2	1.4	0.0	31.0	4.8	3.1	0.1	3.7
	Ocp	1.1	1.4	1.9	3.5	0.0	1.7	1.7	4.7	1.0	21.7
1000-1100	Pro	2.9	27.7	17.3	1.4	0.0	40.9	4.7	1.4	0.1	3.7
	Ocp	1.0	1.4	1.7	2.5	0.0	1.7	1.7	2.4	1.0	19.2
1100-1200	Pro	4.9	23.2	13.4	2.9	0.0	43.3	5.9	3.6	0.1	2.8
	Ocp	1.1	1.4	1.6	2.2	0.0	1.7	1.6	2.9	1.0	24.5
1200-1300	Pro	2.9	29.9	13.9	1.5	0.0	36.1	7.5	5.5	0.0	2.6
	Ocp	1.1	1.5	1.8	2.6	0.0	1.6	1.6	9.2	0.0	29.9
1300-1400	Pro	2.7	26.0	15.7	2.1	0.0	40.1	5.5	5.5	0.1	2.4
	Ocp	1.0	1.3	1.5	2.5	0.0	1.7	1.7	5.2	1.0	27.0
1400-1500	Pro	1.6	29.7	14.8	2.1	0.0	38.4	7.7	2.6	0.1	2.9
	Ocp	1.0	1.5	1.9	2.9	0.0	1.7	1.6	3.2	1.0	25.6
1500-1600	Pro	3.4	30.1	17.3	2.1	0.0	37.1	5.7	1.9	0.1	2.5
	Ocp	1.1	1.5	1.7	5.2	0.0	1.6	1.3	8.0	1.0	25.9
1600-1700	Pro	3.2	23.9	24.0	2.7	0.0	32.6	5.5	4.9	0.1	3.0
	Ocp	1.1	1.5	1.6	2.2	0.0	1.7	1.8	8.6	1.0	31.9
1700-1800	Pro	5.8	33.4	17.7	2.2	0.0	29.6	4.7	2.8	0.1	3.6
	Ocp	1.0	1.5	1.6	2.4	0.0	1.6	1.6	4.2	1.0	39.3
1800-1900	Pro	7.6	46.7	15.4	1.4	0.0	21.2	1.7	2.6	0.1	3.4
	Ocp	1.1	1.4	1.9	3.7	0.0	1.7	1.5	6.4	11.0	55.5
1900-2000	Pro	7.1	48.5	16.5	1.1	0.0	17.1	2.2	2.5	0.2	4.9
	Ocp	1.1	1.4	1.9	1.1	0.0	1.5	1.4	3.0	19.5	38.4
2000-2100	Pro	4.2	46.7	23.7	0.2	0.0	13.6	2.1	1.6	0.7	7.2
	Ocp	1.3	1.6	1.9	1.0	0.0	2.0	1.8	1.4	3.9	19.2
2100-2200	Pro	5.1	41.4	34.8	0.6	0.0	8.5	3.2	0.4	0.6	5.3
	Ocp	1.3	1.7	1.7	5.3	0.0	1.9	1.6	1.0	7.6	33.3
2200-2300	Pro	7.2	38.1	39.0	0.7	0.0	7.2	1.1	0.4	0.5	5.8
	Ocp	1.1	1.8	1.7	1.0	0.0	1.8	1.6	1.5	4.9	25.7
16 hours	Pro	4.4	32.8	20.8	1.8	0.0	28.4	4.6	3.4	0.2	3.7
	Ocp	1.1	1.5	1.8	3.2	0.0	1.7	1.6	7.5	5.2	32.0

Legend

Pro. Proportion of vehicles in % (Sum may not add up to 100% due to figure rounding)
Ocp. Average occupancy of vehicles
M&H Medium and Heavy