

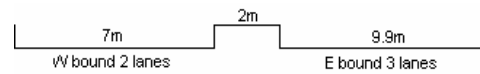
YEAR 2007

COVERAGE (B) STATION 2216

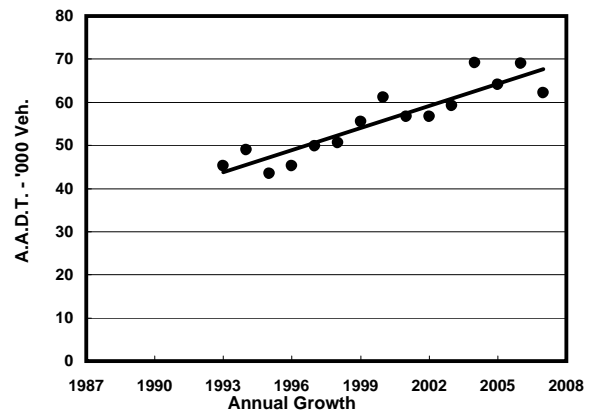
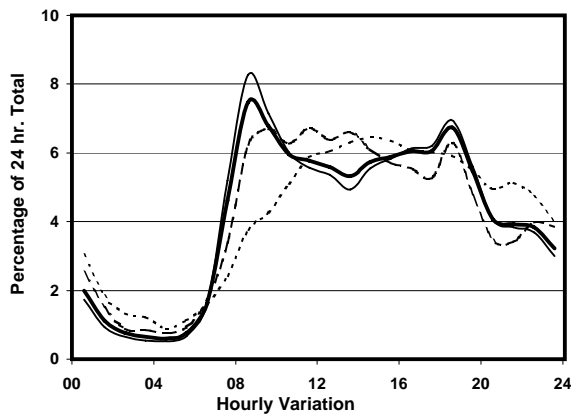
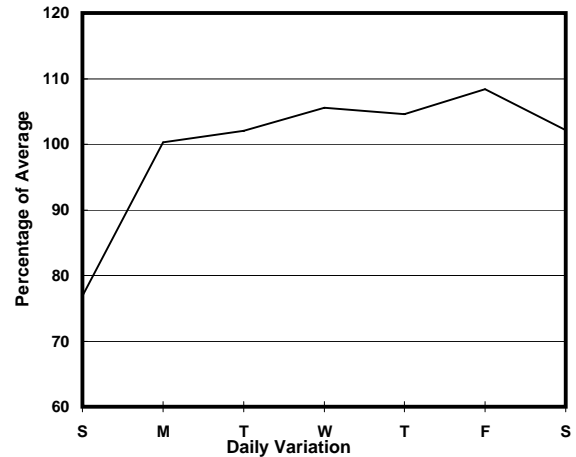
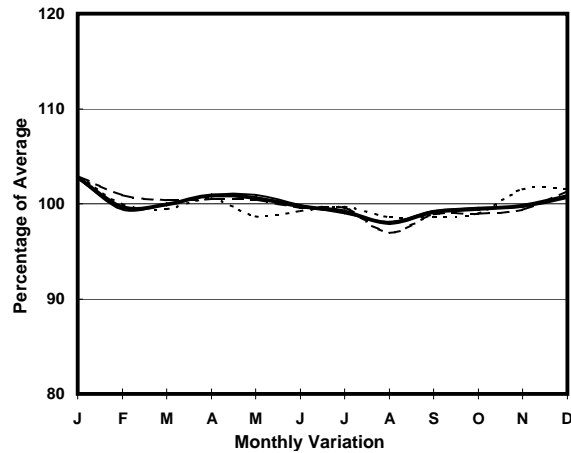
ROAD NETWORK MAJOR

ROAD TYPE PRIMARY DISTRIBUTOR

LINK CONNAUGHT RD FO <H173> (from RAMP NR GILMAN ST to THE NEAREST DIVERGING & MERGING POINTS WEST OF SHUN TAK CENTRE)



## 1. TRAFFIC FLOW VARIATION AND GROWTH



— All day    — Mon.- Fri.    - - - - - Sat.    - - - - - Sun.

## 2. TRAFFIC CHARACTERISTICS (BY DIRECTION)

Parameter	All - Day	Mon. - Fri.	Sat.	Sun.
<b>EAST BOUND</b>				
A.A.D.T.	30700	32380	31950	23780
R 12 / 24 - %	75.5	76.7	74.7	68.3
R 16 / 24 - %	90.8	91.6	89.4	87.1
AM Peak Hour	0800-0900	0800-0900	0900-1000	0900-1000
One-way flow at AM peak hour	2580	3020	2330	1010
T - % (AM)	-	4.9	-	-
PM Peak Hour	1800-1900	1800-1900	1800-1900	1600-1700
One-way flow at PM peak hour	1970	2110	1930	1530
T - % (PM)	-	5.2	-	-
Prop.of commercial vehicles - 16 hr.	-	5.7	-	-

<b>WEST BOUND</b>				
A.A.D.T.	31480	33230	32350	24660
R 12 / 24 - %	68.5	69.7	67.9	61.2
R 16 / 24 - %	87.8	89.1	84.5	82.9
AM Peak Hour	0800-0900	0800-0900	0900-1000	0900-1000
One-way flow at AM peak hour	2070	2410	1980	1050
T - % (AM)	-	5.4	-	-
PM Peak Hour	1800-1900	1800-1900	1800-1900	1700-1800
One-way flow at PM peak hour	2220	2450	2110	1430
T - % (PM)	-	4.1	-	-
Prop.of commercial vehicles - 16 hr.	-	4.9	-	-

## 3. OTHER INFORMATION AND COMMENT

**4. Vehicle classification and occupancy - Monday to Friday**

Time		Class of vehicle									
		Motor	Private	Taxi	Private	PLB	Goods veh.		Non	Fr. Bus	
		Cycle	Car		LB		Light	M & H	Fr. Bus	SD	DD
0700-0800	Pro	2.7	23.8	46.7	1.2	4.4	13.6	3.1	3.2	0.0	1.2
	Ocp	1.0	1.6	1.8	8.7	11.0	1.4	1.2	15.7	0.0	22.2
0800-0900	Pro	3.1	43.7	36.2	0.6	3.5	7.8	1.8	2.2	0.1	1.1
	Ocp	1.1	1.4	1.8	3.4	13.4	1.6	1.3	27.3	9.0	31.6
0900-1000	Pro	1.6	37.7	37.0	0.5	1.5	15.7	3.5	1.5	0.1	0.9
	Ocp	1.1	1.4	1.8	2.6	10.9	1.8	1.6	15.5	10.7	17.3
1000-1100	Pro	1.7	34.2	31.4	1.5	0.6	24.9	4.4	0.6	0.1	0.8
	Ocp	1.0	1.6	1.9	2.9	11.0	1.7	1.6	20.3	9.3	11.7
1100-1200	Pro	2.9	37.6	27.5	1.3	1.0	23.4	4.1	1.4	0.1	0.8
	Ocp	1.0	1.6	2.0	2.0	5.4	1.7	1.4	8.0	4.0	12.9
1200-1300	Pro	2.5	38.1	29.7	1.8	0.8	21.4	3.4	1.5	0.1	0.7
	Ocp	1.0	1.7	1.9	3.7	4.8	1.7	1.6	21.6	3.3	13.2
1300-1400	Pro	3.3	39.7	30.8	1.2	1.3	17.2	4.4	1.3	0.1	0.7
	Ocp	1.1	1.7	2.0	3.4	7.3	1.8	1.4	15.9	2.3	16.3
1400-1500	Pro	2.7	39.0	25.3	1.2	1.0	25.1	3.5	1.4	0.1	0.8
	Ocp	1.0	1.7	2.2	3.1	11.0	1.6	1.6	11.9	5.0	13.9
1500-1600	Pro	2.3	40.5	29.3	1.9	0.9	18.2	3.2	2.8	0.1	0.8
	Ocp	1.2	1.6	2.2	2.6	10.4	1.8	1.5	13.8	4.0	15.4
1600-1700	Pro	1.7	45.3	28.2	1.7	1.2	17.7	1.7	1.6	0.1	1.0
	Ocp	1.1	1.7	2.1	2.2	10.7	1.8	1.6	8.0	7.5	13.6
1700-1800	Pro	2.9	45.7	30.1	1.3	1.8	12.8	1.7	2.4	0.1	1.2
	Ocp	1.1	1.7	2.2	4.2	13.6	1.6	1.4	10.8	11.7	17.3
1800-1900	Pro	2.7	56.1	26.0	0.4	2.0	8.2	0.6	2.9	0.1	1.0
	Ocp	1.2	1.6	2.2	1.8	15.6	1.9	1.5	32.8	15.3	34.1
1900-2000	Pro	2.2	51.6	34.1	0.2	2.2	5.3	0.3	2.7	0.1	1.4
	Ocp	1.1	1.6	2.0	8.0	15.4	1.6	1.5	25.7	20.3	23.6
2000-2100	Pro	2.5	44.9	39.6	0.0	4.2	4.4	1.4	1.7	0.1	1.3
	Ocp	1.1	1.5	1.9	0.0	11.3	1.6	1.3	17.3	8.0	8.8
2100-2200	Pro	1.8	43.9	45.5	0.3	4.1	1.7	1.4	0.8	0.0	0.5
	Ocp	1.3	1.7	2.0	2.5	10.4	1.4	1.4	21.7	0.0	8.5
2200-2300	Pro	1.1	46.8	43.0	0.2	3.6	2.7	0.7	1.2	0.0	0.7
	Ocp	1.2	1.8	1.8	1.0	9.2	1.6	1.7	25.7	0.0	5.3
16 hours	Pro	2.4	42.3	33.4	0.9	2.1	13.7	2.4	1.9	0.1	1.0
	Ocp	1.1	1.6	2.0	3.4	11.6	1.7	1.5	19.6	9.0	18.8

**Legend**

- Pro.** Proportion of vehicles in % (Sum may not add up to 100% due to figure rounding)
- Ocp.** Average occupancy of vehicles
- M&H** Medium and Heavy