

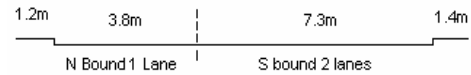
YEAR 2007

COVERAGE (B) STATION 2407

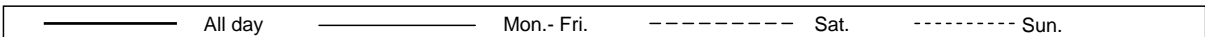
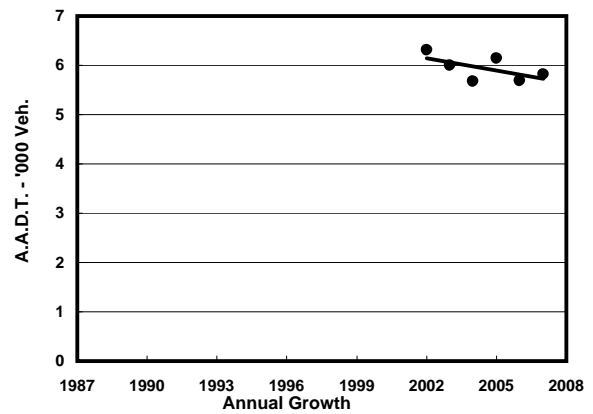
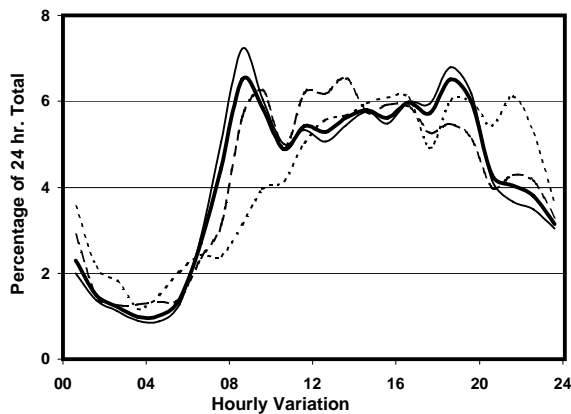
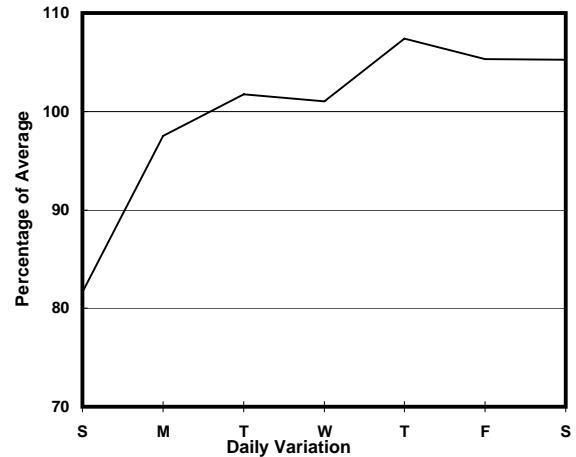
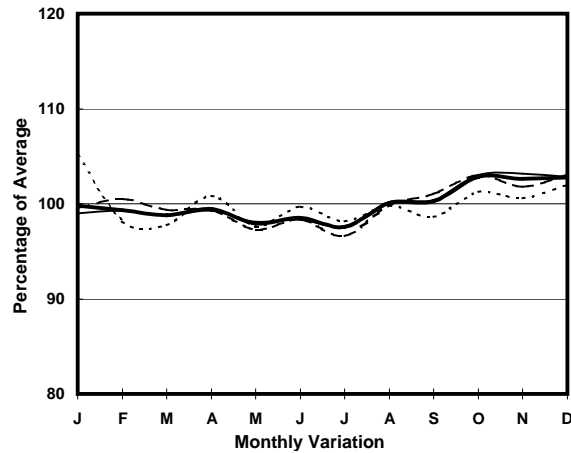
ROAD NETWORK MINOR

ROAD TYPE DISTRICT DISTRIBUTOR

LINK SMITHFIELD RD (from POK FU LAM RD to LUNG WAH ST)



1. TRAFFIC FLOW VARIATION AND GROWTH



2. TRAFFIC CHARACTERISTICS (BY DIRECTION)

Parameter	All - Day	Mon. - Fri.	Sat.	Sun.
SOUTH BOUND				
A.A.D.T.	1130	1130	1240	1100
R 12 / 24 - %	64.7	65.6	64.2	60.3
R 16 / 24 - %	82.1	82.7	81.2	79.7
AM Peak Hour	0900-1000	0800-0900	0900-1000	0900-1000
One-way flow at AM peak hour	60	70	70	60
T - % (AM)	-	5	-	-
PM Peak Hour	1600-1700	1600-1700	1600-1700	1800-1900
One-way flow at PM peak hour	60	60	80	80
T - % (PM)	-	3	-	-
Prop.of commercial vehicles - 16 hr.	-	3.5	-	-
NORTH BOUND				
A.A.D.T.	4690	4900	4950	3700
R 12 / 24 - %	68.3	69.9	67.9	58.6
R 16 / 24 - %	86.6	87.5	85.6	82.4
AM Peak Hour	0800-0900	0800-0900	0900-1000	0900-1000
One-way flow at AM peak hour	320	360	320	130
T - % (AM)	-	10.2	-	-
PM Peak Hour	1800-1900	1800-1900	1600-1700	1600-1700
One-way flow at PM peak hour	320	350	280	230
T - % (PM)	-	7.3	-	-
Prop.of commercial vehicles - 16 hr.	-	7.2	-	-

3. OTHER INFORMATION AND COMMENT

4. Vehicle classification and occupancy - Monday to Friday

Time		Class of vehicle									
		Motor	Private	Taxi	Private	PLB	Goods veh.		Non	Fr. Bus	
		Cycle	Car		LB		Light	M & H	Fr. Bus	SD	DD
0700-0800	Pro	3.7	25.6	39.0	3.7	2.4	17.1	1.2	6.1	1.2	0.0
	Ocp	1.0	1.3	1.9	6.0	14.5	1.2	3.0	14.6	25.5	0.0
0800-0900 Peak hour	Pro	6.4	38.5	37.2	1.3	1.3	9.6	0.6	4.5	0.6	0.0
	Ocp	1.1	1.3	1.9	4.0	9.0	1.4	1.0	6.4	23.5	0.0
0900-1000	Pro	4.5	41.0	23.8	2.2	0.7	23.1	0.7	3.0	0.9	0.0
	Ocp	1.0	1.3	2.1	6.0	12.0	1.7	1.0	1.3	11.8	0.0
1000-1100	Pro	3.4	57.1	16.8	1.1	1.1	17.9	1.1	0.0	1.4	0.0
	Ocp	1.3	1.4	1.9	4.0	1.0	1.8	2.0	0.0	10.2	0.0
1100-1200	Pro	4.5	31.7	23.6	1.8	0.9	32.7	2.7	0.9	1.1	0.0
	Ocp	1.0	1.4	1.9	3.0	1.0	1.5	2.0	1.0	4.0	0.0
1200-1300	Pro	2.3	40.9	28.1	1.2	2.3	19.9	2.3	1.2	1.8	0.0
	Ocp	1.0	1.5	2.1	2.0	9.0	1.8	1.5	4.0	5.5	0.0
1300-1400	Pro	2.9	22.8	32.3	2.9	1.9	31.4	2.9	1.9	1.2	0.0
	Ocp	1.0	1.7	1.9	1.3	1.5	1.4	1.0	2.5	6.8	0.0
1400-1500	Pro	3.1	45.8	24.0	4.2	1.0	17.7	1.0	2.1	1.0	0.0
	Ocp	1.3	1.3	2.3	1.5	5.0	1.8	1.0	1.0	5.8	0.0
1500-1600	Pro	2.9	30.0	31.9	1.9	0.0	29.0	1.9	1.0	1.5	0.0
	Ocp	1.0	1.6	1.5	1.0	0.0	1.4	1.5	8.0	7.7	0.0
1600-1700	Pro	5.3	44.6	25.5	2.1	1.1	18.0	1.1	1.1	1.3	0.0
	Ocp	1.0	1.3	1.7	1.5	12.0	1.2	1.0	6.0	9.0	0.0
1700-1800	Pro	4.4	49.2	21.9	4.4	3.3	13.1	0.0	2.2	1.6	0.0
	Ocp	1.0	1.5	2.3	2.0	16.0	1.5	0.0	3.0	12.7	0.0
1800-1900	Pro	4.2	46.0	31.8	3.3	4.2	4.2	0.8	4.2	1.3	0.0
	Ocp	1.0	1.4	1.9	1.3	17.0	1.2	2.0	7.8	9.7	0.0
1900-2000	Pro	2.8	68.7	17.7	0.7	1.4	6.4	0.0	1.4	0.9	0.0
	Ocp	1.3	1.5	2.0	1.0	10.5	1.4	0.0	1.5	7.6	0.0
2000-2100	Pro	2.1	67.9	25.5	0.0	1.1	3.2	0.0	0.0	0.3	0.0
	Ocp	1.0	1.4	2.2	0.0	8.0	1.7	0.0	0.0	4.0	0.0
2100-2200	Pro	5.2	55.2	29.3	0.0	1.7	8.6	0.0	0.0	0.0	0.0
	Ocp	1.0	1.5	2.1	0.0	1.0	1.8	0.0	0.0	0.0	0.0
2200-2300	Pro	6.3	46.3	37.5	0.0	3.8	5.0	1.3	0.0	0.0	0.0
	Ocp	1.4	1.8	2.0	0.0	8.3	1.8	2.0	0.0	0.0	0.0
16 hours	Pro	4.0	44.4	27.7	2.0	1.7	16.1	1.1	2.0	1.0	0.0
	Ocp	1.1	1.4	2.0	2.7	10.3	1.5	1.6	6.0	10.2	0.0

Legend

Pro. Proportion of vehicles in % (Sum may not add up to 100% due to figure rounding)
Ocp. Average occupancy of vehicles
M&H Medium and Heavy