

YEAR 2007

LINK

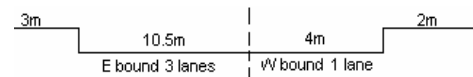
BOUNDARY ST (from TAI HANG TUNG RD to EMBANKMENT RD)

COVERAGE (B) STATION 4202

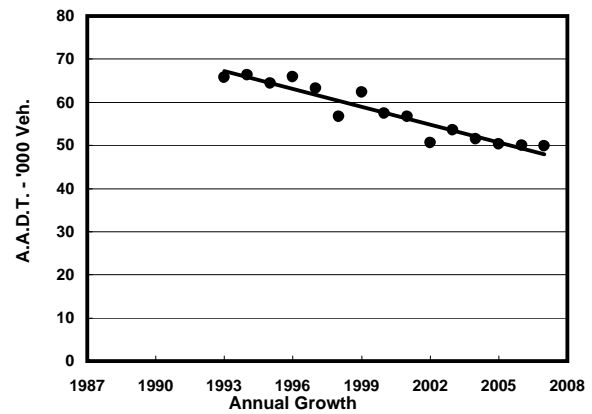
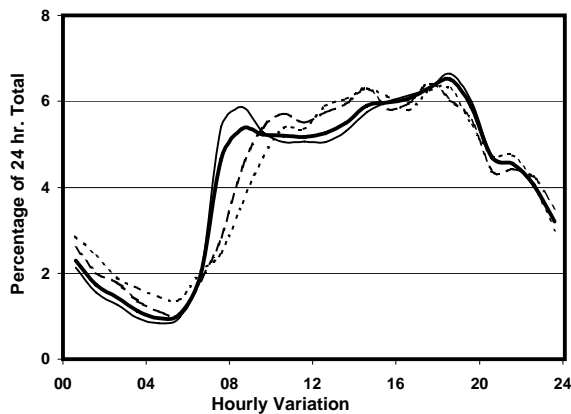
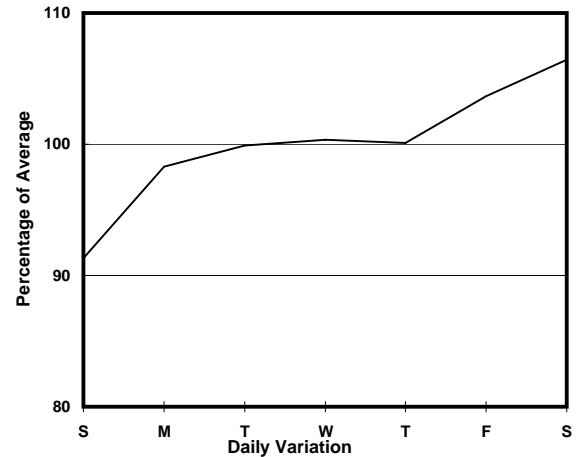
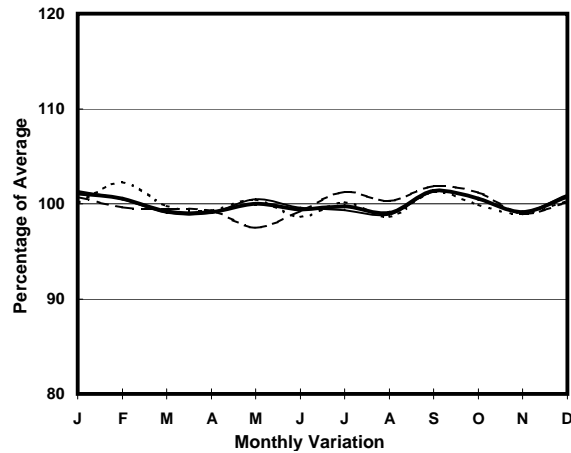
ROAD NETWORK MAJOR

ROAD TYPE PRIMARY DISTRIBUTOR

BOUNDARY ST (from TAI HANG TUNG RD to EMBANKMENT RD)



### 1. TRAFFIC FLOW VARIATION AND GROWTH



— All day — Mon.- Fri. - - - - Sat. - - - - - Sun.

### 2. TRAFFIC CHARACTERISTICS (BY DIRECTION)

Parameter	All - Day	Mon. - Fri.	Sat.	Sun.
<b>EAST BOUND</b>				
A.A.D.T.	40950	41370	44090	37010
R 12 / 24 - %	67.1	67.8	66.4	64.2
R 16 / 24 - %	86.1	87	84.7	83
AM Peak Hour	0800-0900	0800-0900	0900-1000	0900-1000
One-way flow at AM peak hour	2190	2430	2360	1760
T - % (AM)	-	10.2	-	-
PM Peak Hour	1800-1900	1800-1900	1700-1800	1800-1900
One-way flow at PM peak hour	2680	2760	2820	2380
T - % (PM)	-	5.4	-	-
Prop.of commercial vehicles - 16 hr.	-	8.2	-	-
<b>WEST BOUND</b>				
A.A.D.T.	8900	8910	9220	8770
R 12 / 24 - %	67.3	68.3	65.2	64.7
R 16 / 24 - %	87	87.9	85.1	84.4
AM Peak Hour	0700-0800	0700-0800	0900-1000	0900-1000
One-way flow at AM peak hour	520	640	510	390
T - % (AM)	-	14.7	-	-
PM Peak Hour	1800-1900	1800-1900	1700-1800	1700-1800
One-way flow at PM peak hour	570	580	600	540
T - % (PM)	-	4	-	-
Prop.of commercial vehicles - 16 hr.	-	7.9	-	-

### 3. OTHER INFORMATION AND COMMENT

**4. Vehicle classification and occupancy - Monday to Friday**

Time		Class of vehicle									
		Motor	Private	Taxi	Private	PLB	Goods veh.		Non	Fr. Bus	
		Cycle	Car		LB		Light	M & H	Fr. Bus	SD	DD
0700-0800	Pro	2.9	16.7	38.5	4.9	8.0	12.3	2.7	10.6	0.3	3.0
	Ocp	1.2	1.6	2.2	6.7	11.5	1.7	2.0	15.9	13.5	39.8
0800-0900	Pro	2.1	41.1	21.8	2.9	6.3	15.1	3.1	5.2	0.2	2.2
	Ocp	1.1	1.3	1.8	4.3	14.7	1.7	1.9	11.1	14.3	38.8
0900-1000	Pro	3.1	33.1	27.3	1.6	4.9	22.9	2.5	1.7	0.2	2.7
	Ocp	1.1	1.4	1.7	2.8	8.8	1.7	1.9	2.7	8.6	18.8
1000-1100	Pro	1.9	27.7	28.6	0.9	5.6	28.0	2.6	1.9	0.3	2.6
	Ocp	1.0	1.5	1.6	2.2	6.5	1.6	1.5	6.1	6.9	14.4
1100-1200	Pro	2.3	30.3	28.2	2.0	5.3	25.5	1.8	2.1	0.3	2.3
	Ocp	1.0	1.5	1.7	2.1	7.0	1.6	1.3	2.6	10.0	20.5
1200-1300	Pro	2.7	31.9	27.6	1.7	4.6	22.0	2.2	4.9	0.2	2.3
	Ocp	1.0	1.5	1.8	2.2	8.8	1.7	1.5	7.7	8.2	22.4
1300-1400	Pro	2.8	30.0	37.2	2.4	5.6	11.0	2.7	5.0	0.3	3.0
	Ocp	1.0	1.6	1.7	3.4	8.8	2.0	1.7	6.9	8.0	22.0
1400-1500	Pro	2.4	32.8	25.7	2.7	5.1	23.0	2.7	3.1	0.2	2.3
	Ocp	1.1	1.5	1.9	2.3	8.1	1.6	1.4	1.4	7.9	23.9
1500-1600	Pro	3.0	36.3	21.3	3.0	4.7	21.5	3.1	4.5	0.2	2.4
	Ocp	1.2	1.5	1.9	4.9	10.7	1.6	1.4	14.3	12.9	33.1
1600-1700	Pro	3.6	35.1	27.1	2.6	5.0	17.1	2.2	4.8	0.2	2.3
	Ocp	1.2	1.4	1.9	2.8	10.5	1.6	1.6	4.5	18.0	44.0
1700-1800	Pro	3.3	37.5	27.7	1.1	5.2	15.1	1.5	5.3	0.2	2.8
	Ocp	1.0	1.5	1.9	2.7	12.5	1.6	1.6	2.6	10.4	49.7
1800-1900 Peak hour	Pro	4.3	42.3	25.6	1.3	5.8	15.6	0.9	1.5	0.2	2.6
	Ocp	1.2	1.5	2.1	4.2	16.4	1.7	1.4	10.2	15.0	58.5
1900-2000	Pro	3.8	48.3	29.0	0.2	4.8	9.6	0.5	1.3	0.1	2.5
	Ocp	1.1	1.6	2.0	2.0	15.2	1.6	1.3	5.4	12.0	51.4
2000-2100	Pro	4.6	43.2	34.7	0.1	3.6	9.9	0.6	0.4	0.2	2.6
	Ocp	1.2	1.6	2.0	1.0	12.6	1.7	1.8	42.0	7.8	48.8
2100-2200	Pro	4.0	40.1	38.6	0.6	6.1	5.8	0.8	0.6	0.2	3.0
	Ocp	1.2	1.7	2.3	4.0	11.1	1.6	1.8	1.3	4.6	40.6
2200-2300	Pro	5.1	42.8	34.5	0.4	6.2	4.5	1.3	1.3	0.4	3.7
	Ocp	1.3	1.8	2.1	4.0	8.2	1.8	1.7	2.4	5.0	38.0
16 hours	Pro	3.2	36.0	29.0	1.8	5.4	16.4	2.0	3.4	0.2	2.6
	Ocp	1.1	1.5	1.9	3.7	11.0	1.7	1.6	8.4	10.3	36.1

**Legend**

**Pro.** Proportion of vehicles in % (Sum may not add up to 100% due to figure rounding)  
**Ocp.** Average occupancy of vehicles  
**M&H** Medium and Heavy