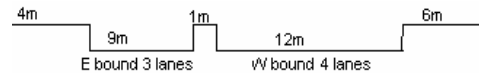


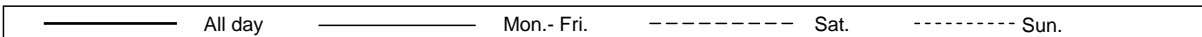
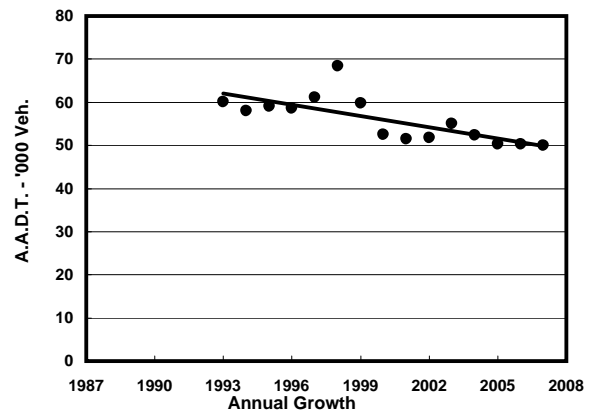
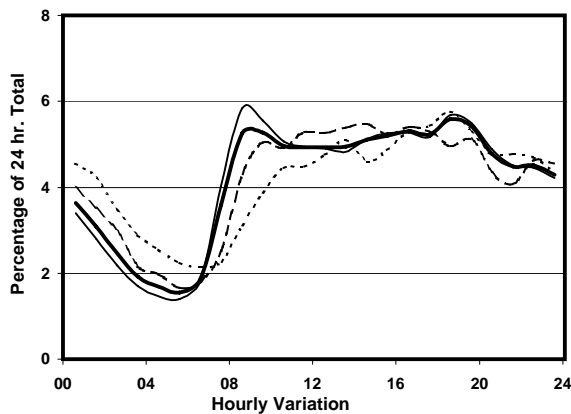
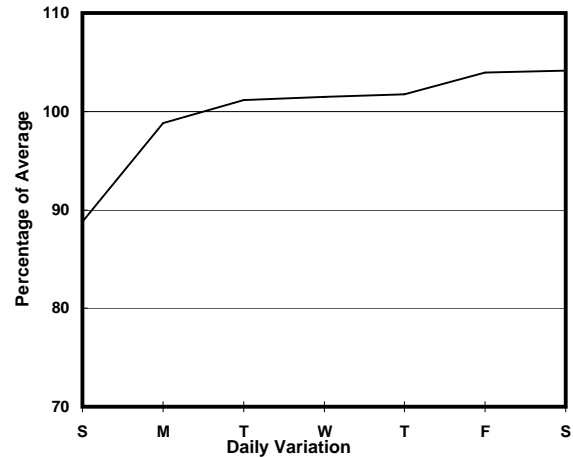
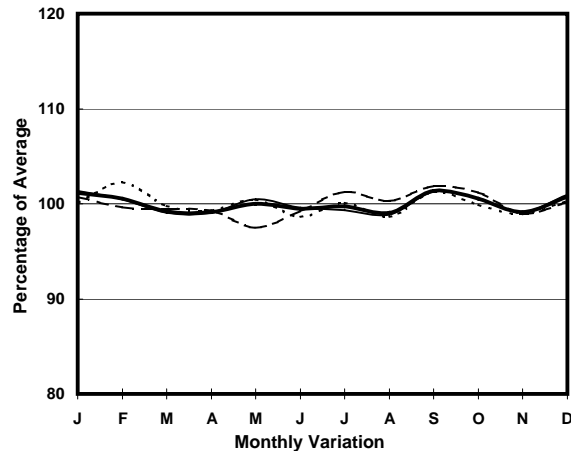
YEAR 2007

LINK ARGYLE ST & FO <K13> (from WATERLOO RD to YIM
PO FONG ST)

COVERAGE (B) STATION 4204
ROAD NETWORK MAJOR
ROAD TYPE PRIMARY DISTRIBUTOR



1. TRAFFIC FLOW VARIATION AND GROWTH



2. TRAFFIC CHARACTERISTICS (BY DIRECTION)

Parameter	All - Day	Mon. - Fri.	Sat.	Sun.
EAST BOUND				
A.A.D.T.	25680	26160	26950	23060
R 12 / 24 - %	58.2	59.7	56.4	51.5
R 16 / 24 - %	77.4	79.1	74.5	70.9
AM Peak Hour	0900-1000	0800-0900	0900-1000	0900-1000
One-way flow at AM peak hour	1300	1460	1270	880
T - % (AM)	-	14.3	-	-
PM Peak Hour	1800-1900	1800-1900	1800-1900	1800-1900
One-way flow at PM peak hour	1400	1450	1360	1230
T - % (PM)	-	7.8	-	-
Prop.of commercial vehicles - 16 hr.	-	9.6	-	-
WEST BOUND				
A.A.D.T.	24400	24920	25540	21710
R 12 / 24 - %	62.6	63.7	62	56.8
R 16 / 24 - %	81.8	83	80.3	76.4
AM Peak Hour	0800-0900	0800-0900	0900-1000	0900-1000
One-way flow at AM peak hour	1340	1530	1390	850
T - % (AM)	-	6.3	-	-
PM Peak Hour	1800-1900	1800-1900	1600-1700	1800-1900
One-way flow at PM peak hour	1400	1460	1490	1350
T - % (PM)	-	6.4	-	-
Prop.of commercial vehicles - 16 hr.	-	7.8	-	-

3. OTHER INFORMATION AND COMMENT

4. Vehicle classification and occupancy - Monday to Friday

Time		Class of vehicle									
		Motor	Private	Taxi	Private	PLB	Goods veh.		Non	Fr. Bus	
		Cycle	Car		LB		Light	M & H	Fr. Bus	SD	DD
0700-0800	Pro	1.8	10.0	40.0	2.5	15.7	15.2	1.8	4.8	0.0	8.2
	Ocp	1.1	1.5	2.1	7.1	8.3	1.6	1.6	9.1	0.0	38.7
0800-0900	Pro	1.1	37.6	27.5	1.3	10.8	11.5	1.7	3.6	0.0	4.9
	Ocp	1.1	1.6	1.9	5.8	10.8	1.6	1.7	19.8	0.0	39.8
0900-1000	Pro	2.0	18.4	28.1	1.4	12.4	26.6	4.0	0.5	0.0	6.6
	Ocp	1.1	1.4	1.9	4.3	7.5	1.7	1.6	12.3	0.0	23.2
1000-1100	Pro	2.0	18.8	32.6	0.7	10.9	25.9	2.2	0.7	0.0	6.2
	Ocp	1.3	1.4	1.8	2.0	6.8	1.6	1.7	5.3	0.0	23.1
1100-1200	Pro	2.3	21.7	34.8	1.0	10.2	21.8	2.6	0.7	0.0	4.9
	Ocp	1.0	1.4	2.0	3.2	7.4	1.5	1.7	2.0	0.0	27.3
1200-1300	Pro	2.2	23.4	33.8	0.9	12.2	18.4	1.2	2.3	0.0	5.6
	Ocp	1.1	1.6	1.8	3.3	8.3	1.5	2.6	6.9	0.0	28.6
1300-1400	Pro	1.7	24.6	27.7	0.5	13.2	23.2	1.6	1.9	0.0	5.6
	Ocp	1.2	1.6	2.0	4.7	8.8	1.6	1.6	2.4	0.0	31.4
1400-1500	Pro	3.1	25.9	28.1	1.1	12.2	20.7	2.6	1.4	0.0	5.0
	Ocp	1.1	1.6	2.0	2.1	8.7	1.6	1.6	1.7	0.0	29.4
1500-1600	Pro	3.4	21.6	28.5	1.7	12.1	22.3	2.5	2.5	0.1	5.4
	Ocp	1.2	1.4	2.0	3.4	10.2	1.6	1.5	13.9	1.0	36.7
1600-1700	Pro	4.4	27.4	22.2	0.3	12.7	23.4	2.4	1.3	0.0	6.0
	Ocp	1.1	1.5	2.1	1.5	11.0	1.6	1.5	1.6	0.0	40.4
1700-1800	Pro	5.1	22.1	37.1	1.0	12.8	15.8	0.1	0.0	0.0	5.9
	Ocp	1.1	1.4	1.7	2.3	12.8	1.6	2.0	0.0	0.0	42.7
1800-1900	Pro	4.9	28.1	32.1	0.7	17.4	9.7	0.7	1.0	0.0	5.3
	Ocp	1.1	1.6	1.9	2.6	15.0	1.6	1.8	14.6	0.0	45.5
1900-2000	Pro	3.2	28.5	39.1	0.0	16.8	5.9	0.4	0.7	0.0	5.4
	Ocp	1.0	1.6	2.0	0.0	14.1	1.5	1.3	5.8	0.0	48.7
2000-2100	Pro	1.5	33.9	35.2	0.5	16.9	6.1	0.5	0.5	0.0	4.8
	Ocp	1.3	1.6	1.9	1.3	13.2	1.8	1.3	3.7	0.0	41.5
2100-2200	Pro	1.8	31.6	40.3	0.5	14.0	4.6	0.9	0.7	0.0	5.6
	Ocp	1.4	1.9	1.9	3.3	13.6	1.6	2.0	13.5	0.0	31.4
2200-2300	Pro	1.7	30.2	36.6	0.0	20.1	4.1	0.2	0.0	0.0	7.0
	Ocp	1.0	1.8	1.9	0.0	13.2	1.7	3.0	0.0	0.0	27.1
16 hours	Pro	2.7	25.7	32.5	0.9	13.7	15.9	1.6	1.4	0.1	5.7
	Ocp	1.1	1.6	1.9	3.9	11.1	1.6	1.7	10.1	1.0	34.8

Legend

- Pro.** Proportion of vehicles in % (Sum may not add up to 100% due to figure rounding)
- Ocp.** Average occupancy of vehicles
- M&H** Medium and Heavy