

YEAR

2007

LINK WATERLOO RD (from YIM PO FONG ST to PUI CHING RD)

COVERAGE (B) STATION

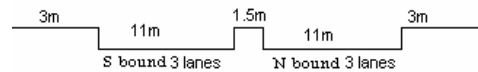
4205

ROAD NETWORK

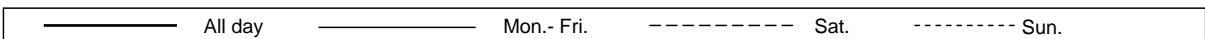
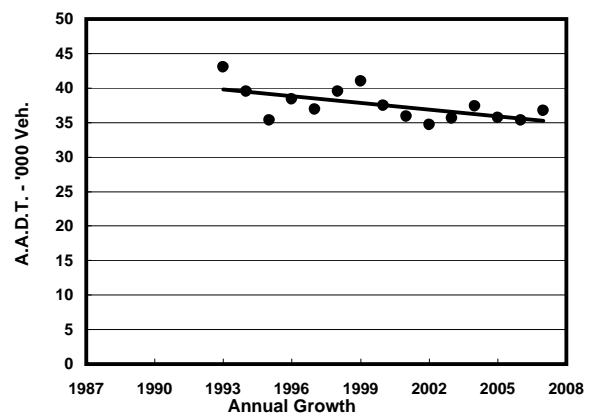
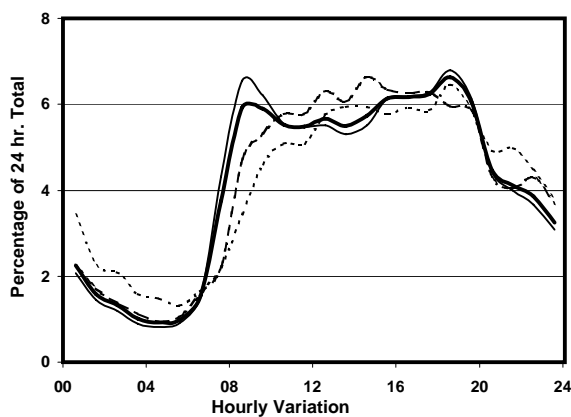
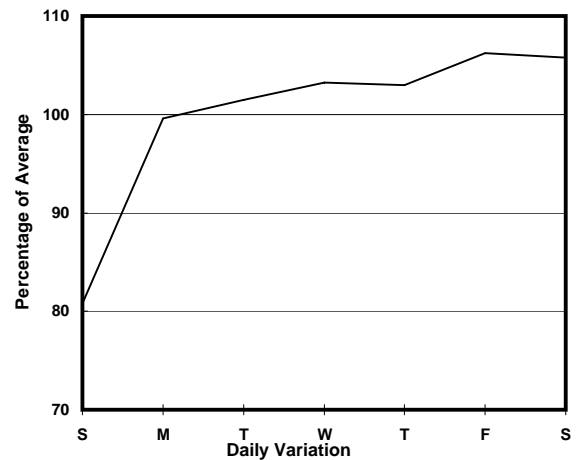
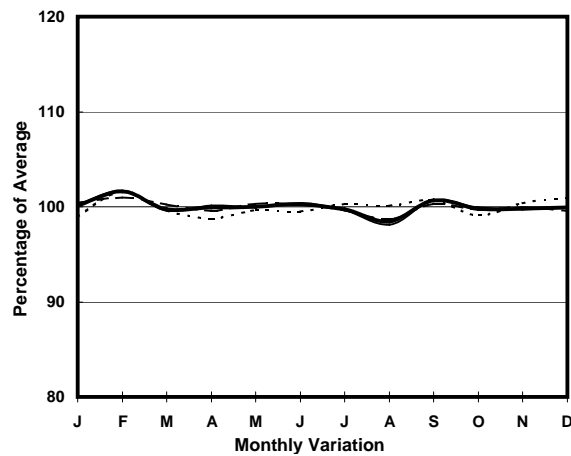
MAJOR

ROAD TYPE

PRIMARY DISTRIBUTOR



## 1. TRAFFIC FLOW VARIATION AND GROWTH



## 2. TRAFFIC CHARACTERISTICS (BY DIRECTION)

Parameter	All - Day	Mon. - Fri.	Sat.	Sun.
<b>SOUTH BOUND</b>				
A.A.D.T.	14740	15570	15500	10850
R 12 / 24 - %	73.8	74.8	73.9	66.5
R 16 / 24 - %	90.2	90.8	89.6	86.1
AM Peak Hour	0800-0900	0800-0900	0900-1000	0900-1000
One-way flow at AM peak hour	1060	1230	930	610
T - % (AM)	-	9.1	-	-
PM Peak Hour	1800-1900	1800-1900	1600-1700	1800-1900
One-way flow at PM peak hour	1020	1110	1040	690
T - % (PM)	-	4.9	-	-
Prop.of commercial vehicles - 16 hr.	-	8.7	-	-

<b>NORTH BOUND</b>				
A.A.D.T.	22000	22550	23770	19140
R 12 / 24 - %	65.2	66.4	63.7	59.7
R 16 / 24 - %	85.1	86.1	84	80.2
AM Peak Hour	0900-1000	0800-0900	0900-1000	0900-1000
One-way flow at AM peak hour	1160	1270	1160	770
T - % (AM)	-	7.1	-	-
PM Peak Hour	1800-1900	1800-1900	1700-1800	1800-1900
One-way flow at PM peak hour	1420	1480	1520	1250
T - % (PM)	-	4.9	-	-
Prop.of commercial vehicles - 16 hr.	-	5.6	-	-

## 3. OTHER INFORMATION AND COMMENT

**4. Vehicle classification and occupancy - Monday to Friday**

Time		Class of vehicle									
		Motor	Private	Taxi	Private	PLB	Goods veh.		Non	Fr. Bus	
		Cycle	Car		LB		Light	M & H	Fr. Bus	SD	DD
0700-0800	Pro	3.3	13.9	51.8	3.0	4.7	11.5	1.5	4.7	0.6	5.0
	Ocp	1.3	1.5	2.2	7.4	7.6	1.4	1.2	7.8	8.9	35.7
0800-0900	Pro	1.6	38.8	38.0	1.7	3.1	8.8	1.7	2.8	0.3	3.2
	Ocp	1.0	1.4	2.0	3.3	14.8	1.6	1.5	13.2	16.6	46.5
0900-1000	Pro	1.6	31.0	36.9	2.3	2.3	19.5	1.9	0.5	0.3	3.7
	Ocp	1.0	1.4	1.9	3.0	7.4	1.6	1.3	11.0	9.7	27.2
1000-1100	Pro	1.2	27.5	41.7	1.4	1.4	21.3	0.8	1.0	0.3	3.5
	Ocp	1.0	1.5	1.9	1.6	8.3	1.5	1.5	1.8	10.3	26.3
1100-1200	Pro	3.4	27.5	35.3	2.8	1.4	22.7	2.2	1.0	0.4	3.3
	Ocp	1.2	1.4	1.9	2.3	6.1	1.6	1.5	1.4	12.4	28.4
1200-1300	Pro	2.3	29.4	42.2	2.5	2.7	15.1	0.6	1.3	0.4	3.4
	Ocp	1.2	1.5	1.9	4.3	3.1	1.5	1.0	9.5	8.8	25.6
1300-1400	Pro	1.4	30.4	39.1	1.4	2.2	17.3	2.6	1.2	0.3	3.9
	Ocp	1.0	1.4	1.9	2.0	12.5	1.6	1.8	5.2	11.3	24.6
1400-1500	Pro	2.5	33.1	32.7	2.3	1.4	20.3	2.7	1.0	0.4	3.7
	Ocp	1.0	1.6	1.9	2.0	11.9	1.7	1.4	4.4	9.7	28.1
1500-1600	Pro	1.1	37.0	37.9	2.0	1.4	13.3	1.6	2.0	0.4	3.3
	Ocp	1.0	1.5	1.9	3.8	6.9	1.5	1.4	4.4	14.0	24.7
1600-1700	Pro	1.5	34.8	37.5	2.4	2.0	12.7	0.8	4.6	0.3	3.5
	Ocp	1.1	1.5	1.9	3.6	13.5	1.6	1.0	10.7	8.1	26.6
1700-1800	Pro	2.3	38.5	35.5	1.8	2.3	12.7	0.5	2.8	0.4	3.2
	Ocp	1.1	1.5	1.7	1.2	7.1	1.6	1.0	9.8	13.4	28.0
1800-1900 Peak hour	Pro	2.3	44.4	36.5	0.6	2.3	9.0	0.6	0.8	0.3	3.1
	Ocp	1.0	1.5	2.1	7.0	14.3	1.8	1.0	11.2	17.0	47.8
1900-2000	Pro	1.0	47.5	39.7	0.2	3.0	4.2	0.5	0.9	0.3	2.7
	Ocp	1.0	1.6	2.1	1.0	16.0	1.4	2.0	12.4	12.6	44.9
2000-2100	Pro	1.7	41.9	42.6	0.2	2.4	6.1	0.0	0.5	0.4	4.1
	Ocp	1.4	1.5	1.9	1.0	12.3	1.4	0.0	1.0	9.1	35.3
2100-2200	Pro	4.4	43.3	37.3	0.3	2.4	4.2	1.6	1.8	0.5	4.2
	Ocp	1.3	1.7	2.0	2.0	13.4	1.6	1.0	3.9	6.4	25.9
2200-2300	Pro	2.6	40.1	44.4	0.0	3.7	2.8	0.0	0.6	0.5	5.3
	Ocp	1.1	1.6	1.9	0.0	11.3	2.2	0.0	1.0	5.6	31.0
16 hours	Pro	2.0	35.4	38.8	1.6	2.4	12.9	1.2	1.7	0.4	3.6
	Ocp	1.1	1.5	1.9	3.3	10.8	1.6	1.4	8.4	11.0	31.7

**Legend**

**Pro.** Proportion of vehicles in % (Sum may not add up to 100% due to figure rounding)  
**Ocp.** Average occupancy of vehicles  
**M&H** Medium and Heavy