

YEAR 2007

LINK

CORNWALL ST (from WATERLOO RD to NAM CHEONG ST)

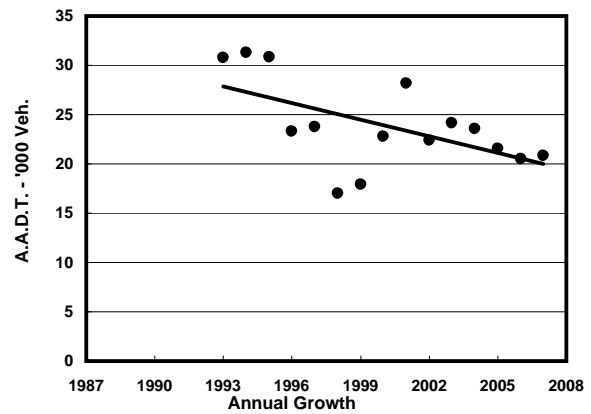
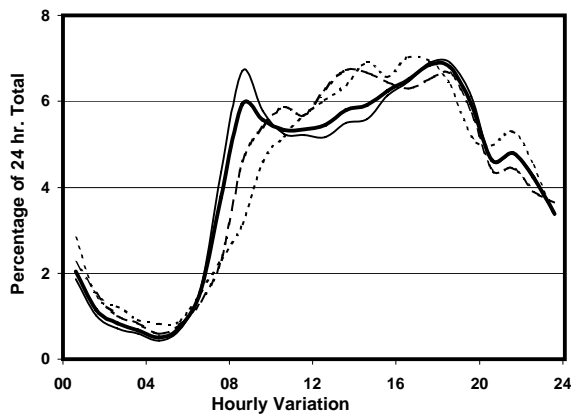
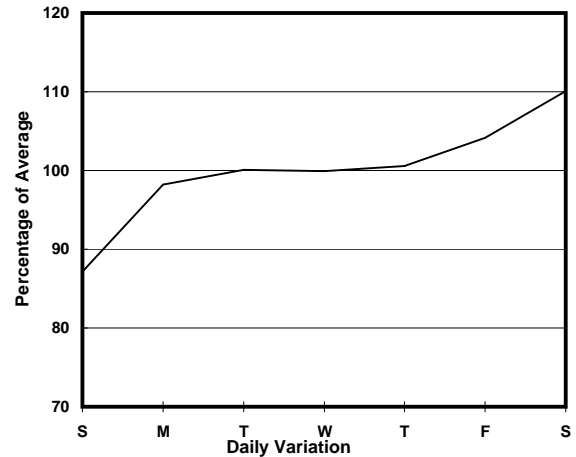
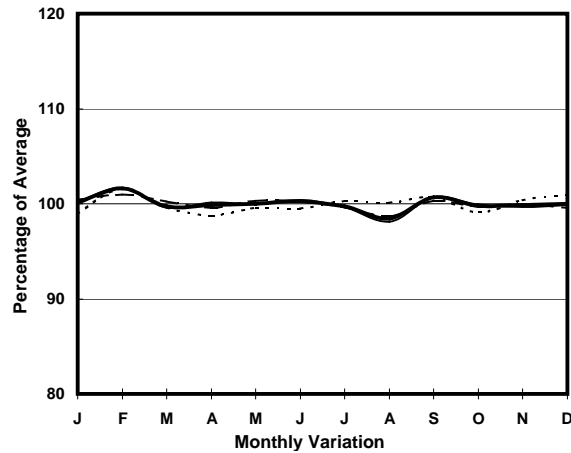
COVERAGE (B) STATION 4206

ROAD NETWORK MAJOR

ROAD TYPE DISTRICT DISTRIBUTOR



1. TRAFFIC FLOW VARIATION AND GROWTH



— All day — Mon.- Fri. - - - - - Sat. - - - - - Sun.

2. TRAFFIC CHARACTERISTICS (BY DIRECTION)

Parameter	All - Day	Mon. - Fri.	Sat.	Sun.
EAST BOUND				
A.A.D.T.	9730	9720	10830	9160
R 12 / 24 - %	69.2	69.3	69.1	68.8
R 16 / 24 - %	88.2	88.8	86.8	87.3
AM Peak Hour	0900-1000	0800-0900	0900-1000	0900-1000
One-way flow at AM peak hour	580	630	700	520
T - % (AM)	-	17.9	-	-
PM Peak Hour	1800-1900	1800-1900	1800-1900	1600-1700
One-way flow at PM peak hour	680	720	660	620
T - % (PM)	-	8.3	-	-
Prop.of commercial vehicles - 16 hr.	-	12	-	-
WEST BOUND				
A.A.D.T.	11120	11390	12270	9130
R 12 / 24 - %	69.8	70.5	69.8	65.4
R 16 / 24 - %	89.9	90.6	89	86.9
AM Peak Hour	0800-0900	0800-0900	0900-1000	0900-1000
One-way flow at AM peak hour	660	780	550	320
T - % (AM)	-	9.6	-	-
PM Peak Hour	1700-1800	1700-1800	1700-1800	1700-1800
One-way flow at PM peak hour	820	840	890	730
T - % (PM)	-	6	-	-
Prop.of commercial vehicles - 16 hr.	-	10.4	-	-

3. OTHER INFORMATION AND COMMENT

4. Vehicle classification and occupancy - Monday to Friday

Time		Class of vehicle									
		Motor	Private	Taxi	Private	PLB	Goods veh.		Non	Fr. Bus	
		Cycle	Car		LB		Light	M & H	Fr. Bus	SD	DD
0700-0800	Pro	3.0	40.1	21.3	2.1	0.0	6.8	3.4	18.8	0.4	4.1
	Ocp	1.1	1.8	2.0	6.2	0.0	1.6	1.1	11.8	3.8	44.7
0800-0900	Pro	2.8	54.0	16.0	0.7	0.0	12.7	1.6	9.9	0.1	2.3
	Ocp	1.0	1.6	1.9	4.7	0.0	1.7	1.9	19.2	9.0	54.1
0900-1000	Pro	3.8	56.5	15.2	0.5	0.0	13.6	2.4	4.6	0.0	3.3
	Ocp	1.0	1.3	1.8	2.5	0.0	1.7	1.4	26.3	0.0	32.3
1000-1100	Pro	1.7	38.8	21.1	2.1	0.4	25.2	5.0	2.5	0.0	3.4
	Ocp	1.0	1.5	1.7	2.0	1.0	1.7	1.8	2.2	0.0	27.7
1100-1200	Pro	2.7	38.4	25.2	1.3	0.4	19.9	4.9	4.0	0.0	3.3
	Ocp	1.2	1.4	1.9	1.7	1.0	1.8	1.1	8.6	0.0	26.9
1200-1300	Pro	2.5	46.3	18.1	1.4	0.0	17.4	2.2	9.0	0.0	3.1
	Ocp	1.0	1.7	1.8	7.0	0.0	1.9	1.3	14.5	0.0	35.3
1300-1400	Pro	3.1	44.4	18.4	2.7	0.0	17.6	4.2	6.5	0.1	3.1
	Ocp	1.1	1.8	1.7	4.4	0.0	1.7	1.2	14.9	1.0	35.2
1400-1500	Pro	3.5	36.0	25.1	2.3	0.0	20.9	3.9	5.4	0.0	2.9
	Ocp	1.0	1.4	1.6	1.3	0.0	1.7	1.5	4.9	0.0	26.6
1500-1600	Pro	1.5	50.7	16.7	3.1	0.0	16.1	3.7	5.9	0.0	2.4
	Ocp	1.0	1.6	1.9	3.6	0.0	1.8	1.2	11.1	0.0	31.9
1600-1700	Pro	4.3	44.2	24.4	3.4	0.0	14.9	1.2	5.0	0.0	2.6
	Ocp	1.1	1.6	1.9	4.7	0.0	1.8	1.5	6.6	0.0	43.8
1700-1800 Peak hour	Pro	3.8	55.0	18.9	0.8	0.0	12.3	1.1	5.5	0.0	2.7
	Ocp	1.1	1.5	1.8	6.7	0.0	1.6	1.0	6.2	0.0	44.4
1800-1900	Pro	5.1	54.7	22.1	0.9	0.0	9.4	0.6	4.2	0.0	3.0
	Ocp	1.2	1.6	2.0	1.3	0.0	1.5	1.5	8.9	0.0	62.8
1900-2000	Pro	4.7	60.9	20.5	0.0	0.0	6.4	0.0	4.4	0.0	3.1
	Ocp	1.1	1.6	1.9	0.0	0.0	1.3	0.0	11.4	0.0	45.3
2000-2100	Pro	4.3	50.8	30.8	0.0	0.9	6.9	0.9	2.2	0.0	3.3
	Ocp	1.0	1.5	1.9	0.0	1.0	1.8	1.5	11.0	0.0	35.1
2100-2200	Pro	3.3	53.0	30.4	0.4	0.0	6.6	1.2	1.6	0.0	3.4
	Ocp	1.1	1.7	2.1	1.0	0.0	1.9	1.3	6.3	0.0	38.3
2200-2300	Pro	3.9	60.5	26.9	1.1	0.0	1.1	1.1	0.6	0.1	4.6
	Ocp	1.1	1.6	1.7	3.5	0.0	1.5	1.0	1.0	1.0	30.7
16 hours	Pro	3.4	49.6	21.2	1.4	0.1	13.1	2.2	5.8	0.1	3.1
	Ocp	1.1	1.6	1.9	3.9	1.0	1.7	1.4	12.6	3.7	39.1

Legend

- Pro.** Proportion of vehicles in % (Sum may not add up to 100% due to figure rounding)
- Ocp.** Average occupancy of vehicles
- M&H** Medium and Heavy