

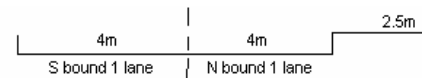
YEAR 2007

COVERAGE (B) STATION 4207

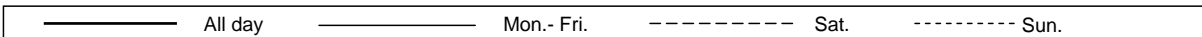
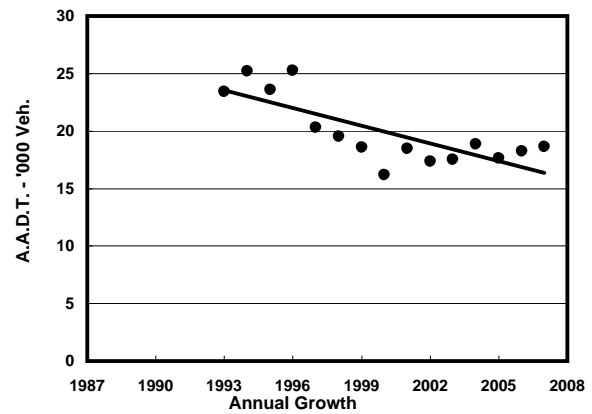
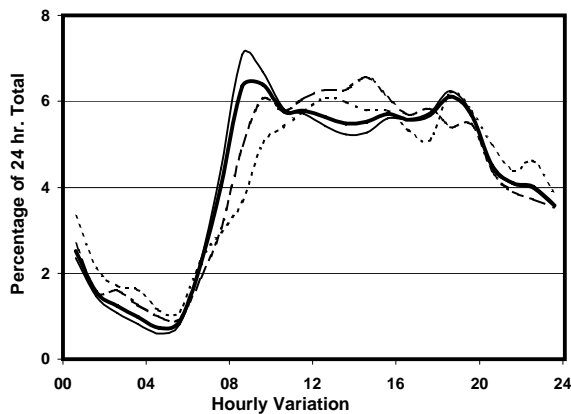
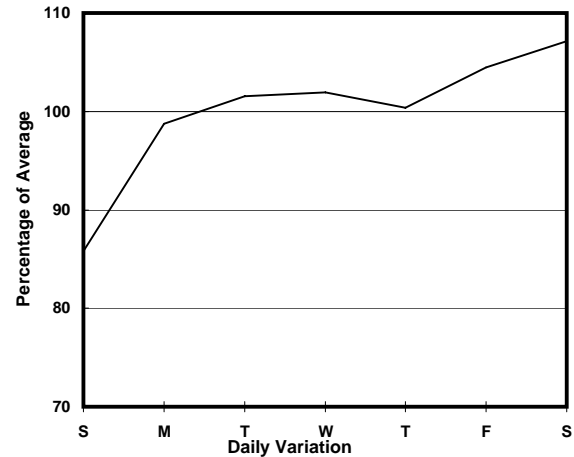
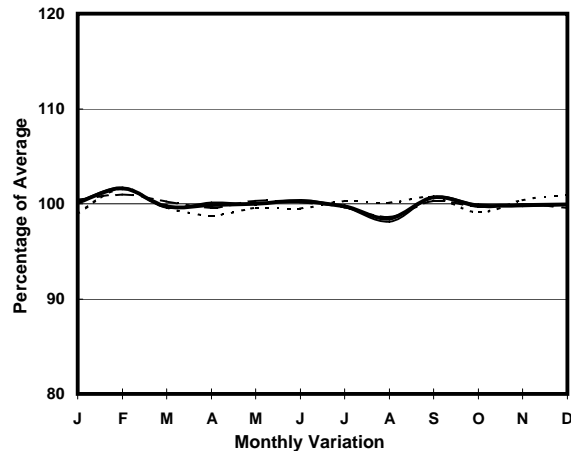
ROAD NETWORK MAJOR

ROAD TYPE DISTRICT DISTRIBUTOR

LINK CHEONG WAN RD & GILLIES AVE S (from RAILWAY TERMINUS to WUHU ST)



### 1. TRAFFIC FLOW VARIATION AND GROWTH



### 2. TRAFFIC CHARACTERISTICS (BY DIRECTION)

Parameter	All - Day	Mon. - Fri.	Sat.	Sun.
<b>SOUTH BOUND</b>				
A.A.D.T.	7970	8270	8700	6130
R 12 / 24 - %	71	72.2	71.3	62.5
R 16 / 24 - %	88.4	89.4	87.5	82.8
AM Peak Hour	0900-1000	0800-0900	0900-1000	0900-1000
One-way flow at AM peak hour	500	580	520	290
T - % (AM)	-	12.9	-	-
PM Peak Hour	1700-1800	1800-1900	1700-1800	1800-1900
One-way flow at PM peak hour	550	590	650	400
T - % (PM)	-	9.6	-	-
Prop.of commercial vehicles - 16 hr.	-	10.3	-	-
<b>NORTH BOUND</b>				
A.A.D.T.	10670	10780	11430	9990
R 12 / 24 - %	65.8	66.3	65.6	63.5
R 16 / 24 - %	84.8	85.3	84	82.9
AM Peak Hour	0800-0900	0800-0900	0900-1000	0900-1000
One-way flow at AM peak hour	700	780	700	520
T - % (AM)	-	10	-	-
PM Peak Hour	1800-1900	1800-1900	1800-1900	1800-1900
One-way flow at PM peak hour	600	600	600	610
T - % (PM)	-	4.3	-	-
Prop.of commercial vehicles - 16 hr.	-	5.6	-	-

### 3. OTHER INFORMATION AND COMMENT

**4. Vehicle classification and occupancy - Monday to Friday**

Time		Class of vehicle									
		Motor	Private	Taxi	Private	PLB	Goods veh.		Non	Fr. Bus	
		Cycle	Car		LB		Light	M & H	Fr. Bus	SD	DD
0700-0800	Pro	0.5	6.0	59.9	0.5	19.1	4.5	0.0	3.5	0.0	5.9
	Ocp	1.0	1.3	1.5	1.0	13.3	1.4	0.0	3.4	0.0	21.0
0800-0900 Peak hour	Pro	1.8	11.7	55.7	0.3	14.1	5.3	1.8	5.9	0.0	3.6
	Ocp	1.2	1.6	1.7	4.0	14.5	1.5	1.8	10.4	0.0	33.2
0900-1000	Pro	1.5	12.1	49.8	1.9	12.4	11.1	0.9	5.9	0.1	4.4
	Ocp	1.0	1.5	1.7	3.2	15.3	1.5	1.3	4.7	1.0	18.9
1000-1100	Pro	1.2	14.6	45.9	2.0	13.1	17.4	0.8	1.2	0.0	3.9
	Ocp	1.0	1.5	1.8	2.0	14.1	1.8	1.5	1.3	0.0	17.0
1100-1200	Pro	2.3	13.1	47.3	0.4	12.0	18.0	1.9	1.5	0.0	3.5
	Ocp	1.2	1.6	1.6	1.0	13.8	2.1	1.6	2.3	0.0	17.0
1200-1300	Pro	0.4	19.1	41.7	0.9	16.2	14.9	0.0	2.6	0.0	4.3
	Ocp	1.0	1.7	1.6	2.0	13.7	1.6	0.0	5.3	0.0	15.2
1300-1400	Pro	1.6	12.8	50.5	0.8	16.3	11.3	1.6	1.9	0.0	3.3
	Ocp	1.0	1.6	1.6	2.5	11.5	1.6	1.8	4.0	0.0	12.6
1400-1500	Pro	0.4	11.9	51.4	1.2	10.3	16.1	1.2	3.3	0.0	4.1
	Ocp	1.0	1.5	2.0	3.0	12.0	1.7	2.0	16.5	0.0	17.4
1500-1600	Pro	0.4	19.7	38.2	0.8	13.0	20.1	0.8	3.5	0.0	3.5
	Ocp	1.0	1.7	1.9	1.0	14.8	1.7	2.5	4.1	0.0	17.2
1600-1700	Pro	0.0	21.1	41.5	0.7	14.2	17.5	0.0	1.1	0.0	4.0
	Ocp	0.0	1.6	1.9	2.0	13.1	1.7	0.0	1.3	0.0	18.4
1700-1800	Pro	3.0	17.8	44.2	1.1	13.0	13.0	0.7	2.6	0.0	4.5
	Ocp	1.0	1.3	1.9	1.3	14.9	1.8	2.0	5.4	0.0	15.4
1800-1900	Pro	1.4	18.4	51.6	0.3	11.4	9.7	0.0	3.1	0.0	4.0
	Ocp	1.3	1.3	1.9	1.0	16.1	1.4	0.0	9.2	0.0	36.0
1900-2000	Pro	0.8	31.4	47.9	0.0	9.7	4.4	0.4	2.0	0.0	3.3
	Ocp	1.0	1.6	2.1	0.0	16.2	2.0	1.0	1.2	0.0	23.2
2000-2100	Pro	0.5	21.9	50.7	0.0	17.2	1.9	0.0	4.2	0.0	3.7
	Ocp	1.0	1.6	1.9	0.0	14.2	1.5	0.0	4.4	0.0	9.9
2100-2200	Pro	1.7	18.3	54.8	0.6	16.6	1.1	0.0	1.7	0.0	5.3
	Ocp	1.0	1.8	1.8	3.0	14.3	1.5	0.0	1.7	0.0	7.1
2200-2300	Pro	1.6	16.8	53.0	0.0	21.7	1.1	0.0	1.1	0.0	4.7
	Ocp	1.0	1.7	1.9	0.0	12.1	1.5	0.0	3.0	0.0	6.8
16 hours	Pro	1.2	16.6	48.8	0.7	14.1	10.9	0.7	3.0	0.1	4.1
	Ocp	1.1	1.6	1.8	2.2	13.9	1.7	1.8	6.2	1.0	18.5

**Legend**

- Pro.** Proportion of vehicles in % (Sum may not add up to 100% due to figure rounding)
- Ocp.** Average occupancy of vehicles
- M&H** Medium and Heavy