

YEAR

2007

LINK CHATHAM RD N (from WUHU ST to HONG CHONG RD)

COVERAGE (B) STATION

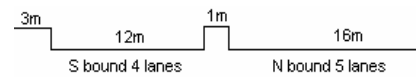
4208

ROAD NETWORK

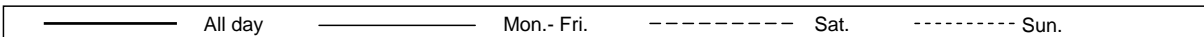
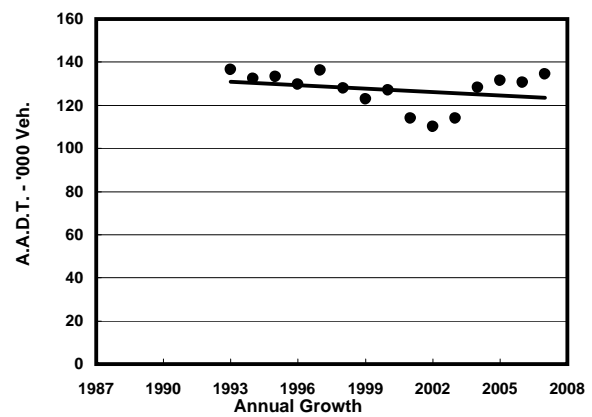
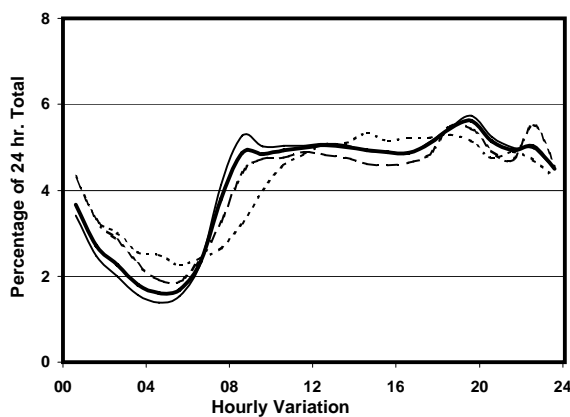
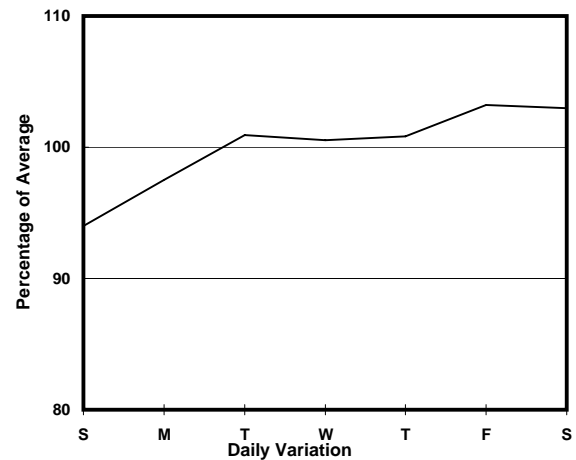
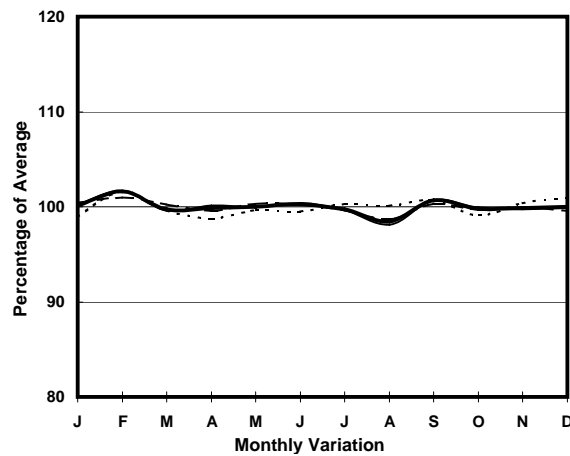
MAJOR

ROAD TYPE

PRIMARY DISTRIBUTOR



1. TRAFFIC FLOW VARIATION AND GROWTH



2. TRAFFIC CHARACTERISTICS (BY DIRECTION)

Parameter	All - Day	Mon. - Fri.	Sat.	Sun.
SOUTH BOUND				
A.A.D.T.	53720	53660	55200	53730
R 12 / 24 - %	56.1	57	51.6	56
R 16 / 24 - %	77.1	78.3	73.6	74.7
AM Peak Hour	0800-0900	0800-0900	0800-0900	0900-1000
One-way flow at AM peak hour	2800	2980	2820	2360
T - % (AM)	-	16.1	-	-
PM Peak Hour	1800-1900	1800-1900	1800-1900	1800-1900
One-way flow at PM peak hour	2620	2560	2770	2840
T - % (PM)	-	11.9	-	-
Prop.of commercial vehicles - 16 hr.	-	12.7	-	-
NORTH BOUND				
A.A.D.T.	80620	81900	83620	72990
R 12 / 24 - %	60.5	61.7	58.7	55.6
R 16 / 24 - %	81	82.5	78.3	75.7
AM Peak Hour	0900-1000	0900-1000	0900-1000	0900-1000
One-way flow at AM peak hour	3930	4200	3900	2730
T - % (AM)	-	16.2	-	-
PM Peak Hour	1800-1900	1800-1900	1800-1900	1600-1700
One-way flow at PM peak hour	4680	4820	4850	4090
T - % (PM)	-	13.2	-	-
Prop.of commercial vehicles - 16 hr.	-	14.8	-	-

3. OTHER INFORMATION AND COMMENT

4. Vehicle classification and occupancy - Monday to Friday

Time		Class of vehicle									
		Motor	Private	Taxi	Private	PLB	Goods veh.		Non	Fr. Bus	
		Cycle	Car		LB		Light	M & H	Fr. Bus	SD	DD
0700-0800	Pro	5.6	19.7	29.3	3.0	4.6	17.4	6.2	5.9	0.1	8.2
	Ocp	1.0	1.4	1.9	5.7	12.4	1.4	1.3	6.1	1.0	40.2
0800-0900	Pro	6.9	33.6	23.8	0.7	4.9	15.1	4.5	3.4	0.1	6.9
	Ocp	1.1	1.2	1.8	1.4	12.5	1.6	1.4	8.4	1.0	55.9
0900-1000	Pro	2.9	27.1	26.5	0.9	4.0	23.8	4.7	2.6	0.1	7.4
	Ocp	1.1	1.3	1.7	2.4	9.9	1.6	1.2	8.6	1.7	30.4
1000-1100	Pro	3.1	19.3	29.8	1.2	2.2	28.1	8.5	1.7	0.1	6.1
	Ocp	1.0	1.4	1.7	1.7	9.6	1.6	1.4	11.4	1.0	22.6
1100-1200	Pro	2.3	21.8	27.6	0.9	2.9	29.4	7.9	1.9	0.0	5.3
	Ocp	1.1	1.4	1.7	2.7	9.1	1.6	1.4	12.8	0.0	24.3
1200-1300	Pro	2.9	24.6	24.7	1.2	2.6	30.5	6.5	2.1	0.0	5.0
	Ocp	1.0	1.5	1.9	4.2	10.0	1.6	1.4	13.3	0.0	26.1
1300-1400	Pro	2.8	22.4	25.0	1.1	3.0	29.9	8.3	2.2	0.0	5.4
	Ocp	1.0	1.4	1.9	4.4	8.2	1.6	1.3	7.9	0.0	24.1
1400-1500	Pro	3.8	24.3	19.8	1.3	2.7	32.6	8.0	2.4	0.1	5.2
	Ocp	1.1	1.5	1.8	2.1	10.7	1.6	1.5	8.7	1.0	27.8
1500-1600	Pro	2.6	27.2	22.0	1.6	2.3	29.3	6.6	3.2	0.0	5.2
	Ocp	1.0	1.5	1.9	3.0	10.9	1.7	1.6	12.7	0.0	29.0
1600-1700	Pro	4.0	29.9	23.6	1.2	2.5	25.1	5.1	2.8	0.0	5.8
	Ocp	1.2	1.4	1.8	2.8	11.7	1.6	1.3	9.1	0.0	31.1
1700-1800	Pro	7.6	30.8	22.8	0.8	3.4	21.6	3.7	2.7	0.0	6.8
	Ocp	1.1	1.5	1.8	3.3	13.5	1.6	1.4	4.7	0.0	37.4
1800-1900	Pro	8.3	40.1	22.1	0.5	3.9	12.7	3.8	1.9	0.0	6.6
	Ocp	1.1	1.5	2.2	4.0	15.1	1.6	1.6	12.1	0.0	54.3
1900-2000	Pro	3.2	41.6	30.3	0.1	4.8	11.4	1.6	1.2	0.0	5.8
	Ocp	1.1	1.4	2.2	1.0	15.1	1.5	1.5	9.8	0.0	47.5
2000-2100	Pro	3.9	37.5	35.4	0.4	4.6	9.4	1.5	1.6	0.0	5.6
	Ocp	1.2	1.5	2.1	1.6	13.6	1.6	1.5	8.9	0.0	33.9
2100-2200	Pro	3.9	31.9	39.2	0.3	5.1	8.3	2.5	2.8	0.1	6.1
	Ocp	1.1	1.7	2.0	1.8	10.4	1.8	1.4	8.3	6.0	30.6
2200-2300	Pro	4.4	39.5	37.0	0.1	4.6	5.5	1.7	1.7	0.1	5.5
	Ocp	1.2	1.6	1.9	1.0	10.9	1.6	1.4	1.3	1.0	33.2
16 hours	Pro	4.2	29.7	27.4	0.9	3.6	20.6	5.0	2.5	0.1	6.0
	Ocp	1.1	1.5	1.9	3.3	11.8	1.6	1.4	8.8	2.3	35.1

Legend

- Pro.** Proportion of vehicles in % (Sum may not add up to 100% due to figure rounding)
- Ocp.** Average occupancy of vehicles
- M&H** Medium and Heavy