

YEAR

2007

LINK FAT KWONG ST (from CHUNG HAU ST to YAN FUNG ST)

COVERAGE (B) STATION

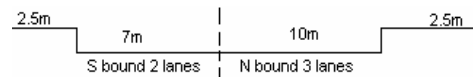
4211

ROAD NETWORK

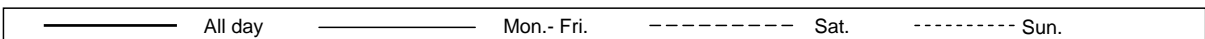
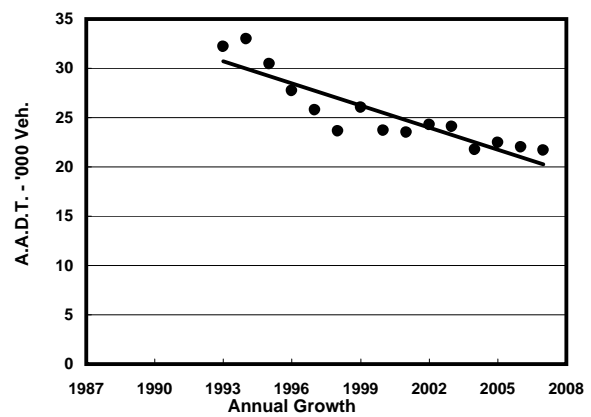
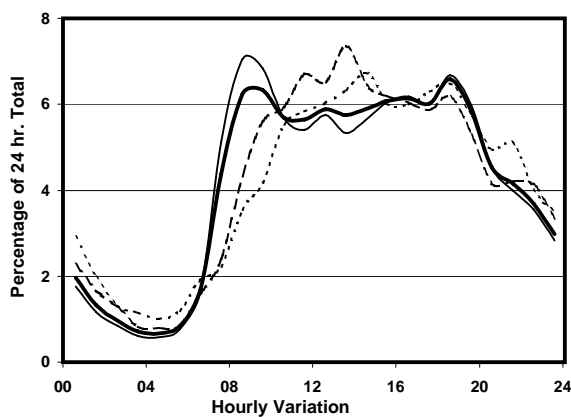
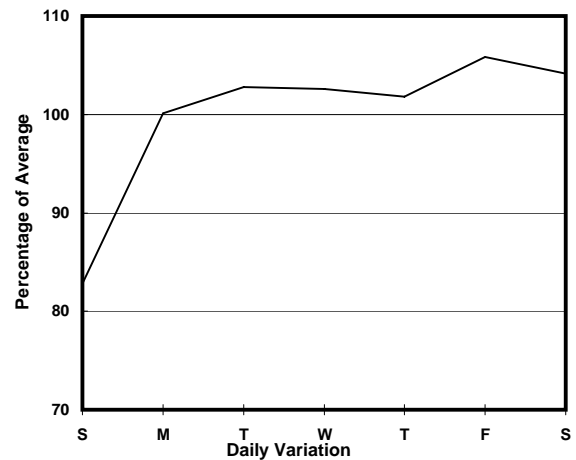
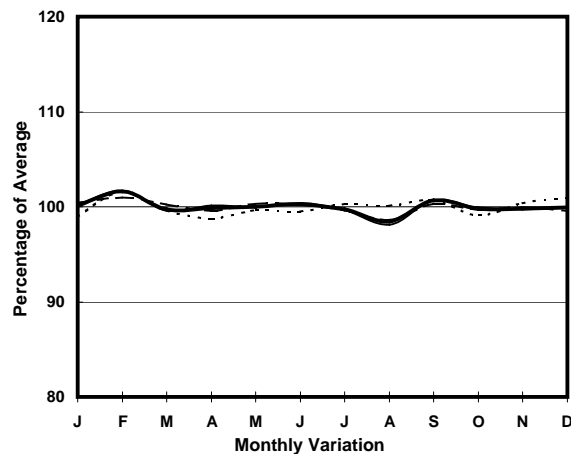
MAJOR

ROAD TYPE

DISTRICT DISTRIBUTOR



1. TRAFFIC FLOW VARIATION AND GROWTH



2. TRAFFIC CHARACTERISTICS (BY DIRECTION)

Parameter	All - Day	Mon. - Fri.	Sat.	Sun.
SOUTH BOUND				
A.A.D.T.	11540	11910	12400	9600
R 12 / 24 - %	72.6	73.6	72.1	66.7
R 16 / 24 - %	89.9	90.7	88.5	86.8
AM Peak Hour	0900-1000	0800-0900	0900-1000	0900-1000
One-way flow at AM peak hour	840	960	760	380
T - % (AM)	-	7.5	-	-
PM Peak Hour	1800-1900	1800-1900	1800-1900	1800-1900
One-way flow at PM peak hour	730	750	740	670
T - % (PM)	-	4.6	-	-
Prop.of commercial vehicles - 16 hr.	-	7.8	-	-

NORTH BOUND				
A.A.D.T.	10160	10570	10420	8540
R 12 / 24 - %	68.4	69.6	66.5	63.4
R 16 / 24 - %	87.7	88.8	85.9	83
AM Peak Hour	0800-0900	0800-0900	0900-1000	0900-1000
One-way flow at AM peak hour	540	630	520	380
T - % (AM)	-	8.3	-	-
PM Peak Hour	1800-1900	1800-1900	1600-1700	1700-1800
One-way flow at PM peak hour	700	750	690	520
T - % (PM)	-	5.1	-	-
Prop.of commercial vehicles - 16 hr.	-	7.2	-	-

3. OTHER INFORMATION AND COMMENT

4. Vehicle classification and occupancy - Monday to Friday

Time		Class of vehicle									
		Motor	Private	Taxi	Private	PLB	Goods veh.		Non	Fr. Bus	
		Cycle	Car		LB		Light	M & H	Fr. Bus	SD	DD
0700-0800	Pro	1.2	8.1	54.6	4.1	10.3	8.4	4.1	5.9	0.0	3.4
	Ocp	1.3	1.5	2.2	5.1	13.5	1.6	1.5	9.8	0.0	28.5
0800-0900	Pro	2.2	39.1	25.7	3.0	10.4	11.8	1.9	3.0	0.0	2.9
	Ocp	1.0	1.4	2.0	4.0	14.5	1.5	1.3	9.7	0.0	32.9
0900-1000	Pro	2.0	31.5	33.7	3.7	7.1	14.2	2.2	2.7	0.1	2.9
	Ocp	1.0	1.3	1.8	2.5	9.9	1.8	1.3	8.9	1.0	15.0
1000-1100	Pro	2.7	29.6	31.3	2.0	9.3	19.6	1.7	1.0	0.0	2.9
	Ocp	1.1	1.5	1.7	5.0	9.0	1.6	2.0	7.7	0.0	10.9
1100-1200	Pro	1.7	28.8	27.1	3.1	9.3	24.0	1.7	1.4	0.1	2.8
	Ocp	1.0	1.3	1.8	3.9	10.3	1.6	1.4	12.5	1.0	12.9
1200-1300	Pro	1.9	27.0	32.3	4.7	8.1	17.1	1.9	4.7	0.0	2.6
	Ocp	1.0	1.2	1.7	5.3	10.1	1.6	1.3	9.4	0.0	11.8
1300-1400	Pro	1.5	21.6	37.6	2.2	9.7	18.6	1.1	4.5	0.0	3.3
	Ocp	1.0	1.5	2.0	1.8	9.8	1.5	1.7	12.4	0.0	11.2
1400-1500	Pro	1.7	31.3	28.9	1.0	8.7	22.3	2.4	0.7	0.0	2.9
	Ocp	1.0	1.7	2.0	5.0	10.1	1.5	1.1	16.5	0.0	13.1
1500-1600	Pro	4.6	29.1	31.5	3.4	7.0	16.5	1.8	3.7	0.0	2.4
	Ocp	1.1	1.4	2.2	2.6	13.4	1.5	1.5	8.8	0.0	15.7
1600-1700	Pro	3.2	26.2	27.5	5.1	9.8	16.4	1.6	7.0	0.0	3.3
	Ocp	1.1	1.7	1.9	2.6	12.6	1.5	1.4	7.4	0.0	16.0
1700-1800	Pro	2.9	30.9	24.8	2.9	9.3	21.6	1.3	3.5	0.0	2.7
	Ocp	1.2	1.4	1.9	4.2	14.9	1.5	1.5	11.9	0.0	20.8
1800-1900	Pro	4.2	33.6	30.4	1.9	11.4	13.7	0.8	1.6	0.0	2.5
	Ocp	1.4	1.5	2.0	6.1	16.0	1.6	1.0	18.5	0.0	28.5
1900-2000	Pro	4.0	36.4	35.2	1.2	12.0	7.1	0.3	0.9	0.0	2.8
	Ocp	1.2	1.5	1.9	3.0	12.6	1.8	2.0	13.0	0.0	20.8
2000-2100	Pro	3.0	36.4	40.7	0.0	8.7	6.5	1.3	0.0	0.0	3.4
	Ocp	1.0	1.5	2.1	0.0	13.2	1.8	2.0	0.0	0.0	15.9
2100-2200	Pro	4.7	27.9	40.7	0.9	14.2	4.3	1.9	1.4	0.0	3.9
	Ocp	1.1	1.6	2.1	2.5	10.2	1.8	1.8	3.3	0.0	11.8
2200-2300	Pro	2.7	35.1	36.2	0.5	14.2	4.9	0.0	1.1	0.0	5.2
	Ocp	1.0	1.7	1.8	1.0	9.5	1.6	0.0	1.0	0.0	8.4
16 hours	Pro	2.7	29.5	33.2	2.6	9.8	14.6	1.7	2.8	0.1	3.0
	Ocp	1.1	1.5	2.0	3.8	12.1	1.6	1.5	9.9	1.0	17.5

Legend

- Pro.** Proportion of vehicles in % (Sum may not add up to 100% due to figure rounding)
- Ocp.** Average occupancy of vehicles
- M&H** Medium and Heavy