

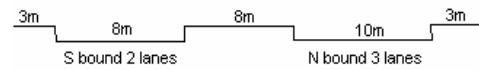
YEAR 2007

COVERAGE (B) STATION 4212

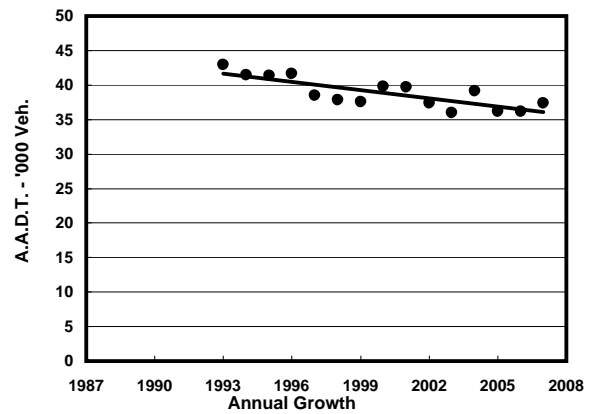
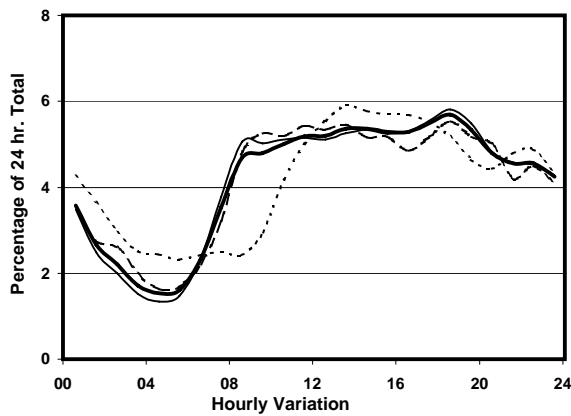
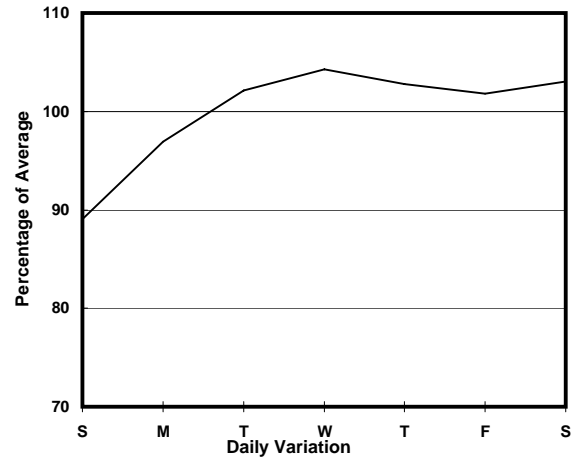
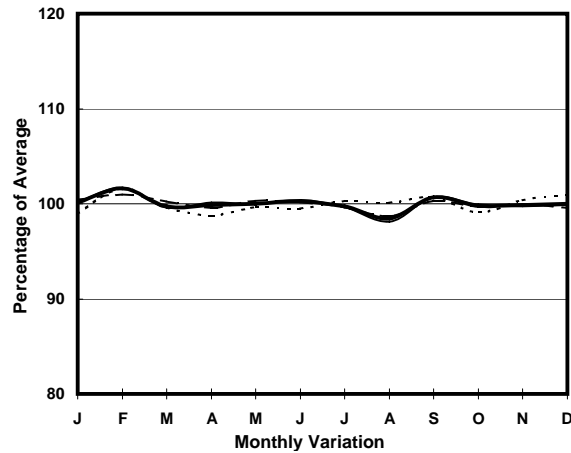
ROAD NETWORK MAJOR

ROAD TYPE PRIMARY DISTRIBUTOR

LINK CHATHAM RD N & MA TAU WAI RD (from SAN LAU ST to CHI KIANG ST)



1. TRAFFIC FLOW VARIATION AND GROWTH



— All day — Mon.- Fri. - - - - - Sat. - - - - - Sun.

2. TRAFFIC CHARACTERISTICS (BY DIRECTION)

Parameter	All - Day	Mon. - Fri.	Sat.	Sun.
SOUTH BOUND				
A.A.D.T.	16060	16020	17100	15870
R 12 / 24 - %	57.8	58.2	56.9	56.3
R 16 / 24 - %	77.4	78.1	76.8	74.6
AM Peak Hour	0800-0900	0800-0900	0900-1000	0900-1000
One-way flow at AM peak hour	780	860	860	460
T - % (AM)	-	16.5	-	-
PM Peak Hour	1800-1900	1800-1900	1800-1900	1700-1800
One-way flow at PM peak hour	850	840	940	910
T - % (PM)	-	14.6	-	-
Prop.of commercial vehicles - 16 hr.	-	16.3	-	-
NORTH BOUND				
A.A.D.T.	21330	22180	21670	17630
R 12 / 24 - %	63.2	64.2	63.7	56.4
R 16 / 24 - %	82.2	83.3	81.8	75.6
AM Peak Hour	0900-1000	0900-1000	0900-1000	0900-1000
One-way flow at AM peak hour	1100	1210	1180	530
T - % (AM)	-	20.8	-	-
PM Peak Hour	1800-1900	1800-1900	1800-1900	1600-1700
One-way flow at PM peak hour	1280	1380	1200	1010
T - % (PM)	-	17.1	-	-
Prop.of commercial vehicles - 16 hr.	-	17.3	-	-

3. OTHER INFORMATION AND COMMENT

4. Vehicle classification and occupancy - Monday to Friday

Time		Class of vehicle									
		Motor	Private	Taxi	Private	PLB	Goods veh.		Non	Fr. Bus	
		Cycle	Car		LB		Light	M & H	Fr. Bus	SD	DD
0700-0800	Pro	6.0	10.0	29.7	2.6	12.1	18.6	2.1	3.7	0.0	15.2
	Ocp	1.0	1.4	1.9	5.4	11.4	1.3	1.3	12.4	0.0	36.2
0800-0900	Pro	4.7	28.0	23.3	0.8	14.5	10.5	2.8	3.2	0.0	12.3
	Ocp	1.1	1.4	1.8	4.3	12.2	1.5	1.4	12.6	0.0	45.7
0900-1000	Pro	1.9	16.7	21.1	1.2	12.7	24.9	2.1	3.3	0.1	16.2
	Ocp	1.0	1.4	1.6	3.4	8.1	1.7	1.9	10.2	6.0	23.1
1000-1100	Pro	2.5	18.0	24.8	1.1	6.1	27.8	5.0	1.4	0.0	13.4
	Ocp	1.1	1.4	1.7	2.2	7.2	1.6	1.8	13.0	0.0	18.0
1100-1200	Pro	3.9	17.3	28.5	1.3	3.9	29.2	3.0	2.8	0.0	10.1
	Ocp	1.2	1.3	1.7	2.3	8.0	1.6	1.5	14.5	0.0	24.7
1200-1300	Pro	3.0	21.4	21.4	2.2	4.3	31.2	3.5	2.6	0.0	10.3
	Ocp	1.1	1.4	1.7	5.0	9.4	1.7	1.6	25.3	0.0	23.5
1300-1400	Pro	4.7	19.9	27.7	0.6	4.9	26.0	3.2	2.1	0.0	10.9
	Ocp	1.2	1.4	1.7	1.3	7.9	1.7	1.7	10.7	0.0	22.4
1400-1500	Pro	3.7	25.4	22.8	1.3	5.0	26.5	1.5	3.0	0.0	10.9
	Ocp	1.1	1.5	1.9	1.8	10.9	1.6	1.6	16.8	0.0	23.2
1500-1600	Pro	2.9	25.6	21.7	1.2	4.9	26.9	3.7	2.1	0.0	11.0
	Ocp	1.0	1.4	1.9	2.3	5.8	1.6	1.7	18.9	0.0	26.0
1600-1700	Pro	2.3	28.9	20.4	2.6	5.5	21.7	1.7	3.8	0.0	13.0
	Ocp	1.1	1.6	2.0	3.3	8.8	1.7	1.8	18.5	0.0	29.7
1700-1800	Pro	5.6	23.7	20.3	0.2	9.8	22.4	1.5	2.1	0.0	14.4
	Ocp	1.0	1.5	1.7	1.0	8.9	1.5	1.3	19.8	0.0	36.1
1800-1900 Peak hour	Pro	6.6	27.5	19.1	0.6	16.8	13.2	1.5	1.2	0.0	13.5
	Ocp	1.1	1.2	2.1	3.0	11.8	1.7	1.6	27.8	0.0	56.7
1900-2000	Pro	4.0	30.7	31.5	0.4	10.7	9.1	1.4	0.8	0.0	11.4
	Ocp	1.3	1.6	2.0	4.0	13.2	1.6	1.6	10.5	0.0	42.3
2000-2100	Pro	3.5	31.6	33.9	0.7	8.8	7.2	1.4	0.9	0.1	12.0
	Ocp	1.3	1.5	1.9	1.7	11.2	1.7	1.7	2.5	3.0	32.7
2100-2200	Pro	4.3	27.0	34.8	0.0	11.2	6.6	1.5	1.3	0.0	13.3
	Ocp	1.2	1.3	1.6	0.0	8.8	1.7	1.5	4.2	0.0	34.0
2200-2300	Pro	3.4	30.8	37.2	0.7	10.5	4.6	0.0	1.0	0.0	11.7
	Ocp	1.2	1.6	1.8	1.7	8.6	1.5	0.0	1.5	0.0	29.1
16 hours	Pro	4.0	24.1	25.9	1.1	8.9	19.2	2.3	2.2	0.1	12.4
	Ocp	1.1	1.4	1.8	3.3	10.1	1.6	1.6	15.0	4.5	32.1

Legend

- Pro.** Proportion of vehicles in % (Sum may not add up to 100% due to figure rounding)
- Ocp.** Average occupancy of vehicles
- M&H** Medium and Heavy