

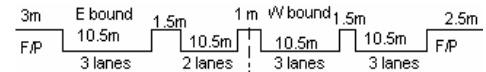
YEAR 2007

COVERAGE (B) STATION 4216

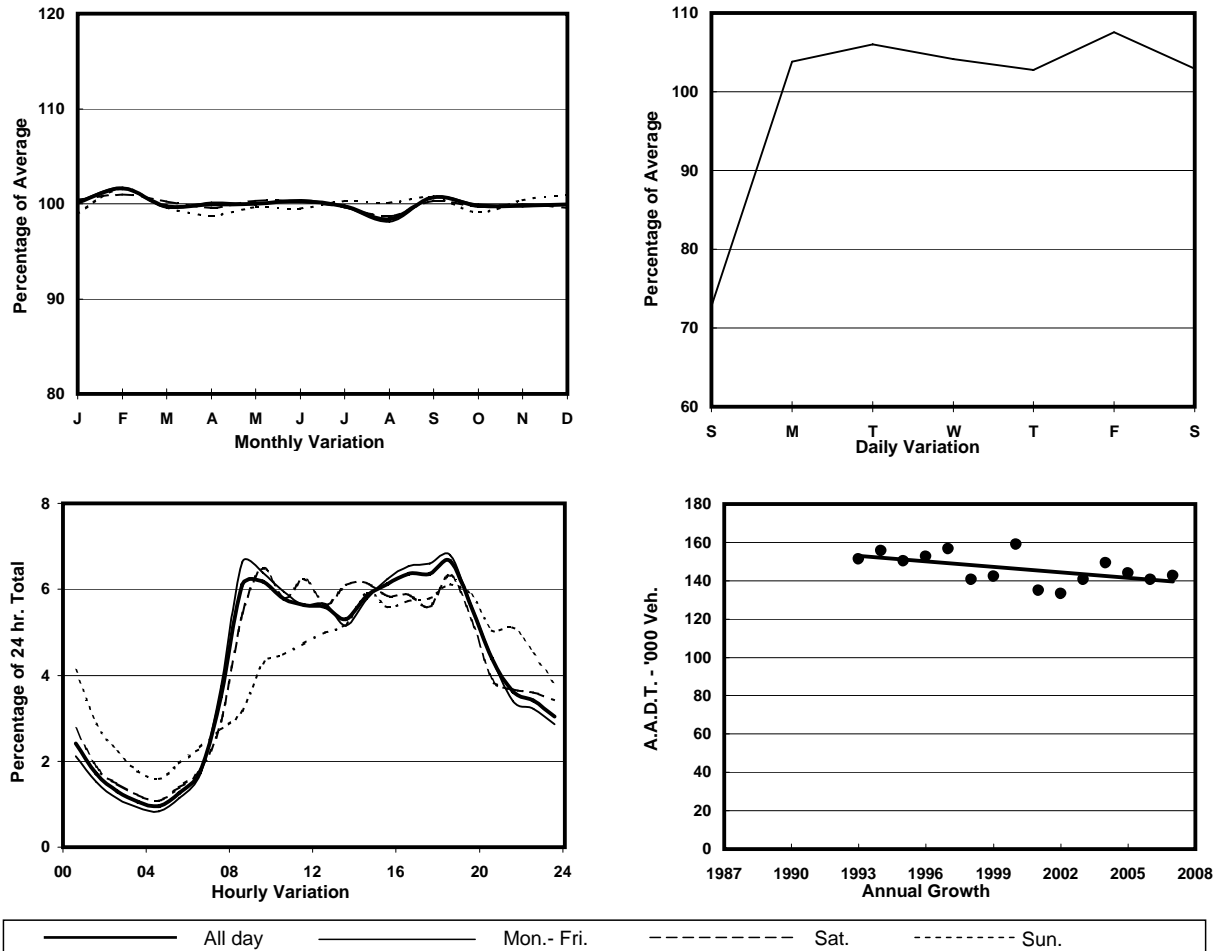
ROAD NETWORK MAJOR

ROAD TYPE URBAN TRUNK ROAD

LINK KWUN TONG RD (from PING SHEK EST EASTERN END  
to WAI YIP ST FO <K42>)



### 1. TRAFFIC FLOW VARIATION AND GROWTH



### 2. TRAFFIC CHARACTERISTICS (BY DIRECTION)

Parameter	All - Day	Mon. - Fri.	Sat.	Sun.
<b>EAST BOUND</b>				
A.A.D.T.	73540	78140	76210	55520
R 12 / 24 - %	68.3	69.8	67.5	58
R 16 / 24 - %	86	87.3	84.4	78.4
AM Peak Hour	0900-1000	0800-0900	0900-1000	0900-1000
One-way flow at AM peak hour	4560	5170	4930	2220
T - % (AM)	-	13.7	-	-
PM Peak Hour	1700-1800	1700-1800	1800-1900	1800-1900
One-way flow at PM peak hour	4620	4990	4740	3400
T - % (PM)	-	18.7	-	-
Prop.of commercial vehicles - 16 hr.	-	17	-	-
<b>WEST BOUND</b>				
A.A.D.T.	69210	73780	72910	49900
R 12 / 24 - %	70.7	72.5	69.5	59.6
R 16 / 24 - %	87	88.2	85.6	80.3
AM Peak Hour	0800-0900	0800-0900	0900-1000	0900-1000
One-way flow at AM peak hour	4300	4910	4770	2290
T - % (AM)	-	17.4	-	-
PM Peak Hour	1800-1900	1800-1900	1800-1900	1800-1900
One-way flow at PM peak hour	4890	5390	4710	3060
T - % (PM)	-	13.4	-	-
Prop.of commercial vehicles - 16 hr.	-	16.3	-	-

### 3. OTHER INFORMATION AND COMMENT

**4. Vehicle classification and occupancy - Monday to Friday**

Time		Class of vehicle									
		Motor	Private	Taxi	Private	PLB	Goods veh.		Non	Fr. Bus	
		Cycle	Car		LB		Light	M & H	Fr. Bus	SD	DD
0700-0800	Pro	4.6	18.2	22.2	2.6	9.0	19.7	8.0	7.0	0.1	8.8
	Ocp	1.1	1.6	1.9	5.7	10.6	1.5	1.2	22.4	15.0	50.4
0800-0900	Pro	4.6	36.9	17.9	1.0	6.1	18.0	6.8	2.7	0.1	5.9
	Ocp	1.0	1.3	1.9	5.0	13.5	1.6	1.4	23.8	12.8	60.3
0900-1000	Pro	3.1	27.5	19.7	1.1	5.4	29.4	5.9	1.4	0.1	6.4
	Ocp	1.1	1.3	1.7	3.2	10.8	1.5	1.4	5.1	5.7	33.6
1000-1100	Pro	3.3	21.8	15.3	0.7	5.0	33.6	14.1	0.8	0.1	5.4
	Ocp	1.0	1.4	1.8	1.8	7.3	1.5	1.4	4.7	4.0	25.0
1100-1200	Pro	2.1	23.3	12.2	1.0	5.3	36.4	14.1	0.6	0.1	5.0
	Ocp	1.1	1.5	1.9	1.9	7.2	1.5	1.4	7.4	3.3	22.5
1200-1300	Pro	2.6	26.4	13.2	1.0	5.1	36.7	8.2	1.3	0.1	5.6
	Ocp	1.1	1.5	1.9	4.3	6.7	1.6	1.6	10.0	7.3	22.6
1300-1400	Pro	2.4	23.3	14.4	1.2	4.9	34.8	11.9	1.4	0.1	5.5
	Ocp	1.0	1.5	1.8	3.5	8.0	1.6	1.4	6.3	17.0	26.7
1400-1500	Pro	2.3	24.4	13.3	0.9	4.5	34.6	13.6	1.5	0.1	4.8
	Ocp	1.1	1.6	1.8	2.1	8.0	1.5	1.4	5.4	5.7	25.3
1500-1600	Pro	2.8	24.2	14.9	2.1	4.0	33.9	11.8	1.5	0.1	4.9
	Ocp	1.1	1.5	1.8	4.1	8.8	1.6	1.4	12.8	7.0	24.0
1600-1700	Pro	2.4	25.2	15.5	1.6	3.9	33.6	10.2	2.4	0.1	5.4
	Ocp	1.1	1.5	1.6	4.2	11.3	1.5	1.4	7.6	9.3	34.3
1700-1800	Pro	5.2	28.9	14.9	1.4	5.2	27.1	8.3	2.4	0.1	6.6
	Ocp	1.1	1.4	1.7	3.5	11.7	1.6	1.5	12.5	18.7	41.2
1800-1900 Peak hour	Pro	5.9	37.0	14.7	0.6	5.7	22.4	5.9	1.5	0.1	6.3
	Ocp	1.1	1.5	2.1	3.9	15.1	1.6	1.5	22.8	21.5	59.3
1900-2000	Pro	2.8	48.7	13.9	0.5	8.1	14.0	4.1	1.6	0.1	6.2
	Ocp	1.2	1.4	1.8	2.2	13.8	1.5	1.5	18.7	14.3	45.1
2000-2100	Pro	3.6	37.6	23.2	0.1	10.2	13.1	3.0	0.8	0.1	8.3
	Ocp	1.2	1.5	2.0	1.0	12.0	1.6	1.5	13.1	4.8	30.9
2100-2200	Pro	6.3	33.1	25.0	0.5	11.2	10.3	4.4	0.8	0.1	8.4
	Ocp	1.1	1.7	1.8	3.3	10.3	1.6	1.4	13.2	10.0	31.4
2200-2300	Pro	4.7	35.8	24.6	0.1	14.0	8.0	2.5	0.6	0.1	9.5
	Ocp	1.1	1.6	1.9	1.0	9.7	1.6	1.3	4.9	9.7	28.1
16 hours	Pro	3.6	29.4	16.5	1.1	6.2	26.5	8.6	1.8	0.1	6.2
	Ocp	1.1	1.5	1.8	3.7	10.7	1.5	1.4	14.8	10.0	36.7

**Legend**

**Pro.** Proportion of vehicles in % (Sum may not add up to 100% due to figure rounding)  
**Ocp.** Average occupancy of vehicles  
**M&H** Medium and Heavy