

YEAR 2007

COVERAGE (B) STATION 4217

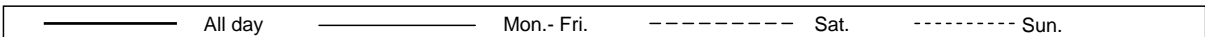
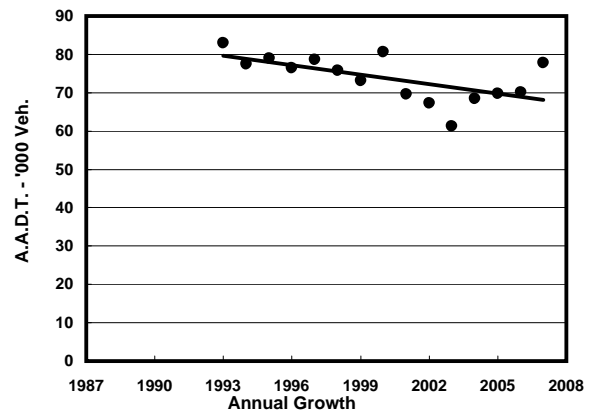
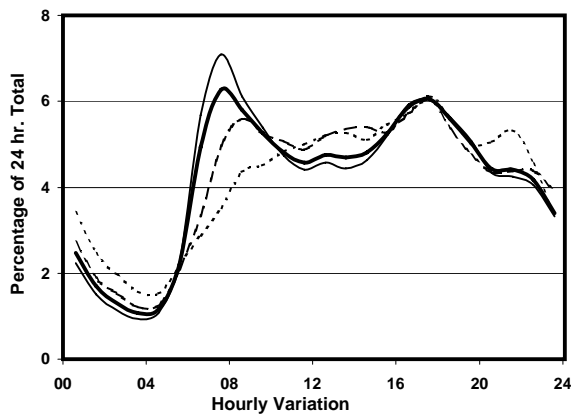
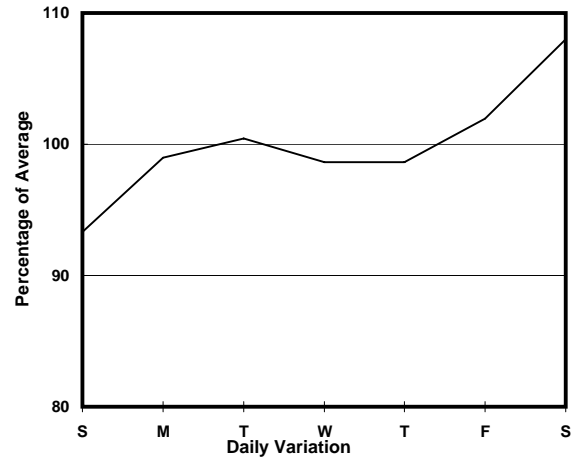
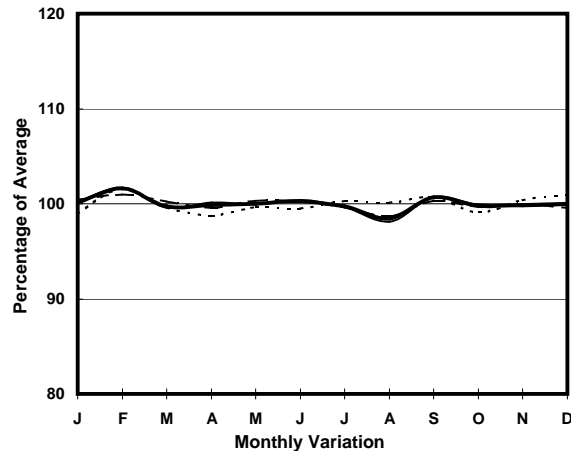
ROAD NETWORK MAJOR

ROAD TYPE PRIMARY DISTRIBUTOR

LINK CLEAR WATER BAY RD (from LUNG CHEUNG RD to
NEW CLEAR WATER BAY RD WESTERN JUNCTION)



1. TRAFFIC FLOW VARIATION AND GROWTH



2. TRAFFIC CHARACTERISTICS (BY DIRECTION)

Parameter	All - Day	Mon. - Fri.	Sat.	Sun.
EAST BOUND				
A.A.D.T.	40230	40040	43970	38420
R 12 / 24 - %	61.2	61.9	61.3	57.1
R 16 / 24 - %	82.3	83.3	81.1	78.7
AM Peak Hour	0800-0900	0800-0900	0900-1000	0900-1000
One-way flow at AM peak hour	2220	2400	2210	1540
T - % (AM)	-	11.6	-	-
PM Peak Hour	1800-1900	1800-1900	1800-1900	1800-1900
One-way flow at PM peak hour	2610	2690	2600	2300
T - % (PM)	-	6	-	-
Prop.of commercial vehicles - 16 hr.	-	10.5	-	-
WEST BOUND				
A.A.D.T.	37620	37850	40430	34520
R 12 / 24 - %	66.4	66.5	67.3	64.8
R 16 / 24 - %	81.1	80.4	83.1	82.9
AM Peak Hour	0700-0800	0700-0800	0700-0800	0900-1000
One-way flow at AM peak hour	2980	3380	2630	1750
T - % (AM)	-	15.2	-	-
PM Peak Hour	1600-1700	1600-1700	1700-1800	1700-1800
One-way flow at PM peak hour	2360	2420	2620	2290
T - % (PM)	-	14.4	-	-
Prop.of commercial vehicles - 16 hr.	-	10.3	-	-

3. OTHER INFORMATION AND COMMENT

4. Vehicle classification and occupancy - Monday to Friday

Time		Class of vehicle									
		Motor	Private	Taxi	Private	PLB	Goods veh.		Non	Fr. Bus	
		Cycle	Car		LB		Light	M & H	Fr. Bus	SD	DD
0700-0800 Peak hour	Pro	7.1	28.5	21.0	3.1	14.8	11.0	2.9	7.3	0.0	4.3
	Ocp	1.1	1.7	2.1	7.5	12.3	1.7	1.3	17.7	0.0	40.5
0800-0900	Pro	4.8	43.1	18.4	1.9	10.3	11.6	3.9	2.8	0.0	3.1
	Ocp	1.1	1.5	1.8	8.0	13.3	1.7	1.3	17.2	0.0	36.5
0900-1000	Pro	3.2	37.8	23.1	1.8	7.8	16.7	4.1	1.2	0.1	4.2
	Ocp	1.2	1.4	1.8	2.6	13.0	1.7	1.4	10.8	1.0	23.7
1000-1100	Pro	4.3	30.5	23.8	1.0	10.2	18.9	5.4	1.3	0.0	4.5
	Ocp	1.2	1.4	1.8	3.0	11.3	1.7	1.1	13.8	0.0	15.8
1100-1200	Pro	4.5	30.7	17.9	2.9	12.2	19.4	5.7	2.4	0.1	4.4
	Ocp	1.0	1.4	1.8	2.4	9.9	1.6	1.2	4.2	1.0	17.5
1200-1300	Pro	5.0	30.4	19.6	3.1	9.8	17.1	5.4	5.2	0.0	4.4
	Ocp	1.1	1.4	1.7	4.3	8.9	1.6	1.4	11.8	0.0	17.9
1300-1400	Pro	5.5	31.4	19.1	2.9	10.8	17.6	6.6	1.5	0.1	4.6
	Ocp	1.1	1.4	1.7	3.7	7.8	1.6	1.2	5.5	1.0	20.6
1400-1500	Pro	3.5	36.0	17.8	2.1	9.3	18.4	5.7	3.0	0.0	4.2
	Ocp	1.1	1.4	2.0	2.8	6.9	1.5	1.2	18.0	0.0	17.0
1500-1600	Pro	3.2	35.2	16.3	3.3	9.7	17.5	6.2	4.6	0.1	4.2
	Ocp	1.0	1.4	1.8	4.1	9.1	1.5	1.2	16.4	1.0	19.9
1600-1700	Pro	6.3	31.2	17.5	3.5	10.5	16.0	4.6	6.0	0.0	4.4
	Ocp	1.1	1.5	1.7	5.4	11.5	1.7	1.3	8.5	0.0	25.6
1700-1800	Pro	5.5	37.7	18.8	2.3	11.7	14.8	2.2	2.8	0.0	4.2
	Ocp	1.1	1.5	1.7	4.6	11.0	1.7	1.3	7.2	0.0	22.4
1800-1900	Pro	5.3	49.4	14.0	0.5	12.0	12.6	1.4	1.4	0.1	3.3
	Ocp	1.1	1.5	1.9	2.8	13.3	1.8	1.7	15.1	16.0	36.4
1900-2000	Pro	3.8	45.2	21.2	0.4	16.6	7.2	0.9	0.9	0.0	3.8
	Ocp	1.1	1.5	1.8	2.5	10.8	1.5	1.3	3.8	0.0	24.8
2000-2100	Pro	5.7	42.6	24.3	0.7	13.4	7.3	0.7	0.9	0.0	4.4
	Ocp	1.1	1.5	1.8	1.6	9.7	1.6	1.4	1.0	0.0	20.9
2100-2200	Pro	5.0	37.2	32.3	0.5	13.3	6.6	0.5	0.4	0.0	4.1
	Ocp	1.2	1.5	1.8	3.8	9.1	1.8	1.3	1.3	0.0	17.7
2200-2300	Pro	6.8	34.3	30.6	0.6	14.7	6.2	1.3	0.6	0.0	5.0
	Ocp	1.2	1.7	1.9	1.3	7.8	1.7	1.0	1.8	0.0	19.7
16 hours	Pro	5.0	36.9	20.6	1.9	11.6	13.6	3.5	2.7	0.1	4.1
	Ocp	1.1	1.5	1.8	4.6	10.7	1.6	1.3	12.6	4.0	24.1

Legend

- Pro.** Proportion of vehicles in % (Sum may not add up to 100% due to figure rounding)
- Ocp.** Average occupancy of vehicles
- M&H** Medium and Heavy