

YEAR

2007

LINK EASTERN RD & KAI SHING ST (from CONCORDE RD to
KAI CHEUNG RD)

COVERAGE (B) STATION

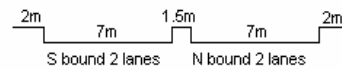
4218

ROAD NETWORK

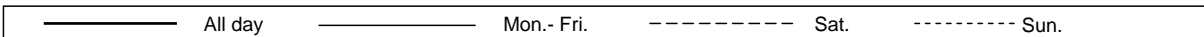
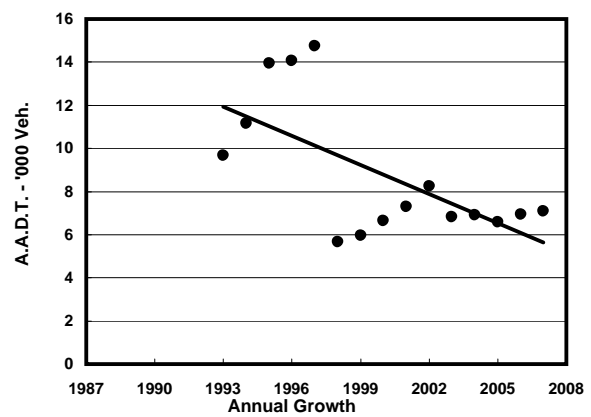
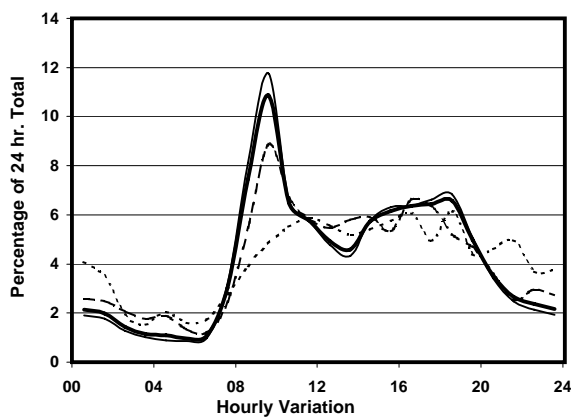
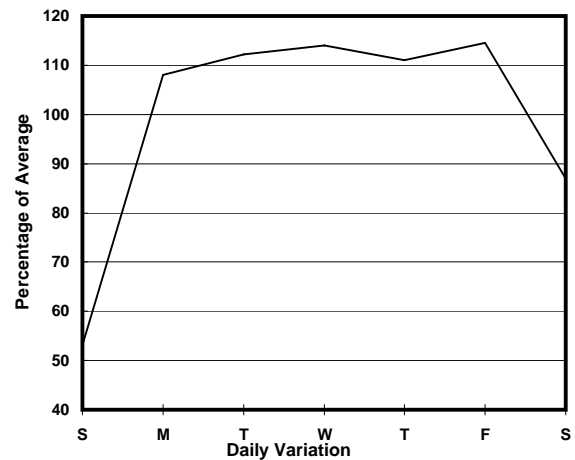
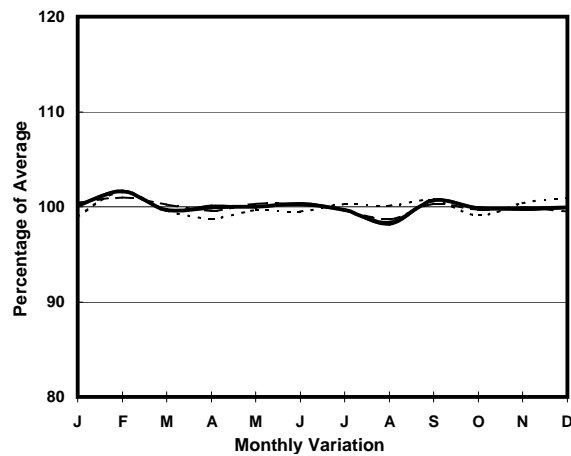
MAJOR

ROAD TYPE

DISTRICT DISTRIBUTOR



1. TRAFFIC FLOW VARIATION AND GROWTH



2. TRAFFIC CHARACTERISTICS (BY DIRECTION)

Parameter	All - Day	Mon. - Fri.	Sat.	Sun.
SOUTH BOUND				
A.A.D.T.	4440	5130	3830	2390
R 12 / 24 - %	74.8	76.7	70.3	61.5
R 16 / 24 - %	87.8	89.1	84.3	79.6
AM Peak Hour	0900-1000	0900-1000	0900-1000	0900-1000
One-way flow at AM peak hour	580	740	390	110
T - % (AM)	-	4.3	-	-
PM Peak Hour	1600-1700	1700-1800	1600-1700	1600-1700
One-way flow at PM peak hour	280	320	240	150
T - % (PM)	-	12.7	-	-
Prop.of commercial vehicles - 16 hr.	-	6.1	-	-

NORTH BOUND				
A.A.D.T.	2660	3030	2520	1490
R 12 / 24 - %	73.8	75.5	69.6	62.8
R 16 / 24 - %	88.2	89.8	83.1	80
AM Peak Hour	0900-1000	0900-1000	0900-1000	0900-1000
One-way flow at AM peak hour	190	220	180	80
T - % (AM)	-	12.5	-	-
PM Peak Hour	1800-1900	1800-1900	1700-1800	1800-1900
One-way flow at PM peak hour	250	310	190	100
T - % (PM)	-	1.1	-	-
Prop.of commercial vehicles - 16 hr.	-	8.3	-	-

3. OTHER INFORMATION AND COMMENT

4. Vehicle classification and occupancy - Monday to Friday

Time		Class of vehicle									
		Motor	Private	Taxi	Private	PLB	Goods veh.		Non	Fr. Bus	
		Cycle	Car		LB		Light	M & H	Fr. Bus	SD	DD
0700-0800	Pro	0.0	7.7	45.0	7.7	0.0	24.4	3.9	10.3	0.0	1.0
	Ocp	0.0	1.0	1.8	8.8	0.0	1.4	1.0	19.1	0.0	34.3
0800-0900	Pro	2.6	27.3	40.2	1.5	0.0	22.7	3.6	1.5	0.0	0.5
	Ocp	1.0	1.3	2.0	4.3	0.0	2.1	1.1	15.0	0.0	38.0
0900-1000 Peak hour	Pro	4.3	41.6	26.3	2.4	0.0	19.1	2.4	3.4	0.0	0.5
	Ocp	1.0	1.2	1.9	1.0	0.0	1.6	1.4	8.3	0.0	11.0
1000-1100	Pro	1.6	24.7	38.2	7.2	0.0	19.9	4.8	3.2	0.0	0.6
	Ocp	1.0	1.4	1.8	1.8	0.0	1.6	1.7	9.8	0.0	9.3
1100-1200	Pro	7.0	28.9	24.6	7.9	0.0	25.4	3.5	2.6	0.0	0.0
	Ocp	1.0	1.6	1.6	2.2	0.0	1.4	1.5	6.0	0.0	0.0
1200-1300	Pro	3.9	41.2	21.6	4.9	0.0	21.6	3.9	2.9	0.0	0.0
	Ocp	1.0	1.3	1.2	6.0	0.0	1.4	1.3	2.3	0.0	0.0
1300-1400	Pro	2.0	22.2	34.3	6.1	0.0	26.3	6.1	3.0	0.0	0.0
	Ocp	1.0	1.5	1.7	3.0	0.0	1.5	1.2	1.0	0.0	0.0
1400-1500	Pro	4.5	38.2	17.3	4.5	0.9	25.5	5.5	3.6	0.0	0.0
	Ocp	1.0	1.6	1.8	2.4	4.0	1.5	1.7	1.3	0.0	0.0
1500-1600	Pro	2.3	34.4	25.0	5.5	0.0	28.9	0.8	3.1	0.0	0.0
	Ocp	1.0	1.5	1.4	2.1	0.0	1.5	1.0	12.8	0.0	0.0
1600-1700	Pro	5.5	27.3	23.9	5.5	0.0	28.7	4.8	4.1	0.0	0.3
	Ocp	1.0	1.5	1.4	3.6	0.0	1.7	1.6	6.2	0.0	12.0
1700-1800	Pro	5.3	31.6	30.9	1.5	0.0	18.1	7.5	4.5	0.0	0.6
	Ocp	1.3	1.5	1.5	1.0	0.0	1.8	1.6	3.7	0.0	14.3
1800-1900	Pro	4.1	35.4	37.5	2.0	4.8	13.6	2.0	0.0	0.0	0.5
	Ocp	1.2	1.3	1.8	1.3	15.7	1.3	1.7	0.0	0.0	31.3
1900-2000	Pro	2.8	36.8	43.4	0.0	3.8	7.5	3.8	0.9	0.0	0.9
	Ocp	1.0	1.2	1.6	0.0	12.8	1.5	1.0	1.0	0.0	17.0
2000-2100	Pro	5.7	42.6	38.3	0.0	4.3	5.7	2.8	0.0	0.0	0.7
	Ocp	1.0	1.7	1.6	0.0	9.0	1.5	1.0	0.0	0.0	12.0
2100-2200	Pro	2.2	31.1	57.8	2.2	0.0	4.4	2.2	0.0	0.0	0.0
	Ocp	1.0	1.3	1.8	1.0	0.0	1.0	1.0	0.0	0.0	0.0
2200-2300	Pro	2.1	38.3	51.1	0.0	0.0	6.4	0.0	2.1	0.0	0.0
	Ocp	1.0	2.0	1.9	0.0	0.0	1.3	0.0	2.0	0.0	0.0
16 hours	Pro	3.7	32.1	32.6	3.7	0.8	20.1	3.7	2.9	0.0	0.4
	Ocp	1.0	1.4	1.7	3.2	12.8	1.6	1.4	8.3	0.0	20.7

Legend

Pro. Proportion of vehicles in % (Sum may not add up to 100% due to figure rounding)
Ocp. Average occupancy of vehicles
M&H Medium and Heavy