

YEAR

2007

LINK HOI WANG RD (from HOI TING RD to CHERRY ST RA)

COVERAGE (B) STATION

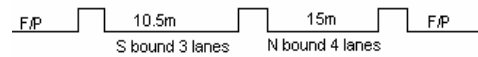
4220

ROAD NETWORK

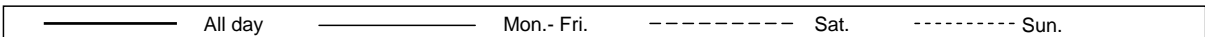
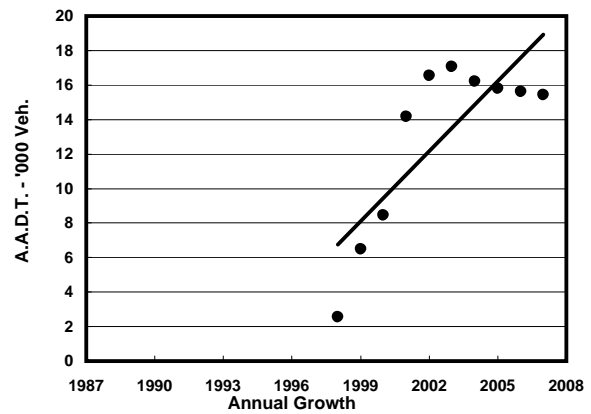
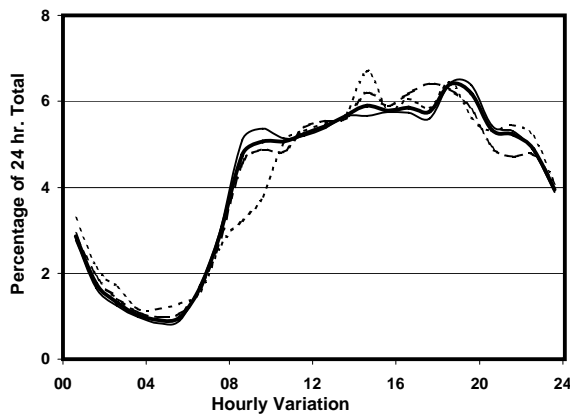
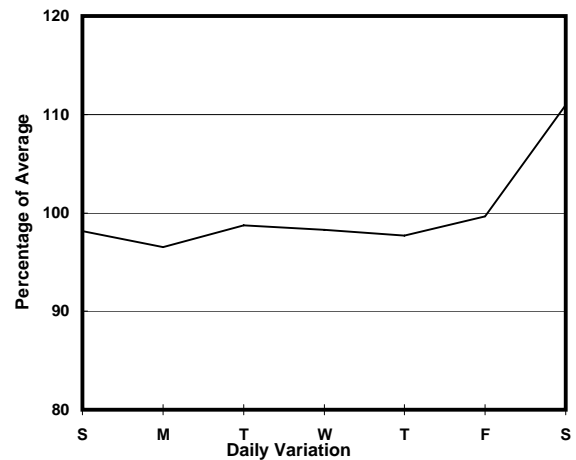
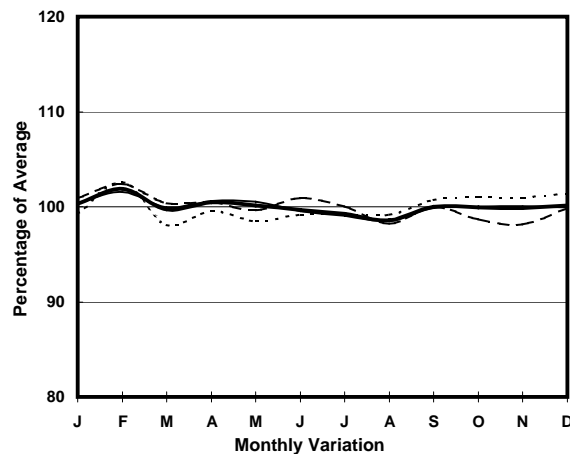
MAJOR

ROAD TYPE

PRIMARY DISTRIBUTOR



1. TRAFFIC FLOW VARIATION AND GROWTH



2. TRAFFIC CHARACTERISTICS (BY DIRECTION)

Parameter	All - Day	Mon. - Fri.	Sat.	Sun.
SOUTH BOUND				
A.A.D.T.	7700	7570	8420	7640
R 12 / 24 - %	62	62.1	62.8	60.8
R 16 / 24 - %	84.8	85.3	84	83.1
AM Peak Hour	0900-1000	0900-1000	0900-1000	0900-1000
One-way flow at AM peak hour	370	380	390	300
T - % (AM)	-	25.3	-	-
PM Peak Hour	1800-1900	1800-1900	1800-1900	1800-1900
One-way flow at PM peak hour	510	510	580	500
T - % (PM)	-	14.7	-	-
Prop.of commercial vehicles - 16 hr.	-	17.3	-	-

NORTH BOUND				
A.A.D.T.	7740	7600	8720	7550
R 12 / 24 - %	65.7	66	66.4	63.4
R 16 / 24 - %	86.2	86.8	85.7	84.2
AM Peak Hour	0800-0900	0800-0900	0800-0900	0900-1000
One-way flow at AM peak hour	420	440	470	270
T - % (AM)	-	26.3	-	-
PM Peak Hour	1600-1700	1800-1900	1600-1700	1600-1700
One-way flow at PM peak hour	490	470	580	490
T - % (PM)	-	21.1	-	-
Prop.of commercial vehicles - 16 hr.	-	23	-	-

3. OTHER INFORMATION AND COMMENT

4. Vehicle classification and occupancy - Monday to Friday

Time		Class of vehicle									
		Motor	Private	Taxi	Private	PLB	Goods veh.		Non	Fr. Bus	
		Cycle	Car		LB		Light	M & H	Fr. Bus	SD	DD
0700-0800	Pro	1.6	15.2	32.5	6.5	8.1	10.3	4.3	10.8	0.0	10.7
	Ocp	1.0	1.3	2.0	6.1	11.0	1.6	1.1	20.0	0.0	19.2
0800-0900	Pro	1.9	29.8	21.4	1.1	7.3	16.1	5.7	7.6	0.0	9.0
	Ocp	1.0	1.4	1.5	2.7	12.1	1.6	1.2	27.7	0.0	14.9
0900-1000	Pro	1.0	22.1	21.1	2.5	7.4	19.6	9.8	3.9	0.0	12.6
	Ocp	1.0	1.4	1.5	5.0	9.9	1.5	1.3	29.4	0.0	7.5
1000-1100	Pro	3.4	18.3	17.8	0.0	10.1	26.5	10.6	3.4	0.0	10.0
	Ocp	1.0	1.3	1.3	0.0	6.6	1.6	1.5	22.9	0.0	5.9
1100-1200	Pro	2.3	17.4	19.2	1.4	10.8	31.0	5.6	3.3	0.0	9.0
	Ocp	1.2	1.5	1.5	4.3	4.9	1.6	1.9	17.7	0.0	7.1
1200-1300	Pro	1.8	19.7	19.7	2.3	10.5	19.7	6.4	11.4	0.0	8.5
	Ocp	1.0	1.5	1.4	5.2	5.2	1.6	1.7	11.9	0.0	7.2
1300-1400	Pro	4.2	23.9	17.4	1.4	10.8	27.2	0.9	4.7	0.0	9.5
	Ocp	1.7	1.6	1.5	2.7	5.1	1.7	2.5	12.1	0.0	8.4
1400-1500	Pro	1.5	30.0	10.2	1.0	11.2	26.9	7.6	2.5	0.0	9.0
	Ocp	1.3	1.7	1.7	3.0	4.4	1.5	1.4	9.0	0.0	7.7
1500-1600	Pro	4.0	17.0	15.5	1.5	10.5	26.0	8.0	7.5	0.0	9.9
	Ocp	1.0	1.6	1.7	6.3	6.9	1.6	1.3	24.7	0.0	11.4
1600-1700	Pro	3.0	25.3	20.8	2.5	8.4	18.3	4.5	6.4	0.0	10.8
	Ocp	1.2	1.6	1.5	5.2	7.5	1.6	1.1	18.9	0.0	9.9
1700-1800	Pro	3.7	25.2	23.2	1.7	8.3	11.2	5.0	11.6	0.0	10.2
	Ocp	1.0	1.4	1.8	5.0	8.8	1.6	1.6	13.0	0.0	11.5
1800-1900 Peak hour	Pro	2.8	35.1	22.6	0.5	7.8	13.4	2.3	5.5	0.0	10.0
	Ocp	1.2	1.6	1.9	4.0	12.0	1.8	1.6	26.3	0.0	22.6
1900-2000	Pro	5.2	37.9	21.9	0.0	9.2	12.8	1.6	3.2	0.0	8.3
	Ocp	1.1	1.4	2.0	0.0	10.1	1.7	1.8	54.9	0.0	9.2
2000-2100	Pro	8.1	37.0	25.6	0.9	9.5	5.7	1.9	2.4	0.0	8.9
	Ocp	1.1	1.5	1.7	4.5	8.8	1.9	1.8	43.6	0.0	8.1
2100-2200	Pro	5.1	35.9	26.2	0.0	14.4	5.6	0.5	2.6	0.0	9.6
	Ocp	1.3	1.5	1.7	0.0	5.1	1.6	1.0	24.2	0.0	7.9
2200-2300	Pro	4.7	41.3	25.6	0.5	9.9	3.7	1.0	2.1	0.0	11.1
	Ocp	1.1	1.5	1.8	3.0	6.8	1.6	2.0	29.5	0.0	8.2
16 hours	Pro	3.4	27.1	21.3	1.4	9.6	17.1	4.7	5.6	0.0	9.8
	Ocp	1.1	1.5	1.7	4.9	7.5	1.6	1.5	21.5	0.0	10.5

Legend

- Pro.** Proportion of vehicles in % (Sum may not add up to 100% due to figure rounding)
- Ocp.** Average occupancy of vehicles
- M&H** Medium and Heavy