

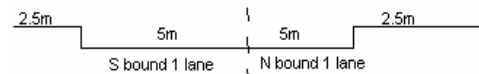
YEAR 2007

COVERAGE (B) STATION 4401

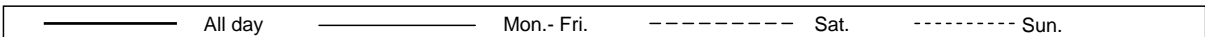
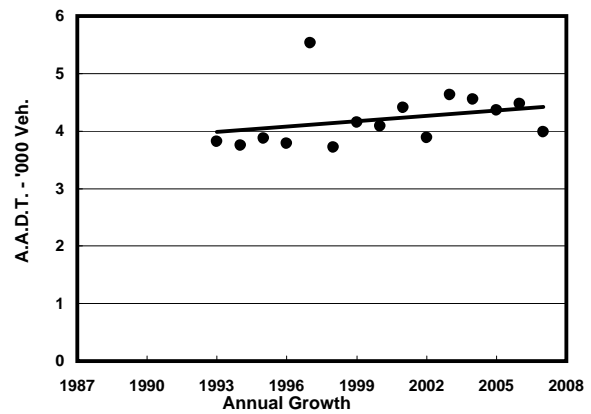
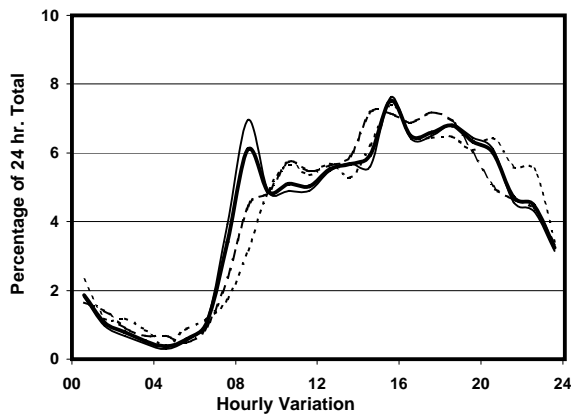
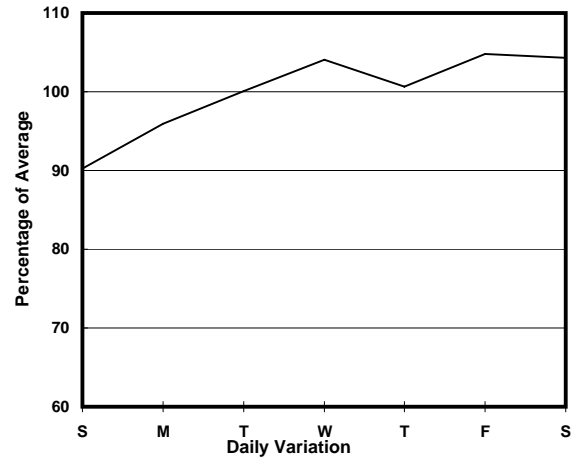
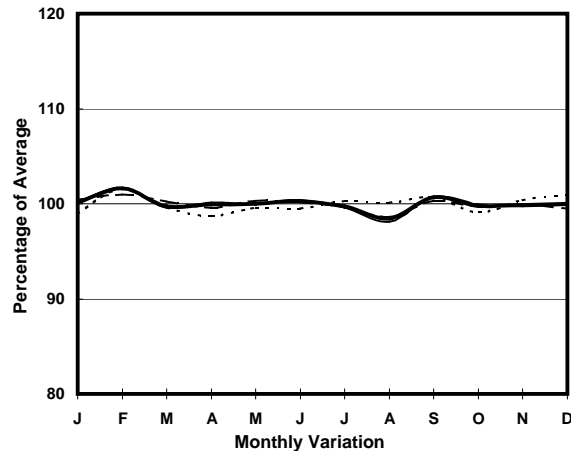
ROAD NETWORK MINOR

ROAD TYPE LOCAL DISTRIBUTOR

LINK HO MAN TIN ST (from WATERLOO RD to HO MAN TIN HILL RD)



### 1. TRAFFIC FLOW VARIATION AND GROWTH



### 2. TRAFFIC CHARACTERISTICS (BY DIRECTION)

Parameter	All - Day	Mon. - Fri.	Sat.	Sun.
<b>SOUTH BOUND</b>				
A.A.D.T.	2330	2370	2410	2130
R 12 / 24 - %	70.2	70.9	70.8	65.4
R 16 / 24 - %	90.2	90.6	90.2	88.1
AM Peak Hour	0800-0900	0800-0900	0800-0900	0900-1000
One-way flow at AM peak hour	130	150	110	70
T - % (AM)	-	2.5	-	-
PM Peak Hour	1700-1800	1800-1900	1700-1800	1700-1800
One-way flow at PM peak hour	150	170	190	140
T - % (PM)	-	-	-	-
Prop.of commercial vehicles - 16 hr.	-	3.3	-	-
<b>NORTH BOUND</b>				
A.A.D.T.	1650	1680	1760	1480
R 12 / 24 - %	67.6	68	68.4	64.2
R 16 / 24 - %	91.1	91.8	89.4	89.2
AM Peak Hour	0800-0900	0800-0900	0900-1000	0900-1000
One-way flow at AM peak hour	110	130	110	100
T - % (AM)	-	-	-	-
PM Peak Hour	1800-1900	1700-1800	1800-1900	1800-1900
One-way flow at PM peak hour	120	120	190	120
T - % (PM)	-	-	-	-
Prop.of commercial vehicles - 16 hr.	-	0.6	-	-

### 3. OTHER INFORMATION AND COMMENT

**4. Vehicle classification and occupancy - Monday to Friday**

Time		Class of vehicle									
		Motor	Private	Taxi	Private	PLB	Goods veh.		Non	Fr. Bus	
		Cycle	Car		LB		Light	M & H	Fr. Bus	SD	DD
0700-0800	Pro	0.0	21.1	44.7	15.8	2.6	5.3	0.0	10.5	0.0	0.0
	Ocp	0.0	1.3	1.2	10.8	2.0	1.0	0.0	12.5	0.0	0.0
0800-0900	Pro	0.0	76.1	6.0	3.0	1.5	11.9	0.0	1.5	0.0	0.0
	Ocp	0.0	1.4	1.8	2.0	5.0	2.8	0.0	12.0	0.0	0.0
0900-1000	Pro	2.3	65.1	14.0	0.0	4.7	11.6	0.0	2.3	0.0	0.0
	Ocp	1.0	1.3	1.5	0.0	4.5	2.0	0.0	4.0	0.0	0.0
1000-1100	Pro	0.0	31.7	52.4	3.2	1.6	9.5	1.6	0.0	0.0	0.0
	Ocp	0.0	1.6	1.4	2.0	5.0	1.2	1.0	0.0	0.0	0.0
1100-1200	Pro	0.0	39.5	39.5	2.6	0.0	15.8	0.0	2.6	0.0	0.0
	Ocp	0.0	1.7	2.1	2.0	0.0	1.0	0.0	4.0	0.0	0.0
1200-1300	Pro	0.0	38.9	37.5	8.3	1.4	6.9	0.0	6.9	0.0	0.0
	Ocp	0.0	1.7	1.5	6.0	9.0	1.8	0.0	7.8	0.0	0.0
1300-1400	Pro	4.3	34.8	45.7	2.2	2.2	10.9	0.0	0.0	0.0	0.0
	Ocp	1.0	1.6	1.3	2.0	6.0	1.6	0.0	0.0	0.0	0.0
1400-1500	Pro	1.6	41.0	45.9	0.0	1.6	9.8	0.0	0.0	0.0	0.0
	Ocp	1.0	1.4	1.5	0.0	14.0	1.2	0.0	0.0	0.0	0.0
1500-1600 Peak hour	Pro	0.0	49.1	29.1	5.5	1.8	3.6	0.0	10.9	0.0	0.0
	Ocp	0.0	1.8	1.9	9.0	8.0	1.5	0.0	13.0	0.0	0.0
1600-1700	Pro	1.7	51.7	28.3	10.0	1.7	5.0	0.0	1.7	0.0	0.0
	Ocp	1.0	1.7	1.5	6.0	7.0	2.0	0.0	12.0	0.0	0.0
1700-1800	Pro	0.0	33.9	54.8	4.8	0.0	6.5	0.0	0.0	0.0	0.0
	Ocp	0.0	1.8	1.6	3.0	0.0	1.3	0.0	0.0	0.0	0.0
1800-1900	Pro	1.1	63.8	30.9	0.0	1.1	3.2	0.0	0.0	0.0	0.0
	Ocp	1.0	1.5	1.4	0.0	9.0	1.3	0.0	0.0	0.0	0.0
1900-2000	Pro	0.0	46.0	50.8	0.0	0.0	3.2	0.0	0.0	0.0	0.0
	Ocp	0.0	1.6	1.3	0.0	0.0	1.0	0.0	0.0	0.0	0.0
2000-2100	Pro	0.0	45.8	52.1	0.0	2.1	0.0	0.0	0.0	0.0	0.0
	Ocp	0.0	1.4	1.2	0.0	4.0	0.0	0.0	0.0	0.0	0.0
2100-2200	Pro	0.0	41.7	55.6	0.0	2.8	0.0	0.0	0.0	0.0	0.0
	Ocp	0.0	1.6	1.5	0.0	3.0	0.0	0.0	0.0	0.0	0.0
2200-2300	Pro	0.0	39.4	60.6	0.0	0.0	0.0	0.0	0.0	0.0	0.0
	Ocp	0.0	1.7	1.4	0.0	0.0	0.0	0.0	0.0	0.0	0.0
16 hours	Pro	0.7	46.5	39.1	3.4	1.5	6.5	0.1	2.2	0.0	0.0
	Ocp	1.0	1.5	1.5	6.2	6.2	1.6	1.0	10.5	0.0	0.0

**Legend**

**Pro.** Proportion of vehicles in % (Sum may not add up to 100% due to figure rounding)  
**Ocp.** Average occupancy of vehicles  
**M&H** Medium and Heavy