

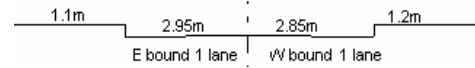
YEAR 2007

COVERAGE (B) STATION 6207

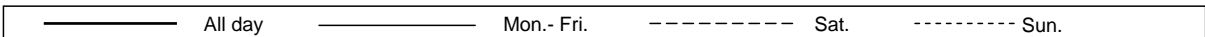
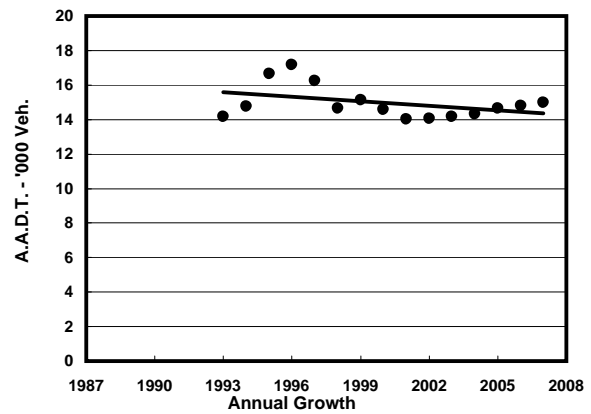
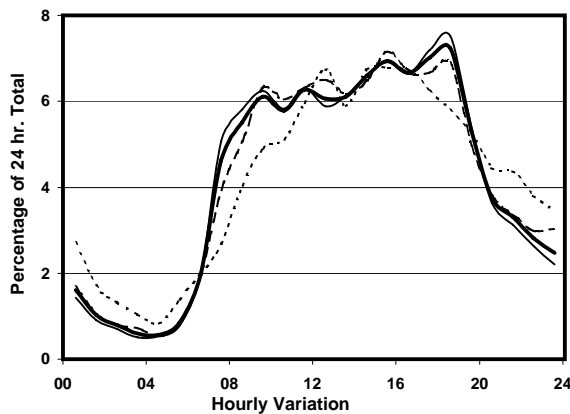
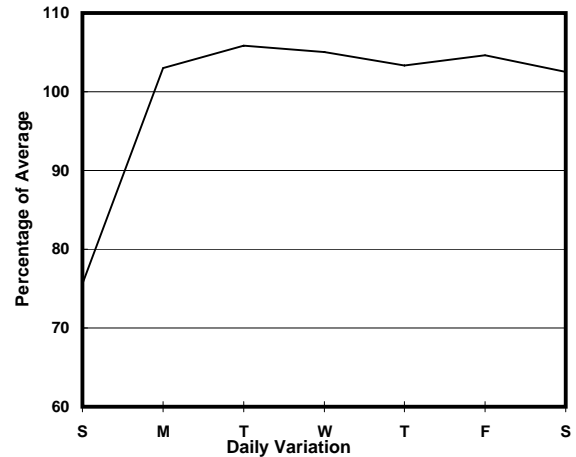
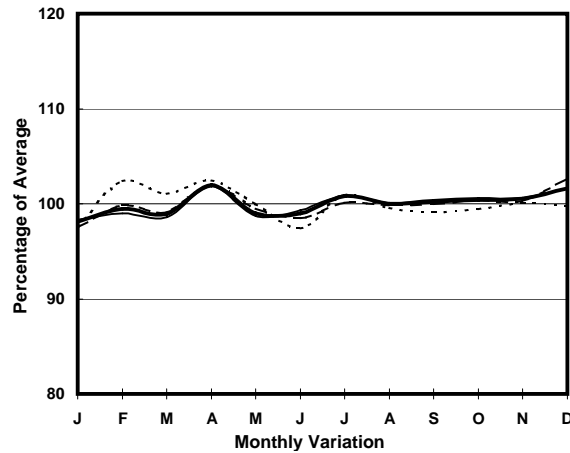
ROAD NETWORK MAJOR

ROAD TYPE RURAL ROAD

LINK KAM TIN RD (from KAM SHEUNG RD WESTERN JUNCTION to FAN KAM RD)



1. TRAFFIC FLOW VARIATION AND GROWTH



2. TRAFFIC CHARACTERISTICS (BY DIRECTION)

Parameter	All - Day	Mon. - Fri.	Sat.	Sun.
EAST BOUND				
A.A.D.T.	7340	7740	7680	5660
R 12 / 24 - %	75.6	76.8	74.6	67.8
R 16 / 24 - %	90	90.7	89.2	85.7
AM Peak Hour	0900-1000	0900-1000	0900-1000	0900-1000
One-way flow at AM peak hour	480	510	550	260
T - % (AM)	-	5.9	-	-
PM Peak Hour	1700-1800	1700-1800	1600-1700	1600-1700
One-way flow at PM peak hour	520	570	540	370
T - % (PM)	-	9.3	-	-
Prop.of commercial vehicles - 16 hr.	-	11.3	-	-
WEST BOUND				
A.A.D.T.	7650	8120	7890	5850
R 12 / 24 - %	74.3	75.5	73.9	67.5
R 16 / 24 - %	90.3	91.2	89.5	85.4
AM Peak Hour	0900-1000	0900-1000	0900-1000	0900-1000
One-way flow at AM peak hour	440	480	430	300
T - % (AM)	-	16.5	-	-
PM Peak Hour	1800-1900	1800-1900	1800-1900	1600-1700
One-way flow at PM peak hour	630	700	650	410
T - % (PM)	-	8.2	-	-
Prop.of commercial vehicles - 16 hr.	-	11.1	-	-

3. OTHER INFORMATION AND COMMENT

4. Vehicle classification and occupancy - Monday to Friday

Time		Class of vehicle									
		Motor	Private	Taxi	Private	PLB	Goods veh.		Non	Fr. Bus	
		Cycle	Car		LB		Light	M & H	Fr. Bus	SD	DD
0700-0800	Pro	3.1	28.1	9.2	3.7	12.2	25.1	12.2	1.8	2.1	2.4
	Ocp	1.2	1.5	2.1	3.5	11.1	1.6	1.4	24.0	21.6	30.0
0800-0900	Pro	0.8	47.1	10.9	2.9	8.0	21.8	5.5	0.4	1.4	1.2
	Ocp	1.0	1.3	1.8	7.6	13.9	1.5	1.2	1.0	20.3	37.2
0900-1000	Pro	0.9	46.7	8.6	2.3	4.5	26.3	7.3	0.9	1.2	1.2
	Ocp	1.0	1.3	1.5	4.2	12.3	1.4	1.1	1.0	10.2	18.2
1000-1100	Pro	0.0	38.8	7.0	1.1	7.0	36.1	7.0	0.5	1.5	1.1
	Ocp	0.0	1.3	1.4	2.0	8.9	1.5	1.2	2.0	9.1	11.3
1100-1200	Pro	2.1	39.9	2.7	1.6	5.9	34.0	11.7	0.0	1.3	0.8
	Ocp	1.0	1.3	1.2	2.0	8.9	1.4	1.1	0.0	7.3	11.7
1200-1300	Pro	0.5	42.4	4.6	4.6	6.5	27.7	10.1	1.4	1.2	1.2
	Ocp	1.0	1.5	1.4	8.1	8.6	1.7	1.1	1.0	8.2	7.2
1300-1400	Pro	1.4	45.3	5.1	0.9	6.5	26.2	12.2	0.0	1.5	0.8
	Ocp	1.3	1.5	1.4	9.0	9.9	1.7	1.2	0.0	8.5	14.7
1400-1500	Pro	0.8	45.4	8.7	1.2	2.1	28.5	11.1	0.0	1.1	1.0
	Ocp	1.5	1.7	1.5	4.0	10.6	1.5	1.4	0.0	8.5	12.2
1500-1600	Pro	3.9	43.1	4.7	1.9	3.5	31.9	8.2	0.8	1.2	0.9
	Ocp	1.0	1.4	1.8	3.6	10.6	1.4	1.3	12.5	9.0	12.9
1600-1700	Pro	0.4	46.4	4.7	0.4	3.4	30.2	10.2	1.7	1.3	1.2
	Ocp	1.0	1.5	2.9	11.0	11.0	1.5	1.3	2.3	10.3	8.8
1700-1800	Pro	1.1	50.1	7.1	1.5	4.5	24.9	7.1	1.5	1.3	1.1
	Ocp	1.0	1.6	1.4	1.0	11.4	1.6	1.1	2.3	12.3	13.7
1800-1900 Peak hour	Pro	1.8	59.8	5.5	2.6	5.2	16.6	5.5	0.7	1.3	0.9
	Ocp	1.0	1.5	1.7	1.6	13.1	1.3	1.1	5.5	16.9	26.0
1900-2000	Pro	1.5	63.6	6.5	1.5	6.5	14.5	3.5	0.0	1.1	1.3
	Ocp	1.0	1.5	1.5	2.3	12.8	1.7	1.1	0.0	11.7	20.0
2000-2100	Pro	0.0	64.5	9.6	0.6	7.0	14.1	1.3	0.0	1.8	1.1
	Ocp	0.0	1.2	1.4	1.0	8.5	1.3	1.0	0.0	4.9	11.0
2100-2200	Pro	0.0	53.0	13.3	0.8	9.4	12.5	7.0	0.0	2.3	1.8
	Ocp	0.0	1.4	1.4	2.0	7.6	1.6	1.4	0.0	2.8	13.6
2200-2300	Pro	2.0	59.7	8.1	1.0	6.1	14.2	4.1	0.0	2.5	2.3
	Ocp	1.0	1.4	1.4	3.0	8.2	1.4	1.5	0.0	4.6	9.7
16 hours	Pro	1.3	48.1	7.0	1.9	5.8	24.8	7.9	0.7	1.4	1.2
	Ocp	1.1	1.4	1.6	4.5	10.7	1.5	1.2	6.1	10.8	17.1

Legend

Pro. Proportion of vehicles in % (Sum may not add up to 100% due to figure rounding)
Ocp. Average occupancy of vehicles
M&H Medium and Heavy