

YEAR

2007

LINK KAM SHEUNG RD (from KAM TIN RD to KAM TIN RD)

COVERAGE (B) STATION

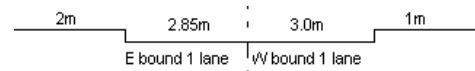
6208

ROAD NETWORK

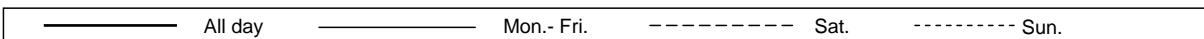
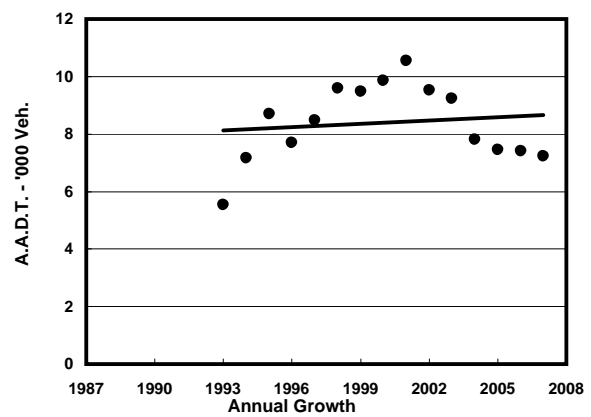
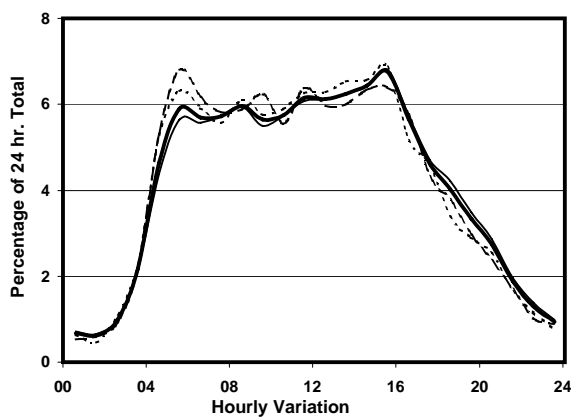
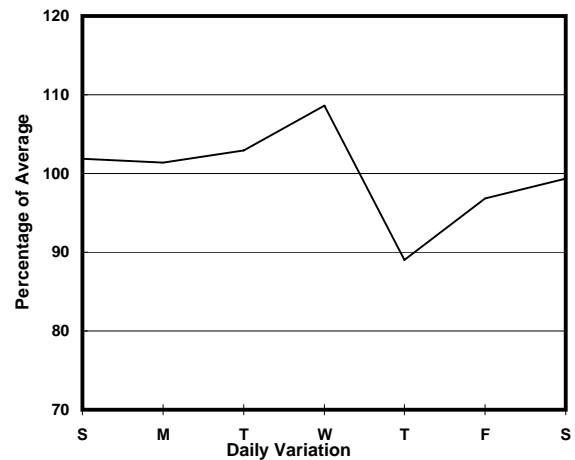
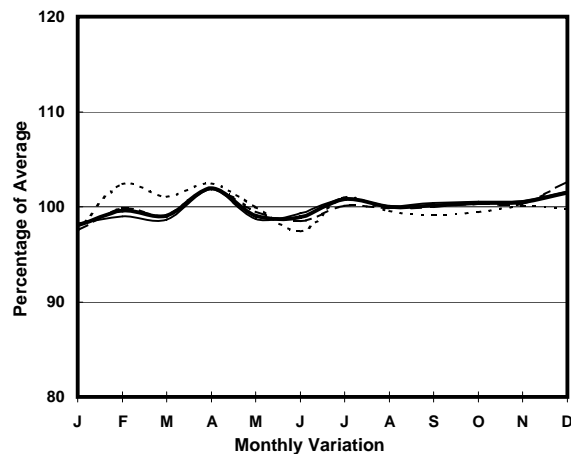
MAJOR

ROAD TYPE

RURAL ROAD



1. TRAFFIC FLOW VARIATION AND GROWTH



2. TRAFFIC CHARACTERISTICS (BY DIRECTION)

Parameter	All - Day	Mon. - Fri.	Sat.	Sun.
EAST BOUND				
A.A.D.T.	3820	3800	3790	3930
R 12 / 24 - %	68.9	69.1	68.4	68.7
R 16 / 24 - %	79.6	80.2	77.5	78.3
AM Peak Hour	0800-0900	0800-0900	0700-0800	0700-0800
One-way flow at AM peak hour	210	210	230	220
T - % (AM)	-	8.5	-	-
PM Peak Hour	1600-1700	1600-1700	1600-1700	1600-1700
One-way flow at PM peak hour	210	210	210	200
T - % (PM)	-	9.3	-	-
Prop.of commercial vehicles - 16 hr.	-	9.9	-	-

WEST BOUND				
A.A.D.T.	3420	3420	3400	3460
R 12 / 24 - %	69.3	69.5	68.7	69.3
R 16 / 24 - %	77	77.6	75.5	75.9
AM Peak Hour	0800-0900	0800-0900	0900-1000	0800-0900
One-way flow at AM peak hour	220	220	250	240
T - % (AM)	-	14.9	-	-
PM Peak Hour	1600-1700	1600-1700	1600-1700	1600-1700
One-way flow at PM peak hour	200	210	200	180
T - % (PM)	-	12.3	-	-
Prop.of commercial vehicles - 16 hr.	-	12.7	-	-

3. OTHER INFORMATION AND COMMENT

4. Vehicle classification and occupancy - Monday to Friday

Time		Class of vehicle									
		Motor	Private	Taxi	Private	PLB	Goods veh.		Non	Fr. Bus	
		Cycle	Car		LB		Light	M & H	Fr. Bus	SD	DD
0700-0800	Pro	0.0	29.4	13.1	3.3	18.5	17.4	6.5	7.6	1.1	3.0
	Ocp	0.0	1.4	2.4	17.0	7.2	1.8	1.3	12.7	7.5	33.5
0800-0900	Pro	1.0	46.6	4.9	2.9	15.5	17.5	6.8	1.0	0.7	3.2
	Ocp	1.0	1.7	1.2	5.0	8.6	1.4	1.3	42.0	1.7	29.5
0900-1000	Pro	0.0	36.7	8.9	1.8	10.7	24.2	10.7	1.8	0.9	4.3
	Ocp	0.0	1.4	1.8	2.5	8.3	1.6	1.3	1.0	5.5	13.0
1000-1100	Pro	1.3	36.5	13.0	0.0	11.7	24.8	6.5	0.0	1.3	4.9
	Ocp	1.0	1.5	1.7	0.0	9.3	1.6	1.2	0.0	4.8	12.9
1100-1200	Pro	0.0	40.7	9.0	1.1	11.3	26.0	7.9	0.0	0.8	3.1
	Ocp	0.0	1.5	1.6	5.0	8.7	1.8	1.4	0.0	4.0	15.9
1200-1300	Pro	0.0	40.3	6.9	1.4	15.3	25.0	5.6	0.0	0.7	4.9
	Ocp	0.0	1.4	2.0	6.0	8.4	1.6	1.0	0.0	3.0	14.7
1300-1400	Pro	1.3	41.3	7.5	1.3	11.3	23.8	5.0	3.8	0.6	4.4
	Ocp	1.0	1.5	1.8	3.0	10.2	1.6	1.5	8.3	1.0	16.3
1400-1500	Pro	1.0	43.8	10.7	1.0	6.8	25.3	7.8	0.0	0.2	3.4
	Ocp	1.0	1.7	1.5	1.0	8.1	1.3	1.3	0.0	1.0	14.6
1500-1600 Peak hour	Pro	0.0	39.0	7.6	1.1	11.9	30.4	4.3	1.1	0.8	3.8
	Ocp	0.0	1.3	1.6	2.0	9.3	1.4	1.0	18.0	5.3	17.6
1600-1700	Pro	0.0	57.4	4.1	2.1	11.3	14.4	3.1	3.1	0.5	4.1
	Ocp	0.0	1.8	1.8	3.5	12.5	1.3	1.3	4.7	1.5	21.1
1700-1800	Pro	1.2	54.3	3.5	1.2	10.6	16.5	4.7	1.2	1.5	5.3
	Ocp	1.0	1.6	2.0	1.0	9.1	1.1	1.0	13.0	11.4	24.3
1800-1900	Pro	4.2	49.9	10.6	1.1	10.6	14.9	1.1	3.2	0.8	3.7
	Ocp	1.0	1.5	1.6	13.0	11.5	1.6	1.0	10.3	1.7	35.8
1900-2000	Pro	1.8	65.6	4.6	2.7	8.2	10.9	0.0	1.8	0.9	3.4
	Ocp	1.0	1.6	1.0	2.7	9.6	1.7	0.0	15.5	2.3	22.1
2000-2100	Pro	2.5	60.8	10.1	1.3	8.9	11.4	0.0	0.0	0.6	4.4
	Ocp	1.0	1.6	1.5	1.0	7.1	1.4	0.0	0.0	1.0	14.2
2100-2200	Pro	4.6	63.3	7.7	0.0	10.8	7.7	0.0	0.0	0.8	5.0
	Ocp	1.0	1.5	1.6	0.0	4.7	1.6	0.0	0.0	1.0	15.1
2200-2300	Pro	0.0	59.7	16.3	1.8	5.4	7.2	1.8	0.0	1.4	6.3
	Ocp	0.0	1.6	1.7	3.0	8.3	1.8	1.0	0.0	1.0	16.6
16 hours	Pro	1.1	47.4	8.4	1.6	11.3	18.9	4.7	1.6	0.8	4.1
	Ocp	1.0	1.6	1.7	5.5	8.9	1.5	1.2	11.5	4.1	19.6

Legend

- Pro.** Proportion of vehicles in % (Sum may not add up to 100% due to figure rounding)
- Ocp.** Average occupancy of vehicles
- M&H** Medium and Heavy